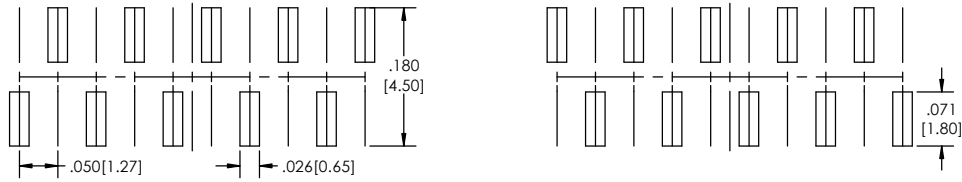


Recommended P.C. Board Layout

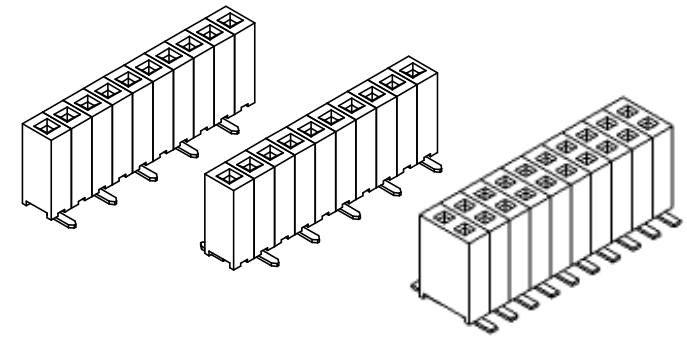
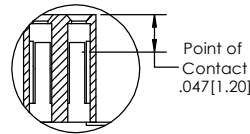
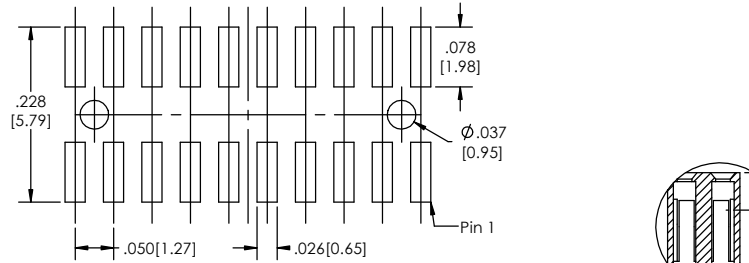
SCALE 8:1



SINGLE (S)

DOUBLE

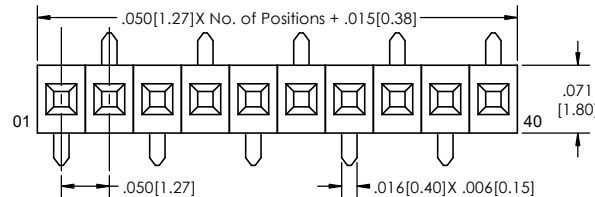
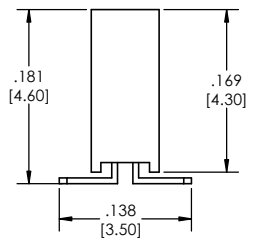
SINGLE (M)



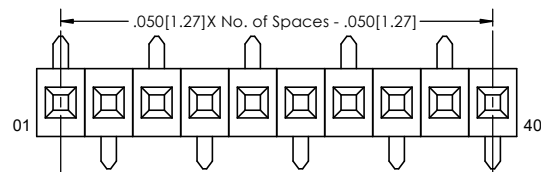
SMSS-5 **XX** - **X** - **06** - **XX** - **X** - **XXX** - **XX** - **X** - **XX** - **LF**
(A) **(B)** **(C)** **(D)** **(E)** **(F)** **(G)** **(H)** **(I)** **(J)**

- A. Pins Per Row
 - 1 through 40
- B. Row Specification
 - S= Single Row
 - D= Double Row
- C. Surface Mount
- D. Plating Options
 - See Plating Options below
- E. Foot print Orientation
 - S= 1 pin right
 - M= 1 pin left
- F. Polarized Position
 - Leave blank if not needed
 - If required, specify empty pin position
 - e.g. .012 for Pin 12
- G. Packing Information
 - TR= Tape and Reel
 - TB= Tube
 - If left blank, packaging at MLE's discretion
 - Pad may be metal, mylar or plastic
- H. Pad
 - P= Plastic
 - K=Kapton
 - O= No Pad
- I. Alignment Pin
 - Leave blank if not needed
 - AP= With
- J. Lead Free

Mates with:
 BSTC
 BSTCM
 BSTS
 TBSTC
 TBSTCM
 TBSTS
 TSHC
 TSHS
 TSHSCM
 TTSHC
 TTSHR
 TTSHS
 TTSHSM

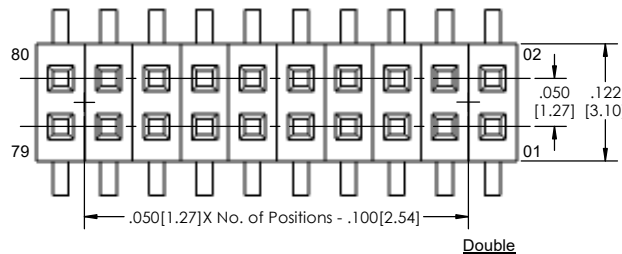
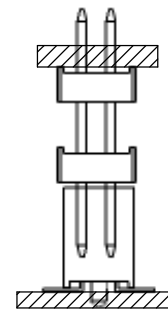


Single (S)

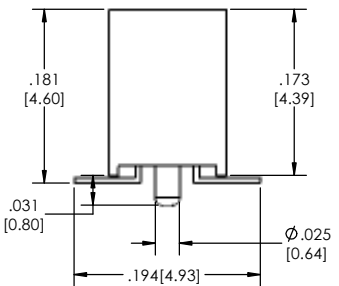


Single (M)

APPLICATION



Double



Plating options	
G	-10µ Gold on Contact Area/ Flash on Tail
T	-Matte Tin all Over
GT	-10µ Gold on Contact Area/ Matte Tin on Tail
H	-30µ Gold on Contact Area/ Matte Tin on Tail
F	-Gold Flash over Entire Pin
FT	-Gold Flash on Contact Area/ Matte Tin on Tail

Specifications:
 Current Rating: 1.0 Ampere
 Insulation Resistance: 1000M Ohms Min.
 Dielectric Withstanding: 300V AC
 Contact Resistance: 20M Ohms Max.
 Operation Temperature: -40°C to +105°C
 Max. Process Temperature
 Peak: 260°C up to 10 secs.
 Process: 230°C up to 60 secs.
 Wave: 260°C up to 6 secs.
 Reflow: 260°C up to 10 secs.
 Manual Solder: 350°C up to 5 secs.

Materials:
 Contact Material: Phosphor Bronze
 Insulator Material: Nylon 6T
 Plating: Au or Sn over 50µ" (1.27) Ni

Tails may be clipped to achieve specific dimensions.
 Products cut to specific sizes are uncancellable/ nonreturnable.
 Parts are subject to change without notice.



PROPRIETARY AND CONFIDENTIAL
 THE INFORMATION CONTAINED IN THIS DRAWING IS THE SOLE PROPERTY OF Major League Electronics. ANY REPRODUCTION IN PART OR AS A WHOLE WITHOUT THE WRITTEN PERMISSION OF Major League Electronics IS PROHIBITED.

UNLESS OTHERWISE SPECIFIED:		NAME		DATE	
DIMENSIONS ARE IN INCHES		DRAWN	EOW	08/18/16	
TOLERANCES:		CHECKED	GWE	08/18/16	
ONE DECIMALS ±.100		ENG APPR.			
TWO DECIMALS ±.010		MFG APPR.			ADDRESS:
THREE DECIMAL ±.005		INTERPRET GEOMETRIC TOLERANCING PER:			2533 Centennial Blvd.
FOUR DECIMAL ±.002		MATERIAL:			Jeffersonville, IN 47130
NEXT ASSY	USED ON	FINISH			Phone: 812-670-4174
APPLICATION	DO NOT SCALE DRAWING				Fax: 812-670-4175
					E-Mail: mle@mlelectronics.com
					TITLE: SMSS-5 SERIES
					SIZE DWG. NO.
					REV G
					SCALE 10:1
					SHEET 1 OF 1