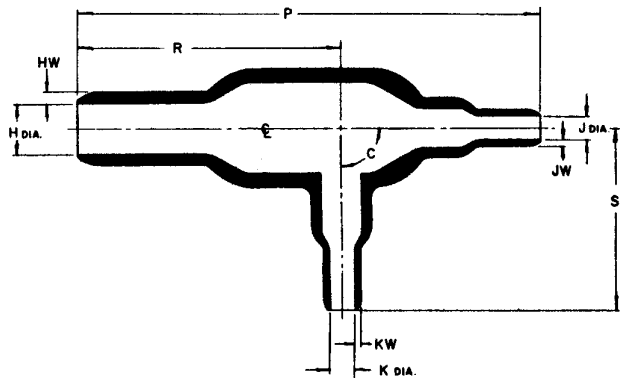


REVISIONS		
LTR	DESCRIPTION	DATE

PART AFTER
UNRESTRICTED RECOVERY



NOTES:

- All dimensions are in inches.
- Dimensions appearing in table are as follows:
a - As supplied
b - After unrestricted recovery

TABLE OF DIMENSIONS:

PART NUMBER	H		J & K		P	R	S	HW	JW & KW	C	
	Min a	Max b	Min a	Max b	±10% b	±10% b	±10% b	±20% b	±20% b	±10° a	±5° b
322A012	.52	.29	.26	.15	2.20	1.30	.76	.06	.04	10	90
322A024	1.06	.52	.52	.26	3.82	2.12	1.52	.10	.06	10	90

**If this document is printed it becomes uncontrolled.
Check for the latest revision.**

ORDERING INFORMATION:

Base part number 322A012 -12

Material dash number -12 Viton, flexible (RT-1312)

SPECIFICATION CONTROL DRAWING (LIMITED DISTRIBUTION)

DRAWN	REN 1-25-82	Raychem		RAYCHEM CORPORATION 300 CONSTITUTION DRIVE MENLO PARK, CALIFORNIA 94025
CHECKED				
DSGN APPD	1/25/82	TITLE TRANSITION, 90° SIDE BREAKOUT		
MFG APPD	1/25/82			
QC APPD	J. SHUGART 1/25/82			
MKTG APPD	1/25/82	CODE IDENT.	DWG. NO.	322A012-12 and 322A024-12
TSL APPD	1/25-82	NO. 06000		
				SHEET 1 OF 1