

1

2

3

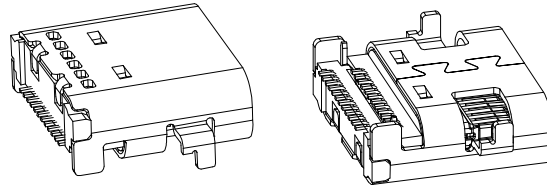
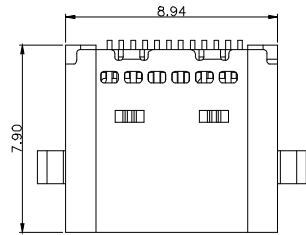
4

5

6

7

A



NOTES:

1.MECHANICAL:

INSERTION: 5~20N.
EXTRACTION: 8~20N.
DURABILITY: 10000 CYCLES

2.ELECTRICAL:

CURRENT RATING: 3A MAX
VOLTAGE: 100V AC.
CONTACT RESISTANCE: 40 mΩ MAX.
INSULATION RESISTANCE: 100MΩ MIN.

3.ENVIRONMENTAL

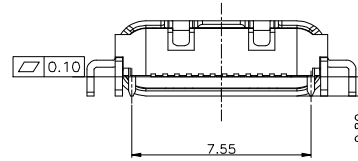
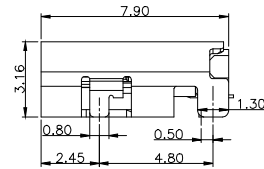
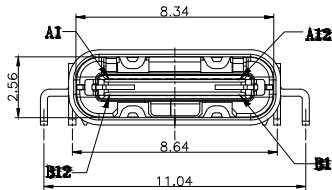
TEMPERATURE RANGE: -30 °C ~ 85 °C

② Max Processing Temp: 260° 5s Max

Packing: Tape&Reel

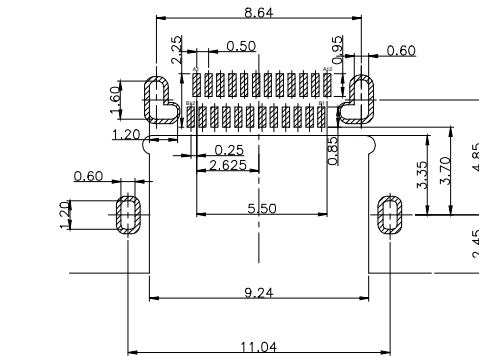
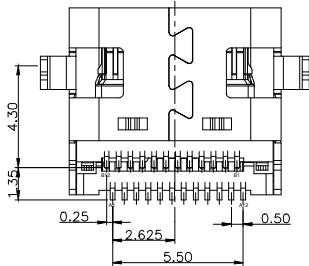
B

C



D

E



CONNECTOR FRONT EDGE
RECOMMENDED P.C.B. LAYOUT
TOLERANCE UNSPECIFIED ±0.05mm

A1	GND	B12	GND
A2	SSTXP1	B11	SSRXP1
A3	SSTXN1	B10	SSRXN1
A4	VBUS	B9	VBUS
A5	CC1	B8	SBU2
A6	DP1	B7	DN2
A7	DN1	B6	DP2
A8	SBU1	B5	CC2
A9	VBUS	B4	VBUS
A10	SSRXN2	B3	SSTXN2
A11	SSRXP2	B2	SSTXP2
A12	GND	B1	GND
PIN	SIGNAL NAME	PIN	SIGNAL NAME

F

G

H

RoHS compliant
Unit: mm

Scale	Free						Date	Name	Customer-No.		
① TOLERANCE							Drawn	15.12.2015	Winnie	ASSMANN WSW-No. AUSB1-DFN-HSR1	
X.	±0.38						Approved	25.10.2019	Carson		
X.X	±0.30										
X.XX	±0.20	②	Update		25.10.2019	Carson					
DIM	TOL	①	Change of production plant		04.01.2019	Xavier				Drawing-No.	
X.°	±3°									ASS 7101 CO rev02	
.X°	±1°	①	Drawn		15.12.2015	Winnie					
① Angle	TOL	Id.	Modification		Date	Name				Replace	Sheet 1/1

5	SHELL	STAINLESS STEEL	NI/SN Plated	1PCS
4	SPRING	STAINLESS STEEL		1PCS
3	SHIELDING PLATE	STAINLESS STEEL	NI Plated	1PCS
2	CONTACT	COPPER ALLOY	30u" selective gold/NI Plated Tin plating on solder area	1SET
1	HOUSING	HIGH TEMPERATURE PLASTIC (LCP UL 94V-0)	BLACK	1PCS
NO.	DESCRIPTION	MATERIAL	REMARKS	QTY

②

ASSMANN
WSW components

1

2

3

4

5

6

7

SV 4022