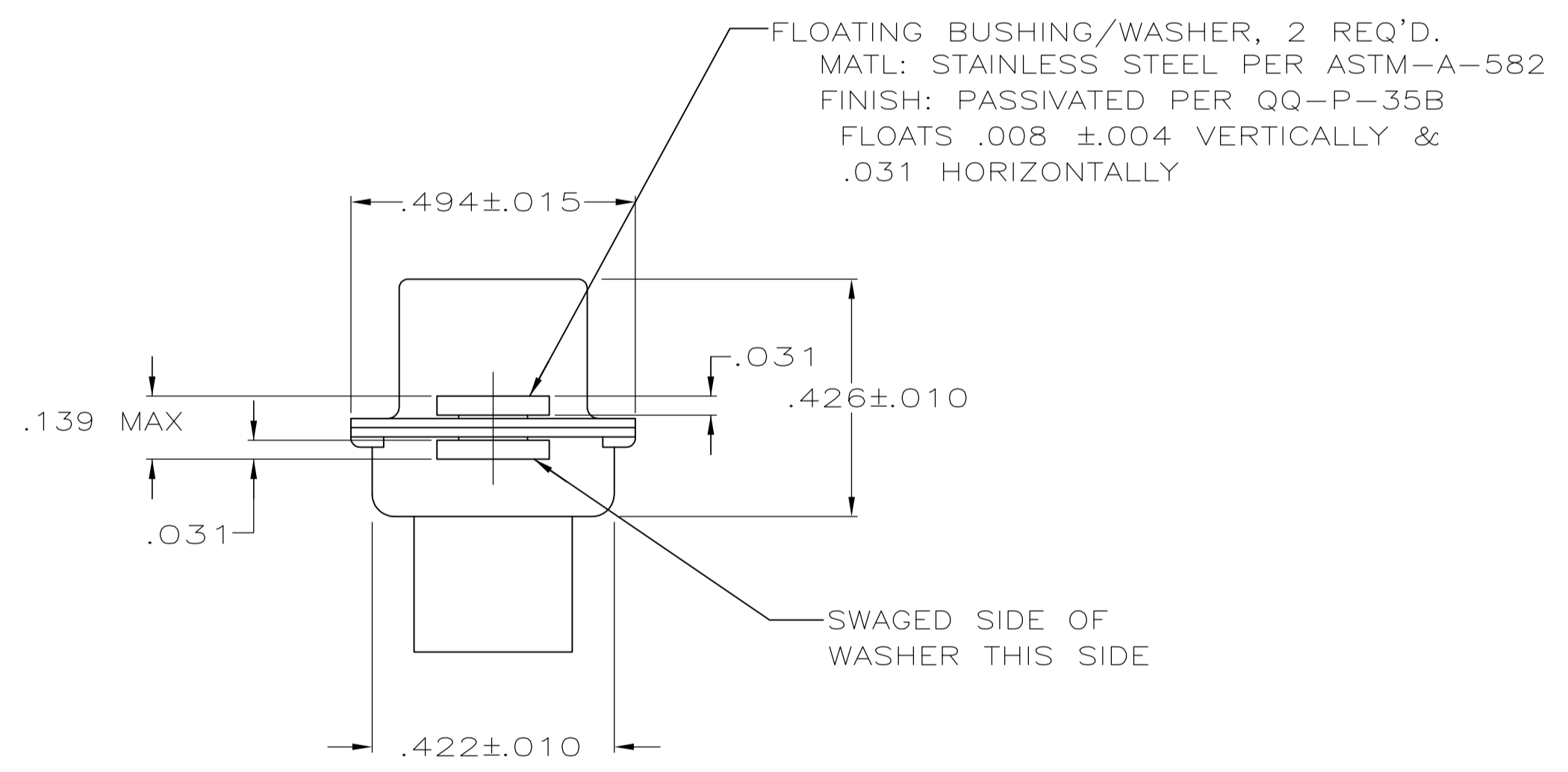
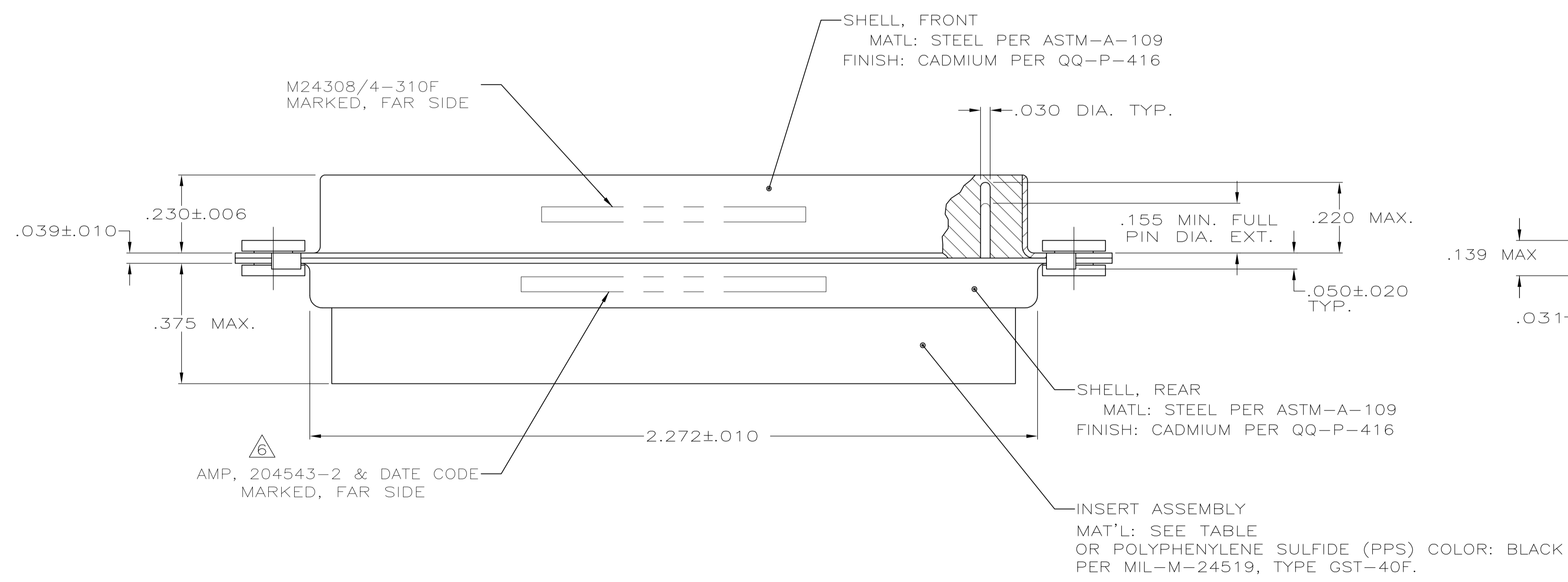
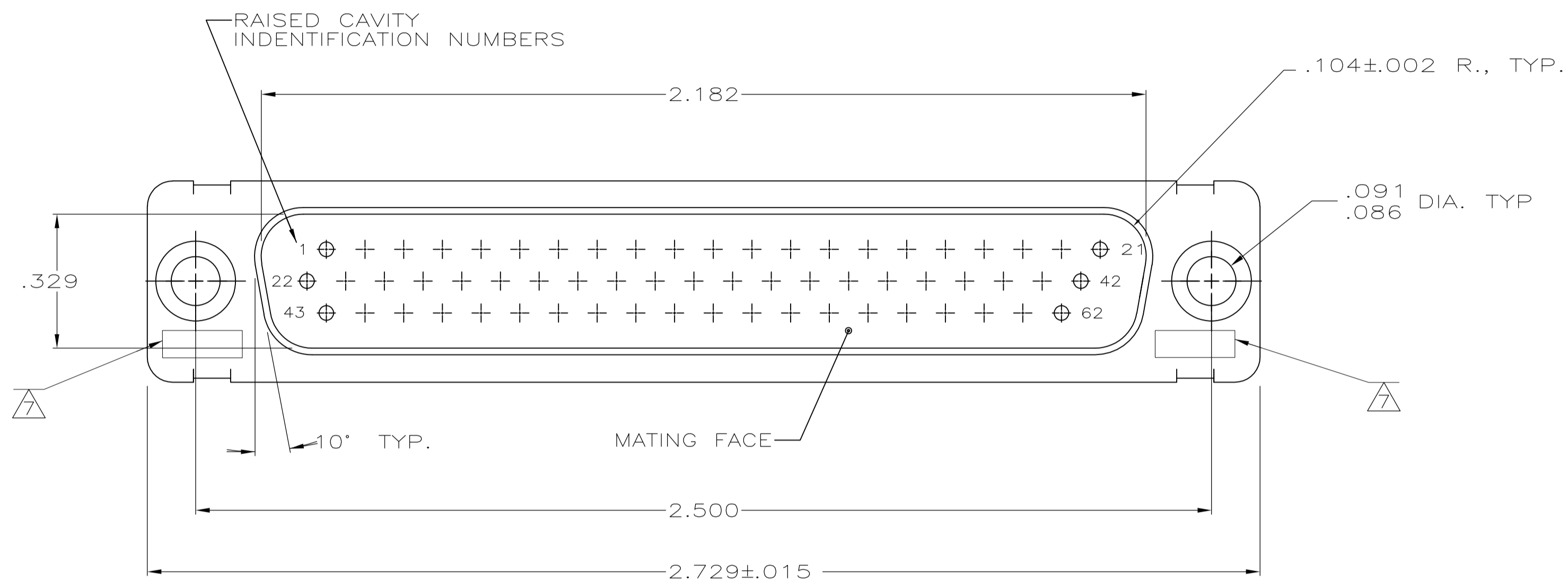


LOC		DIST		REVISIONS			
P	LTR	DESCRIPTION	DATE	DMN	APVD		
R		REV PER ECO-15-016062	10NOV15	KG	CD		



- THIS PLUG IS DESIGNED TO CONFORM TO THE LATEST ISSUE OF MIL-C-24308
 - MAX WIRE INSUL. TO BE USED WITH THIS PLUG IS .054 DIA.
 - METAL RETENTION CLIPS ARE INCLUDED IN INSERTS
 - PACKAGE MARKED M 24308/4-332F
 - THIS PLUG WILL ACCEPT SIZE 22 PIN CONTACT M 24308/13 OR AMP # 204370
- AMP PART NO. MARKED ON CONNECTOR REPRESENTS KIT NUMBER WITH CONTACTS
 UL/CSA DESIGNATION MARKED IN THIS AREA.

THIS DRAWING IS A CONTROLLED DOCUMENT.		DIN C.C.THOMAS 12-4-87		TE Connectivity	
DIMENSIONS: INCHES		TOLERANCES UNLESS OTHERWISE SPECIFIED:			
		0. PLC ± - 1. PLC ± - 2. PLC ± - 3. PLC ± 0.005 4. PLC ± - ANGLES ± 0°30'		APVD F.C.BALLEW III 1-25-88 NAME AMPLIMITE PLUG FOR PIN CONTACTS HI-DENSITY D CONNECTOR SIZE4, 62 POSN., SERIES 90 WITH FLOAT BUSHINGS APPLICATION SPEC SIZE CAGE CODE DRAWING NO. A1 00779 C=204531 WEIGHT CUSTOMER DRAWING SCALE 4:1 SHEET 1 OF 1 REV R	