

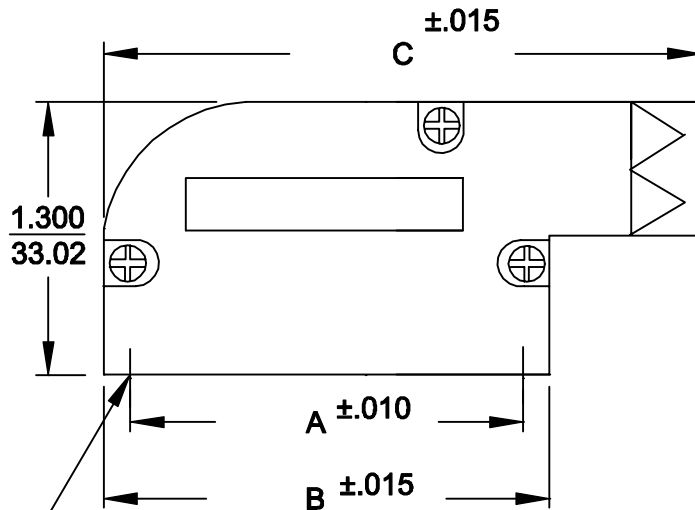
DESCRIPTION: **981 SERIES R/A BACKSHELL**

981-XXX-XXX-XX1

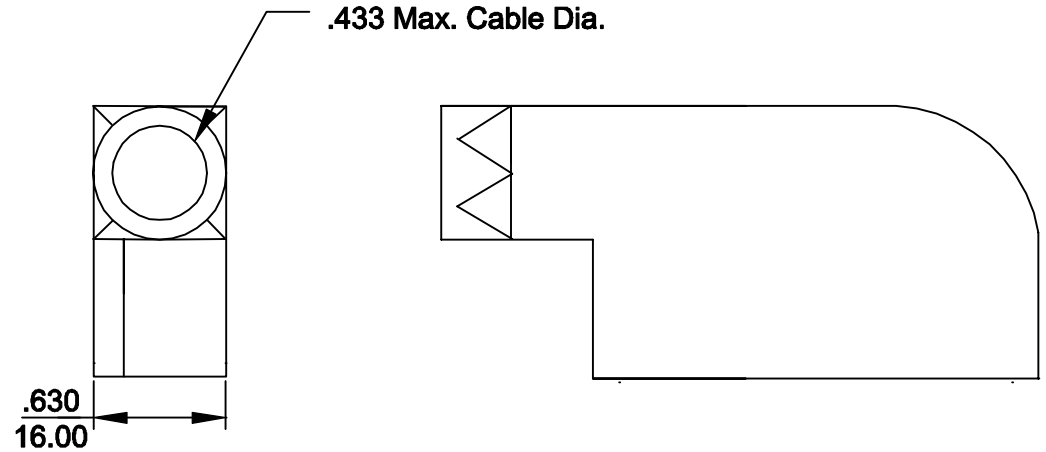
**BACKSHELL KIT INCLUDES:**

- (2) BACKSHELL HALVES
- (3) HOUSING SCREWS
- (1) GROMMET TREE  
(NON-CONDUCTIVE GROMMETS)

SERIES \_\_\_\_\_  
 POSITIONS \_\_\_\_\_  
 009 \_\_\_\_\_  
 015 \_\_\_\_\_  
 025 \_\_\_\_\_  
 MATERIAL \_\_\_\_\_  
 030 = ZINC \_\_\_\_\_  
 COLOR: \_\_\_\_\_  
 12 = NICKEL OVER COPPER \_\_\_\_\_  
 PUT-UPS \_\_\_\_\_  
 1 = KIT \_\_\_\_\_




4-40 INTERNAL THREADS



SIZE	A	B	C
9	.984	1.240	1.850
15	1.312	1.555	2.323
25	1.852	2.106	2.835

**MATERIAL: DIE-CAST ZINC ALLOY  
 NICKEL PLATED**

	THESE DRAWINGS AND SPECIFICATIONS ARE THE PROPERTY OF NorComp AND SHALL NOT BE REPRODUCED, COPIED OR USED AS THE BASIS FOR THE MANUFACTURE OR SALE OF APPARATUS WITHOUT WRITTEN PERMISSION.		DRAWN: <b>PAM JENKINS</b>	DATE: <b>7-23-99</b>
			CHECKED:	DATE:
<h1>NorComp</h1>			SCALE	SHEET OF
			DWG NO. <b>981-0XX-030-121</b>	