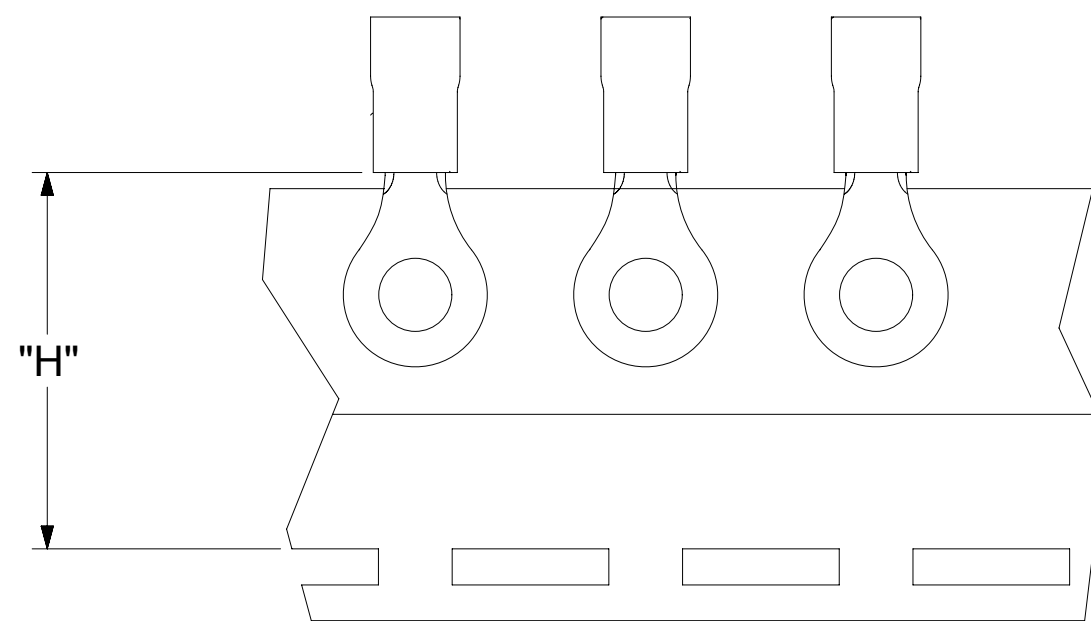
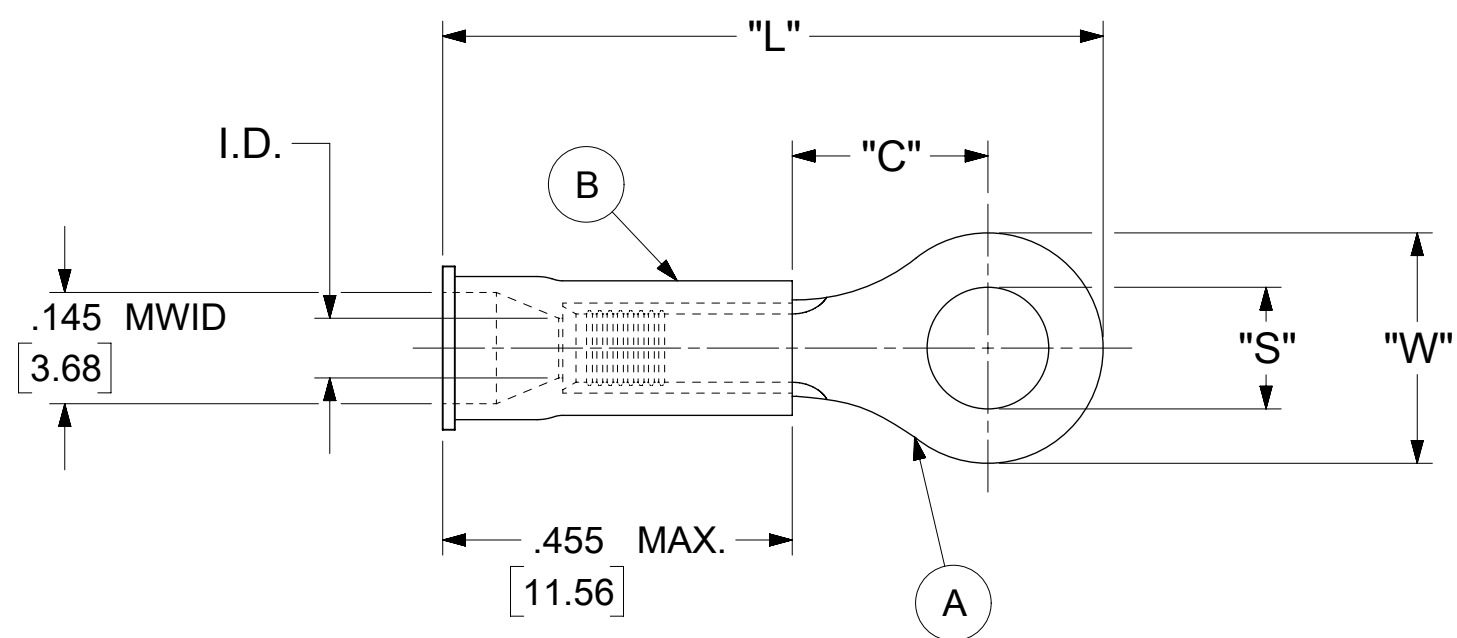


LOOSE PIECE		TAPE MOUNTED		SPECIFICATIONS							
MATERIAL NUMBER	ENGINEERING NUMBER	MATERIAL NUMBER	ENGINEERING NUMBER	STUD SIZE	"S" ±.005 [0.13]	"W" ±.010 [0.25]	"C" MIN.	"L" MAX.	"I.D." MIN.	"H"	STOCK ±.001 [0.025] THICKNESS
190540032	A-220-04X	---	---	4	.119 [3.02]	.225 [5.71]	.157 [3.99]	.759 [19.28]	.062 [1.57]	.98 [24.89]	.028 [0.71]
190540033	A-220-06X	---	---	6	.146 [3.71]						
190540035	A-221-06X	---	---	6	.146 [3.71]	.312 [7.92]	.270 [6.86]	.946 [23.26]	.062 [1.57]	.98 [24.89]	.028 [0.71]
190540037	A-221-08X	190540038	A-221-08XT	8	.173 [4.39]						
190540039	A-221-10X	190540040	A-221-10XT	10	.198 [5.03]						
190540042	A-222-14X	---	---	14	.265 [6.73]	.467 [11.86]	.386 [9.80]	1.110 [28.19]	.062 [1.57]	.98 [24.89]	.028 [0.71]
190540044	A-222-56X	---	---	56	.328 [8.33]						
190540048	A-226-38X	---	---	38	.390 [9.91]	.534 [13.56]	.552 [14.02]	1.309 [33.25]	.054 [1.37]	1.172 [29.77]	.031 [0.79]
190540051	A-232-04X	---	---	4	.119 [3.02]	.254 [6.45]	.240 [6.10]	.857 [21.77]	.062 [1.57]	.98 [24.89]	.028 [0.71]
190540052	A-232-06X	190540053	A-232-06XT	6	.146 [3.71]						
190540054	A-232-08X	---	---	8	.173 [4.39]						



PARTS ON TAPE

NOTES:

- MATERIAL:
 - (A). RING TONGUE TERMINAL: COPPER
PLATING: ELECTRO-TIN (.0003 MIN.)
 - (B). INSULATION: MOLDED PVC (RED)
- MWID: MAXIMUM WIRE INSULATION DIAMETER
- WIRE SIZE: 22 -18 AWG
.25 -1.5 MM²
- ALL DIMENSIONS IN INCHES/[MM].
- PARTS ARE ROHS COMPLIANT.
- DIMS. SHOWN ARE FOR REFERENCE ONLY.

THIS DRAWING CONTAINS INFORMATION THAT IS PROPRIETARY TO MOLEX ELECTRONIC TECHNOLOGIES, LLC AND SHOULD NOT BE USED WITHOUT WRITTEN PERMISSION													
DIMENSION UNITS INCH		SCALE NTS		CURRENT REV DESC: OBSOLETE PART NUMBERS AS PER PCN#512131				molex					
GENERAL TOLERANCES (UNLESS SPECIFIED)				EC NO: 727779		RING TONGUE TERMINAL INSULKRIMP 200-SERIES							
4 PLACES	±	MM	INCH	DRWN: ANIKES1		2022/09/30		PRODUCT CUSTOMER DRAWING					
3 PLACES	±	± 0.005		CHK'D: GGA		2022/11/29							
2 PLACES	±	0.13	± 0.01	APPR: GGA		2022/11/29		DOCUMENT NUMBER 190540031					
1 PLACE	±	0.25	±	INITIAL REVISION:						DOC TYPE PSD	DOC PART 000	REVISION A3	
0 PLACES	±		±	DRWN: ABENJAMINLW		2019/08/23		MATERIAL NUMBER SEE TABLE		CUSTOMER GENERAL MARKET		SHEET NUMBER 1 OF 1	
ANGULAR TOL	±	0.5 °		APPR: JMACNEIL		2019/09/05							
DRAFT WHERE APPLICABLE MUST REMAIN WITHIN DIMENSIONS				THIRD ANGLE PROJECTION		DRAWING C-SIZE		SERIES 19054					