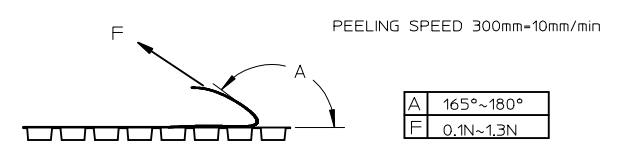


DETAIL 1

SCALE 2:1

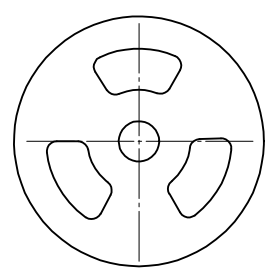
Cover Tape peeling force



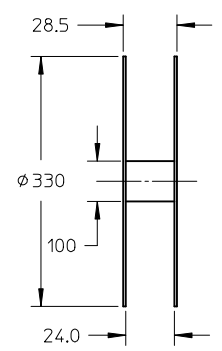
PEELING SPEED 300mm~10mm/min

NOTE1:

1. POCKET TAPE MATERIAL: 0.40 THICKNESS PS CLARITY.
2. REEL SIZE φ13".
3. DIMENSIONS MEASURED FROM WORKINGPLANE.
4. GENERAL TOLERANCE: ±0.20MM UNLESS OTHERWISE STATED.



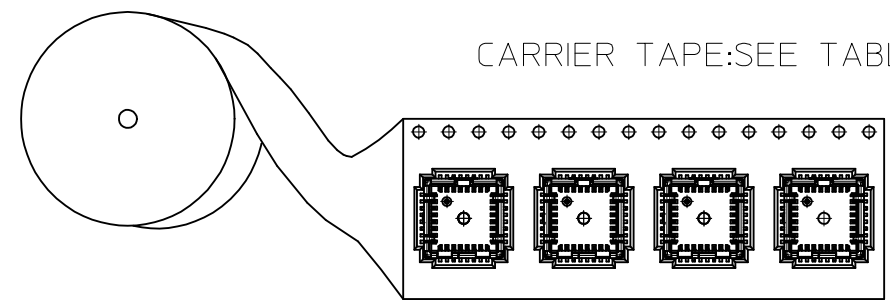
REEL



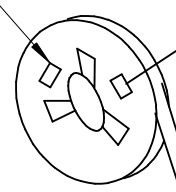
RELEASED EC NO: SH2014-0358 DRW: WJH00 2014/03/13 CHKD: APPR: AYIN 2014/03/27	DESCRIPTION QUALITY SYMBOLS $F_A=0$ $F_G=0$ $F_P=0$	GENERAL TOLERANCES (UNLESS SPECIFIED)		DIMENSION STYLE MM ONLY		SCALE 1:1	DESIGN UNITS METRIC	THIRD ANGLE PROJECTION		
		4 PLACES ± --- ± ---	mm INCH	DRAWN BY WFDENG	DATE 2009/04/17	TITLE TAPE AND REEL PACKAGE FOR SINK TYPE CAMERA SOCKET				
		3 PLACES ± --- ± ---		CHECKED BY WFDENG	DATE 2009/04/17	molex				
		2 PLACES ± 0.20 ± --- 1 PLACE ± 0.3 ± ---		APPROVED BY WFDENG	DATE 2010/04/27	MATERIAL NO. 1050282001		DOCUMENT NO. PK-105028-201		SHEET NO. 1 OF 2
DRAFT WHERE APPLICABLE MUST REMAIN WITHIN DIMENSIONS		ANGULAR ± 5 °		THIS DRAWING CONTAINS INFORMATION THAT IS PROPRIETARY TO MOLEX INCORPORATED AND SHOULD NOT BE USED WITHOUT WRITTEN PERMISSION						

OPTION	FOR PRODUCT PART NO	PARTS PER CARTON (S.P.Q)	PARTS PER REEL	TOTAL REELS PER CARTON
1	1050282001	2400	800	3
2	1050282011	2400	800	3
3	1050282021	2400	800	3
4	1050282031	2400	800	3

CARRIER TAPE:SEE TABLE 1



MOLEX LABEL

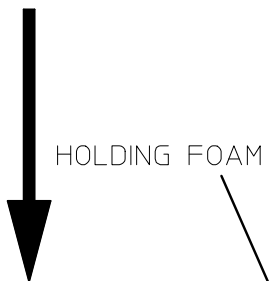
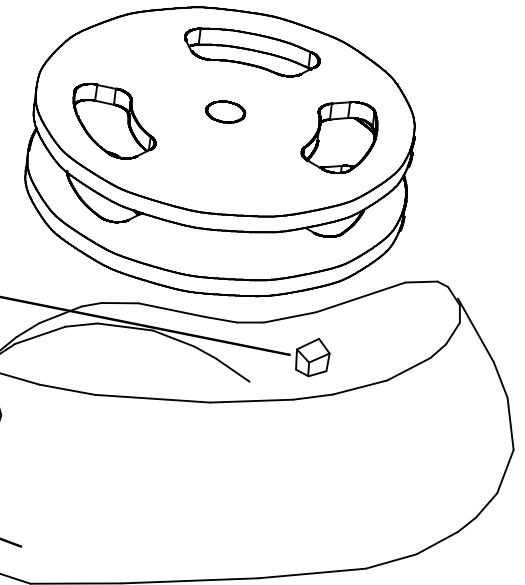


CUSTOMER LABEL

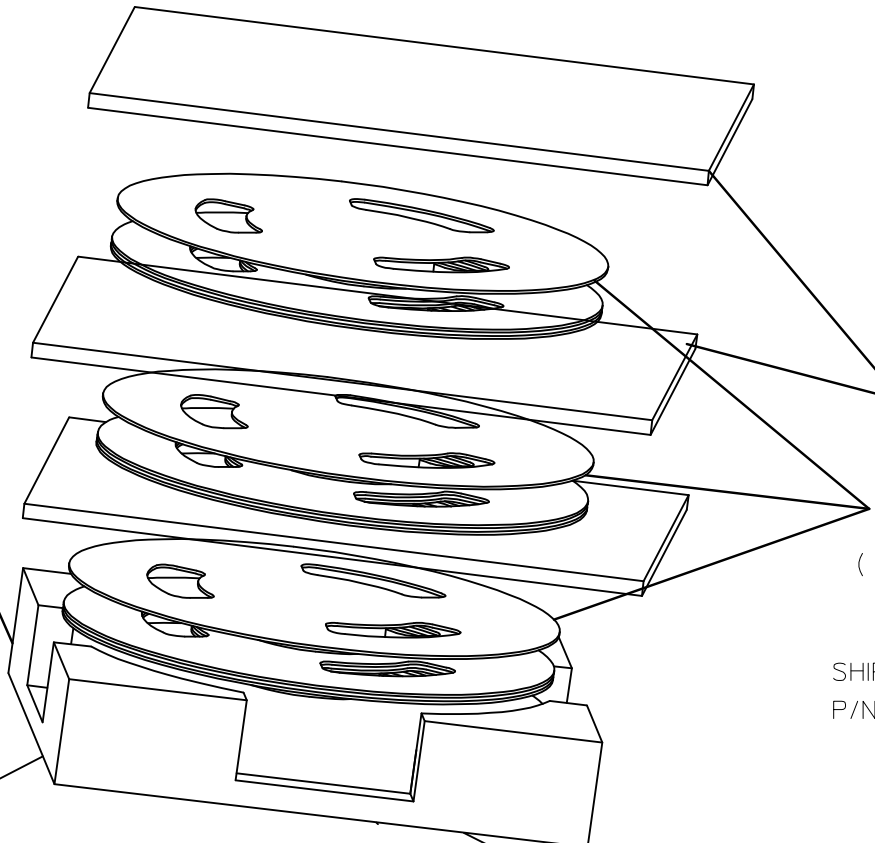
800PCS/REEL

REEL :885960354  
COVER TAPE:894990121 WATERPROOF BAG 885960136

DESICCANT



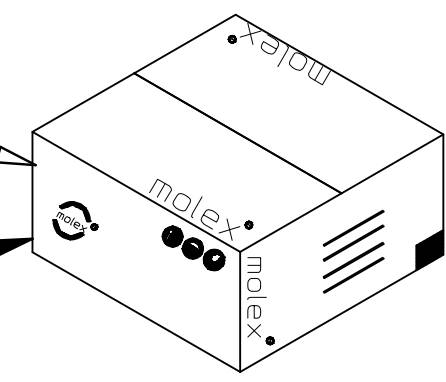
HOLDING FOAM



FLAT FOAM

PACKAGING REEL WITH WATERPROOF  
( LOADED WITH PRODUCT)

SHIPPING CARTON  
P/N : 885960363



NOTE:

1. STAMPLES SHOULD ONLY BE USED TO SET UP CARTON.  
ALL CARTON CLOSURES MUST BE DONE WITH TAPE.
2. FILL PACKAGING REELS WITH THE QUANTITIES AS INDICATED  
IN THE CHART

WATERPROOF BAG	885960136
CARRIER TAPE	885960497
COVER TAPE	894990121
REEL	885960354
HOLDING FOAM	885960719
FLAT FORM	885960720
CARTON	885960363
DESCRIPTION	P/N

RELEASED EC NO: SH2014-0358 DRWN:WJHUO 2014/03/13 CHKD: APPR:AY IN 2014/03/27	QUALITY SYMBOLS	GENERAL TOLERANCES (UNLESS SPECIFIED)		DIMENSION STYLE MM ONLY		SCALE 1:1	DESIGN UNITS METRIC	THIRD ANGLE PROJECTION
	$F_A=0$	4 PLACES	mm	INCH	DRAWN BY	DATE	TITLE TAPE AND REEL PACKAGE FOR SINK TYPE CAMERA SOCKET <b>molex</b>	
	$F_E=0$	3 PLACES	± ---	± ---	CHECKED BY	DATE		
	$F_F=0$	2 PLACES	± 0.20	± ---	APPROVED BY	DATE		
	1 PLACE	± 0.3	± ---	WFDENG	2010/04/27			
		ANGULAR ± 5 °		MATERIAL NO.		DOCUMENT NO.	SHEET NO.	
		DRAFT WHERE APPLICABLE MUST REMAIN WITHIN DIMENSIONS		1050282001		PK-105028-201		2 OF 2
		THIS DRAWING CONTAINS INFORMATION THAT IS PROPRIETARY TO MOLEX INCORPORATED AND SHOULD NOT BE USED WITHOUT WRITTEN PERMISSION						