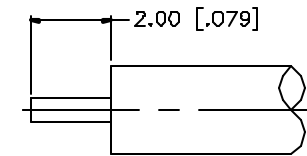
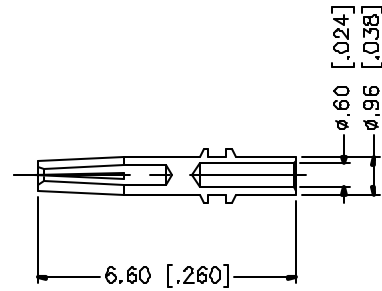
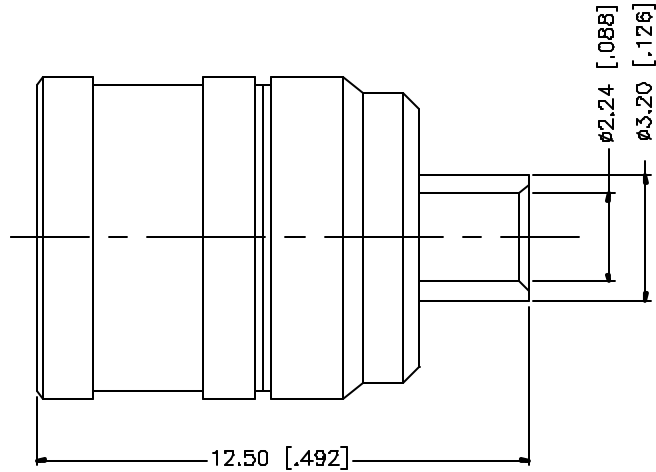


REV.	DATE	DESCRIPTION
A	03/27/05	UPDATE DRAWING FORMAT



RECOMMENDED
CABLE STRIPPING DIM'S

8					<small>UNLESS OTHERWISE SPECIFIED DIMENSIONS ARE IN MILLIMETERS. DIMENSIONS IN () ARE IN INCHES AND FOR CUSTOMER REFERENCE ONLY.</small> <small>UNLESS OTHERWISE SPECIFIED TOLERANCES FOR MILLIMETERS ARE:</small> 0.5 - 8mm ± 0.20mm 8 - 30mm ± 0.40mm 30 - 120mm ± 0.50mm <small>UNLESS OTHERWISE SPECIFIED TOLERANCES FOR INCHES ARE:</small> .020 - .315 = ± 0.007" .315 - 1.180 = ± 0.015" 1.180 - 4.724 = ± 0.020"	APPROVALS	DATE	<h1 style="color: blue; text-align: center;">Amphenol Connex</h1>			
7				DRAWN		G.R.S.	03/27/05		PART DESCRIPTION <h2 style="text-align: center;">SMB DIRECT SOLDER PLUG (FOR .085", .086")</h2>		
6				CHECKED							
5				ISSUED							
4					SHEET	1 OF 1		PART NO.	142212		
3	CONTACT PIN	BRASS	GOLD	1	Dwg. No.			142212.DWG	REV. A	SIZE A	SCALE NA
2	INSULATOR	TEFLON	NATURAL	1	Dwg. No.			142212.DWG	REV. A	SIZE A	SCALE NA
1	BODY	BRASS	GOLD	1	Dwg. No.			142212.DWG	REV. A	SIZE A	SCALE NA
	DESCRIPTION	MATERIAL	FINISH	QTY	Dwg. No.			142212.DWG	REV. A	SIZE A	SCALE NA
					DO NOT SCALE DRAWING						