

AFM Series

Single Phase Medical Grade Inlet-type EMI Filter



These series range of filters with IEC Inlet are designed to suppress undesirable electrical disturbances in Power Lines. They limit the amplitude of interfering voltages on AC power lines and prevent them from propagating into or out of the filtered equipment.

FEATURES

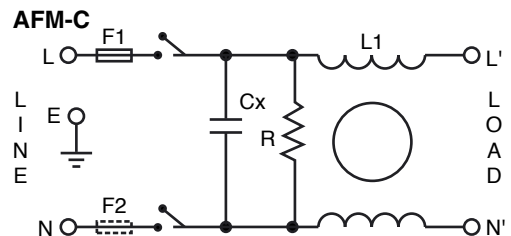
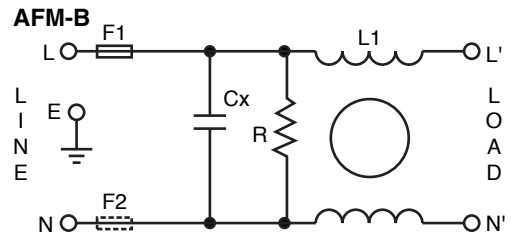
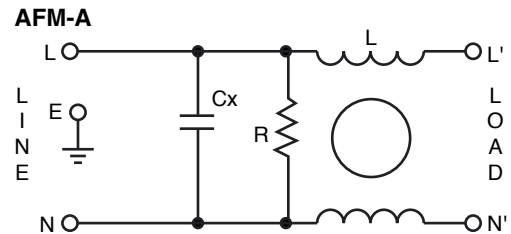
- Rated Current up to 15A
- Low Leakage
- High Conducted attenuation performance
- Excellent performance/size ratio
- Integral IEC Connector
- Single/Double Fuse Option
- Double Pole/Single Throw Switch

APPLICATIONS

- Medical Equipment
- Diagnostic Equipment
- X ray Machine



CIRCUIT DIAGRAMS



CHARACTERISTICS

| | |
|------------------------------------|---|
| Max. Cont. Oper. Voltage | 250VAC |
| Operating Frequency | 50/60Hz |
| Current ratings | AFM-A: 1A to 15A @40°C, AFM-B: 1A to 6A @40°C; AFM-C: 1A to 10A @40°C |
| High Potential test voltage | L to G 2120VDC for 1 min.; L to L 1414VDC for 1 min. |
| Overload Capability | 135% of Rated current for 15 min. |
| Design | Corresponding to UL 60939-3, CSA 22.2 No.8-13 and IEC 60939 |
| Flammability | Corresponding to UL 94 V-0 |
| Temperature range | -25°C to +85°C |
| Climatic Category | 25/85/21 |
| Enclosure Material | AFM-A and B: Aluminium; AFM-C: CRCA |
| Termination | Fastons 6.3x0.8 |

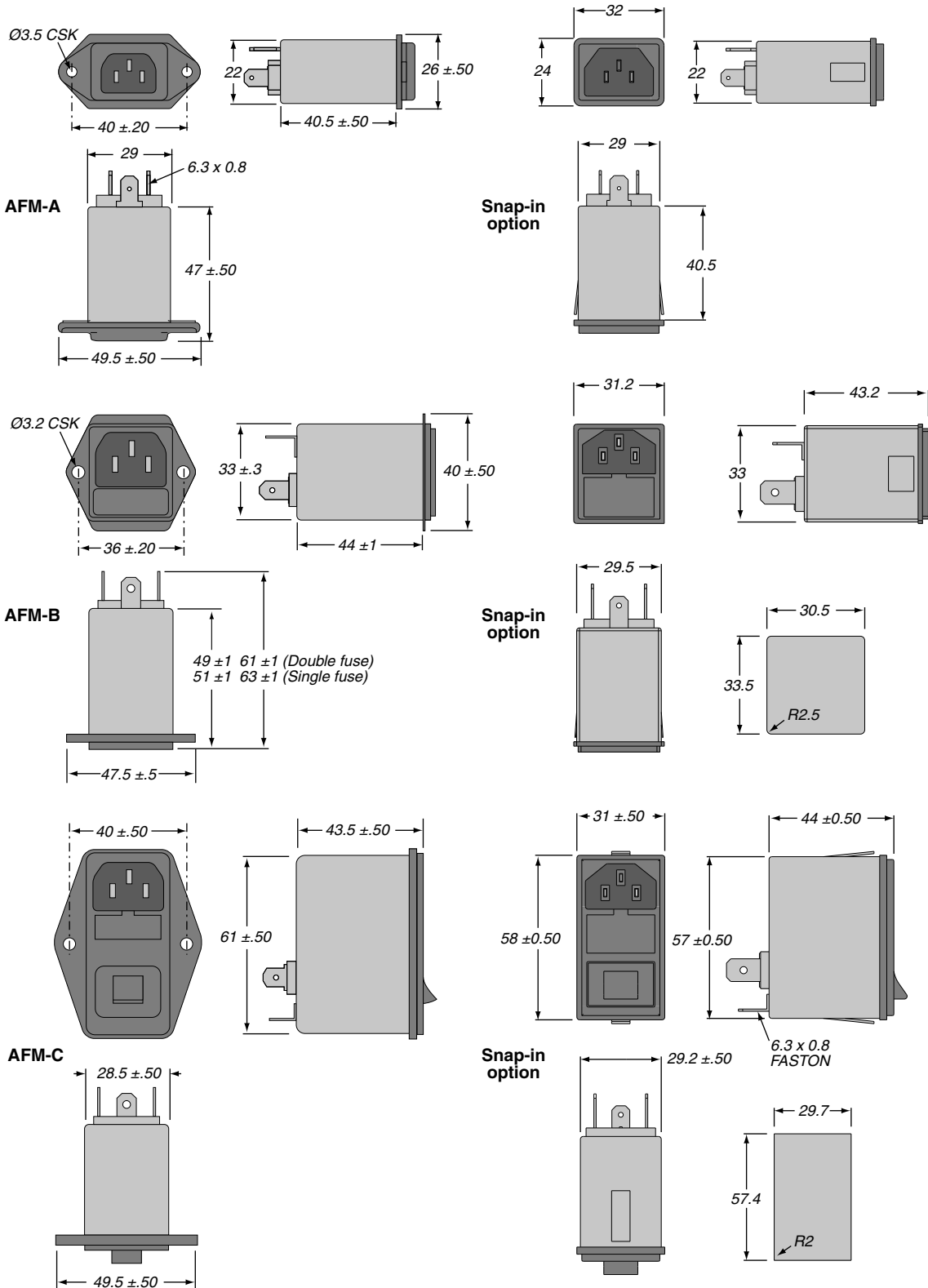
(continued)

AFM Series

Single Phase Medical Grade Inlet-type EMI Filter

DIMENSIONS

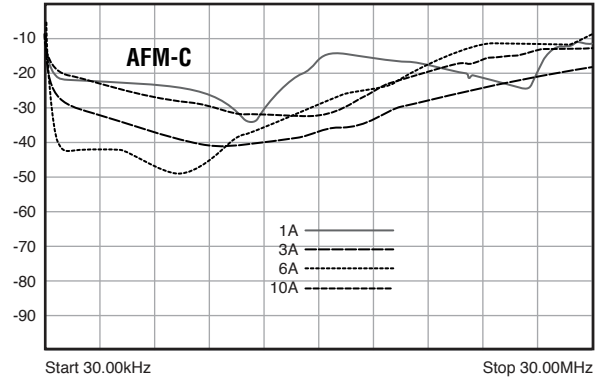
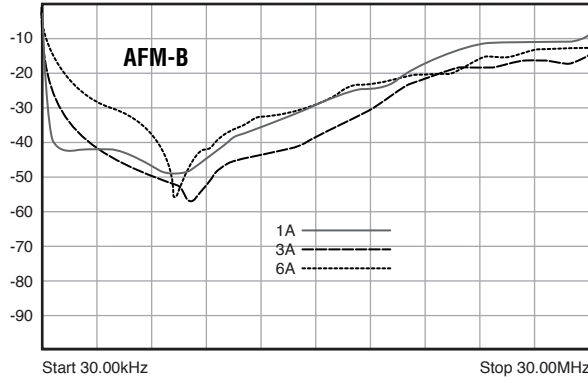
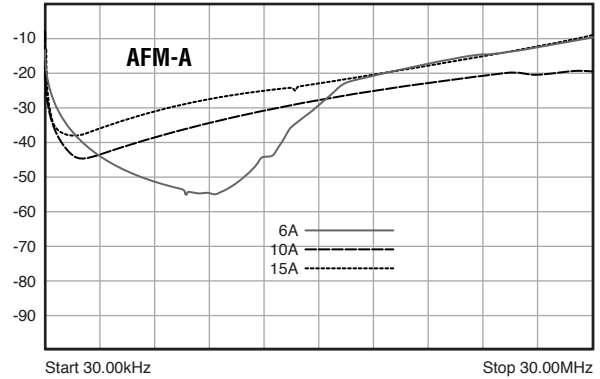
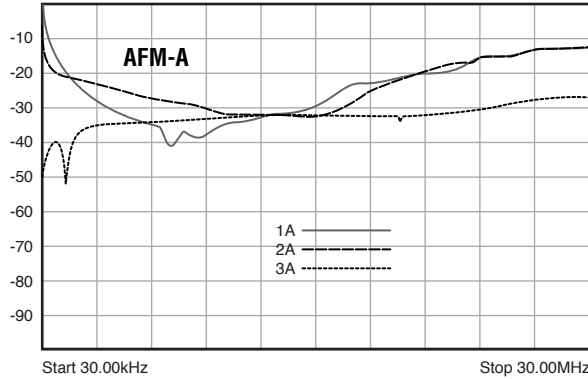
All dimensions in mm; Tolerances according to ISO2768-m



AFM Series

Single Phase Medical Grade Inlet-type EMI Filter

INSERTION LOSS



ORDERING INFORMATION

A F M - A 0 2 - S D
 Series Medical Grade Configuration Current rating Fuse Mounting
 A = Inlet filter base S = Screw mount
 B = Inlet filter fuse N = Snap-in mount
 C = Inlet filter fuse and switch
 D = Dual blank = single/none

| Part No. | Rated current @40°C | Weight (g) |
|-----------|---------------------|------------|
| AFM-A03S | 3A | 60 |
| AFM-A06S | 6A | 60 |
| AFM-A10S | 10A | 60 |
| AFM-A15S | 15A | 60 |
| AFM-B01S | 1A | 60 |
| AFM-B03S | 3A | 60 |
| AFM-B06S | 6A | 60 |
| AFM-B01SD | 1A | 60 |
| AFM-B03SD | 3A | 60 |
| AFM-B06SD | 6A | 60 |
| AFM-C01S | 1A | 120 |
| AFM-C03S | 3A | 120 |
| AFM-C06S | 6A | 120 |
| AFM-C10S | 10A | 120 |