

DESIGNED & DIMENSIONED  
IN INCHES[MILLIMETERS]

DO NOT  
SCALE FROM  
THIS PRINT

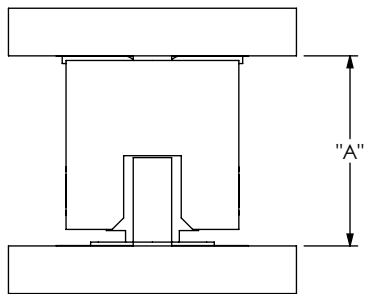


FIG 1  
SFM-D-SM MATED WITH TFM-D-SM

		TABLE 1			
		SFM-D LEAD STYLE		WIPE	
		-02 / -L2 / -T2		FULLY MATED	MIN @ "A" MAX
TFM-D LEAD STYLE		"A" FULLY MATED	"A" MAX	FULLY MATED	MIN @ "A" MAX
	-02	.248 [6.30]	.255 [6.48]	.022 [0.56]	.015 [0.38]
	-12	.318 [8.08]	.333 [8.46]	.030 [0.76]	.015 [0.38]
	-22	.388 [9.86]	.403 [10.24]	.030 [0.76]	.015 [0.38]
	-32	.463 [11.76]	.478 [12.14]	.030 [0.76]	.015 [0.38]

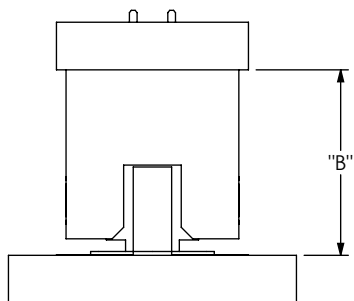


FIG 2  
SFM-D-SM MATED WITH TFM-D-TH

		TABLE 2			
		SFM-D LEAD STYLE		WIPE	
		-02 / -L2 / -T2		FULLY MATED	MIN @ "B" MAX
TFM-D LEAD STYLE		"B" FULLY MATED	"B" MAX	FULLY MATED	MIN @ "B" MAX
	-01	.242 [6.15]	.249 [6.32]	.022 [0.56]	.015 [0.38]
	-03	.242 [6.15]	.257 [6.53]	.030 [0.76]	.015 [0.38]
	-11	.312 [7.92]	.327 [8.31]	.030 [0.76]	.015 [0.38]
	-13	.312 [7.92]	.327 [8.31]	.030 [0.76]	.015 [0.38]
	-21	.382 [9.70]	.397 [10.08]	.030 [0.76]	.015 [0.38]
	-23	.382 [9.70]	.397 [10.08]	.030 [0.76]	.015 [0.38]
	-31	.457 [11.61]	.472 [11.99]	.030 [0.76]	.015 [0.38]

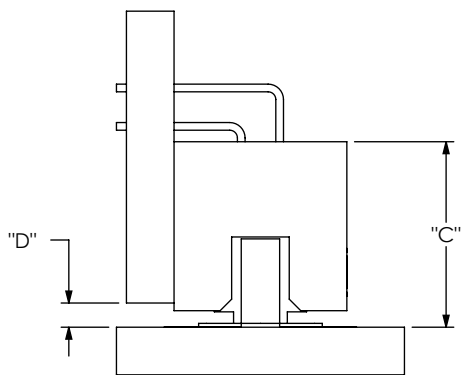


FIG 3  
SFM-D-SM MATED WITH TFM-D-RA

		TABLE 3				WIPE	
		SFM-D LEAD STYLE				FULLY MATED	MIN @ "C" MAX
		-02 / -L2 / -T2					
TFM-D LEAD STYLE		"C" FULLY MATED	"C" MAX	"D" FULLY MATED	"D" MAX		
		-01-RA	.242 [6.15]	.260 [6.60]	.032 [0.81]	.050 [1.27]	.033 [0.84]

NOTES:

1. ALL DIMENSIONS BASED ON NOMINAL VALUES FOR SAMTEC RECOMMENDED PCB LAYOUTS.
2. ALTHOUGH MAX DIMENSION ARE LISTED SAMTEC RECOMMENDS FULLY MATING COMPONENTS.

C:\EnterpriseVault\DWG\MISC\MKTG\XFM MATED DOCUMENT-MKT.SLDDRW

**PROPRIETARY NOTE**  
THIS DOCUMENT CONTAINS CONFIDENTIAL AND PROPRIETARY INFORMATION AND ALL DESIGN, MANUFACTURING, REPRODUCTION, USE, PATENT RIGHTS AND SALES RIGHTS ARE EXPRESSLY RESERVED BY SAMTEC, INC. THIS DOCUMENT SHALL NOT BE DISCLOSED, IN WHOLE OR PART, TO ANY UNAUTHORIZED PERSON OR ENTITY NOR REPRODUCED, TRANSFERRED OR INCORPORATED IN ANY OTHER PROJECT IN ANY MANNER WITHOUT THE EXPRESS WRITTEN CONSENT OF SAMTEC, INC.



520 PARK EAST BLVD., NEW ALBANY, IN 47150  
PHONE: 812-944-6733 FAX: 812-948-5047  
e-Mail: info@SAMTEC.com code: 55322

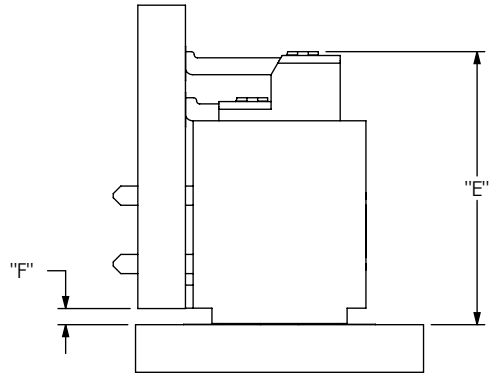


FIG 4  
SFM-D-SM MATED WITH TFM-DH

		TABLE 4					
		SFM-D LEAD STYLE				WIPE	
		-02 / -L2 / -T2					
		"E" FULLY MATED	"E" MAX	"F" FULLY MATED	"F" MAX	FULLY MATED	MIN @ "E" MAX
TFM-D LEAD STYLE	-02-DH	.356 [9.04]	.382 [9.70]	.021 [0.53]	.047 [1.19]	.041 [1.04]	.015 [0.38]

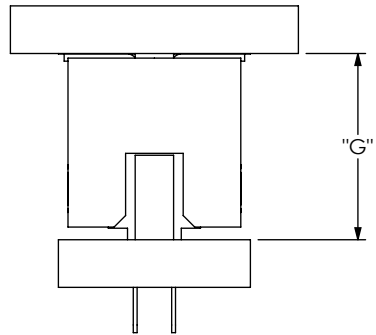


FIG 5  
SFM-D-TH MATED WITH TFM-D-SM

		TABLE 5			
		SFM-D LEAD STYLE		WIPE	
		-01 / -03 / -L1 / -L3 / -T1			
		"G" FULLY MATED	"G" MAX	FULLY MATED	MIN @ "G" MAX
TFM-D LEAD STYLE	-02	.243 [6.17]	.250 [6.35]	.022 [0.56]	.015 [0.38]
	-12	.313 [7.95]	.328 [8.33]	.030 [0.76]	.015 [0.38]
	-22	.383 [9.73]	.398 [10.11]	.030 [0.76]	.015 [0.38]
	-32	.458 [11.63]	.473 [12.01]	.030 [0.76]	.015 [0.38]

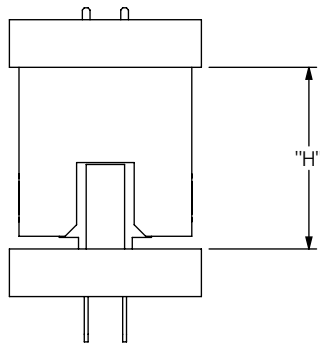


FIG 6  
SFM-D-TH MATED WITH TFM-D-TH

		TABLE 6			
		SFM-D LEAD STYLE		WIPE	
		-01 / -03 / -L1 / -L3 / -T1			
		"H" FULLY MATED	"H" MAX	FULLY MATED	MIN @ "H" MAX
TFM-D LEAD STYLE	-01	.237 [6.02]	.244 [6.20]	.022 [0.56]	.015 [0.38]
	-03	.237 [6.02]	.252 [6.40]	.030 [0.76]	.015 [0.38]
	-11	.307 [7.80]	.322 [8.18]	.030 [0.76]	.015 [0.38]
	-13	.307 [7.80]	.322 [8.18]	.030 [0.76]	.015 [0.38]
	-21	.377 [9.58]	.392 [9.96]	.030 [0.76]	.015 [0.38]
	-23	.377 [9.58]	.392 [9.96]	.030 [0.76]	.015 [0.38]
-31	.452 [11.48]	.467 [11.86]	.030 [0.76]	.015 [0.38]	

PROPRIETARY NOTE  
THIS DOCUMENT CONTAINS CONFIDENTIAL AND PROPRIETARY INFORMATION AND ALL DESIGN, MANUFACTURING, REPRODUCTION, USE, PATENT RIGHTS AND SALES RIGHTS ARE EXPRESSLY RESERVED BY SAMTEC, INC. THIS DOCUMENT SHALL NOT BE DISCLOSED, IN WHOLE OR PART, TO ANY UNAUTHORIZED PERSON OR ENTITY NOR REPRODUCED, TRANSFERRED OR INCORPORATED IN ANY OTHER PROJECT IN ANY MANNER WITHOUT THE EXPRESS WRITTEN CONSENT OF SAMTEC, INC.



520 PARK EAST BLVD, NEW ALBANY, IN 47150  
PHONE: 812-944-6733 FAX: 812-948-5047  
e-Mail: info@SAMTEC.com code: 55322

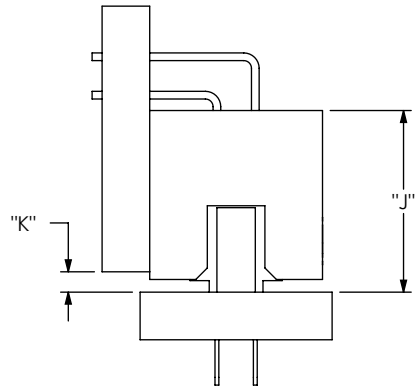


FIG 7  
SFM-D-TH MATED WITH TFM-D-RA

		SFM-D LEAD STYLE				WIPE	
		-01 / -03 / -L1 / -L3 / -T1					
		"J" FULLY MATED	"J" MAX	"K" FULLY MATED	"K" MAX	FULLY MATED	MIN @ "J" MAX
TFM-D LEAD STYLE	-01-RA	.237 [6.02]	.255 [6.48]	.027 [0.67]	.045 [1.13]	.033 [0.84]	.015 [0.38]

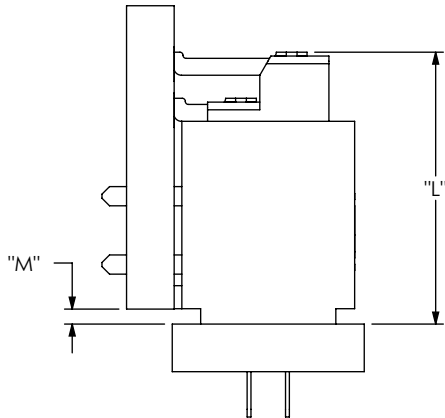


FIG 8  
SFM-D-TH MATED WITH TFM-DH

		SFM-D LEAD STYLE				WIPE	
		-01 / -03 / -L1 / -L3 / -T1					
		"L" FULLY MATED	"L" MAX	"M" FULLY MATED	"M" MAX	FULLY MATED	MIN @ "L" MAX
TFM-D LEAD STYLE	-02-DH	.354 [8.99]	.377 [9.58]	.020 [0.51]	.043 [1.09]	.038 [0.97]	.015 [0.38]

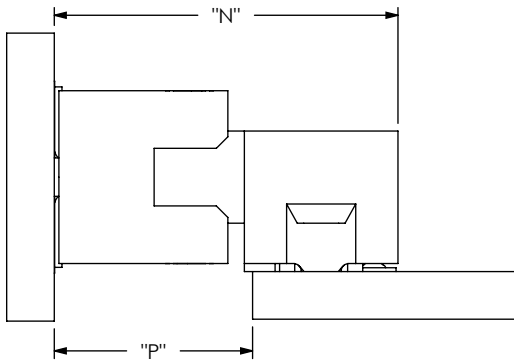


FIG 9  
SFM-DH MATED WITH TFM-D-SM

		SFM-D LEAD STYLE				WIPE	
		-02-DH					
		"N" FULLY MATED	"N" MAX	"P" FULLY MATED	"P" MAX	FULLY MATED	MIN @ "N" MAX
TFM-D LEAD STYLE	-02	.448 [11.38]	.455 [11.56]	.258 [6.55]	.265 [6.73]	.022 [0.56]	.015 [0.38]
	-12	.518 [13.16]	.533 [13.54]	.328 [8.33]	.343 [8.71]	.030 [0.76]	.015 [0.38]
	-22	.588 [14.94]	.603 [15.32]	.398 [10.11]	.413 [10.49]	.030 [0.76]	.015 [0.38]
	-32	.663 [16.84]	.678 [17.22]	.473 [12.01]	.488 [12.40]	.030 [0.76]	.015 [0.38]

PROPRIETARY NOTE  
THIS DOCUMENT CONTAINS CONFIDENTIAL AND PROPRIETARY INFORMATION AND ALL DESIGN, MANUFACTURING, REPRODUCTION, USE, PATENT RIGHTS AND SALES RIGHTS ARE EXPRESSLY RESERVED BY SAMTEC, INC. THIS DOCUMENT SHALL NOT BE DISCLOSED, IN WHOLE OR PART, TO ANY UNAUTHORIZED PERSON OR ENTITY NOR REPRODUCED, TRANSFERRED OR INCORPORATED IN ANY OTHER PROJECT IN ANY MANNER WITHOUT THE EXPRESS WRITTEN CONSENT OF SAMTEC, INC.



520 PARK EAST BLVD, NEW ALBANY, IN 47150  
PHONE: 812-944-6733 FAX: 812-948-5047  
e-Mail: info@SAMTEC.com code: 55322

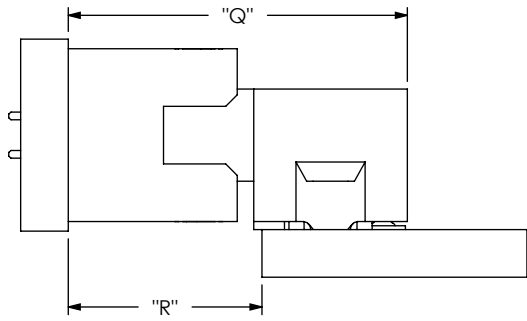


FIG 10  
SFM-DH MATED WITH TFM-D-TH

		TABLE 10					
		SFM-D LEAD STYLE				WIPE	
		-02-DH					
		"Q" FULLY MATED	"Q" MAX	"R" FULLY MATED	"R" MAX	FULLY MATED	MIN @ "Q" MAX
TFM-D LEAD STYLE	-01	.442 [11.23]	.449 [11.40]	.252 [6.40]	.259 [6.58]	.022 [0.56]	.015 [0.38]
	-03	.442 [11.23]	.457 [11.61]	.252 [6.40]	.267 [6.78]	.030 [0.76]	.015 [0.38]
	-11	.512 [13.00]	.527 [13.39]	.322 [8.18]	.337 [8.56]	.030 [0.76]	.015 [0.38]
	-13	.512 [13.00]	.527 [13.39]	.322 [8.18]	.337 [8.56]	.030 [0.76]	.015 [0.38]
	-21	.582 [14.78]	.597 [15.16]	.392 [9.96]	.407 [10.34]	.030 [0.76]	.015 [0.38]
	-23	.582 [14.78]	.597 [15.16]	.392 [9.96]	.407 [10.34]	.030 [0.76]	.015 [0.38]
	-31	.657 [16.69]	.672 [17.07]	.467 [11.86]	.482 [12.24]	.030 [0.76]	.015 [0.38]

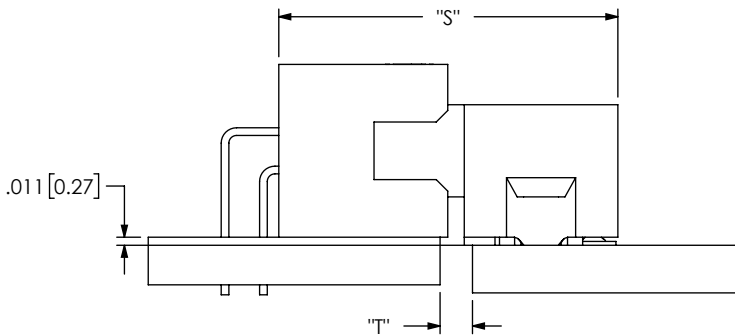


FIG 11  
SFM-DH MATED WITH TFM-D-RA

		TABLE 11					
		SFM-D LEAD STYLE				WIPE	
		-02-DH					
		"S" FULLY MATED	"S" MAX	"T" FULLY MATED	"T" MAX	FULLY MATED	MIN @ "S" MAX
TFM-D LEAD STYLE	-01-RA	.442 [11.23]	.460 [11.68]	.042 [1.07]	.060 [1.52]	.033 [0.84]	.015 [0.38]

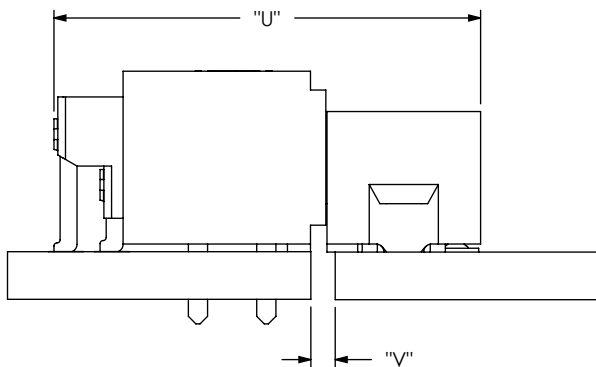


FIG 12  
SFM-DH MATED WITH TFM-DH

		TABLE 12					
		SFM-D LEAD STYLE				WIPE	
		-02-DH					
		"U" FULLY MATED	"U" MAX	"V" FULLY MATED	"V" MAX	FULLY MATED	MIN @ "U" MAX
TFM-D LEAD STYLE	-02-DH	.556 [14.12]	.582 [14.78]	.032 [0.81]	.058 [1.47]	.041 [1.04]	.015 [0.38]

PROPRIETARY NOTE  
THIS DOCUMENT CONTAINS CONFIDENTIAL AND PROPRIETARY INFORMATION AND ALL DESIGN, MANUFACTURING, REPRODUCTION, USE, PATENT RIGHTS AND SALES RIGHTS ARE EXPRESSLY RESERVED BY SAMTEC, INC. THIS DOCUMENT SHALL NOT BE DISCLOSED, IN WHOLE OR PART, TO ANY UNAUTHORIZED PERSON OR ENTITY NOR REPRODUCED, TRANSFERRED OR INCORPORATED IN ANY OTHER PROJECT IN ANY MANNER WITHOUT THE EXPRESS WRITTEN CONSENT OF SAMTEC, INC.



520 PARK EAST BLVD, NEW ALBANY, IN 47150  
PHONE: 812-944-6733 FAX: 812-948-5047  
e-Mail: info@SAMTEC.com code: 55322

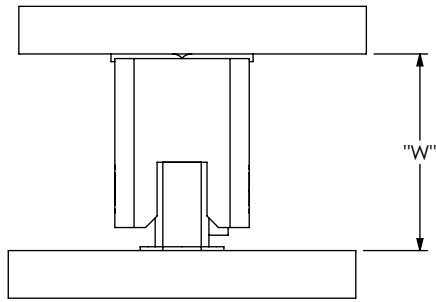


FIG 13  
SFM-S-SM MATED WITH TFM-S-SM

		TABLE 13			
		SFM-S LEAD STYLE		WIPE	
		-02 / -L2 / -T2			
TFM-S LEAD STYLE		"W" FULLY MATED	"W" MAX	FULLY MATED	MIN @ "W" MAX
		-02	.256 [6.50]	.256 [6.50]	.015 [0.38]

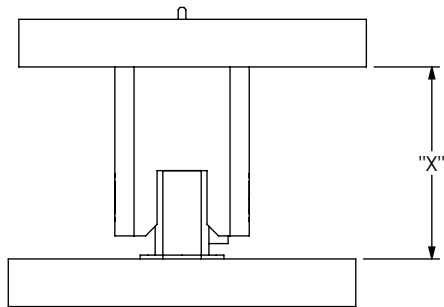


FIG 14  
SFM-S-SM MATED WITH TFM-S-TH

		TABLE 14			
		SFM-S LEAD STYLE		WIPE	
		-02 / -L2 / -T2			
TFM-S LEAD STYLE		"X" FULLY MATED	"X" MAX	FULLY MATED	MIN @ "X" MAX
		-01	.250 [6.35]	.250 [6.35]	.015 [0.38]
-03	.250 [6.35]	.257 [6.53]	.022 [0.56]	.015 [0.38]	

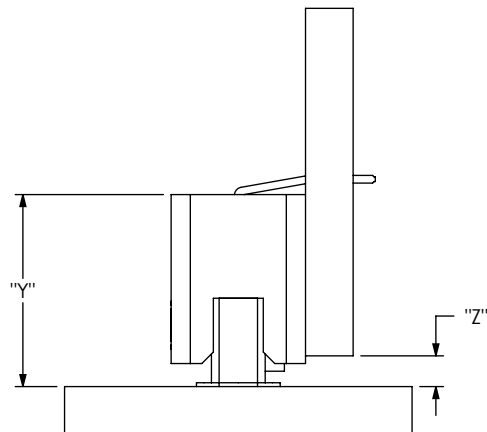


FIG 15  
SFM-S-SM MATED WITH TFM-S-RA

		TABLE 15					
		SFM-S LEAD STYLE				WIPE	
		-02 / -L2 / -T2					
TFM-S LEAD STYLE		"Y" FULLY MATED	"Y" MAX	"Z" FULLY MATED	"Z" MAX	FULLY MATED	MIN @ "Y" MAX
		-01-RA	.250 [6.35]	.254 [6.45]	.040 [1.02]	.044 [1.12]	.019 [0.48]

PROPRIETARY NOTE  
THIS DOCUMENT CONTAINS CONFIDENTIAL AND PROPRIETARY INFORMATION AND ALL DESIGN, MANUFACTURING, REPRODUCTION, USE, PATENT RIGHTS AND SALES RIGHTS ARE EXPRESSLY RESERVED BY SAMTEC, INC. THIS DOCUMENT SHALL NOT BE DISCLOSED, IN WHOLE OR PART, TO ANY UNAUTHORIZED PERSON OR ENTITY NOR REPRODUCED, TRANSFERRED OR INCORPORATED IN ANY OTHER PROJECT IN ANY MANNER WITHOUT THE EXPRESS WRITTEN CONSENT OF SAMTEC, INC.



520 PARK EAST BLVD, NEW ALBANY, IN 47150  
PHONE: 812-944-6733 FAX: 812-948-5047  
e-Mail: info@SAMTEC.com code: 55322

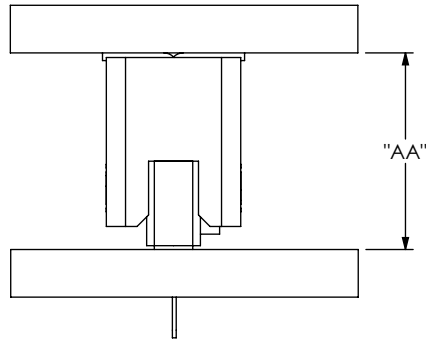


FIG 16  
SFM-S-TH MATED WITH TFM-S-SM

TABLE 16					
		SFM-S LEAD STYLE		WIPE	
		-01 / -03 / -L1 / -L3 / -T1		FULLY MATED	MIN @ "AA" MAX
TFM-S LEAD STYLE		"AA" FULLY MATED	"AA" MAX	FULLY MATED	MIN @ "AA" MAX
-02		.256 [6.50]	.256 [6.50]	.015 [0.38]	.015 [0.38]

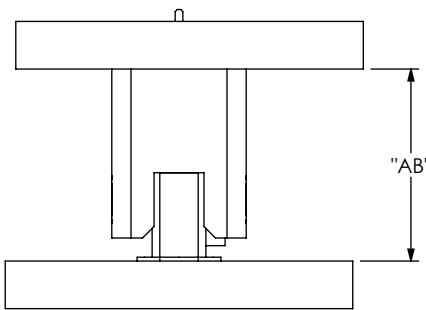


FIG 17  
SFM-S-TH MATED WITH TFM-S-TH

TABLE 17					
		SFM-S LEAD STYLE		WIPE	
		-01 / -03 / -L1 / -L3 / -T1		FULLY MATED	MIN @ "AB" MAX
TFM-S LEAD STYLE		"AB" FULLY MATED	"AB" MAX	FULLY MATED	MIN @ "AB" MAX
-01		.250 [6.35]	.250 [6.35]	.015 [0.38]	.015 [0.38]
-03		.250 [6.35]	.257 [6.53]	.022 [0.56]	.015 [0.38]

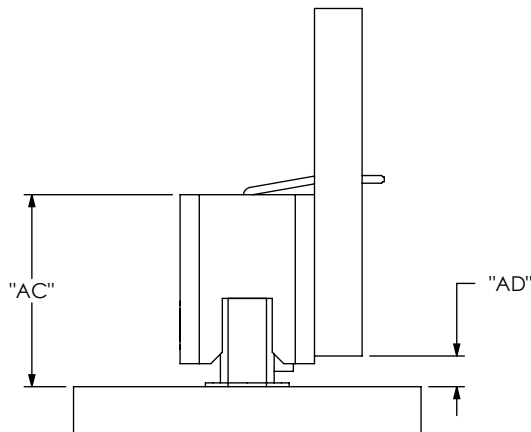


FIG 18  
SFM-S-TH MATED WITH TFM-S-RA

TABLE 18							
		SFM-S LEAD STYLE				WIPE	
		-01 / -03 / -L1 / -L3 / -T1				FULLY MATED	MIN @ "AC" MAX
TFM-S LEAD STYLE		"AC" FULLY MATED	"AC" MAX	"AD" FULLY MATED	"AD" MAX	FULLY MATED	MIN @ "AC" MAX
-01-RA		.250 [6.35]	.254 [6.45]	.040 [1.02]	.044 [1.12]	.019 [0.48]	.015 [0.38]

**PROPRIETARY NOTE**  
 THIS DOCUMENT CONTAINS CONFIDENTIAL AND PROPRIETARY INFORMATION AND ALL DESIGN, MANUFACTURING, REPRODUCTION, USE, PATENT RIGHTS AND SALES RIGHTS ARE EXPRESSLY RESERVED BY SAMTEC, INC. THIS DOCUMENT SHALL NOT BE DISCLOSED, IN WHOLE OR PART, TO ANY UNAUTHORIZED PERSON OR ENTITY NOR REPRODUCED, TRANSFERRED OR INCORPORATED IN ANY OTHER PROJECT IN ANY MANNER WITHOUT THE EXPRESS WRITTEN CONSENT OF SAMTEC, INC.



520 PARK EAST BLVD, NEW ALBANY, IN 47150  
 PHONE: 812-944-6733 FAX: 812-948-5047  
 e-Mail: info@SAMTEC.com code: 55322

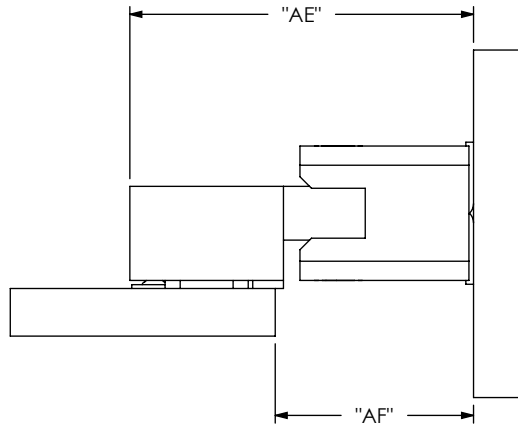


FIG 19  
SFM-SH MATED WITH TFM-S-SM

		TABLE 19 SFM-S LEAD STYLE -02-SH				WIPE	
TFM-S LEAD STYLE		"AE" FULLY MATED	"AE" MAX	"AF" FULLY MATED	"AF" MAX	FULLY MATED	MIN @ "AE" MAX
		-02	.448 [11.38]	.455 [11.56]	.258 [6.55]	.265 [6.73]	.022 [0.56]

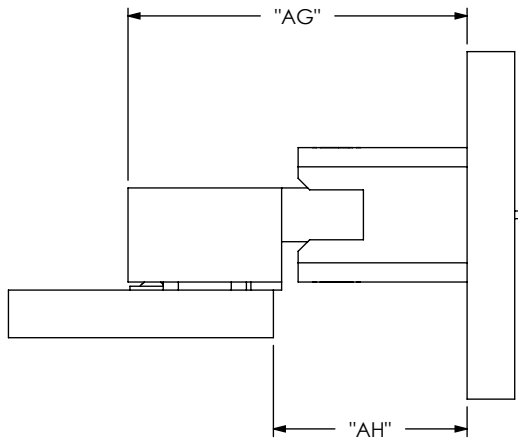


FIG 20  
SFM-SH MATED WITH TFM-S-TH

		TABLE 20 SFM-S LEAD STYLE -02-SH				WIPE	
TFM-S LEAD STYLE		"AG" FULLY MATED	"AG" MAX	"AH" FULLY MATED	"AH" MAX	FULLY MATED	MIN @ "AG" MAX
		-01	.442 [11.23]	.449 [11.40]	.252 [6.40]	.259 [6.58]	.022 [0.56]
-03	.442 [11.23]	.457 [11.61]	.252 [6.40]	.267 [6.78]	.030 [0.76]	.015 [0.38]	

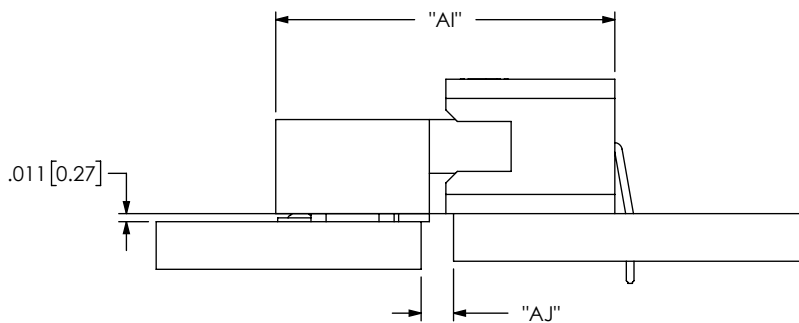


FIG 21  
SFM-SH MATED WITH TFM-S-RA

		TABLE 21 SFM-S LEAD STYLE -02-SH				WIPE	
TFM-S LEAD STYLE		"AI" FULLY MATED	"AI" MAX	"AJ" FULLY MATED	"AJ" MAX	FULLY MATED	MIN @ "AI" MAX
		-01-RA	.442 [11.23]	.455 [11.56]	.042 [1.07]	.055 [1.40]	.028 [0.71]

PROPRIETARY NOTE  
THIS DOCUMENT CONTAINS CONFIDENTIAL AND PROPRIETARY INFORMATION AND ALL DESIGN, MANUFACTURING, REPRODUCTION, USE, PATENT RIGHTS AND SALES RIGHTS ARE EXPRESSLY RESERVED BY SAMTEC, INC. THIS DOCUMENT SHALL NOT BE DISCLOSED, IN WHOLE OR PART, TO ANY UNAUTHORIZED PERSON OR ENTITY NOR REPRODUCED, TRANSFERRED OR INCORPORATED IN ANY OTHER PROJECT IN ANY MANNER WITHOUT THE EXPRESS WRITTEN CONSENT OF SAMTEC, INC.

520 PARK EAST BLVD, NEW ALBANY, IN 47150  
PHONE: 812-944-6733 FAX: 812-948-5047  
e-Mail: info@SAMTEC.com code: 55322

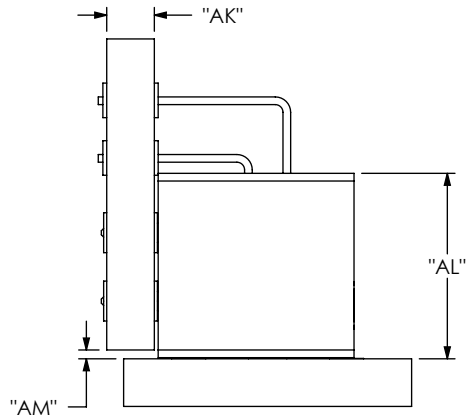


FIG 22  
SFM-D-SM MATED WITH TFM-D-REX

		TABLE 22						
		SFM-D LEAD STYLE					WIPE	
		-02 / -L2 / -T2					FULLY MATED	MIN @ "AL" MAX
"AK"	"AL" FULLY MATED	"AL" MAX	"AM" FULLY MATED	"AM" MAX				
TFM-D LEAD STYLE	-01-RE1	.062 [1.57]	.242 [6.13]	.257 [6.52]	.012 [0.29]	.027 [0.67]	.030 [0.76]	.015 [0.38]
	-01-RE2	.093 [2.36]	.242 [6.13]	.257 [6.52]	.012 [0.29]	.027 [0.67]	.030 [0.76]	.015 [0.38]

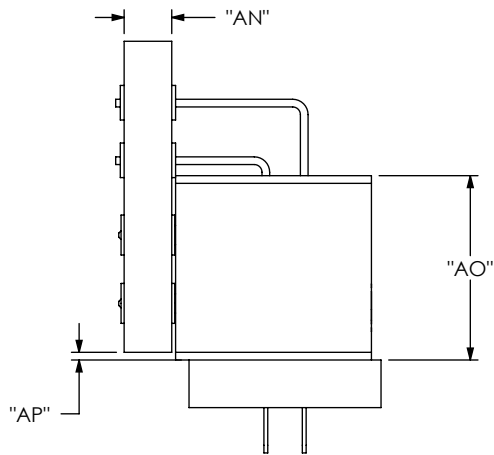


FIG 23  
SFM-D-TH MATED WITH TFM-D-REX

		TABLE 23						
		SFM-D LEAD STYLE					WIPE	
		-01 / -03 -L1 / -L3 / -T1					FULLY MATED	MIN @ "AO" MAX
"AN"	"AO" FULLY MATED	"AO" MAX	"AP" FULLY MATED	"AP" MAX				
TFM-D LEAD STYLE	-01-RE1	.062 [1.57]	.240 [6.10]	.251 [6.38]	.010 [0.25]	.021 [0.53]	.026 [0.66]	.015 [0.38]
	-01-RE2	.093 [2.36]	.240 [6.10]	.251 [6.38]	.010 [0.25]	.021 [0.53]	.026 [0.66]	.015 [0.38]

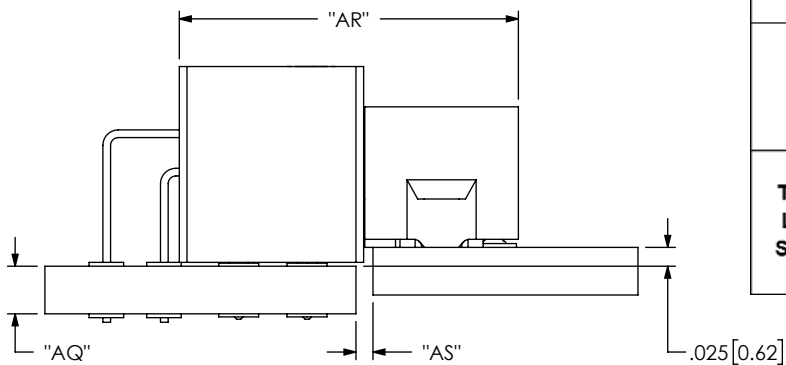


FIG 24  
SFM-D-DH MATED WITH TFM-D-REX

		TABLE 24						
		SFM-D LEAD STYLE					WIPE	
		-02-DH					FULLY MATED	MIN @ "AR" MAX
"AQ"	"AR" FULLY MATED	"AR" MAX	"AS" FULLY MATED	"AS" MAX				
TFM-D LEAD STYLE	-01-RE1	.062 [1.57]	.442 [11.23]	.457 [11.61]	.022 [0.56]	.037 [0.94]	.030 [0.76]	.015 [0.38]
	-01-RE2	.093 [2.36]	.442 [11.23]	.457 [11.61]	.022 [0.56]	.037 [0.94]	.030 [0.76]	.015 [0.38]

PROPRIETARY NOTICE  
THIS DOCUMENT CONTAINS CONFIDENTIAL AND PROPRIETARY INFORMATION AND ALL DESIGN, MANUFACTURING, REPRODUCTION, USE, PATENT RIGHTS AND SALES RIGHTS ARE EXPRESSLY RESERVED BY SAMTEC, INC. THIS DOCUMENT SHALL NOT BE DISCLOSED, IN WHOLE OR PART, TO ANY UNAUTHORIZED PERSON OR ENTITY NOR REPRODUCED, TRANSFERRED OR INCORPORATED IN ANY OTHER PROJECT IN ANY MANNER WITHOUT THE EXPRESS WRITTEN CONSENT OF SAMTEC, INC.



520 PARK EAST BLVD, NEW ALBANY, IN 47150  
PHONE: 812-944-6733 FAX: 812-948-5047  
e-Mail: info@SAMTEC.com code: 55322