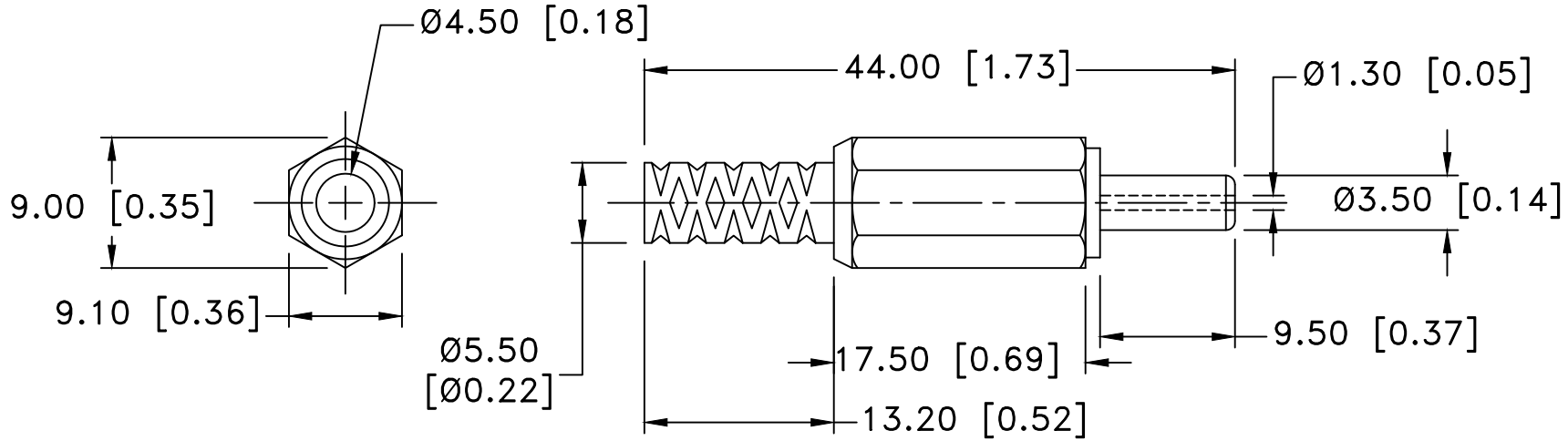


Date	SYM	REVISION RECORD	AUTH	DR.	CK.
12/12/14	A	REDRAWN IN AUTOCAD UPDATED TO ROHS 2 COMPLIANT	T.B.	B.S.	
10/05/18	B	DIM. 9.10 WAS 8.30 DIM. Ø4.50 WAS Ø4.00 DIM. 9.50 WAS 9.40 DIM. 44.00 WAS 41.00	T.B.	B.S.	




NOTES:

MAX. RATING: 12V 5A.

MATERIAL:

- 1) INSULATOR: ABS
- 2) PLUG: BRASS, NICKEL PLATED
- 3) COVER: PP

ROHS 2 COMPLIANT

Tolerance (Except as noted)	 <b>Memory Protection Devices, Inc</b> 200 Broad Hollow Road, Farmingdale, New York 11735		
decimal		Scale	Drawn By B.S.
±.5 (.020)			Approved By T.B.
Fractional	Title		
± .8 (.030)	DC PLUG- 1.3 X 3.5mm MOLDED WITH STRAIN RELIEF		
Angular	Date	Drawing Number	
± 3°	10/05/18	EP505-B	