

6

5

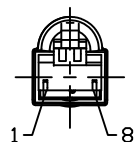
4

3

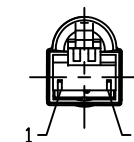
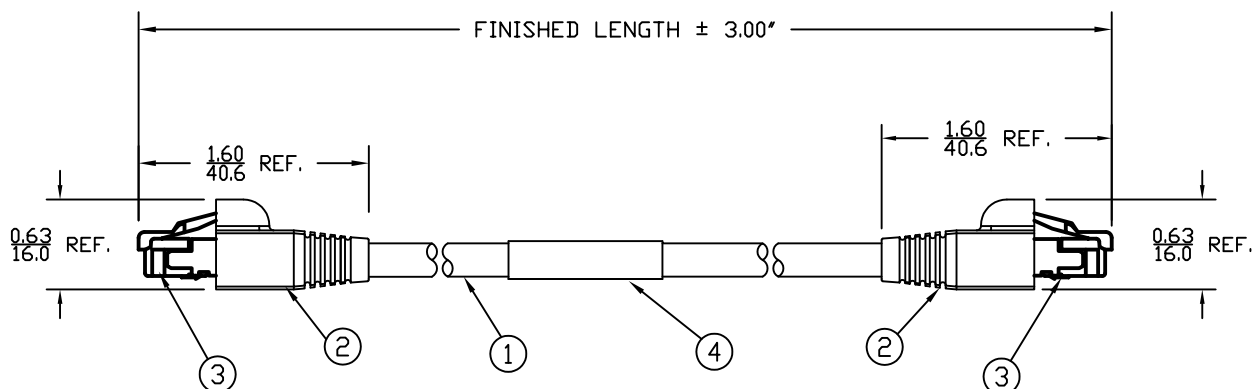
2

1

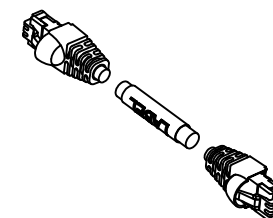
PART NUMBER	ENGINEERING NO.	LENGTH ± TOLERANCE
1300500107	ENP1335M010	3' 3" +2.19'/-0" [1M +55.6/-0 mm]



MALE - FACE VIEW



MALE - FACE VIEW



NOTES:

- 1) MATERIAL: SEE TABLE
- 2) FINISHES: SEE TABLE
- 3) CABLE: #26/8 SHIELDED TWISTED PAIR, PUR
- 4) ELECTRICAL DATA:
ACCORDING TO CAT5e ETHERNET STANDARD
MAX. VOLTAGE: 30V
MAX. CURRENT 1.5A
- 5) ENVIRONMENTAL:
PROTECTION IP67
TEMPERATURE RANGE: -20°C TO +80°C
- 6) WRAP LABEL IS MARKED WITH P/N & DATE CODE.
- 7) ASSEMBLY IS RoHS COMPLIANT.

ITEM	QTY.	DESCRIPTION	MATERIAL	FINISH
4	1	LABEL	PLASTIC FILM	BLACK/YELLOW
3	2	RJ45 PLUG	POLYCARBONATE	CLEAR
2	2	BOOT	PVC	BLACK
1	1	ETHERNET CABLE-CAT5E	PUR JACKET	BLACK

WIRE LIST

PIN #	COLOR
1	WHITE/BLUE
2	BLUE
3	WHITE/ORANGE
4	NOT USED
5	NOT USED
6	ORANGE
7	NOT USED
8	NOT USED
GND	DRAIN WIRE

SD RELEASE EC NO: WNA2010-0432 DRWN: TVICKERS 2010/01/14 CHKD: BWOODMA APPR: DTTITUS 2010/01/15	QUALITY SYMBOLS ▽=0 ▽/C=0	GENERAL TOLERANCES (UNLESS SPECIFIED)		DIMENSION STYLE IN/MM		SCALE 1:1	DESIGN UNITS INCH	THIRD ANGLE PROJECTION	
		4 PLACES	±---	±---	DRAWN BY	DATE	TITLE		
		3 PLACES	±---	±.005	CHECKED BY	DATE	ETHERNET MMJ RJ45/RJ45 I O BASE T SHIELD ASSEM PROPLEX STRANDED CABLE		
		2 PLACES	±0.13	±.010	BWOODMAN 2010/01/13		MOLEX INCORPORATED		
1 PLACE	±0.25	±.020	APPROVED BY		DATE	DOCUMENT NO.			
ANGULAR ±1/2°		DRAFT WHERE APPLICABLE MUST REMAIN WITHIN DIMENSIONS		DTITUS 2010/01/15		SD-130050-014			
SIZE A		SEE CHART		THIS DRAWING CONTAINS INFORMATION THAT IS PROPRIETARY TO MOLEX INCORPORATED AND SHOULD NOT BE USED WITHOUT WRITTEN PERMISSION			SHEET NO. 1 OF 1		

6

5

4

3

2

1