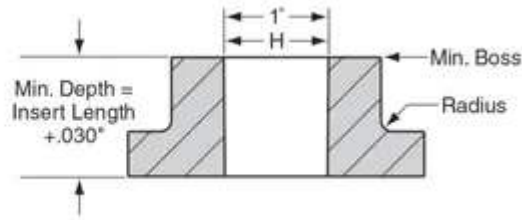
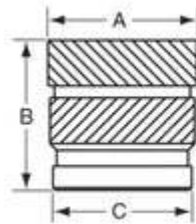


# 632X281C



A	0.218 in
B	0.281 in
Boss Size	0.376 in
Brand	RAF
C	0.185 in
Finish	None
Hole Size	0.188 in
Material	Brass
Measurement Units	Standard
Series	C
Thread Size	6-32

## PRODUCT OPTIONS

<b>Finish</b>
None
Black Oxide (25)
Bright Dip (13)
Bright Tin over Copper Flash (14)
Cad Plate - Clear Chromate (2)
Cad Plate - Clear Chromate - Commercial (1)

Cad Plate - Yellow Chromate (3)
Chrome - Bright (10)
Chrome - Satin (11)
Chrome over Nickel (4)
Electro Tin (16)
Electro Tin - Nickel Undercoat (44)
Electro Tin - Solder 60/40 (27)
Hot Tin Dip (15)
Nickel (5)
Nickel - Ductile (37)
Zinc - Black (42)
Zinc - Blue (43)
Zinc - Clear Chromate (12)
Zinc - Yellow Chromate (28)