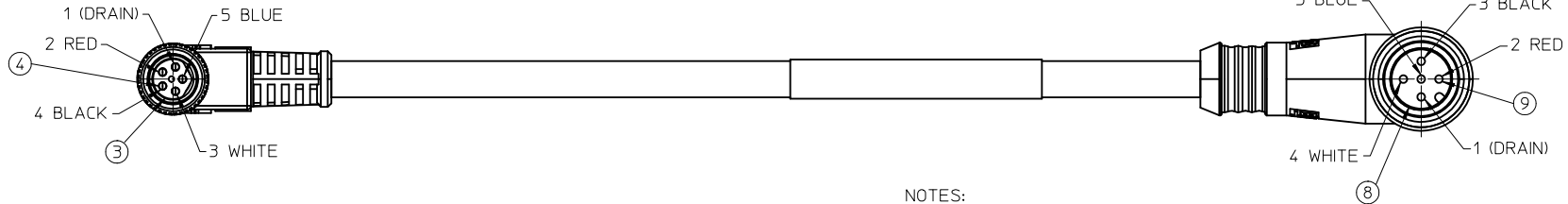
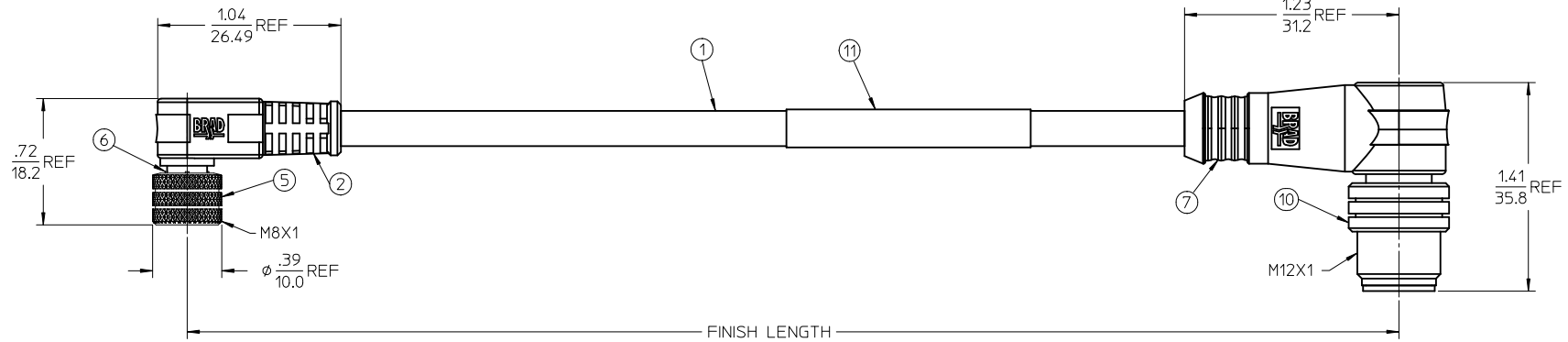
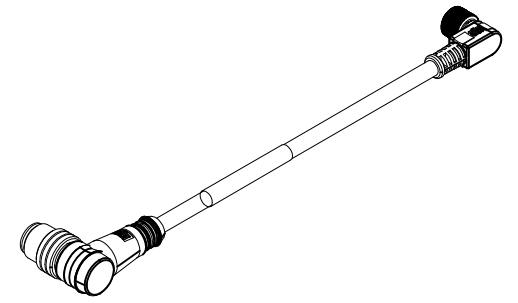


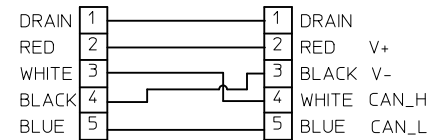
13	12	11	10
MATERIAL	ENG-NUMBER	LENGTH	LENGTH TOL.
1300300022	485033D12M010	1M (3'-4")	+58.7MM -0(+2.31" -0")



NOTES:

- 1.) MATERIAL: SEE TABLE
- 2.) FINISHES: SEE TABLE
- 3.) ELECTRICAL: 60VAC 75VDC, 1.68 AMPS
- 4.) CABLE:
TWO SHIELDED PAIRS
26AWG/ 4C 300VDC
-20 TO +70°C @ 1.68 AMPS
- 5.) IP67
- 6.) ASSEMBLY IS RoHS COMPLIANT

WIRING CONNECTION



11	1	MFG LABEL	PLASTIC FILM	BLACK/YELLOW
10	1	MALE COUPLING NUT	BRASS	NICKEL PLATED
9	5	MALE CONTACT	Cu ALLOY	GOLD PLATED
8	1	MC 5 POLE MALE INSERT	PUR	BLACK
7	1	OVERMOLD BODY	TPE	GRAY
6	1	O-RING	VITON	RED
5	1	FEMALE COUPLING NUT	BRASS	NICKEL PLATED
4	5	FEMALE CONTACT	Cu ALLOY	GOLD PLATED
3	1	MIC 5 POLE FEM. INSERT	PUR	BLACK
2	1	OVERMOLD BODY	TPE	GRAY
1	1	CABLE, 4P, 26 AWG	PVC JACKET	GRAY
ITEM	QTY	DESCRIPTION	MATERIAL	FINISH

CREATE DOC. EC NO: WNA2010-0452 DRWN:BRUPERT 2010/01/25 CHKD:B.WOODMAN 2010/01/29 APPR:JFMURPHY 2010/01/29	QUALITY SYMBOLS	DESCRIPTION
	▽=0	
	▽=0	
	REV	

GENERAL TOLERANCES (UNLESS SPECIFIED)
mm INCH
4 PLACES ± --- ± ---
3 PLACES ± --- ± ---
2 PLACES ± --- ± ---
1 PLACE ± --- ± ---
ANGULAR ±1/2°
DRAFT WHERE APPLICABLE MUST REMAIN WITHIN DIMENSIONS

DIMENSION STYLE	SCALE	DESIGN UNITS	THIRD ANGLE PROJECTION
IN/MM	2:1	INCH	
DRAWN BY	DATE	TITLE	
B.RUPERT	01/15/2010	MIC 90D 5P MALE TO NC 90D 5P FEMALE DEVICENET	
CHECKED BY	DATE	MOLEX INCORPORATED	
B.WOODMAN	01/15/2010	SD-130030-022	
APPROVED BY	DATE	SHEET NO.	
JFMURPHY	2010/01/29	1 OF 1	
MATERIAL NO.	DOCUMENT NO.	THIS DRAWING CONTAINS INFORMATION THAT IS PROPRIETARY TO MOLEX INCORPORATED AND SHOULD NOT BE USED WITHOUT WRITTEN PERMISSION	
SEE CHART			