



**MICRO SWITCH**

FREEPORT, ILLINOIS, U.S.A.  
A DIVISION OF HONEYWELL

FED. MFG. CODE 91929

# SWITCH-BASIC

CATALOG LISTING

## YZ-2RW812-A2

### AYF2000

YZ-2RW812-A2  
PAGE 1 OF 1

**M**

DRAWING NUMBER

ISSUE 11

REPLACES

RELEASE NO.

CHECK

09JAN06

RJ

CHECK

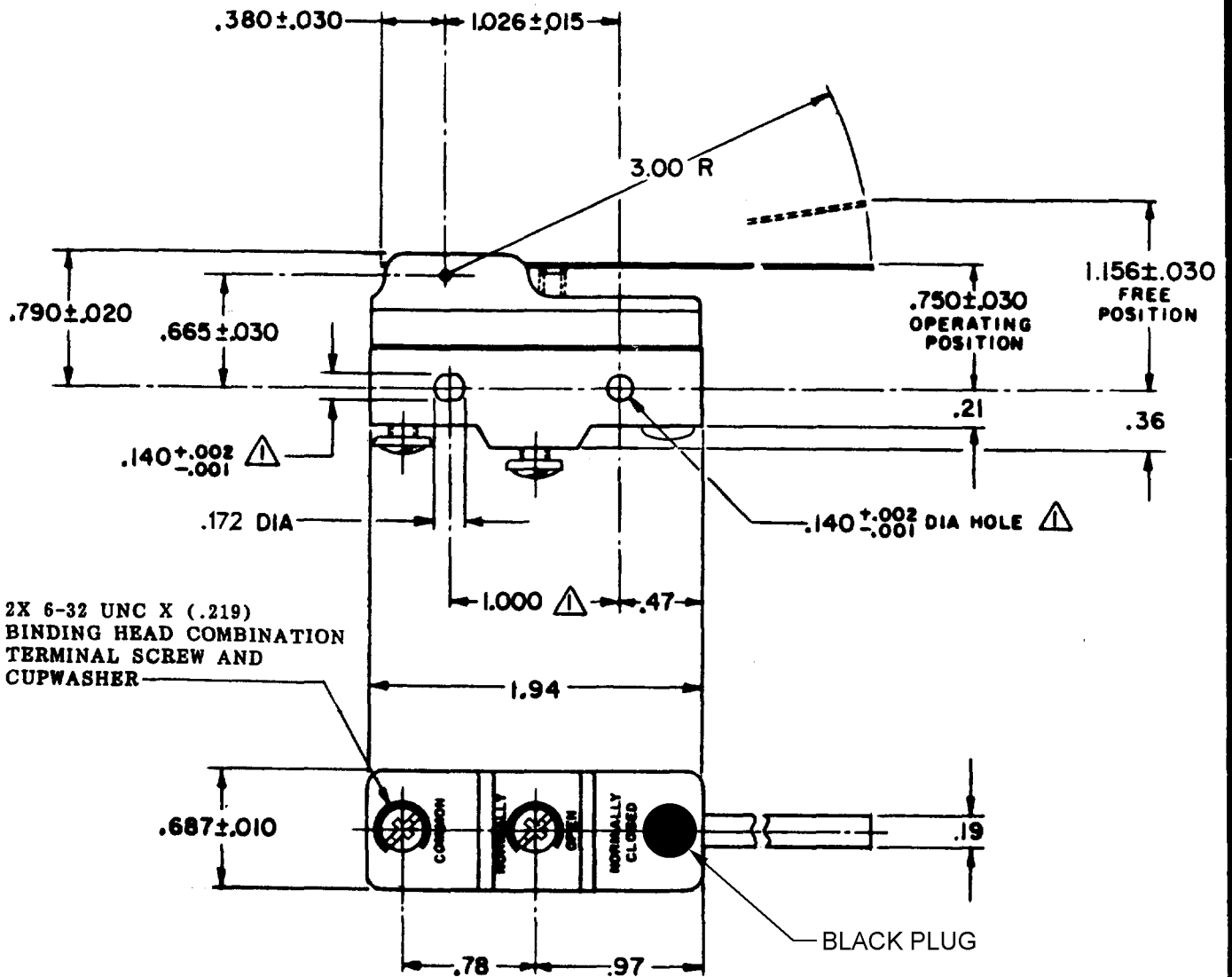
03

RAW

CHECK

63

RAW



2X 6-32 UNC X (.219)  
BINDING HEAD COMBINATION  
TERMINAL SCREW AND  
CUPWASHER

BLACK PLUG

**NOTE**  
MOUNTING HOLES WILL ACCEPT PINS OR SCREWS  
OF .139 MAX DIA ON 1.000±.002 CENTERS

THIS DRAWING COVERS A PROPRIETARY ITEM AND IS THE PROPERTY OF MICRO SWITCH, A DIVISION OF MINNEAPOLIS-HONEYWELL REGULATOR CO. THIS DRAWING IS NOT TO BE COPIED OR USED WITHOUT THE APPROVAL OF MICRO SWITCH.

#### CHARACTERISTICS

OPERATING FORCE-----3/4 - 2 1/4 OZ

RELEASE FORCE-----1/4 OZ MIN

DIFFERENTIAL TRAVEL-----.009-.060

OVERTRAVEL-----.266 MIN

#### ELECTRICAL DATA

CONTACT ARRANGEMENT

S P N O

-L95- 1/2 A-125, 250, OR 400 VAC  
1/2 A-125 VDC, 1/4 A-250 VDC  
1/8 HP-125 VAC; 1/4 HP-250 VAC

-L288-  
-L306-  
-L315-



16A 250V ~ T85 5E4

#### SCALE FULL

DO NOT SCALE PRINT

UNLESS OTHERWISE NOTED  
DIMENSIONS ARE IN INCHES

**TOLERANCES ARE:**

ONE PLACE (.0) ±.030  
TWO PLACE (.00) ±.015  
THREE PLACE (.000) ±.005  
ANGLES ±

WEIGHT .073 LB

RASTER

DRAWN

LEB 3 OCT 63 CHECK

#### REVISIONS

A	CO17262	LEB	06 OCT 63
B	73287-J	JAL	22 NOV 63
C	77588	KDR	29 MAR 64
D	CO93346	DLT	22 SEP 68
E	0000677	JLH	25 JUL 03
F	0017586	TSG	09 JAN 06