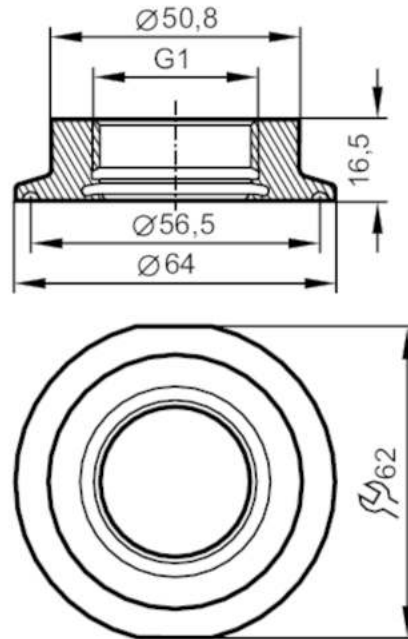




Process adapter Tri-Clamp

ADAPT IFM-CLAMP ISO2852 2"

CRN EC 1935/2004 EHEDG Tested 

Application

Pressure rating	[bar]	16
-----------------	-------	----

Tests / approvals

Pressure Equipment Directive	A possible classification to PED depends on the application and has to be carried out by the user / operator.
Pressure Equipment Directive EAC	The adapter is intended for use in devices, machines and installations that do not fall under the categories of the technical rule TR CU 032/2013.
Safety instructions	The compatibility between medium and product material has to be checked in all applications.

Mechanical data

Weight	[g]	227.5
Materials (wetted parts)	stainless steel (1.4435 / 316L) ; surface characteristics : Ra<0,4 / Rz 4	
Sensor connection	G 1 Aseptoflex Vario	
Process connection	Clamp DN50 (2") DIN 32676 (ISO 2852)	
Sealing	Gasket	
Hygienic equipment class to DIN 11866	H4	

Accessories

Items supplied	O-ring: 1 x 24 x 2, EPDM, FDA compliant, E30054
Accessories (optional)	O-ring: 1 x 24 x 2, FKM, FDA compliant, E30123
	sealing ring: 1, PEEK, FDA compliant, E30124

Remarks

Pack quantity	1 pcs.
---------------	--------