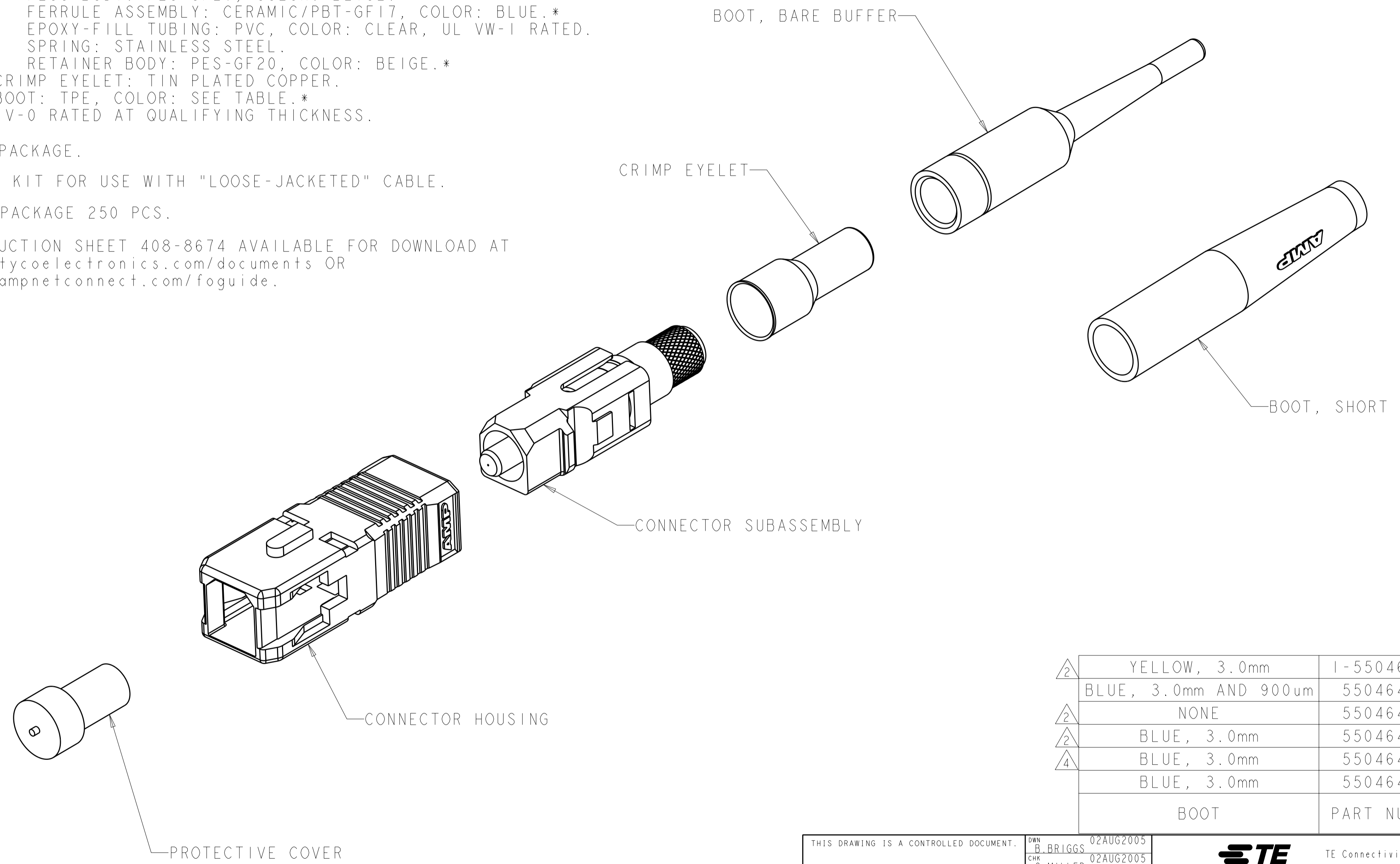


THIS DRAWING IS UNPUBLISHED. RELEASED FOR PUBLICATION 20  
 © COPYRIGHT 20 ALL RIGHTS RESERVED.

LOC	DIST	REVISIONS			
P	LTR	DESCRIPTION	DATE	DWN	APVD
CE	00	B2	REVISED PER ECO-11-005139	27APR2011	RK HMR

1 MATERIAL:  
 PROTECTIVE COVER: LDPE, BLACK, NON-FR.  
 CONNECTOR HOUSING: PBT-GF17, COLOR: BLUE.\*  
 CONNECTOR SUBASSEMBLY:  
 PLUG BODY: PES-GF20, COLOR: BEIGE.\*  
 FERRULE ASSEMBLY: CERAMIC/PBT-GF17, COLOR: BLUE.\*  
 EPOXY-FILL TUBING: PVC, COLOR: CLEAR, UL VW-1 RATED.  
 SPRING: STAINLESS STEEL.  
 RETAINER BODY: PES-GF20, COLOR: BEIGE.\*  
 CRIMP EYELET: TIN PLATED COPPER.  
 BOOT: TPE, COLOR: SEE TABLE.\*  
 \*UL94 V-0 RATED AT QUALIFYING THICKNESS.

2 BULK PACKAGE.  
 3. 3.0mm KIT FOR USE WITH "LOOSE-JACKETED" CABLE.  
 4 BULK PACKAGE 250 PCS.  
 5. INSTRUCTION SHEET 408-8674 AVAILABLE FOR DOWNLOAD AT  
[www.tycoelectronics.com/documents](http://www.tycoelectronics.com/documents) OR  
[www.ampnetconnect.com/foguide](http://www.ampnetconnect.com/foguide).



2	YELLOW, 3.0mm	1-5504646-2
	BLUE, 3.0mm AND 900um	5504646-7
2	NONE	5504646-5
2	BLUE, 3.0mm	5504646-3
4	BLUE, 3.0mm	5504646-2
	BLUE, 3.0mm	5504646-1
	BOOT	PART NUMBER

THIS DRAWING IS A CONTROLLED DOCUMENT.

DWN B. BRIGGS 02AUG2005	TE Connectivity
CHK S. MILLER 02AUG2005	
APVD S. BUCHTER 02AUG2005	
PRODUCT SPEC	
APPLICATION SPEC	NAME AMP SC, SINGLEMODE CONNECTOR KIT, 900um AND 3.0mm
WEIGHT	SIZE A200779
CUSTOMER DRAWING	CAGE CODE C-5504646
	DRAWING NO 5504646
	RESTRICTED TO
	SCALE 4:1
	SHEET 1 OF 1
	REV B2