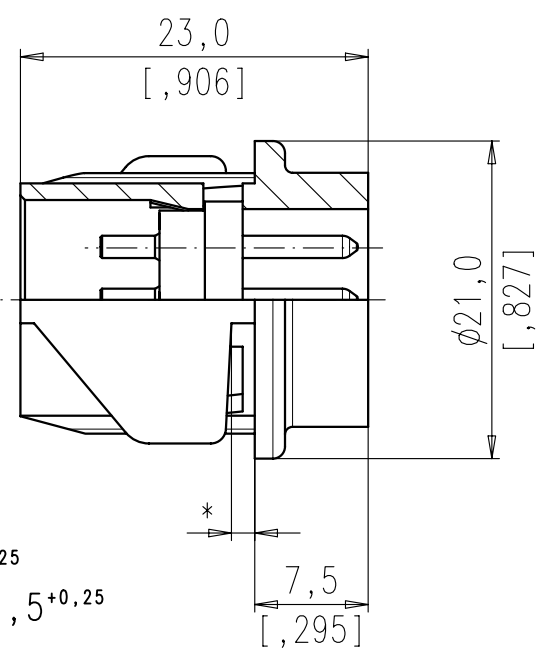
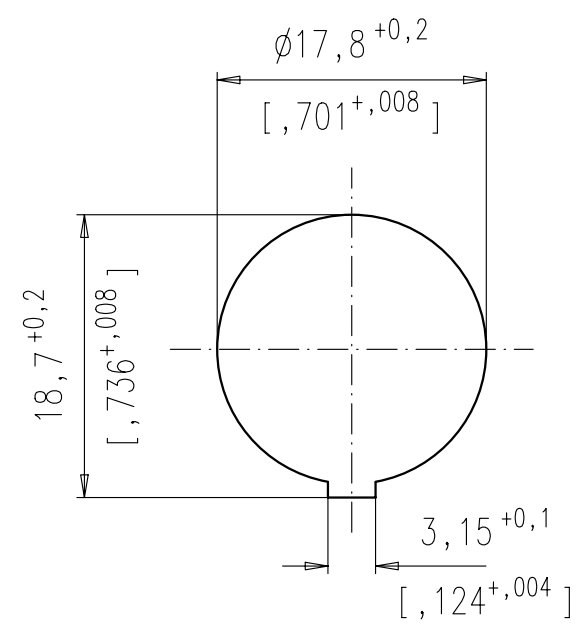


Copying of this document and giving it to others and the use or communication of the contents thereof, are forbidden without express authority. Offenders are liable to the payment of damages. All rights are reserved in the event of the grant of a patent or the registration of the utility model or design.



\* max. Wandstärke 1,5<sup>+0,25</sup>  
 max. panel thickness 1,5<sup>+0,25</sup>

Montageausschnitt  
Panel Cutout



|  |                                     |   |               |               |                  |                  |                 |                  |                                 |        |        |     |
|--|-------------------------------------|---|---------------|---------------|------------------|------------------|-----------------|------------------|---------------------------------|--------|--------|-----|
| Polzahl<br>number of contacts                                | Norm<br>standard                    | 3   | 4             | 5             | 5                | 6                | 7               | 7                | 8                               | 12     | 14     |     |
| Kontaktanordnung nach DIN<br>contact arrangement acc. to DIN |                                     | 41524<br>60130-9  | -<br>60130-9  | -<br>-        | 41524<br>60130-9 | 45322<br>60130-9 | -<br>-          | 45329<br>60130-9 | 45326<br>60130-9                | -<br>- | -<br>- |     |
| Kontaktanordnung nach IEC<br>contact arrangement acc. to IEC |                                     |   |               |               |                  |                  |                 |                  |                                 |        |        |     |
| Bemessungsspannung<br>rated voltage                          | IEC 60664-1                         | 300V =  |               | 100V =        |                  | 300V =           |                 | 100V =           |                                 | 150V = |        |     |
| Bemessungsspannung<br>rated voltage                          | UL 1977                             | 250V  |               |               |                  |                  |                 |                  |                                 |        |        | 60V |
| Bemessungs-Stoßspannung<br>rated impulse withstand voltage   | IEC 60664-1                         | 1500V   |               | 1200V         |                  | 1500V            |                 | 1200V            |                                 |        |        |     |
| Verschmutzungsgrad<br>pollution degree                       | IEC 60664-1                         | 1   |               |               |                  |                  |                 |                  |                                 |        |        |     |
| Überspannungskategorie<br>installation category              | IEC 60664-1                         | I   |               |               |                  |                  |                 |                  |                                 |        |        |     |
| Isolierstoffgruppe<br>insulation group                       | IEC 60664-1                         | II, 400 ≤ CTI < 600   |               |               |                  |                  |                 |                  |                                 |        |        |     |
| Strombelastbarkeit<br>current rating                         | IEC 60512-5-2<br>Test 5b<br>UL 1977 | 5A / +40°C / +104°F   |               |               |                  |                  |                 |                  | 3A / +40°C / +104°F             |        |        |     |
| Isolationswiderstand<br>insulation resistance                | IEC 60512-3-1<br>Test 3a            | >10 <sup>10</sup> Ω   |               |               |                  |                  |                 |                  |                                 |        |        |     |
| Durchgangswiderstand<br>contact resistance                   | IEC 60512-2-1<br>Test 2a            | < 5m Ω  |               |               |                  |                  |                 |                  |                                 |        |        |     |
| Prüfklasse<br>climatic category                              | IEC 60068-1                         | 40 / 100 / 56   |               |               |                  |                  |                 |                  |                                 |        |        |     |
| Temperaturbereich<br>temperatur range                        | IEC 60068-1                         | -40°C ... +100°C<br>-40°F ... +212°F  |               |               |                  |                  |                 |                  |                                 |        |        |     |
| IP-Schutzart<br>IP-degree                                    | IEC 60529                           | IP 40   |               |               |                  |                  |                 |                  |                                 |        |        |     |
| Steck- und Ziehkraft<br>Insertion and withdrawal forces      | IEC 60512-13-2<br>Test 13b          | 25N<br>90.oz  | 30N<br>110.oz | 35N<br>125.oz | 50N<br>180.oz    | 55N<br>200.oz    | 60N<br>220.oz   | 50N<br>180.oz    |                                 |        |        |     |
| Mechanische Lebensdauer<br>mechanical operation              | IEC 60512-9-1<br>Test 9a            | gold/gold ≥ 1000 Steckzyklen/mating cycles  |               |               |                  |                  |                 |                  |                                 |        |        |     |
| Werkstoff Gehäuse<br>housing material                        |                                     | Überwurfmutter Messing, Zugentlastung Zink-Druckguß, Oberfläche vernickelt<br>coupling ring brass, strain relief, die cast, nickel plated |               |               |                  |                  |                 |                  |                                 |        |        |     |
| Werkstoff Kontaktträger<br>dielectric material               |                                     | Thermoplast<br>thermoplastic  |               |               |                  |                  |                 |                  |                                 |        |        |     |
| Kontaktoberfläche<br>contact plating                         |                                     | vergoldet *<br>gold plated  |               |               |                  |                  |                 |                  |                                 |        |        |     |
| Anschlusstechnik<br>termination technique                    |                                     | löten<br>solder   |               |               |                  |                  | löten<br>solder |                  |                                 |        |        |     |
| Anschlussquerschnitt<br>wire gauge                           |                                     | löten/solder ≤ 0,5 mm <sup>2</sup> / 20AWG  |               |               |                  |                  |                 |                  | ≤ 0,25 mm <sup>2</sup> / 24 AWG |        |        |     |
| Brennbarkeit<br>flammability                                 |                                     | UL 94 V0  |               |               |                  |                  |                 |                  |                                 |        |        |     |
| Verriegelung<br>locking system                               |                                     | Bajonett<br>bayonet   |               |               |                  |                  |                 |                  |                                 |        |        |     |

|                  |                                  |                                 |
|------------------|----------------------------------|---------------------------------|
|                  | 14                               | T 3646 518                      |
|                  | 12                               | T 3626 518                      |
|                  | 8<br>IEC                         | T 3526 518                      |
|                  | 7<br>IEC                         | T 3446 518                      |
|                  | 7                                | T 3436 518                      |
|                  | 6                                | T 3426 518                      |
|                  | 5                                | T 3376 518                      |
|                  | 5<br>IEC                         | T 3396 518                      |
|                  | 4                                | T 3326 518                      |
|                  | 3                                | T 3276 518                      |
| SYMBOL<br>symbol | POLZAHL<br>number of<br>contacts | TYP-NUMMER-AU<br>type-number-AU |

Diese Steckverbinder dürfen betriebsmäßig nicht unter Spannung betätigt werden. Metallene Gehäuseteile sind sicher mit dem Schutzleitersystem zu verbinden.  
 Do not connect or disconnect under load. Metal housing parts shall be securely incorporated to protected ground.

\* Hinweis für vergoldete Anschlüsse:  
 Zur Vermeidung von spröden intermetallischen Verbindungen müssen vergoldete Anschlüsse vor dem eigentlichen Lötvorgang verzinnt werden.

Remark for gold plated contacts:  
 In order to avoid brittle inter-metallic connections, gold-plated terminals have to be tin-plated in the solder area.

|                                 |                      |                       |            |                                  |     |             |  |
|---------------------------------|----------------------|-----------------------|------------|----------------------------------|-----|-------------|--|
| Gewicht (errechnet)/ Calc WT:   | 9                    | Zul. Abw./Tolerances: |            | Maßstab/Scale                    | 2:1 | A3          |  |
| Prüfmaß/Test dimension          |                      |                       |            | CUSTOMER DRAWING                 |     |             |  |
| Teileindex<br>Part index number |                      |                       |            | Gerätestecker<br>Male receptacle |     |             |  |
|                                 |                      | 08                    | Datum/Date | Name                             |     |             |  |
|                                 |                      | Gez.                  | 15.07.     | Cionvica                         |     |             |  |
|                                 |                      | Drawn                 |            |                                  |     |             |  |
|                                 |                      | Gep.                  |            |                                  |     |             |  |
|                                 |                      | Checked               |            |                                  |     |             |  |
|                                 |                      | Amphenol-Tuchel       |            | WB T 3XX6 518                    |     | Blatt/Sheet |  |
|                                 |                      | Electronics GmbH      |            | M                                |     | 1           |  |
| 01                              | 200700144            | 15.07.08              | CI         | Ers. f./Similar to:              |     | 1 Bl.       |  |
| Index                           | Änderung/Description | Datum/Date            | Name       |                                  |     |             |  |