



CS-044 3.2x2.5mm Crystal Resonator

CONNOR WINFIELD



2111 Comprehensive Drive

Aurora, Illinois 60505

Phone: 630-851-4722

Fax: 630-851-5040

www.conwin.com

Description:

The Connor-Winfield model CS-044 is a 54MHz fundamental mode, AT-cut crystal in a 3.2x2.5mm surface mount package. The CS-044 is designed to be used as a reference crystal in synthesizer applications.

Features:

- Frequency: 54.0 MHz
- Frequency Calibration: +/-15 ppm
- Frequency Stability: +/-25 ppm
- Temperature Range: -40 to 85°C
- Surface Mount Package
- Tape and Reel Packaging
- RoHS Compliant / Lead Free ✓RoHS

Electrical Specifications

Parameter	Minimum	Nominal	Maximum	Units	Notes
Output Frequency (Fo)		54.0		MHz	
Frequency Calibration (@25°C)	-15		15	ppm	
Frequency Stability vs. Change in Temperature (Referenced to the frequency measured @25°C)	-25		25	ppm	
Operating Temperature Range:	-40		85	°C	
Operation Mode		Fundamental			
Cut		AT Cut			
Aging	-1		1	ppm/Year	
Shunt Capacitance: (Co)			2.0	pF	
Load Capacitance: (CL)		8		pF	
Equivalent Series Resistance @ 25 °C			20	Ohms	
Drive Level		10	200	uW	
Insulation Resistance		500		Mohm	@ 100 Vdc
Storage Temperature:	-40		95	°C	

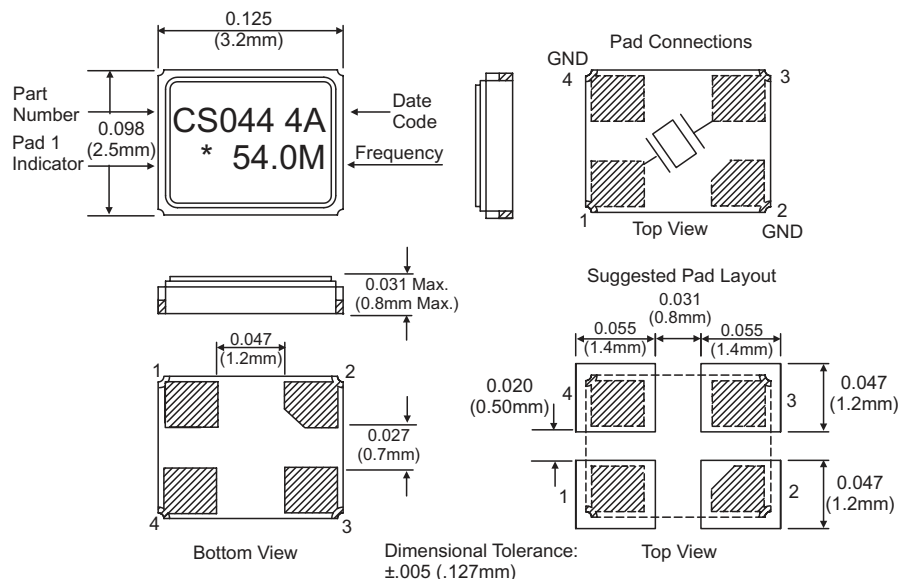
Package Characteristics

Package	Hermetically sealed ceramic 3.2x2.5mm SMD Package.
Leakage	0.01ppm atm, cc/sec. maximum

Ordering Information

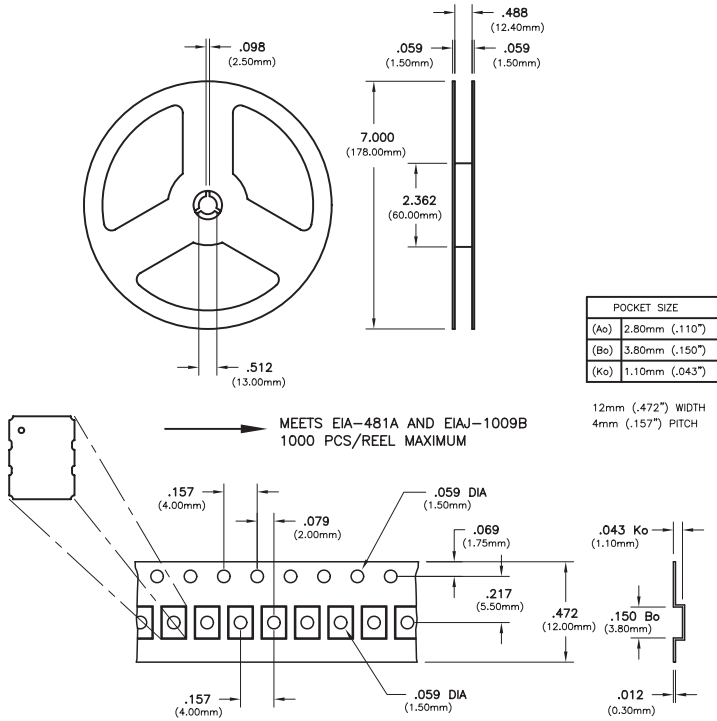
CS-044-054.0M

Package Outline





Tape and Reel Information



Date Code Information

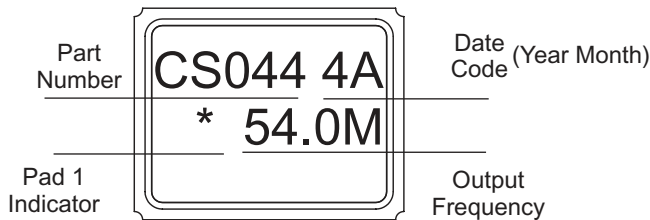
2 Character Date Code

Year Code	Month Code
3 = 2013	A = January
4 = 2014	B = February
5 = 2015	C = March
6 = 2016	D = April
7 = 2017	E = May
8 = 2018	F = June
9 = 2019	G = July
0 = 2020	H = August
1 = 2021	J = September
2 = 2022	K = October
	M = November
	N = December

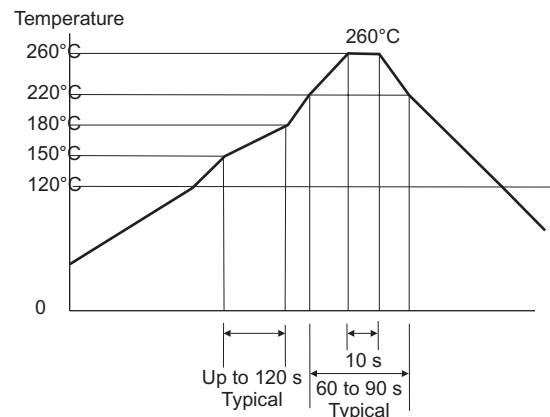
Date Code Example: 9G

9 = 2019, G = July

Marking Information



Solder Profile



Meets IPC/JEDEC J-STD-020C

Revision History

Revision	Date	Revision.
00	01/14/14	New Release
01	07/08/14	Update to Electrical Specs
02	08/03/15	Update to Electrical Specs and Digi-Key
03	07/23/19	Updated Tape and Reel dimensions

Bulletin	Xt390
Page	2 of 2
Revision	03
Date	23 July 2019