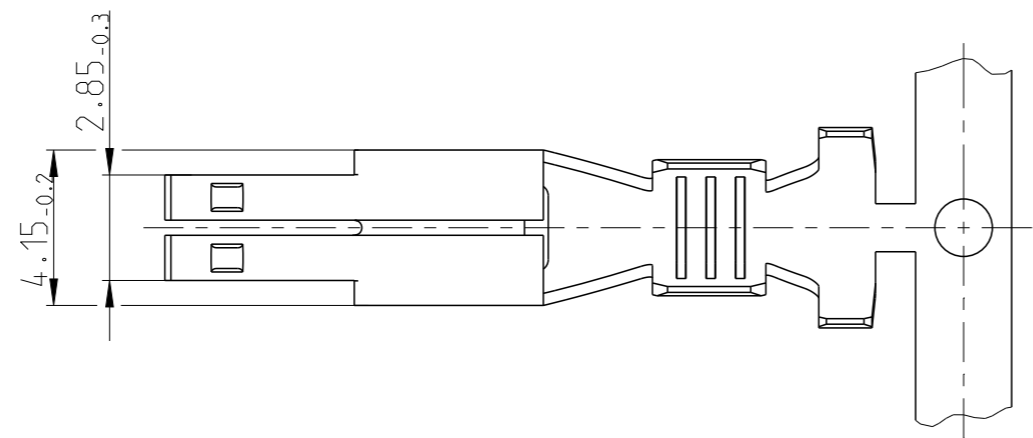
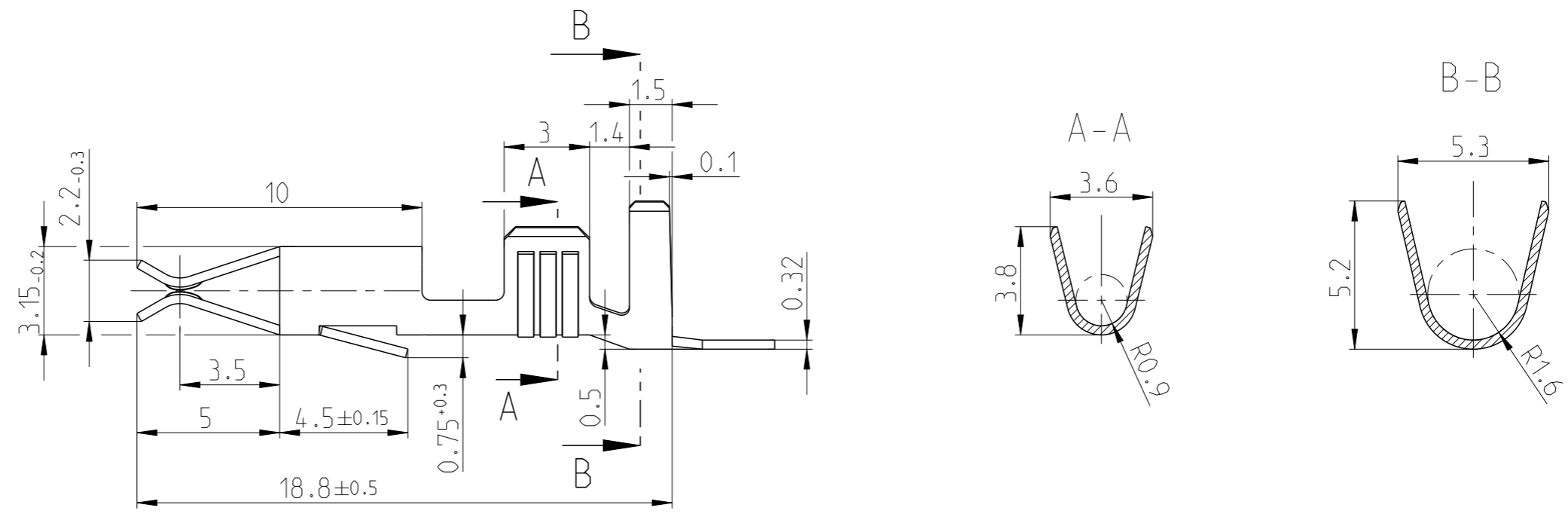


LOC	DIST	REVISIONS			
P	LTR	DESCRIPTION	DATE	DWN	APVD
A1	-				
	A	Zeichnungskorrektur	30JAN1985	Widd	-
	B	New CAD drawing created.	12JUN2013	Kirs.	Eder
	B1	E-22-140086	23MAY2022	SH	SK



NOTES
 Bemerkungen
 1 CRIMP PREFORMED
 Crimp vorgeformt

CONDUCTOR CROSS-SECTION IN mm ² Leitungsquerschnitt in mm ²		0.50	0.75	1.00	1.50	2.00	2.50	3.00	4.00	6.00
SINGLE CONNECTION Einzelanschlag										
0.50		X	X	X						
0.75	X	X	X	X						
1.00	X	X	X	X						
1.50	X	X	X	X						
2.00										
2.50	X									
3.00										
4.00										
6.00										

WIRE SIZE RANGE: >1.0-2.5mm²
 Drahtgrossenbereich: >1.0-2.5mm²
 CRIMPING CONDUCTOR: FLK-WIRE
 CONDUCTOR: F-CRIMP
 INSULATION: F-CRIMP
 angeschlagener Leiter: FLK-Leitung
 Leiter: F-Crimp
 Isolation: F-Crimp

B1 DISCONTINUED

927878-4	PRE SILVER	CuZn30	927877-4	B
927878-2	PRE TIN	CuSn4	927877-2	B
927878-1	PRE TIN	CuZn30	927877-1	B
LOOSE PIECE 1	FINISH	MATERIAL	STRIP PART	REV

THIS DRAWING IS A CONTROLLED DOCUMENT.

DIMENSIONS: mm	TOLERANCES UNLESS OTHERWISE SPECIFIED: ±0.2	DWN J. W idder 26SEP1984	TE Connectivity	
	0 PLC 1 PLC 2 PLC 3 PLC 4 PLC ANGLES FINISH	CHK Herth 08OCT1984		
MATERIAL		APVD C. Goepfel 12JUN2013	NAME JUNIOR-TIMER CONTACT Junior-Timer Kontakt	
		PRODUCT SPEC	SIZE A3	CAGE CODE 00779
		APPLICATION SPEC	DRAWING NO G-927877	RESTRICTED TO
		WEIGHT	SCALE 5:1 SHEET 1 OF 1 REV B1	

Customer Drawing