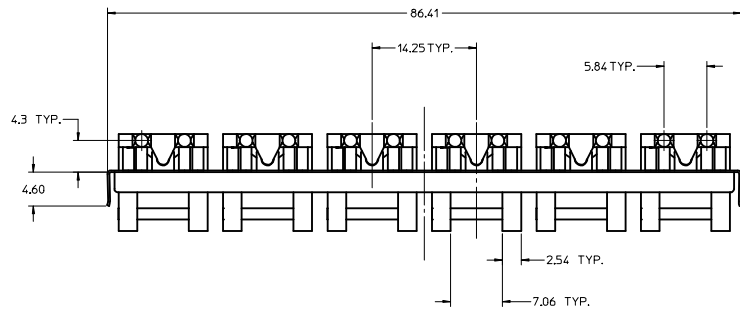
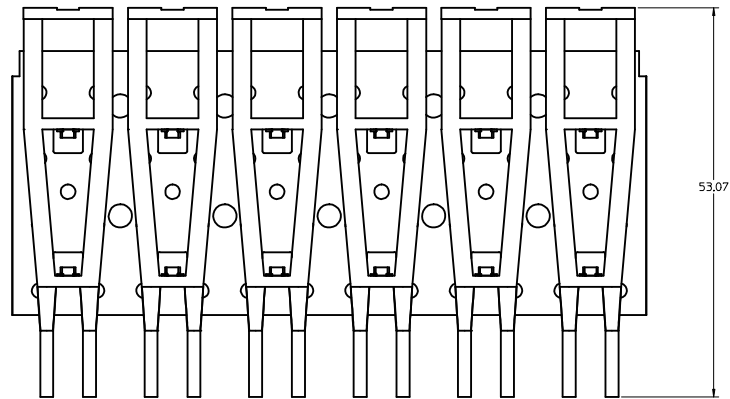
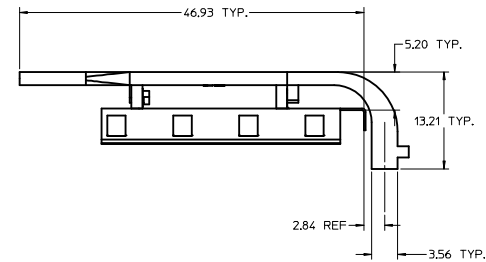
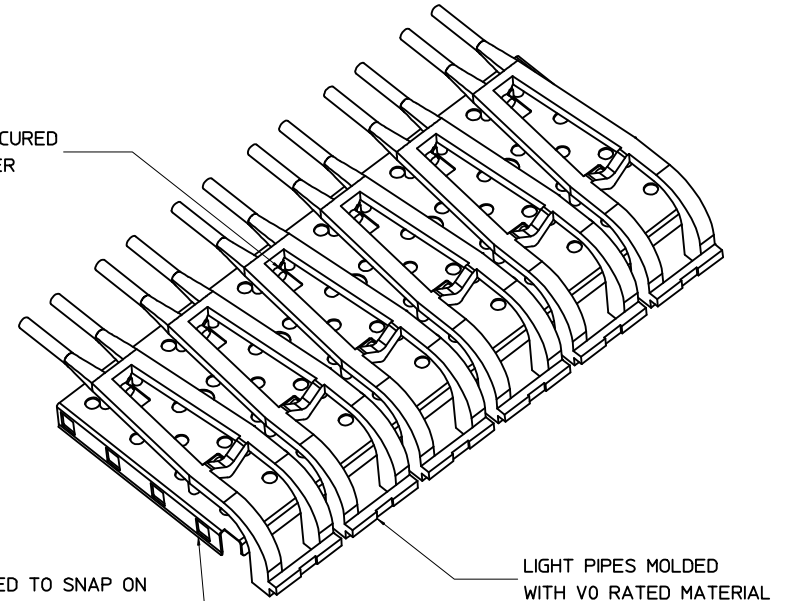


3D MODEL: EM-74748-001-ASSY



LIGHT PIPES SECURED TO METAL COVER

COVER DESIGNED TO SNAP ON THE SFP CAGE ASSEMBLY



NOTE:

1. MATERIAL:

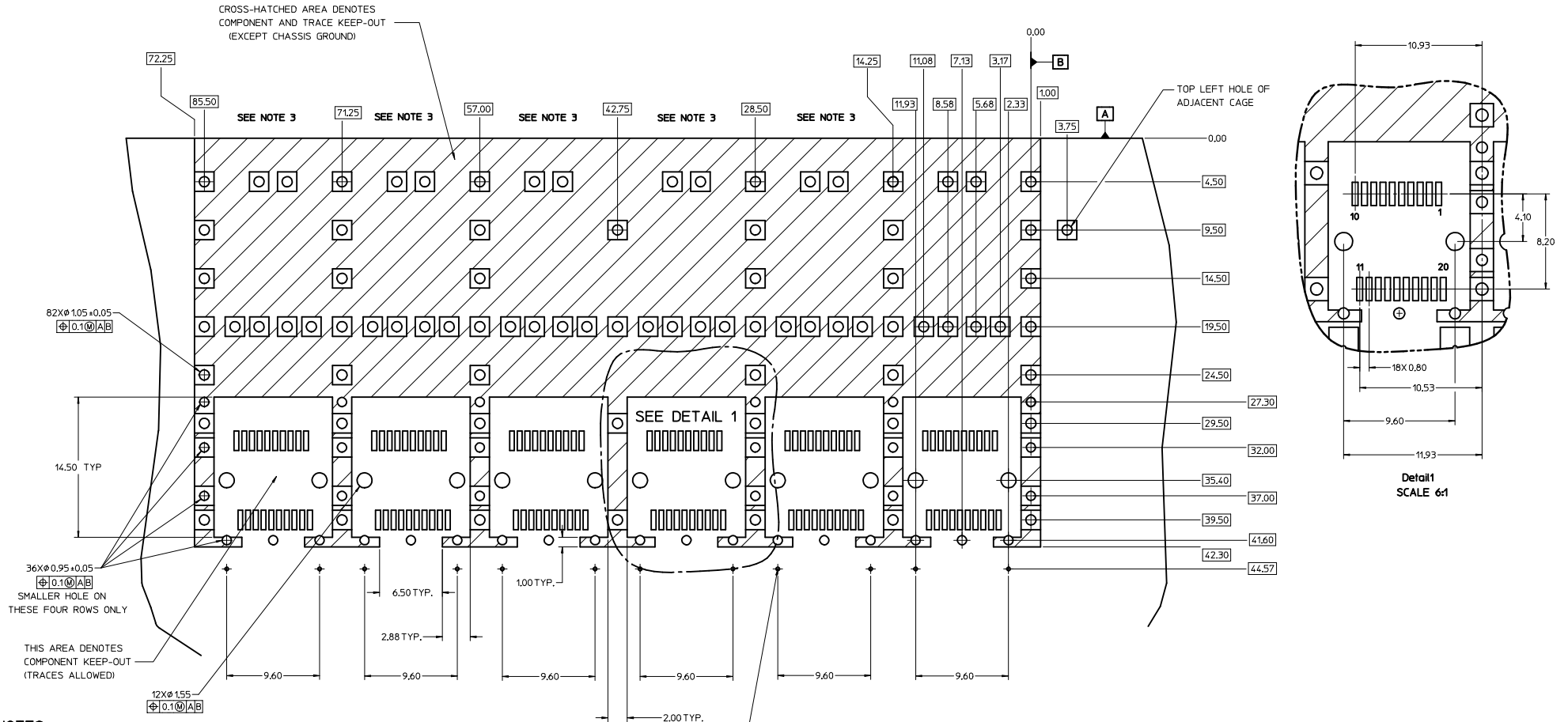
LIGHT PIPE: LEXAN 940A (CLEAR)
 LIGHT PIPE COVER: 0.25 ±0.013 COPPER ALLOY

1. PCB THICKNESS VARIATION MUST BE CONSIDERED WHEN DETERMINING BEZEL OPENING, SIZE LOCATION.
2. DIMENSIONS RELATED TO THE BEZEL/CAGE, ON THE TOP SIDE OF THE PCB ARE TYPICAL ON THE BOTTOM SIDE OF THE PCB.
3. NO RoHS EXEMPTIONS.

SEE REVISION TABLE EC NO: CP02016-0295 DRAWN BY: DRWENWANG07 2015/07/21 CHKD BY: CHYKORCHEN08 2015/08/11 APPRD BY: APPRCHEN08 2015/08/12	QUALITY SYMBOLS ▽=0 ▽=0 ▽=0	GENERAL TOLERANCES (UNLESS SPECIFIED)		DIMENSION STYLE		SCALE 3:1	DESIGN UNITS METRIC	THIRD ANGLE PROJECTION
		mm	INCH	MM ONLY	DATE			
		4 PLACES ±---	±---	DRAWN BY	DATE	TITLE 1X6 SFP LIGHT PIPE ASSEMBLY, BACK-TOP		
		3 PLACES ±---	±---	CHECKED BY	DATE			
		2 PLACES ±0.13	±---	BRUSSELL	2004/07/08			
		1 PLACE ±0.25	±---	APPROVED BY	DATE			
		0 PLACE ±	±---	BRUSSELL	2004/07/08	MATERIAL NO. 747480001		DOCUMENT NO. SD-74748-001
DRAFT WHERE APPLICABLE MUST REMAIN WITHIN DIMENSIONS		ANGULAR ±---		SIZE D		SHEET NO. 1 OF 5		

PCB LAYOUT FOR BELLY TO BELLY MOUNTING

HOST CONNECTOR DETAIL

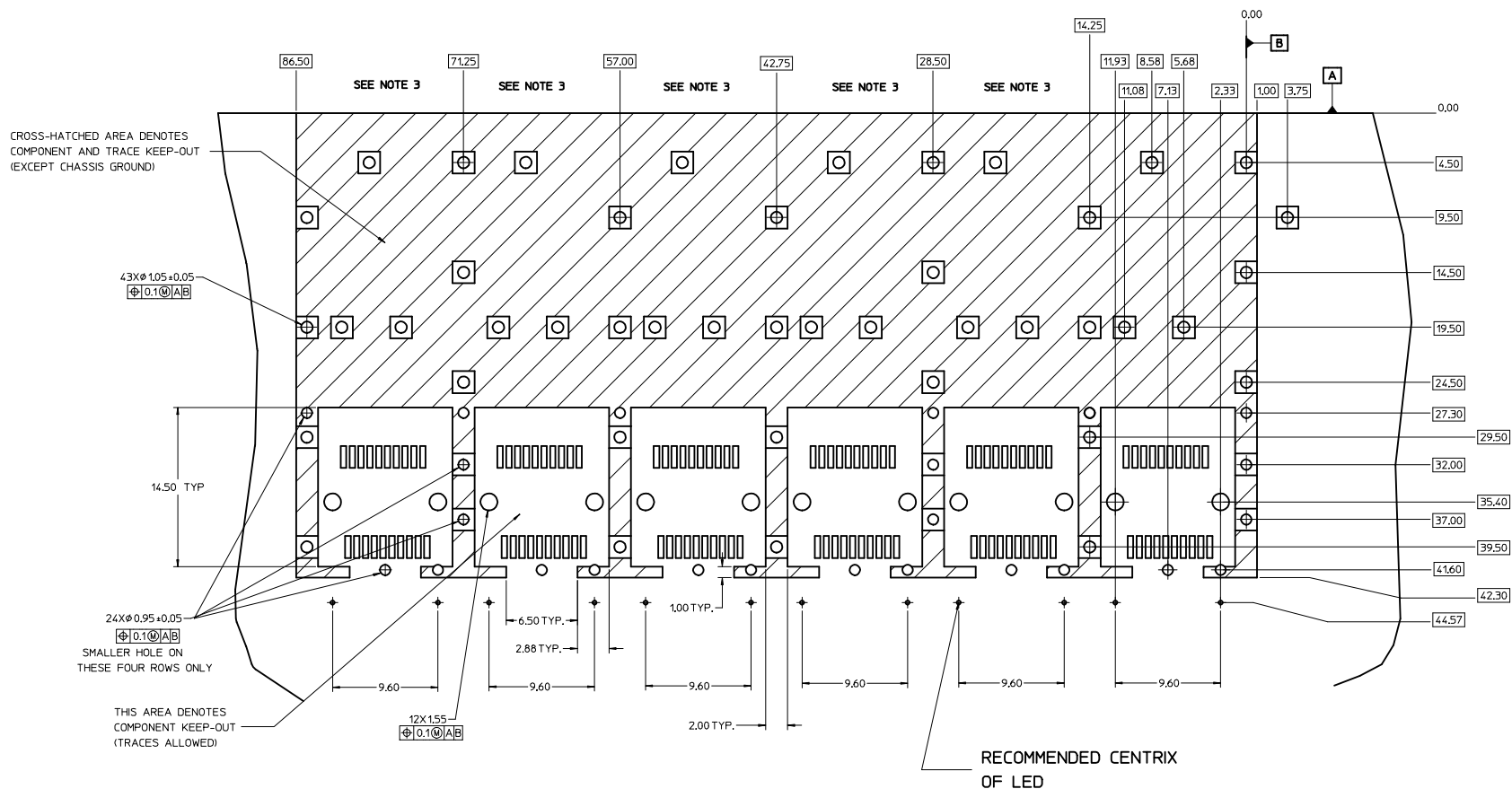


NOTES:

- PADS AND VIAS CONNECT TO CHASSIS GROUND, (94 PLACES).
RECOMMENDED PADS TO BE 2mm SQUARE.
- PLATING OPTIONAL FOR THROUGH HOLES (X PLACES)
- RECOMMENDED PLATING INCLUDES HASL, IMMERSION (GOLD, SILVER, OR TIN), AND OSP.
- HOLE PATTERN REPEATS FOR EACH PORT,
SPACING BETWEEN PORTS IS 14.25mm
- CONNECTOR PAD LAYOUT PER SFP MSA. WILL ACCOMODATE MOLEX CONNECTOR SERIES 74441 OR EQUIVALENT.
- LEDS SHOULD BE PLACED RELATIVE TO THE SFP CONNECTOR POST HOLES.
- DETAILS APPLY TO EACH PORT.

SEE REVISION TABLE		QUALITY SYMBOLS		GENERAL TOLERANCES (UNLESS SPECIFIED)		DIMENSION STYLE		SCALE		DESIGN UNITS		THIRD ANGLE PROJECTION	
REV	DESCRIPTION	SYMBOL	VALUE	mm	INCH	MM ONLY	DATE	5:1	METRIC				
1	DRWNING07 2015/07/21	$\nabla=0$	4 PLACES	±	---		2004/07/08			TITLE 1X6 SFP LIGHT PIPE ASSEMBLY, BACK-TOP			
2	CHKORCHEN08 2015/08/11	$\nabla=0$	3 PLACES	±	---		2004/07/08						
3	APPRORCHEN08 2015/08/12	$\nabla=0$	2 PLACES	±	0.13	---							
			1 PLACE	±	0.25	---							
			0 PLACE	±		---							
				ANGULAR ±		---				MATERIAL NO. 747480001			
				DRAFT WHERE APPLICABLE MUST REMAIN WITHIN DIMENSIONS									DOCUMENT NO. SD-74748-001
										SHEET NO. 2 OF 5		THIS DRAWING CONTAINS INFORMATION THAT IS PROPRIETARY TO MOLEX INCORPORATED AND SHOULD NOT BE USED WITHOUT WRITTEN PERMISSION	

PCB LAYOUT FOR SINGLE SIDE MOUNTING



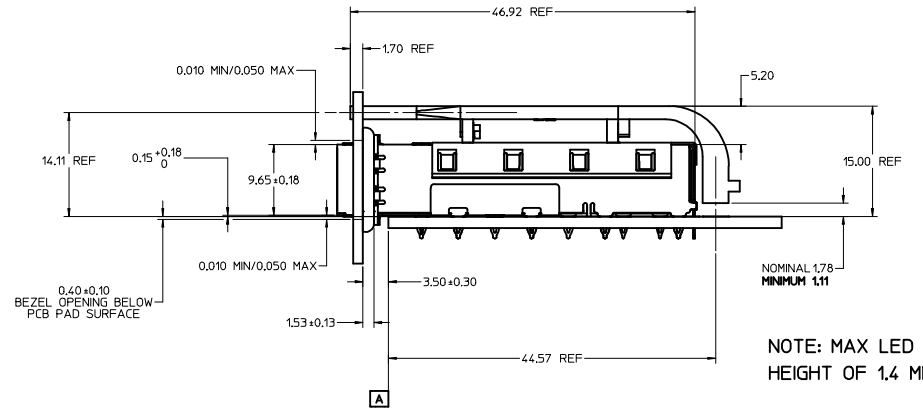
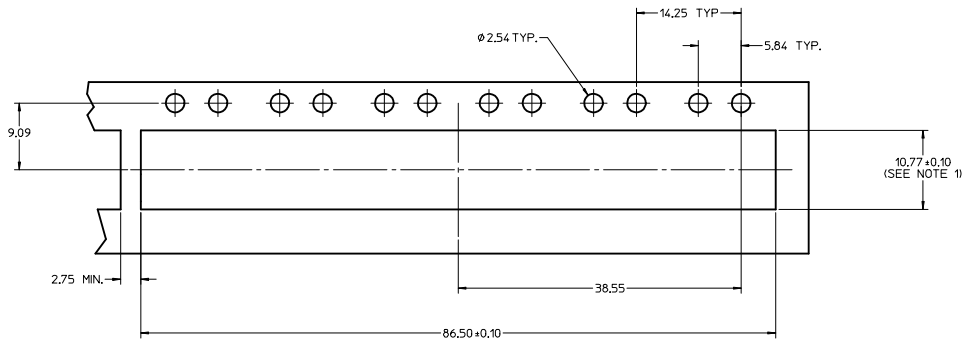
FOR HOST CONNECTOR
SEE DETAIL 1 ON
SHEET 2

NOTES:

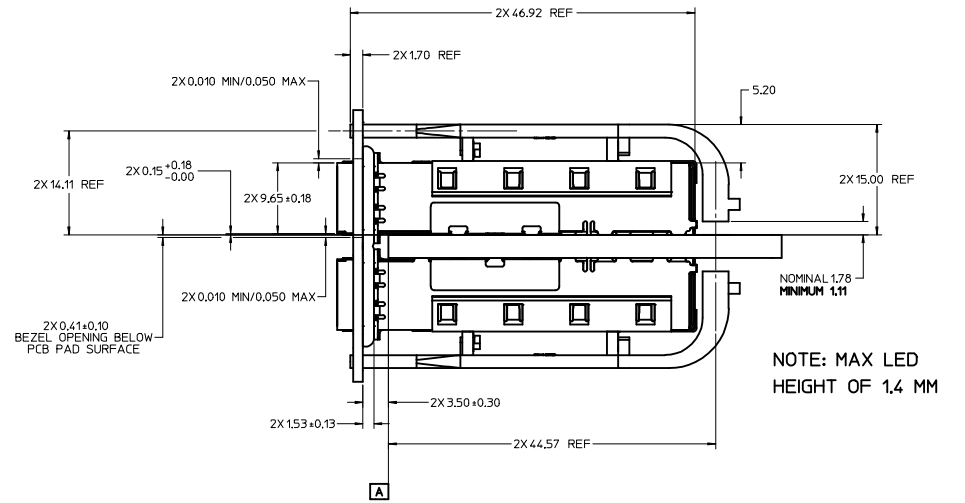
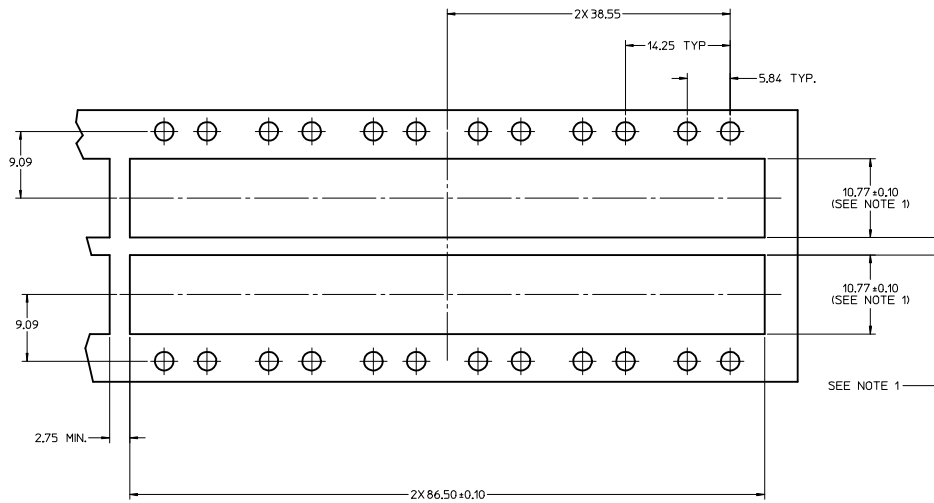
1. PADS AND VIAS CONNECT TO CHASSIS GROUND, (49 PLACES).
RECOMMENDED PADS TO BE 2mm SQUARE.
2. PLATING OPTIONAL FOR THROUGH HOLES (X PLACES)
3. RECOMMENDED PLATING INCLUDES HASL, IMMERSION (GOLD, SILVER, OR TIN), AND OSP.
4. HOLE PATTERN REPEATS FOR EACH PORT,
SPACING BETWEEN PORTS IS 14.25mm
5. CONNECTOR PAD LAYOUT PER SFP MSA. WILL ACCOMODATE MOLEX
CONNECTOR SERIES 74441 OR EQUIVALENT.
6. LEDS SHOULD BE PLACED RELATIVE TO THE SFP CONNECTOR POST HOLES.
7. DETAILS APPLY TO EACH PORT.

SEE REVISION TABLE IEC NO: CPG2016-0295 DRAWN BY: CHYDORCHEN08 APPR: CHYDORCHEN08 DATE: 2015/07/21 DATE: 2015/08/11 DATE: 2015/08/12	QUALITY SYMBOLS	GENERAL TOLERANCES (UNLESS SPECIFIED)	DIMENSION STYLE	SCALE	DESIGN UNITS	THIRD ANGLE PROJECTION
	▽=0	mm INCH	MM ONLY	6:1	METRIC	☉
	▽=0	4 PLACES ±---	DRAWN BY: KSI MONSO	DATE: 2004/07/08	TITLE: 1X6 SFP LIGHT PIPE ASSEMBLY, BACK-TOP	
	▽=0	3 PLACES ±---	CHECKED BY: BRUSSELL	DATE: 2004/07/08	MATERIAL NO: 747480001	
	2 PLACES ±0.13	APPROVED BY: BRUSSELL	DATE: 2004/07/08	DOCUMENT NO: SD-74748-001		SHEET NO: 3 OF 5
	1 PLACE ±0.25	THIS DRAWING CONTAINS INFORMATION THAT IS PROPRIETARY TO MOLEX INCORPORATED AND SHOULD NOT BE USED WITHOUT WRITTEN PERMISSION				
	0 PLACE ±					

BEZEL AND BOARD POSITION DIMENSIONS FOR SINGLE SIDE MOUNTING



BEZEL AND BOARD POSITION DIMENSIONS FOR BELLY TO BELLY MOUNTING



NOTE:

1. PCB THICKNESS VARIATION MUST BE CONSIDERED WHEN DETERMINING BEZEL OPENING, SIZE LOCATION.
2. DIMENSIONS RELATED TO THE BEZEL/CAGE, ON THE TOP SIDE OF THE PCB ARE TYPICAL ON THE BOTTOM SIDE OF THE PCB.

SEE REVISION TABLE IEC NO: CPG2016-0295 DRAWN BY: DRWENWANG07 CHECKED BY: CHYKORCHEN08 APPR: RCHEN08 DATE: 2015/07/21 DATE: 2015/08/11 DATE: 2015/08/12	QUALITY SYMBOLS	GENERAL TOLERANCES (UNLESS SPECIFIED)	DIMENSION STYLE	SCALE	DESIGN UNITS	THIRD ANGLE PROJECTION	
	▽=0	mm	MM ONLY	4:1	METRIC	☉	
	▽=0	INCH	4 PLACES ± ---	DRAWN BY	DATE	TITLE	
	▽=0	± ---	3 PLACES ± ---	KS IMONSO	2004/07/08	1X6 SFP LIGHT PIPE ASSEMBLY, BACK-TOP	
	± 0.13	± ---	CHECKED BY	DATE			
	± 0.25	± ---	BRUSSELL	2004/07/08			
	±	±	APPROVED BY	DATE			
	±	±	BRUSSELL	2004/07/08			
	±	±	MATERIAL NO.	DOCUMENT NO.			
	±	±	747480001	SD-74748-001			
	±	±	DRAFT WHERE APPLICABLE				
	±	±	MUST REMAIN WITHIN DIMENSIONS				
	±	±	SIZE				
	±	±	D				
	±	±	THIS DRAWING CONTAINS INFORMATION THAT IS PROPRIETARY TO MOLEX INCORPORATED AND SHOULD NOT BE USED WITHOUT WRITTEN PERMISSION				

DATE (YEAR/MONTH/DAY)	REVISION	DESCRIPTION
2004/07/08	A	INITIAL RELEASE.
2005/06/03	B	CORRECTED P/N FOR DIALIGHT LED.
2005/06/10	C	UPDATED VIEWS TO SHOW CLEARANCE HOLES ADDED TO THE COVER .
2008/10/23	D	REMOVED 'AREA OF LIGHT PIPE COVERAGE' FROM PCB LAYOUT. ADDED NOTCH TO THE BRIDGE BETWEEN LIGHT PIPES (VISUAL ONLY). ADDED RoHS NOTE.
2015/08/11	E	SHEET 1: @D6: CHANGED DIM 2.84 TYP TO 2.84 REF @E19: CHANGED DIM 4.31 TYP TO 4.3 TYP @G15: DELETED DIM 86.46 @G15: ADDED DIM 86.41 SHEET 4: @F2: CHANGED DIM 2X15.00 TO 2X15.00 REF @E2: CHANGED DIM 1.80 TO NOMINAL 1.78 MINIMUM 1.11 @C5: CHANGED DIM 2X44.57 TO 2X44.57 REF @H5: CHANGED DIM 2X46.92 TO 2X46.92 REF @G6: CHANGED DIM 2X1.70 TO 2X1.70 REF @F9: CHANGED DIM 2X14.11 TO 2X14.11 REF @K2: CHANGED DIM 15.00 TO 15.00 REF @J2: CHANGED DIM 1.80 TO NOMINAL 1.78 MINIMUM 1.11 @I5: CHANGED DIM 44.57 TO 44.57 REF @M5: CHANGED DIM 46.92 TO 46.92 REF @L6: CHANGED DIM 1.70 TO 1.70 REF @K9: CHANGED DIM 14.11 TO 14.11 REF CHANGED "DIM X2" TO "2X DIM" ALL POSITIONS IN THIS DRAWING

SEE REVISION TABLE EC NO: CPG2016-0295 DRAWN BY: CHYKORCHEN07 CHECKED BY: CHYKORCHEN08 APPROVED BY: CHYKORCHEN08 DATE: 2015/07/21 DATE: 2015/08/11 DATE: 2015/08/12	QUALITY SYMBOLS ∇=0 ∇=0 ∇=0	GENERAL TOLERANCES (UNLESS SPECIFIED) mm INCH 4 PLACES ±--- ±--- 3 PLACES ±--- ±--- 2 PLACES ±0.13 ±--- 1 PLACE ±0.25 ±--- 0 PLACE ± ±	DIMENSION STYLE MM ONLY	SCALE 1:1	DESIGN UNITS METRIC	THIRD ANGLE PROJECTION
	DRAWN BY: KSI MONSO CHECKED BY: BRUSSELL APPROVED BY: BRUSSELL DATE: 2004/07/08 DATE: 2004/07/08 DATE: 2004/07/08		TITLE 1X6 SFP LIGHT PIPE ASSEMBLY, BACK-TOP			
	MATERIAL NO. 747480001		DOCUMENT NO. SD-74748-001		SHEET NO. 5 OF 5	
	DRAFT WHERE APPLICABLE MUST REMAIN WITHIN DIMENSIONS SIZE D THIS DRAWING CONTAINS INFORMATION THAT IS PROPRIETARY TO MOLEX INCORPORATED AND SHOULD NOT BE USED WITHOUT WRITTEN PERMISSION					