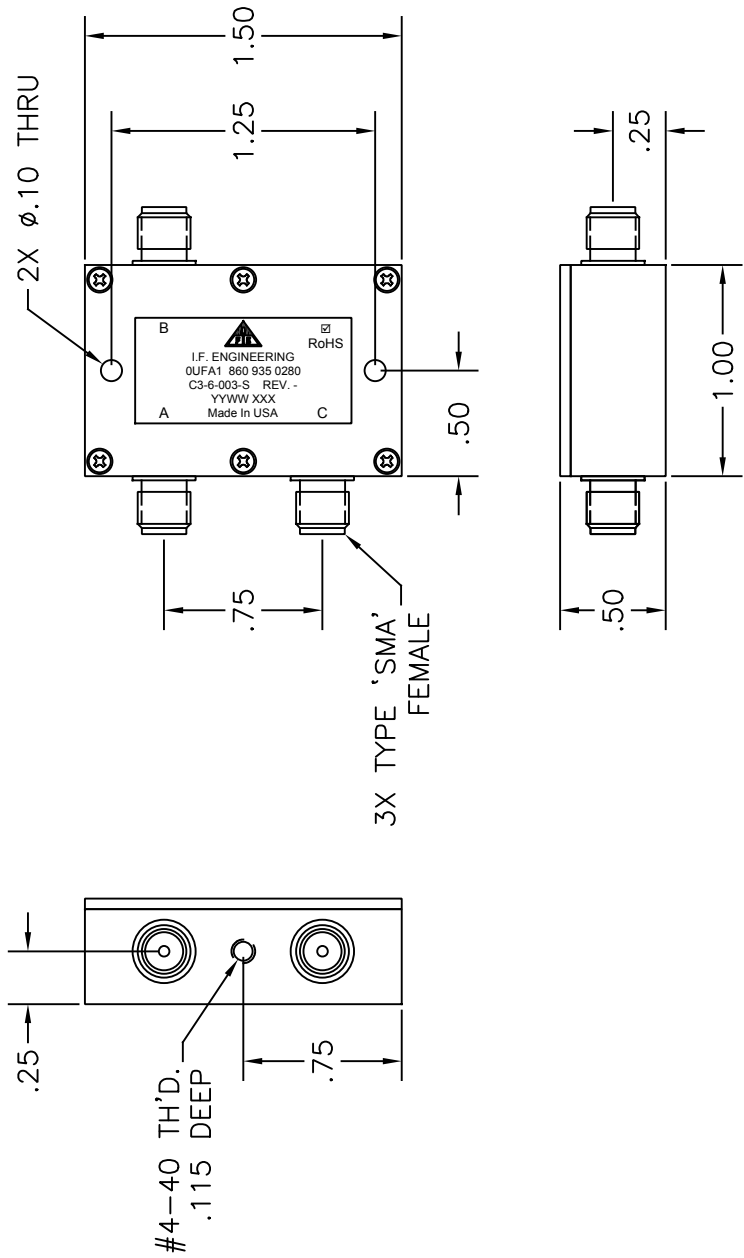


THIS DOCUMENT CONTAINS PROPRIETARY INFORMATION. ANY REPRODUCTION, DISCLOSURE, OR USE OF ITS CONTENTS IS EXPRESSLY PROHIBITED EXCEPT AS AUTHORIZED BY I.F. Engineering Corp

REVISION

LTR.	DESCRIPTION	DATE	APPL.
-	ENG. RELEASED	10/14/20	MJD



ELECTRICAL SPECIFICATION		DIRECTIONAL COUPLER	
FREQUENCY RANGE (MHZ)	20-100	100-500	
COUPLING (dB) NOM.	6	6	
COUPLING TOL. (dB) MAX.	±0.3	±0.3	
COUPLING VARIATION (dB) MAX.	±0.35	±0.35	
INSERTION LOSS (dB) MAX. *	0.7	0.7	
DIRECTIVITY (dB) MIN.	20	20	
VSWR MAX. (PORT A)	1.4:1	1.3:1	
VSWR MAX. (PORTS B & C)	1.3:1	1.3:1	
IMPEDANCE (OHMS) NOM.	50	50	
TEMPERATURE RANGE (°C)	0 TO +50	0 TO +50	
INPUT POWER (WATTS) MAX.	2	2	

* NOTE: INSERTION LOSS DOES NOT INCLUDE THEORETICAL COUPLING LOSS.

PORT	DESIG.
A	INPUT
B	OUTPUT
C	COUPLED

RoHS Compliant

THIRD ANGLE PROJECTION	DATE
MJD	3/9/20
ENGRG APPD AM	10/14/20
MFG APPD JU	10/14/20
QA APPD EJS	10/14/20
RELEASED MJD	10/14/20

		3 FOSHAY ROAD, DUDLEY MA 01571	
		TITLE	
OUTLINE DRAWING C3-6-003-S		SIZE	CODE IDENT NO.
		A	OUFA1
SCALE	DRAWING NO.	REV.	
1:1	110-297-181	-	
SHEET	1	OF	1

- NOTES:
1. MATERIAL: CHASSIS & COVER ALUMINUM
 2. FINISH: CLEAR CHROMATE
 3. SPECIFICATION SUBJECT TO CHANGE WITHOUT NOTICE