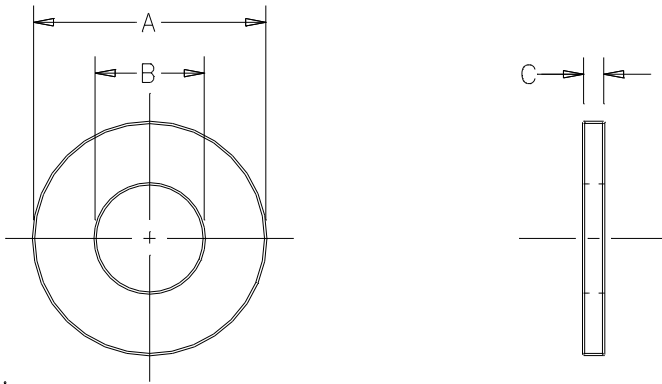


| PART NO. | "A" O.D. | "B" O.D. | "C" THICK. | MATERIAL | FINISH |
|----------|-----------|-----------|------------|----------|-----------------------|
| 901-001 | 5/16 | .147 | .027 | BRASS | NICKEL .00015 MIN. |
| 901-002 | .640±.010 | .495±.010 | .022/.045 | RUBBER | BLACK |

OBS.



NOTES:

1. OIL RESISTANT SYNTHETIC RUBBER, 75-85 DUROMETER HARDNESS.
2. FLAT SURFACES TO BE SMOOTH & FREE OF DEPRESSIONS OR OTHER FLAWS.
3. ALL SHIPMENTS REQUIRE A CERTIFICATE OF COMPLIANCE.

| NO | COMPONENT NO | DESCRIPTION | QTY/M | U/M |
|----|--------------|-------------|-------|-----|
|----|--------------|-------------|-------|-----|

BILL OF MATERIAL

UNLESS OTHERWISE SPECIFIED, DIMENSIONS DO NOT INCLUDE PLATING.

| | |
|-----|--|
| O | DENOTES CRITICAL CHARACTERISTICS. |
| CPK | DENOTES CPK DIMENSIONS, -MINIMUM CPK VALUE |
| ST | DENOTES A CHARACTERISTIC THAT PROVIDES AN INDICATION OF PROCESS PERFORMANCE. PROCEDURE FOR MEASUREMENT AND TRACKING TO BE DEFINED IN LITTELFUSE INSPECTION INSTRUCTIONS. |
| CP | DENOTES CP DIMENSIONS, -MINIMUM CP VALUE MUST BE WITHIN THE DIMENSIONAL LIMITATIONS SHOWN ON DRAWING AND INITIALLY LOCATED TO ALLOW FOR MAXIMUM TOOL LIFE. |

| LTR | REVISION | CHK | APD |
|-----|---|-----|-----|
| Z | 38507C-REVISE & REDRAWN IN NEW FORMAT 7/11/97 KAM | | |
| AA | 81672C-OBS. 901-001 11/1/01 PJM | | |

| COPIES TO | MATL SPEC | FINISH |
|-----------|--------------------------------------|------------------------|
| 1 9 18 | DRW KAM | DATE 6/27/97 SCALE 4:1 |
| 2 10 19 | CHK | DATE SUPER DRW |
| 3 12 20 | APPD | DATE RAW STK WT |
| 4 13 21 | TOLERANCE UNLESS OTHERWISE SPECIFIED | |
| 5 14 23 | TWO PLACE DEC ±.01 | FRACTION |
| 6 15 33 | THREE PLACE DEC ±.005 | ANGULAR |
| 7 16 43 | | |
| 8 17 53 | | |

TITLE WASHERS

UNCONTROLLED DOCUMENT

Littelfuse
DES PLAINES, ILLINOIS 60016

REVISION **A** DRWG. NO. 901-001 THRU 901-002

CAD GENERATED DRAWING - NO PENCIL CHANGES ALLOWED