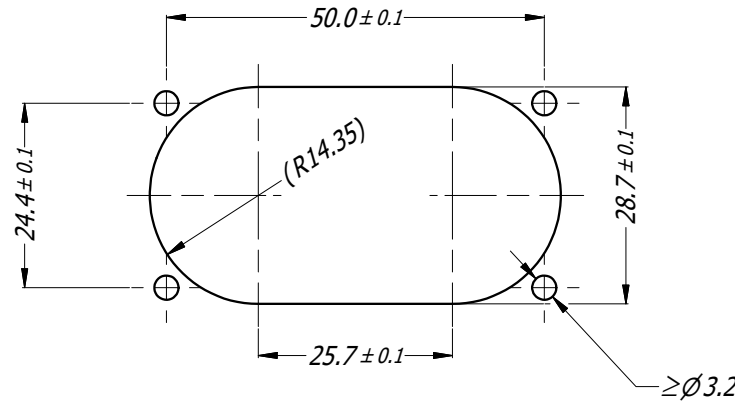
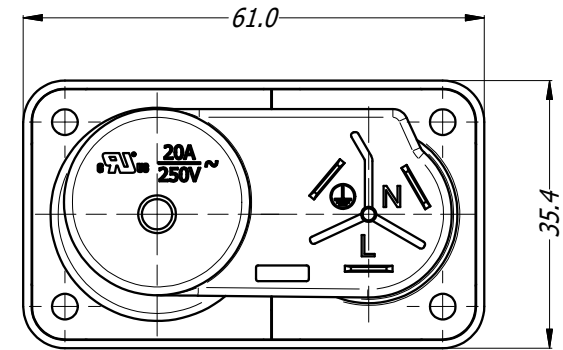
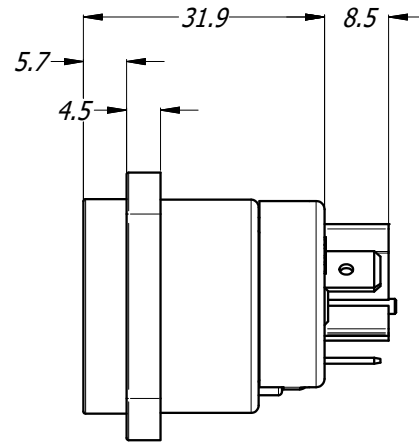
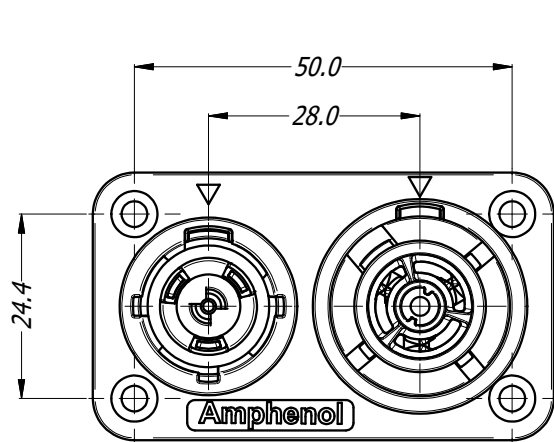
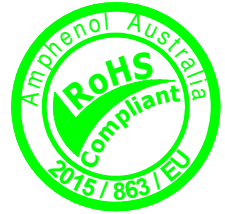
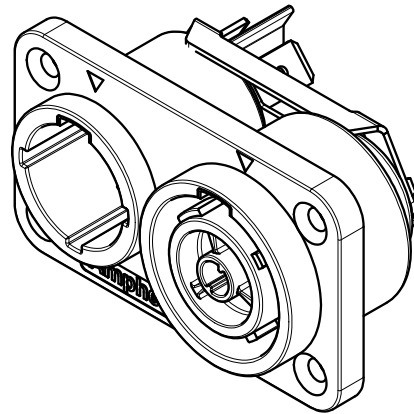


CAUS



PANEL CUTOUT



PATENTS AND APPLICATIONS :

- US 10823914B2
- EP 3514892B1
- JP 6705027B2
- DE 102018101431A1
- HK 40009428A
- CN 110071397A
- EP 3641070A1

NOTES:

- USE SCREW #4 OR M3
- SCREW TORQUE: 0.4 N-m (3.5 lb-in) MAX

UNLESS OTHERWISE SPECIFIED TOLERANCE TO BE		THIS DOCUMENT IS THE PROPERTY OF AMPHENOL AUSTRALIA PTY. LTD. NO PART THEREOF MAY BE REPRODUCED AND USED WITHOUT THE PRIOR WRITTEN CONSENT OF THE OWNER.				Amphenol Amphenol Australia Pty.Ltd, 22 Industry Blvd Carrum Downs, VIC 3201	
LINEAR	ANGULAR	MATERIAL:	DRN: T.N	DATE: 03/04/19	TITLE: DUAL PANEL MOUNT MALE FEMALE HPT SERIES CUSTOMER DWG	PART No: HPT-3-CC	REV: 3
X ± 0.5	X' ± 1	FINISH:	CKD: P.M	DATE: 03/04/19	DRAWING No. 55011084-000	SHEET 3/4	
X.X ± 0.1	X.X' ± 30'		APP'D: P.M	DATE: 03/04/19			
X.XX ± 0.05	X.XX" ± 15'		SCALE: 1:1	SIZE: A4			
BREAK ALL SHARP EDGES AND REMOVE ALL BURRS		DO NOT SCALE		DIMENSIONS IN MILLIMETRES		THIRD ANGLE PROJECTION	