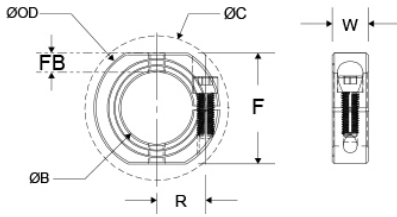




## OF-MCL-35-F

Ruland OF-MCL-35-F, 35mm Shaft Collar With OD Flats And Holes, Black Oxide Steel, One-Piece Clamp Style, 57mm OD, 15mm Width



*\*Additional hardware #01 included*

### Description

Ruland OF-MCL-35-F is a one-piece shaft collar with a 35mm bore, 57mm OD, and 15mm width. It has OD flats and tapped holes for mounting shaft collars to each other or adjacent components. The clamp style design does not mar the shaft, is easy to remove, and is indefinitely adjustable. OF-MCL-35-F is commonly used for guiding, spacing, stopping, mounting, and component alignment. Equipment manufacturers benefit from the tightly controlled face to bore perpendicularity (TIR of ? .05mm). Perpendicularity is critical for alignment when the shaft collar is used as a load bearing face, mechanical stop, or for mounting components such as gears or bearings. Proprietary processes have been developed by Ruland to maintain superior fit, finish, and holding power. OF-MCL-35-F is stamped with the Ruland name and bore size for ease of identification. Forged screws test beyond DIN 912 12.9 standards to ensure maximum holding power. OF-MCL-35-F is manufactured from solid bar stock sourced from select North American mills and machined to a fine burr free finish. Ruland uses 1215 lead-free steel with a proprietary black oxide finish that produces a fine glossy finish while increasing holding power and resisting corrosion. OF-MCL-35-F is RoHS3 and REACH compliant and manufactured in our Marlborough, MA factory under strict controls using proprietary processes.


### Product Specifications

<b>Bore (B)</b>	35 mm	<b>Bore Tolerance</b>	+0.050 mm / +0.012 mm
<b>Outer Diameter (OD)</b>	57 mm	<b>Clearance Diameter (C) MAX</b>	62.4 mm
<b>Width (W)</b>	15 mm	<b>Width Tolerance</b>	+0.076 mm / -0.254 mm
<b>Threaded Mounting Hole</b>	M6	<b>Distance Across Flats (F)</b>	50 mm
<b>Flat to Bore FB</b>	7.5 mm	<b>Recommended Shaft Tolerance</b>	+0.000 mm / -0.013 mm
<b>Forged Clamp Screw</b>	M6 x 18	<b>Screw Material</b>	Alloy Steel
<b>Hex Wrench Size</b>	5.0 mm	<b>Screw Finish</b>	Black Oxide
<b>Seating Torque</b>	16 Nm	<b>Screw Location (R)</b>	23.24 mm
<b>Number of Screws</b>	1 ea	<b>Material Specification</b>	1215 Carbon Steel Bar
<b>Temperature</b>	-40°F to 350°F (-40°C to 176°C)	<b>Finish Specification</b>	Hot Process Black Oxide, Impregnated with Naphthenic Oil, Centrifugally Dried

<b>Manufacturer</b>	Ruland Manufacturing	<b>Country of Origin</b>	USA
<b>Weight (lbs)</b>	0.350400	<b>UPC</b>	634529220832
<b>Tariff Code</b>	8483.60.8000	<b>UNSPC</b>	31162811

**Note 1** Performance ratings are for guidance only. The user must determine suitability for a particular application.

**Note 2** Additional mounting hardware not included.

**Prop 65**  **WARNING** This product can expose you to the chemical Ethylene Thiourea, known to the State of California to cause cancer and birth defects or other reproductive harm. For more information go to [www.P65Warnings.ca.gov](http://www.P65Warnings.ca.gov).

### Installation Instructions

1. Use the OF-MCL-35-F one-piece shaft collar as it is received.
2. Wipe the bore clean.
3. Apply a thin coat of light oil to the shaft.
4. Place the collar onto the desired shaft location and tighten it using a 5.0 mm hex wrench until a slight resistance is felt.
5. Wring collar into its final position and tighten the screw to the full recommended seating torque of 16 Nm using a 5.0 mm torque wrench.