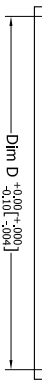
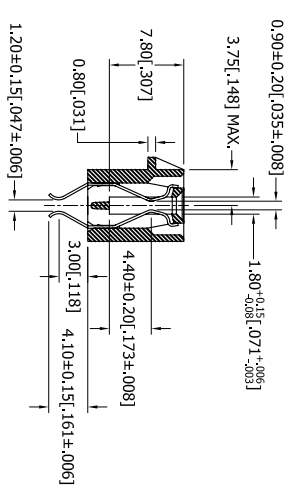
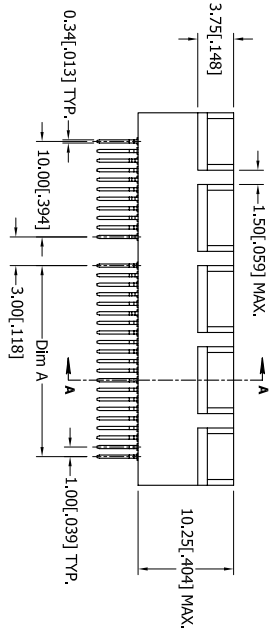
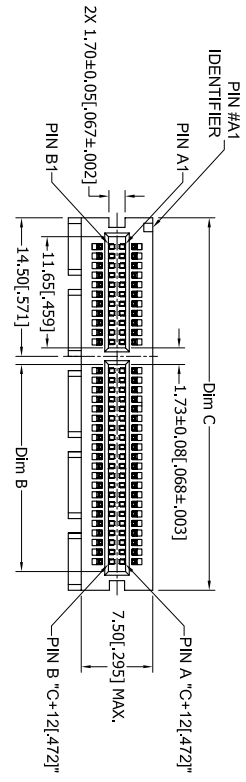


REV.		ECO. NO	DESCRIPTION	DATE	BY
A	1595		INITIAL RELEASE	11/31/2007	VJ
B	1707		UPDATE P/N CODING CHART, PLATING	05/30/08	ASK



PART NUMBER	POSITIONS/ CONTACTS	A		B		C		D		E		G		SPACES 'H'	PIN 'K'
		MM	INCH	MM	INCH	MM	INCH	MM	INCH	MM	INCH	MM	INCH		
N E18DHRN-T94	18/36	6	0.236	7.65	0.301	25	0.984	23	0.906	9.5	0.374	8.15	0.321	6	0.236 A1, B17
N E32DHRN-T94	32/64	20	0.787	21.65	0.852	39	1.535	37	1.457	23.5	0.925	22.15	0.872	20	0.787 A1, B17, B31
N E49DHRN-T94	49/98	37	1.457	38.65	1.522	56	2.204	54	2.126	40.5	1.594	39.15	1.541	37	1.457 A1, B17, B31, B48
N E82DHRN-T94	82/164	70	2.756	71.65	2.821	89	3.504	87	3.425	73.5	2.893	72.15	2.841	70	2.756 A1, B17, B31, B48, B81

UNLESS OTHERWISE SPECIFIED:  
 DIMENSIONS ARE IN INCHES(MM)  
 DIMENSIONS ARE ±.30  
 ANGULAR: ±.50  
 HOLE: ±.02 (.508)  
 XXX±.005(.127)  
 SURFACE FINISH: 63 Ra  
 REMOVE ALL BURRS AND SHARP EDGES .010 MAX  
 INTERPRET DIMENSIONS AND GEOMETRIC TOLERANCING PER: ANSI Y14.5M-1994

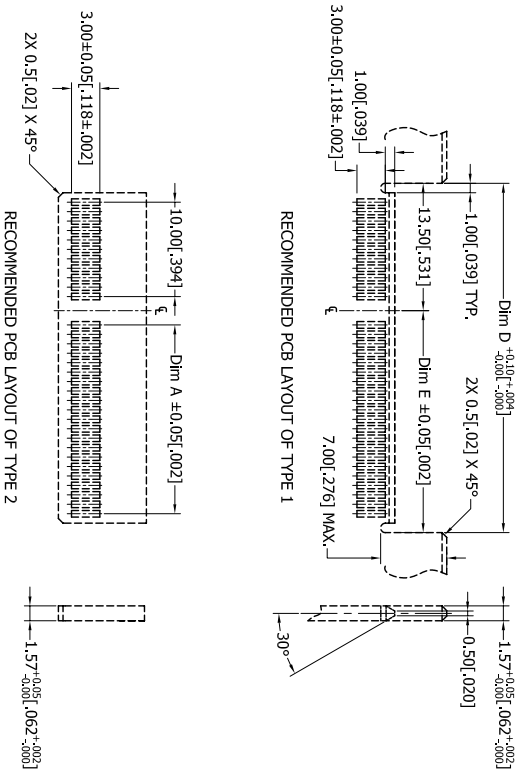
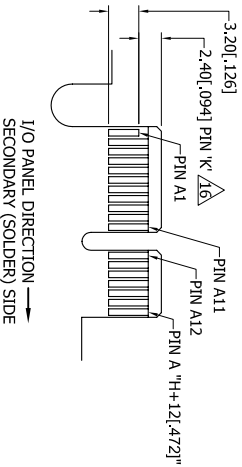
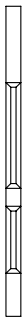
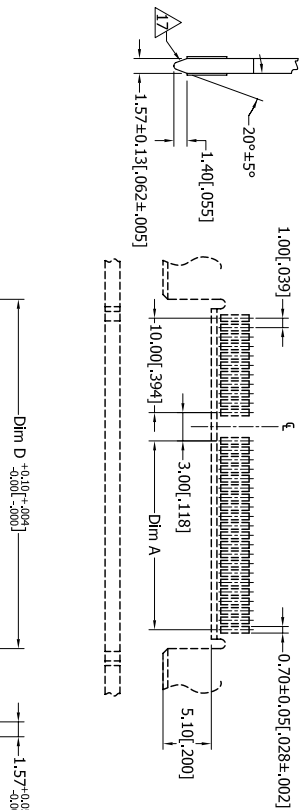
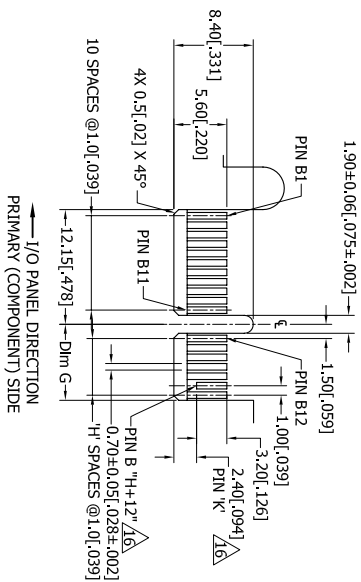
THE INFORMATION HEREIN CONTAINS TRADE SECRETS AND IS NOT TO BE DISCLOSED TO OTHERS FOR ANY PURPOSE EXCEPT AS SPECIFIED IN WRITING BY SULLINS ELECTRONICS OFFICES OR SULLINS ELECTRONICS.

DESCRIPTION: STRADDLE MOUNT, NO PEGS  
 PART NUMBER: N\_E\_DHRN - T94  
 SIZE DWG. NO. 11044

SCALE: 1:1 SHEET 1 OF 2

NOTES:  
 1. INSULATOR MATERIAL: HIGH TEMPERATURE THERMOPLASTIC.  
 2. CONTACT MATERIAL: SEE PART NUMBER CODING.  
 3. PLATING: SEE PART NUMBER CODING.  
 4. OPERATING TEMPERATURE: -10°C ~ 88°C.  
 5. PROCESSING TEMP: 260°C FOR 10 SECONDS MAX.  
 6. UL FLAMMABILITY RATING: 94V-0  
 7. VOLTAGE RATING: 50 VDC MINIMUM AT SEA LEVEL.  
 8. CURRENT RATING: 1.1 AMP PER CONTACT.  
 9. VOLTAGE DROP: 44 MILLI VOLT AT RATED CURRENT.  
 10. INSULATION RESISTANCE: 1000 MEGA OHMS.  
 11. CONNECTOR IDENTIFICATION: THE PART SHALL BE MARKED WITH A PART NUMBER AND BARCODE.  
 12. BOARD THICKNESS ACCOMMODATED: 1.57±0.20(.062±.008).  
 13. BOARD INSERTION FORCE: 1.15N (117.3g) MAX PER CONTACT PAIR WHEN USING A 1.57(.062) TEST BLADE.  
 14. BOARD WITHDRAWAL FORCE: 0.15N (15.31g) MINIMUM PER CONTACT PAIR USING 1.57(.062) PCB  
 15. MODIFICATION: SEE PART NUMBER CODING.  
 16. NO THE BAR PERMITTED FROM CARD EDGE TO LEADING EDGE OF PAD FOR PINS 'A1' AND 'K'.  
 17. CHAMFER EDGES MUST BE FREE OF CUTTING BURR.

ROHS COMPLIANT



## PART NUMBER CODING

N \_ E \_ \_ DHRN - T94 \_

### PLATING

ALL PLATINGS ARE LEAD FREE AND HAVE .000050" NICKEL UNDERPLATE ON CONTACT SURFACE AND TERMINATION

CONTACT SURFACE  
B = .000010" GOLD  
C = .000030" GOLD  
W = GOLD FLASH

### POSITIONS

18 (X1)  
32 (X4)  
49 (X8)  
82 (X16)

### COLOR

1=BLACK  
2=BLUE  
3=GREEN  
4=PURPLE



ROHS COMPLIANT

UNLESS OTHERWISE SPECIFIED:  
DIMENSIONS ARE IN INCHES(MM)  
TOLERANCES:  
XX±.XX [XX]  
XXX±.XXX [XXX]  
XXXX±.XXXX [XXXX]  
SURFACE DIMENSIONS ARE TO CENTER UNLESS OTHERWISE SPECIFIED  
REMOVE ALL BURRS AND SHARP EDGES .010 MAX  
INTERPRET DIMENSIONS AND GEOMETRIC TOLERANCING PER: ANSI Y14.5M-1994

DATE	NAME	DESCRIPTION
11/21/07	VJARA	STRADDLE MOUNT, NO PEGS
		PART NUMBER
		N _ E _ _ DHRN - T94 _
SIZE DWG. NO.		REV
C	11044	B

SCALE: 1:1

SHEET 2 OF 2