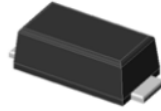


## Features

- Glass passivated superfast recovery Rectifiers
- Very low profile - typical height of 1.0 mm
- Low forward voltage drop
- Low leakage current
- Moisture sensitivity: level 1, per J-STD-020
- AEC-Q101 qualified. For automotive customers only
- High temperature soldering guaranteed: 260°C/10 seconds
- Halogen-free according to IEC 61249-2-21 definition



RoHS  
COMPLIANT



eSGA  
(SOD-123FL)

## Typical Applications

For use of general purpose rectification in lighting, cellular phone, portable device, power supplies and other consumer applications.

Maximum Ratings (TA = 25 °C unless otherwise noted)							
Parameter	Symbol	AFU1	AFU2	AFU3	AFU4	AFU5	Unit
Maximum repetitive peak reverse voltage	VRRM	50	100	200	400	600	V
Maximum RMS voltage	VRMS	35	70	140	280	420	V
Maximum DC blocking voltage	VDC	50	100	200	400	600	V
Maximum average forward rectified current	IF(AV)	1					A
Peak forward surge current 8.3 ms single half sine-wave superimposed on rated load	IFSM	30					A
Operating junction and storage temperature range	TJ, TSTG	- 55 to + 150					°C

Electrical Characteristics (TA = 25 °C unless otherwise noted)								
Parameter	Test Conditions	Symbol	AFU1	AFU2	AFU3	AFU4	AFU5	Unit
Maximum instantaneous forward voltage	1 A	V <sub>F</sub>	0.95			1.3	1.7	Volts
Maximum DC reverse current at rated DC blocking voltage	TA=25°C TA=125°C	I <sub>R</sub>			5.0 100			µA
Maximum reverse recovery time	I <sub>F</sub> =0.5A, I <sub>R</sub> =1.0A, I <sub>rr</sub> =0.25A	t <sub>rr</sub>			35			nS
Typical junction capacitance	4.0 V, 1 MHz	C <sub>J</sub>			0.75			pF
Typical thermal resistance <sup>1)</sup>	junction to ambient	R <sub>θJA</sub>			66			°C/W
	junction to case	R <sub>θJC</sub>			32			
	junction to mount	R <sub>θJM</sub>			1			

Note:1), The thermal resistance from junction to ambient, case or mount, mounted on P.C.B with 5×5mm copper pads, 2 OZ, FR4 PCB

## Ratings and Characteristics Curves

(TA = 25°C unless otherwise noted)

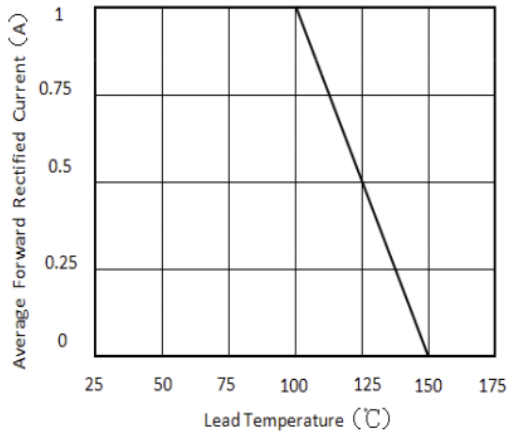


Figure 1. Forward Current Derating Curve

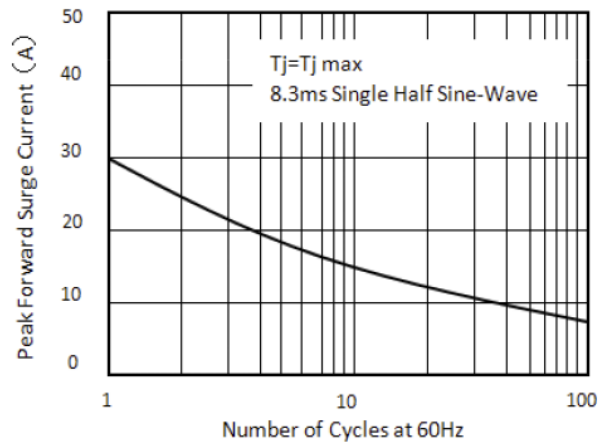


Figure 2. Maximum Non-Repetitive Peak Forward Surge Current

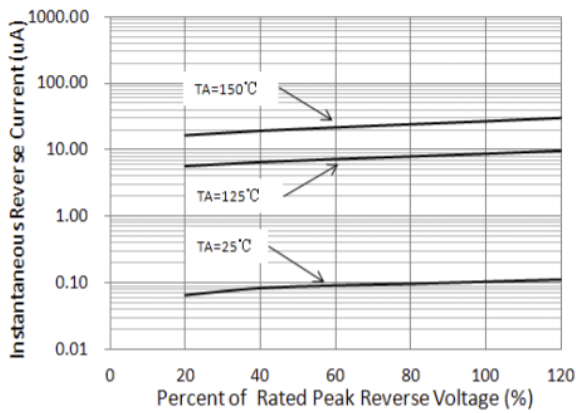


Figure 3. Typical Reverse Characteristics

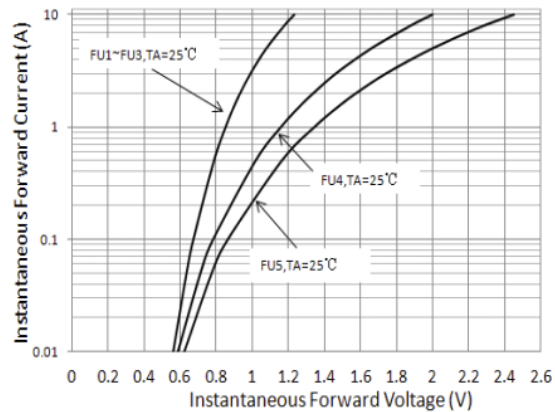


Figure 4. Typical Instantaneous Forward Characteristics

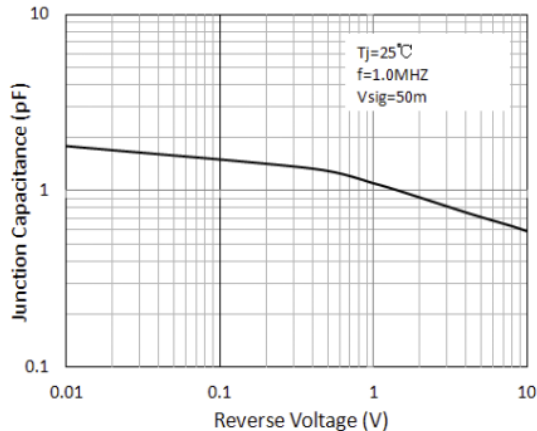
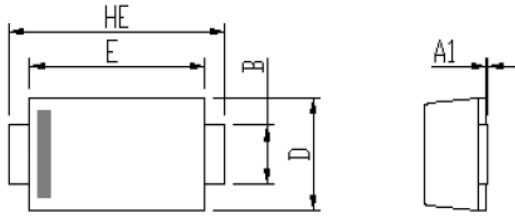


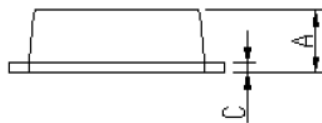
Figure 5. Typical Junction Capacitance

## Package Outline Dimensions

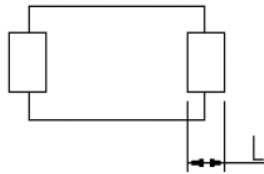
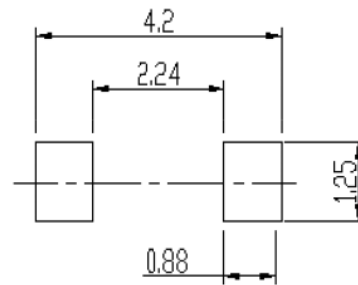
in inches (millimeters)



DIM	Unit: mm		Unit: inch	
	MIN	MAX	MIN	MAX
A	0.9	1.08	0.035	0.043
A1	0	0.1	0.000	0.004
B	0.85	1.05	0.033	0.041
C	0.1	0.25	0.004	0.010
D	1.7	2	0.067	0.079
E	2.9	3.1	0.114	0.122
L	0.43	0.83	0.017	0.033
HE	3.5	3.9	0.138	0.154



Soldering footprint



## Packing Information

### Packing quantities:

3000 pcs/Reel, 40 Reels/Box; 8mm Tape, 7" Reel

### Tape & Reel Specification

