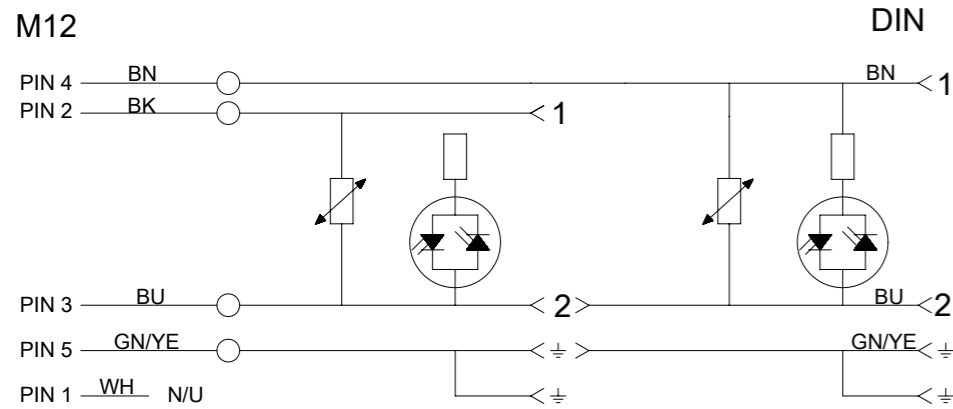
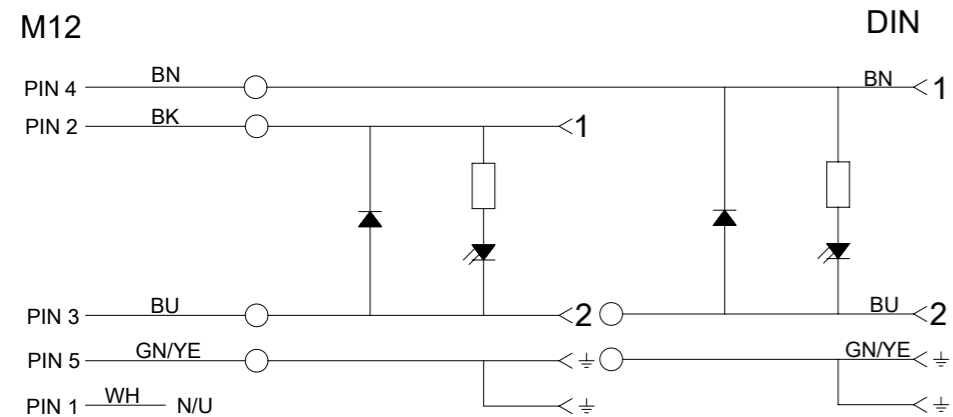


VIEW FROM FRONT SIDE  
SCALE 2:1

**ELECTRICAL DIAGRAM C4**

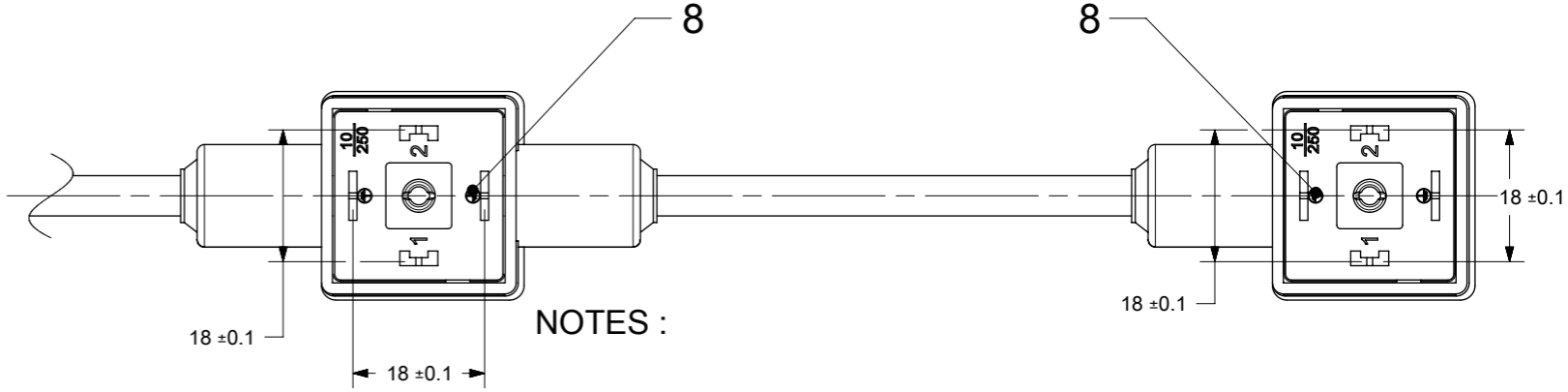
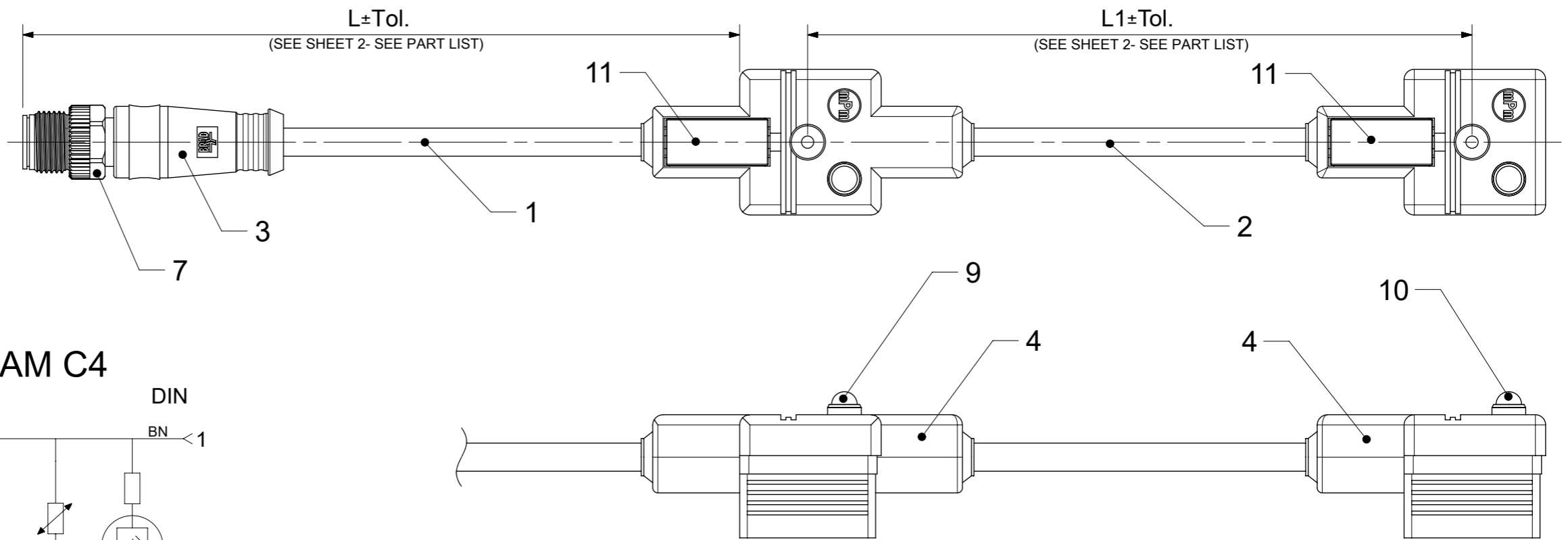
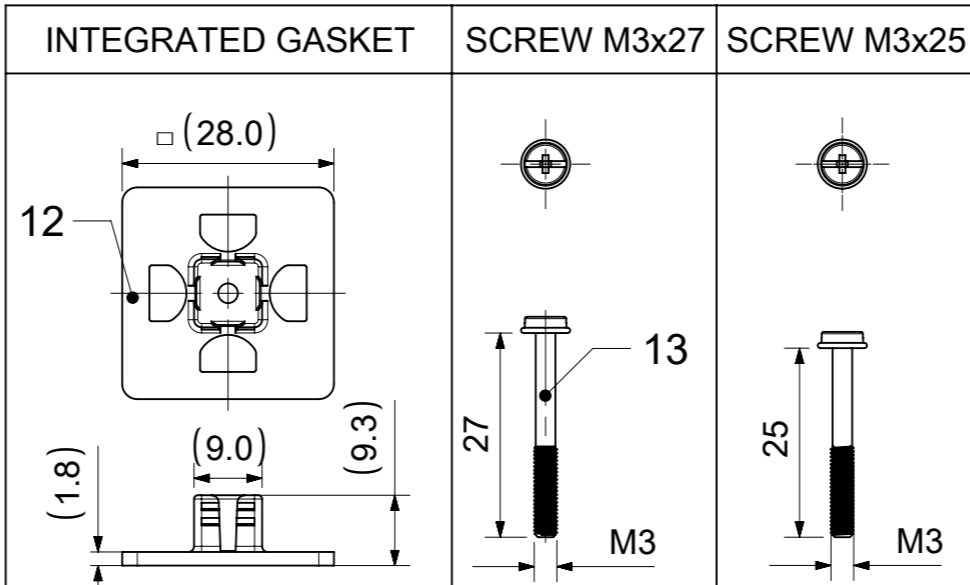
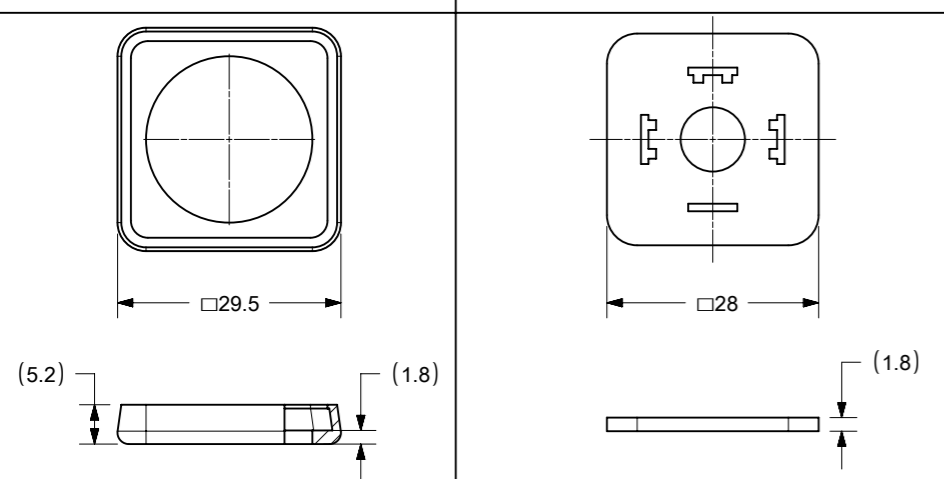


**ELECTRICAL DIAGRAM C3**



**PROFIED GASKET**

**FLAT GASKET**



**NOTES :**

**ELECTRICAL - CURRENT : MAX. 5.0A**  
**CONTACT RESISTANCE : ≤15 milliohms MAX.**  
**INSULATION RESISTANCE : 100 Megaohms MIN.**  
**PHYSICAL - OPERATING TEMPERATURE WITH :**  
**NITRILE RUBBER (NBR) GASKET : -40°C TO +90°C**  
**LIVE CONTACT DISTANCE :**  
**FORM A - 18.00mm**  
**ENVIRONMENTAL - IP65 SEALING PROTECTION(FIXING SCREW)**

THIS DRAWING CONTAINS INFORMATION THAT IS PROPRIETARY TO MOLEX ELECTRONIC TECHNOLOGIES, LLC AND SHOULD NOT BE USED WITHOUT WRITTEN PERMISSION		CURRENT REV DESC: ENG NO. CORRECTED FOR P/N - 1210550158		<b>molex</b>	
DIMENSION UNITS: mm		SCALE: 1:1			
GENERAL TOLERANCES (UNLESS SPECIFIED)		EC NO: 660219		DOCUMENT NUMBER: 1210550354	
ANGULAR TOL ± 1.0°		DRWN: SSM		DOC TYPE: PSD	
4 PLACES ±		CHK'D: RSILLER		DOC PART: 000	
3 PLACES ±		APPR: RSILLER		REVISION: A3	
2 PLACES ± 0.05		INITIAL REVISION:		SHEET NUMBER: 1 OF 2	
1 PLACE ± 0.3		DRWN: SSM		MATERIAL NUMBER: SEE PART LIST	
0 PLACES ± 0.5		APPR: THAERDT		CUSTOMER: GENERAL MARKET	
DRAFT WHERE APPLICABLE MUST REMAIN WITHIN DIMENSIONS		THIRD ANGLE PROJECTION		SERIES: 121055	
		DRAWING: A3-SIZE		CUSTOMER: GENERAL MARKET	

# ENG No. MATRIX

**E 6 5 A P 2 N X X X X X X X X**

E6 - OVERMOLDED DUAL DIN CORDSET

5 - FORM A

A = M12 STRAIGHT

Cable type: P2-PUR 20AWG

Cable Length in Meters (L):  
A=1  
B=1.5  
C=2  
V=13

Head Colour:  
N - Black

Cable Length in cm Between 2 connectors (L1)  
13=13 cm  
20=20 cm  
25=25 cm

Earth PIN Location:  
1=Double Earth on 6H and 12H  
2=H12

Internal Circuit see Wiring Configuration

Voltage and LED color  
B= 24V Green  
2= 24V Red  
H= 24V Yellow

Type of Gasket and Screw:  
1 = NBR Profile Gasket+Fixing Screw M3X25mm  
2 = NBR Flat Gasket + Fixing Screw M3x25mm  
P = NBR Integrated Gasket + Fixing Screw with Washer M3x27mm Assembled on Connector

## CABLE SPECIFICATION :

CABLE ITEM No.	CROSS SECTION	JACKET	COLOR	STATIC TEMPERATURE	DYNAMIC TEMPERATURE	VOLTAGE RATING
CABLE -1	5x0.50mm <sup>2</sup>	PUR	BLACK	-25°C TO +90°C	-5°C TO +90°C	300V
CABLE -2	3x0.50mm <sup>2</sup>	PUR	BLACK	-30°C TO +90°C	-5°C TO +90°C	300V

## BOM

ITEM	QTY	DESCRIPTION	MATERIAL	FINISH/COLOR
13	2	SCREW M3X27 WITH WASHER M3	-	-
12	2	GASKET	NBR	-
11	2	LABEL; PLASTIC 9X20	ABS	WHITE
10	1	PCB WITH ELECTRONIC COMPONENTS	-	SEE PART No. KEY
9	1			
8	2	MOUNTED INSERT ASSY 2P+2T	UL94-V0	BLACK
7	1	COUPLING NUT M12 MALE	BRASS	NICKEL
6	5	CONTACT 10 MALE	BRONZE	GOLD OVER NICKEL
5	1	INSERT MALE 5P	PUR	BLACK
4	-	MOULDING MATERIAL	PP	BLACK
3	-	MOULDING MATERIAL	TPU	BLACK
2	-	CABLE-2 3X0.5MM	PUR	BLACK
1	-	CABLE-1 5X0.5MM	PUR	BLACK

## PART LIST

MOLEX PN	ENGINEERING NO.	L[mm]	L1[mm]
1210550130	E65AP2NA2011C4H	1000	200
1210550131	E65AP2NB2011C4H	1500	200
1210550158	E65AP2NA201PC4H	1000	200
1210550170	E65AP2NA131PC32	1000	130
1210550208	E65AP2NA1311C4B	1000	130
1210550250	E65AP2NA1322C4B	1000	130
1210550264	E65AP2NA1312C4B	1000	130
1210550354	E65AP2NA131PC4B	1000	130
1210550355	E65AP2NA251PC4B	1000	250
1210550356	E65AP2NV131PC4B	13000	130

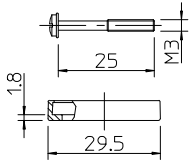
OVER	UP TO AND INCLUDING	TOLERANCE
0	500	-10/+20
500	1000	±20
1000	3000	±30
3000	5000	±40
5000	10000	±50
10000	15000	±100
15000	20000	±150
20000		±L/100

THIS DRAWING CONTAINS INFORMATION THAT IS PROPRIETARY TO MOLEX ELECTRONIC TECHNOLOGIES, LLC AND SHOULD NOT BE USED WITHOUT WRITTEN PERMISSION

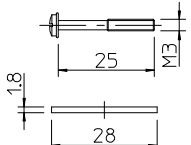
DIMENSION UNITS	SCALE	CURRENT REV DESC: ENG NO. CORRECTED FOR P/N - 1210550158	<b>molex</b>		
mm	1:1				
GENERAL TOLERANCES (UNLESS SPECIFIED)			DUAL DIN E65 FORM A + M12		
ANGULAR TOL	± 1.0°		PRODUCT CUSTOMER DRAWING		
4 PLACES	±	EC NO: 660219	DOCUMENT NUMBER		
3 PLACES	±	DRWN: SSM 2021/03/25	1210550354		
2 PLACES	± 0.05	CHK'D: RSILLER 2021/04/07	DOC TYPE DOC PART REVISION		
1 PLACE	± 0.3	APPR: RSILLER 2021/04/07	PSD 000 A3		
0 PLACES	± 0.5	INITIAL REVISION:	SHEET NUMBER		
DRAFT WHERE APPLICABLE MUST REMAIN WITHIN DIMENSIONS		DRWN: SSM 2018/12/20	2 OF 2		
THIRD ANGLE PROJECTION		APPR: THAERDT 2018/12/21	MATERIAL NUMBER CUSTOMER		
DRAWING		A3-SIZE	SERIES 121055		
			SEE PART LIST GENERAL MARKET		

10 9 8 7 6 5 4 3 2 1

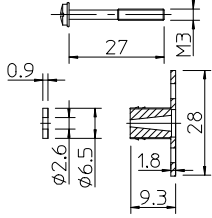
Screw M3x25  
and Profile Gasket  
Qty 2  
(See sheet 2)



Screw M3x25  
and Flat Gasket  
Qty 2  
(See sheet 2)



Screw M3x27  
with Grommet  
& Integrated Gasket  
Qty 2  
(See sheet 2)



PART NUMBER MATRIX

E 6 5

A

X

X

X

X

X

1

X

X

X

X

X

E65-Form A  
(6mm contact spacing)

Number of poles:  
A-M2 straight

Cable type:  
N-PC  
I-CEI  
P-PUR  
A-PC CSA-UL  
B-PUR CSA-UL

Cable cross section area:  
2-0.5 mm<sup>2</sup> (20AWG)  
3-0.75 mm<sup>2</sup> (18AWG)

Head colour:  
A-Black  
B-Black  
C-Black

L - Cable length:  
Q-M2 moulded on the DN head

L1 - Distance between the two head in cm  
15-18mm

Earth pin location:  
I-H6/M12

Gasket screws:  
1-NBR profile  
2-NBR flat  
3-Silicon profile  
4-Silicon flat  
5-NBR integrated gasket+screw  
6-NBR integrated gasket+screw (IP67)

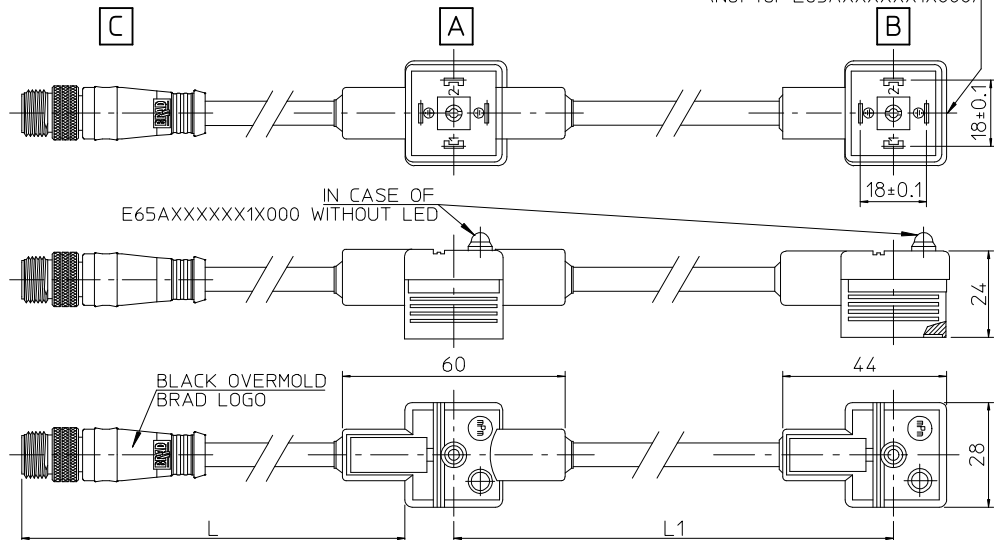
Internal circuit type:  
K-NBR integrated gasket+titanium steel screw (IP 67)

Supply voltage and LED colours:  
1 - 5-Red LED  
A - E-Green LED  
6 - M-Amber LED

1A-G-12V  
2B-H-24V  
3-G-48V  
4-DL-15V  
5-E-M-230V

EXAMPLE:  
E65AP2NA2011C4H

CIRCUIT TAMPO PRINTOUT/WHITE  
(Not for E65AXXXXXX1X000)



Over	Up to and including	Tolerance
0	1000	±20
1000	3000	±30
3000	5000	±40
5000	10000	±50
10000	15000	±100
15000	20000	±150
20000		±L/100

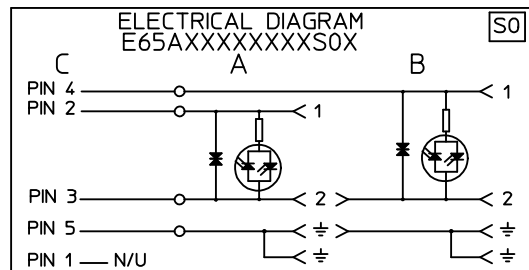
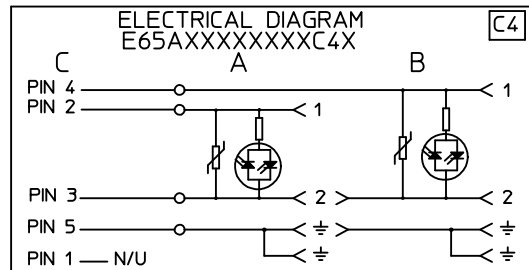
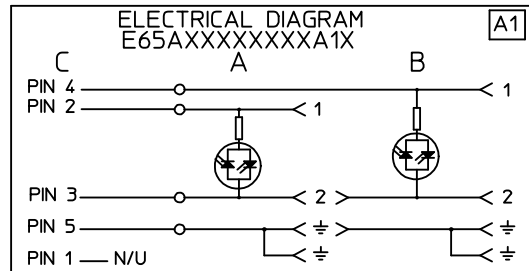
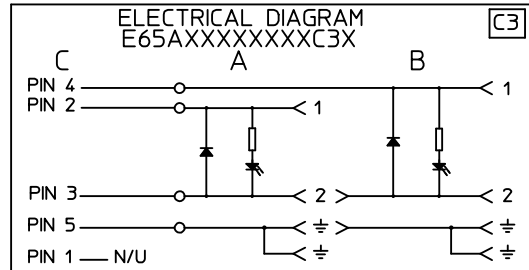
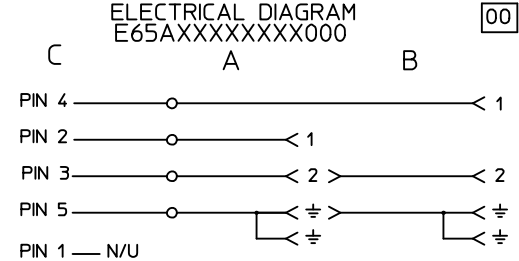


Table 1 - PNs list

Molex PN	Engineering No.	L [mm]	L1 [mm]
1210550072	E65AI2NY1411C4H	500	140
1210550130	E65AP2NA2011C4H	1000	200
1210550131	E65AP2NB2011C4H	1500	200
1210550138	E65AP2NC2011C4H	2000	200
1210550158	E65AP2NA201PC4H	1000	200
1210550170	E65AP2NA131PC32	1000	130
1210550178	E65AP2NA3011C4L	1000	300
1210550208	E65AP2NA1311C4B	1000	130
1210550250	E65AP2NA1322C4B	1000	130
1210550260	E65AP3NB201PSOH	1500	200
1210550264	E65AP2NA1312C4B	1000	130
1210550305	E65AP2NC201KSOH	2000	200
1210550319	E65AI3NB1411C4H	1500	140
1210550320	E65AI3NE1411C4H	3000	140

ORIGINAL RELEASE  
EC NO: IPG2016-0461  
DRWN: JMARSZALEK 2013/10/30  
CHKD:  
APPR: MIWASIECZKO 2015/09/28

QUALITY SYMBOLS  
▽=0  
◁=0

DESCRIPTION  
REV

GENERAL TOLERANCES (UNLESS SPECIFIED)

	mm	INCH
4 PLACES	± ---	± ---
3 PLACES	± ---	± ---
2 PLACES	± ---	± ---
1 PLACE	± ---	± ---
0 PLACE	± ---	± ---

ANGULAR ±---°

DRAFT WHERE APPLICABLE  
MUST REMAIN  
WITHIN DIMENSIONS

DIMENSION STYLE  
MM ONLY

DRAWN BY: JMARSZALEK  
DATE: 2013/10/30

CHECKED BY: \_\_\_\_\_  
DATE: \_\_\_\_\_

APPROVED BY: MIWASIECZKO  
DATE: 2015/09/28

MATERIAL NO. SEE TABLE 1

SCALE: -  
DESIGN UNITS: METRIC  
THIRD ANGLE PROJECTION

TITLE: E65AXXXXXX1XXXX  
DUAL DIN FORM A WITH M12

**molex**

DOCUMENT NO. SD-121055-007  
SHEET NO. 1 OF 1

THIS DRAWING CONTAINS INFORMATION THAT IS PROPRIETARY TO MOLEX  
INCORPORATED AND SHOULD NOT BE USED WITHOUT WRITTEN PERMISSION

9 8 7 6 5 4 3 2 1