










washer for EMERGENCY STOP, yellow, Outer diameter 60 mm, Inside diameter 22.5 mm, Thickness 2 mm, without inscription

product brand name	SIRIUS ACT		
product designation	EMERGENCY STOP plate		
product type designation	3SU1		
General technical data			
shock resistance for railway applications according to EN 61373	Category 1, Class B		
vibration resistance for railway applications according to EN 61373	Category 1, Class B		
Substance Prohibitation (Date)	10/01/2014		
Ambient conditions			
ambient temperature			
• during operation	70 ... -25 °C		
• during storage and transport	80 ... -40 °C		
Accessories			
material of accessory	Plastic		
fastening method of label	without		
marking of backing plate	none		
shape of backing plate	Round		
color of backing plate	yellow (plate); black (text)		
product function illuminated backing plate	No		
Certificates/ approvals			
General Product Approval		Declaration of Conformity	
	Confirmation		
			
			
Test Certificates		Marine / Shipping	
Type Test Certificates/Test Report	Special Test Certificate		
			
			
other	Environment		
Confirmation	Environmental Confirmations		

Further information

Siemens has decided to exit the Russian market (see here).

<https://press.siemens.com/global/en/pressrelease/siemens-wind-down-russian-business>

Siemens is working on the renewal of the current EAC certificates.

Please contact your local Siemens office on the status of validity of the EAC certification if you intend to import or offer to supply these products to an EAC relevant market (other than the sanctioned EAEU member states Russia or Belarus).

Information on the packaging

<https://support.industry.siemens.com/cs/ww/en/view/109813875>

Information- and Downloadcenter (Catalogs, Brochures,...)

<https://www.siemens.com/ic10>

Industry Mall (Online ordering system)

<https://mall.industry.siemens.com/mall/en/en/Catalog/product?mlfb=3SU1900-0BN31-0AA0>

Cax online generator

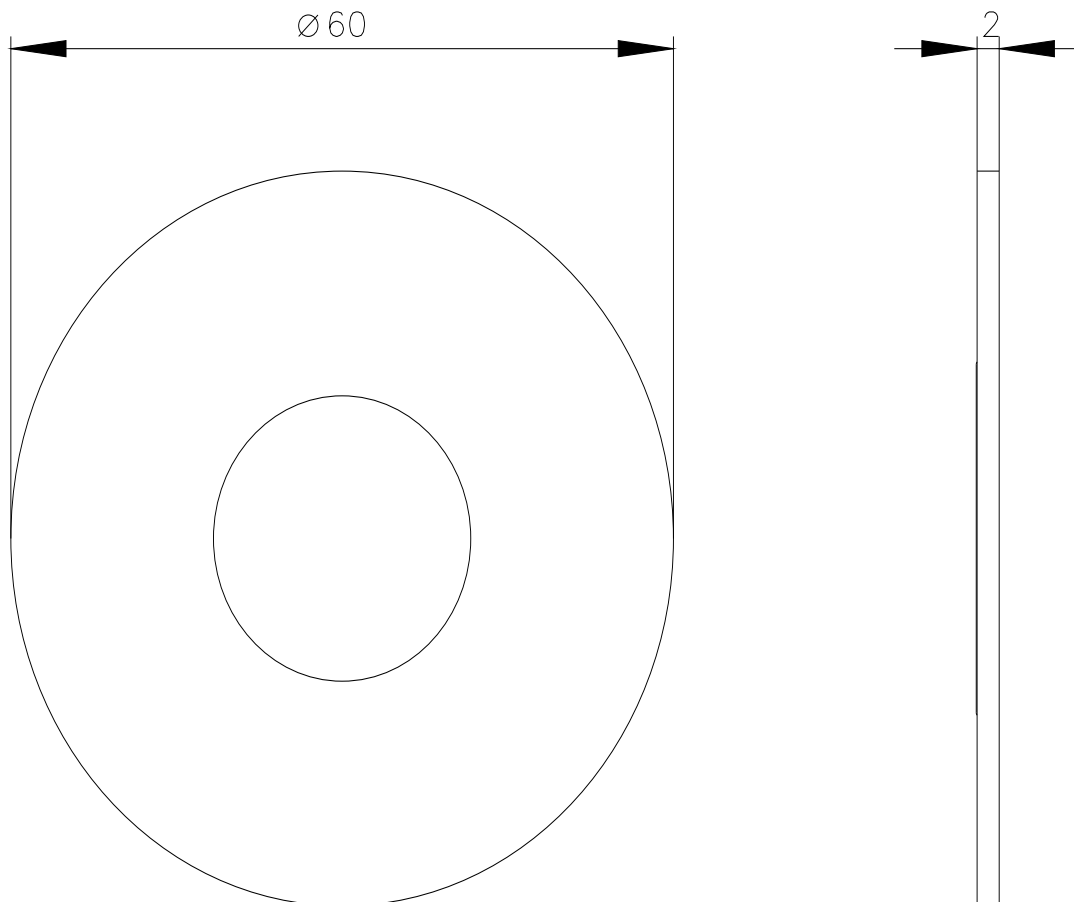
<http://support.automation.siemens.com/WW/CAXorder/default.aspx?lang=en&mlfb=3SU1900-0BN31-0AA0>

Service&Support (Manuals, Certificates, Characteristics, FAQs,...)

<https://support.industry.siemens.com/cs/ww/en/ps/3SU1900-0BN31-0AA0>

Image database (product images, 2D dimension drawings, 3D models, device circuit diagrams, EPLAN macros, ...)

http://www.automation.siemens.com/bilddb/cax_de.aspx?mlfb=3SU1900-0BN31-0AA0&lang=en



last modified:

3/29/2022 