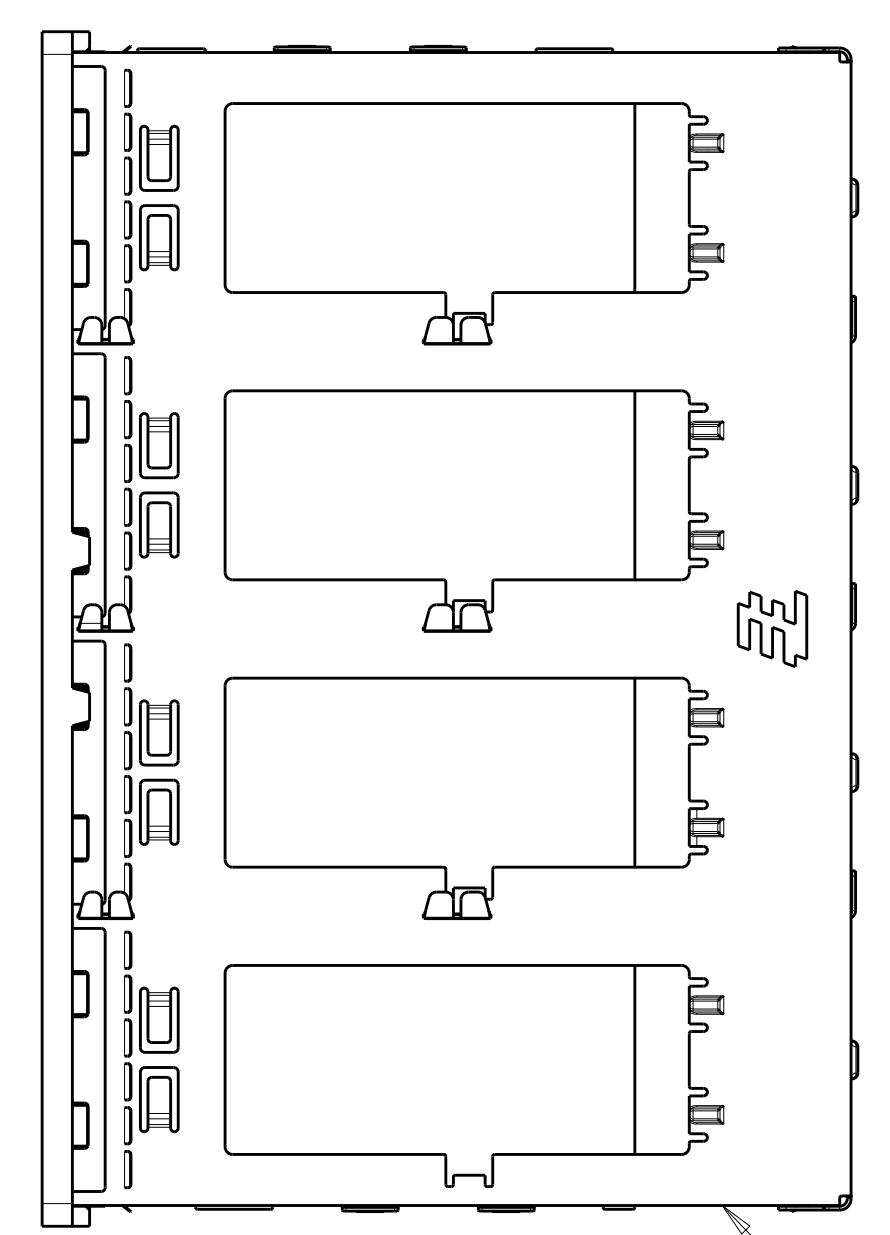
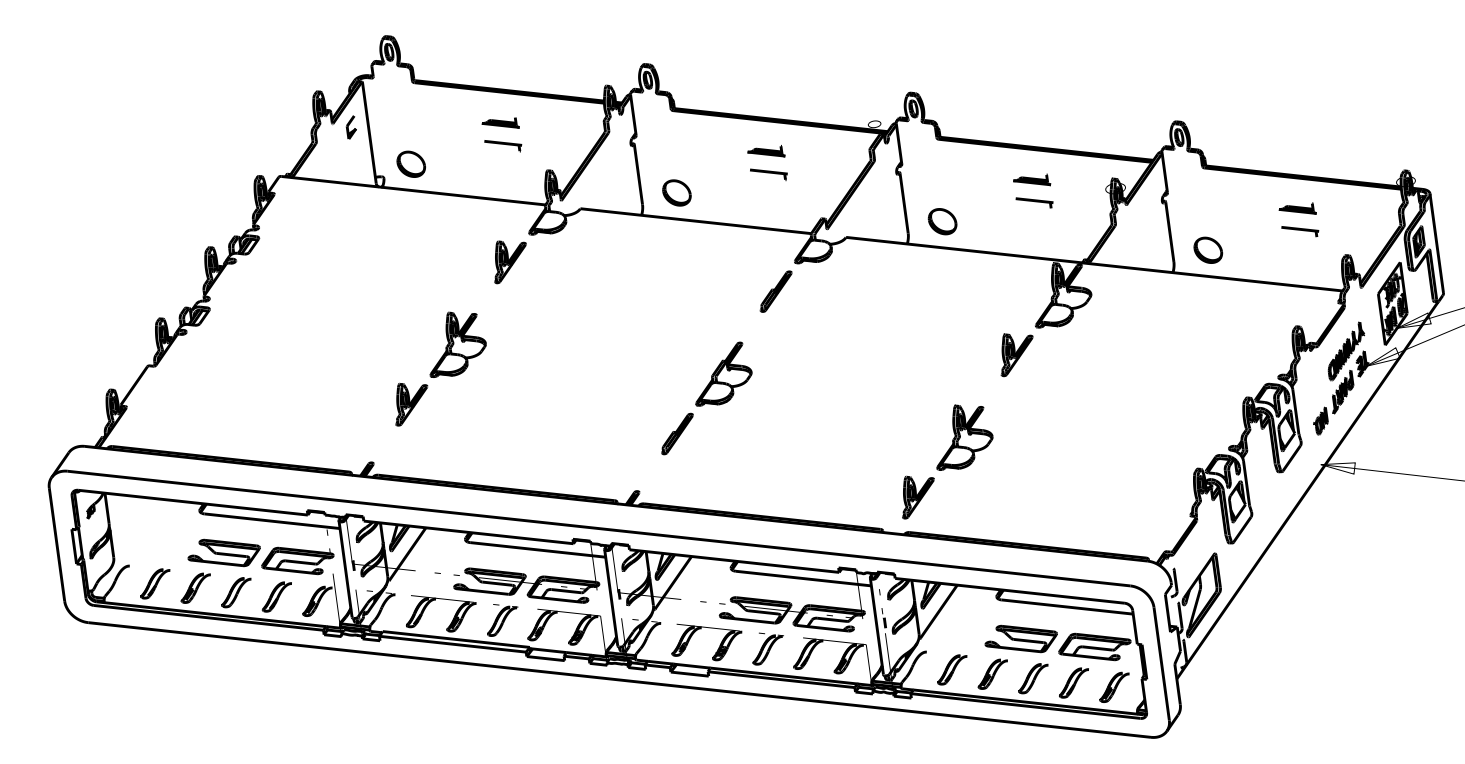


LOC	DIST	REVISIONS			
P	LTN	DESCRIPTION	DATE	DWN	APVD
E		REVISED PER ECR-12-009968	31MAY2012	DZ	AC
F		REVISED PER ECO-13-020244	31DEC2013	ZJ	JY
G		REVISED PER ECO-15-000148	10APR2015	RG	MC

- 1 SURFACE TRACES PERMITTED WITHIN THIS AREA EXCEPT WHERE CAGE STANDOFFS, SHOWN IN DETAIL S, CONTACT PC BOARD.
- 2 PITCH BETWEEN PORTS OF ONE 1X4 CAGE.
- 3 SPACING BETWEEN CAGES ON THE SAME PC BOARD. TO BE SPECIFIED BY CUSTOMER, MUST COMPLY WITH MINIMUM DIMENSIONS SHOWN.
- 4 REFERENCE APPLICATION SPEC 114-13218 FOR RECOMMENDED DRILL HOLE DIAMETER AND PLATING THICKNESS.
- 5 UNPLATED THRU HOLE.
- 6 DATUM AND BASIC DIMENSION ESTABLISHED BY CUSTOMER.
- 7 DATUM -A- IS TOP SURFACE OF THE HOST BOARD.
- 8 DIMENSION C IS THE NOMINAL THICKNESS OF CUSTOMER SUPPLIED PC BOARD. MINIMUM PC BOARD THICKNESS:
 SINGLE SIDED: 1.45mm
 DOUBLE SIDED: 2.2mm PER QSFP
- 9. MATES WITH QSFP MSA COMPATIBLE TRANSCEIVER.
- 10 BASELINE FOR THE DIMENSION IS CENTER OF COMPLIANT PIN HOLE.
- 11 2D BARCODE AND DATE CODE (YYWW) MARKED APPROXIMATELY AS SHOWN.
- 12 REFERENCE APP SPEC 114-13218 FOR GASKET THICKNESS CALCULATION.
- 13 MATERIAL:
 CAGE ASSEMBLY: NICKEL SILVER, 0.25 THICK
 EMI SPRINGS: COPPER ALLOY
 FRONT FLANGE: ZINC ALLOY.
- 14 FINISH:
 EMI SPRINGS: 2um MINIMUM TIN
 FRONT FLANGE: 3um MINIMUM TIN OVER 1.27um MINIMUM NICKEL OVER 5.08um MINIMUM COPPER
- 15 HOLES ARE OPTIONAL WHEN PINS ON CENTRAL DIVIDER ARE REMOVED.



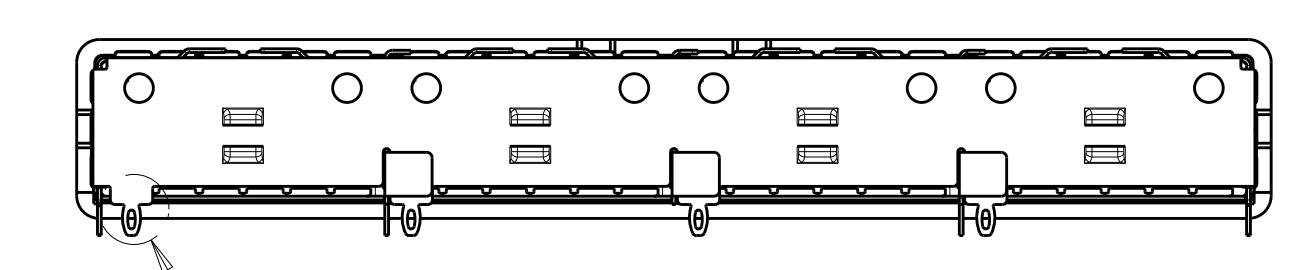
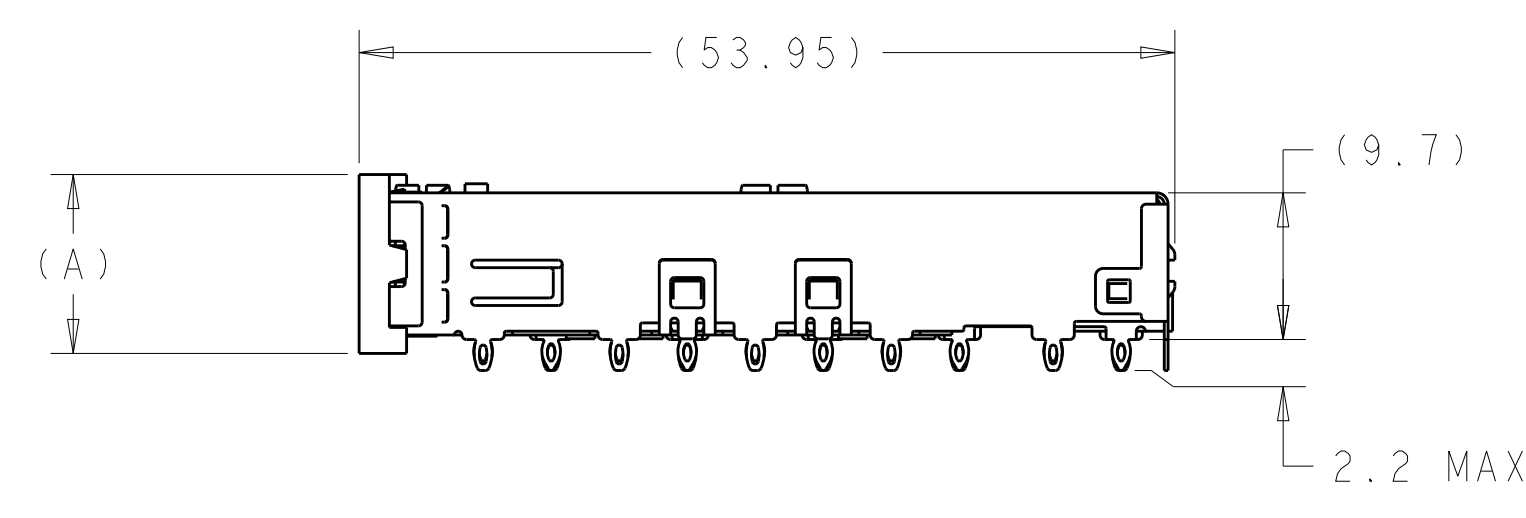
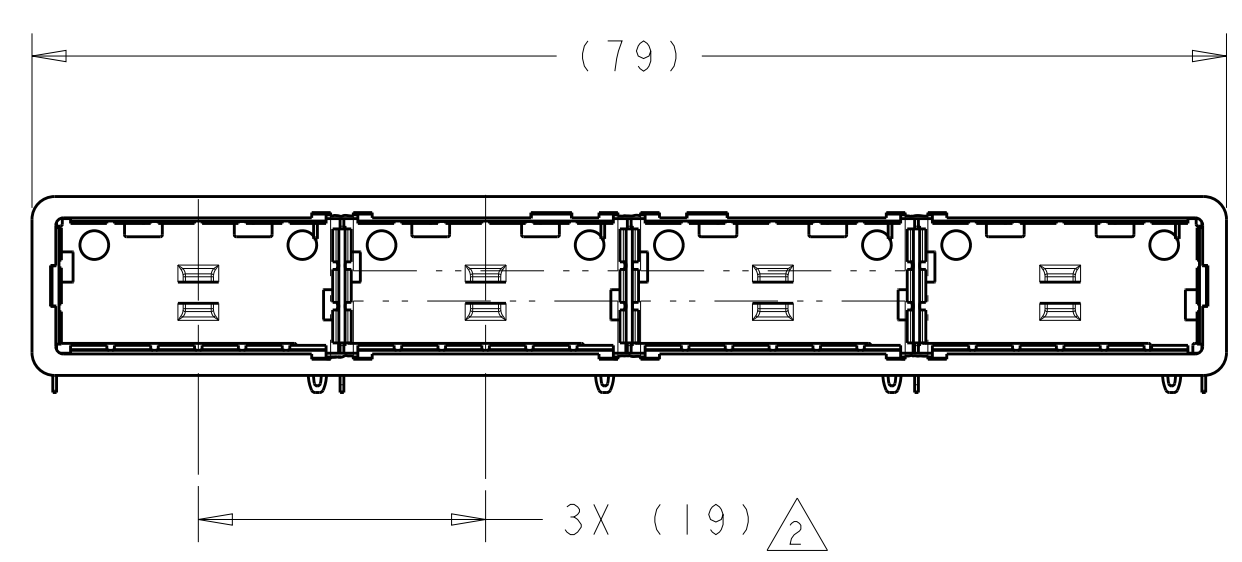
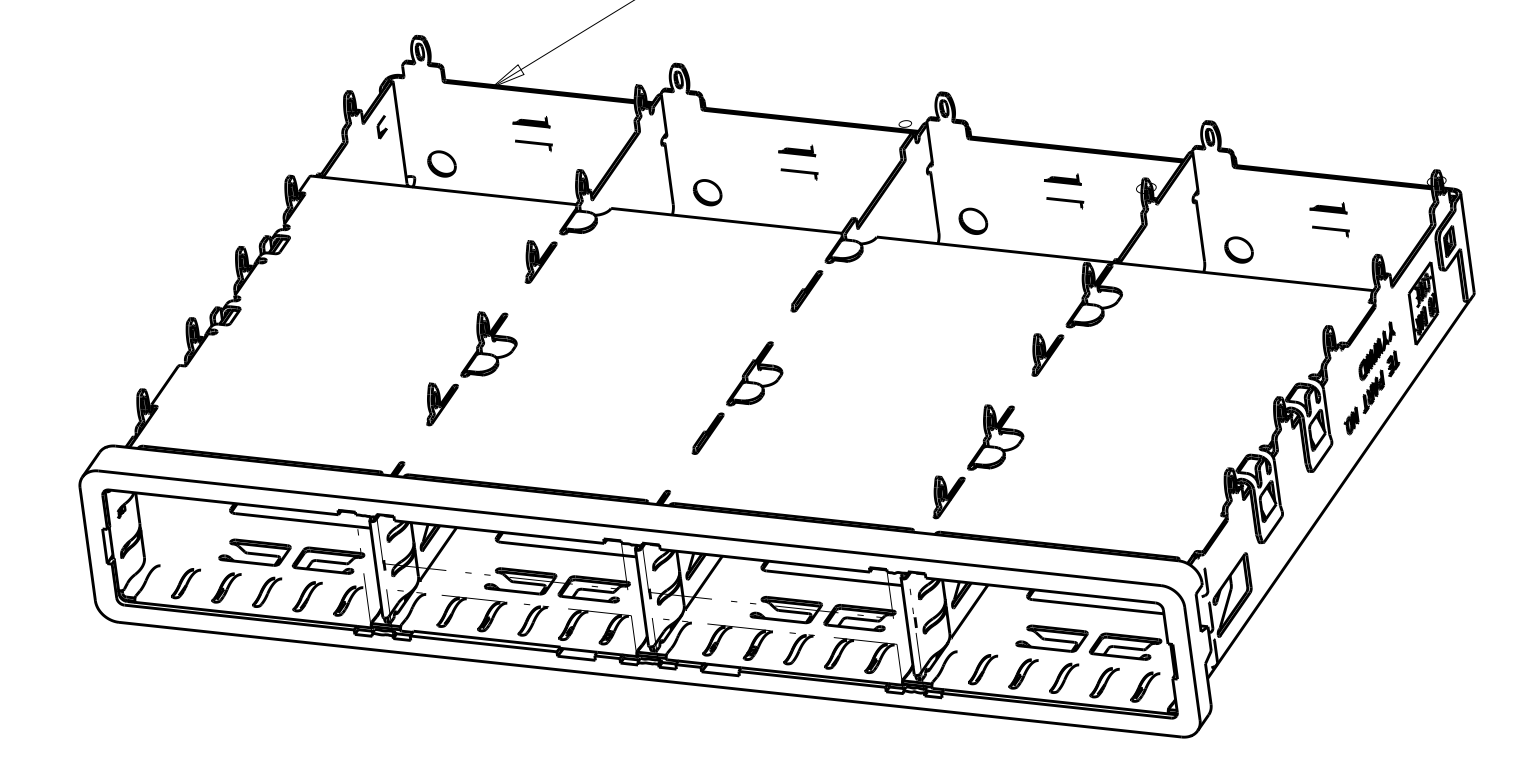
EMI SPRINGS CAGE ASSEMBLY



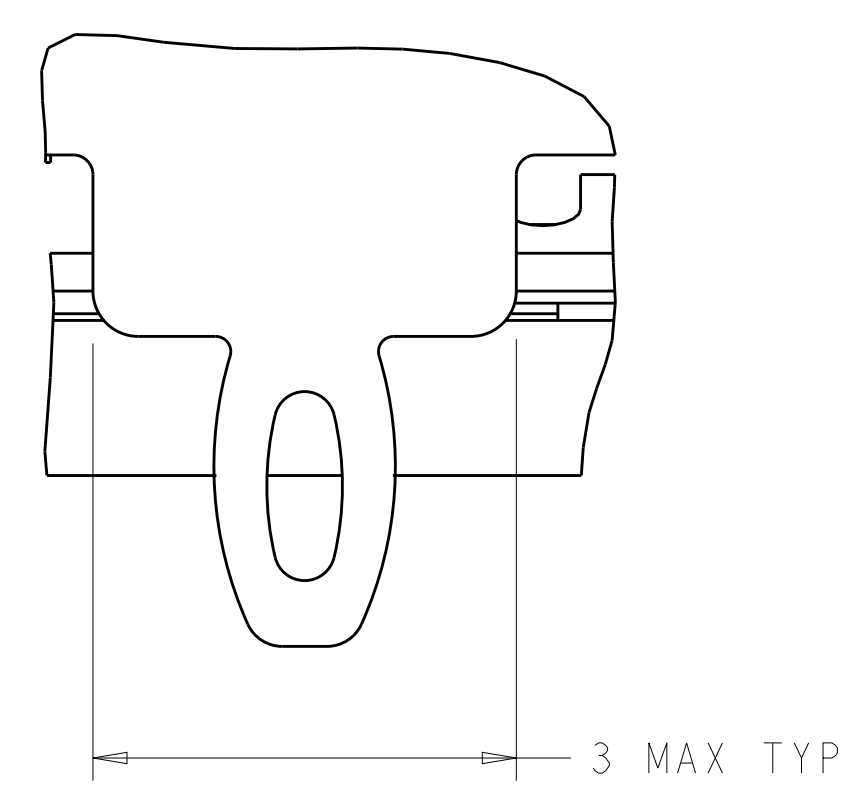
2D BARCODE AND DATE CODE

2007667-1

2007667-5

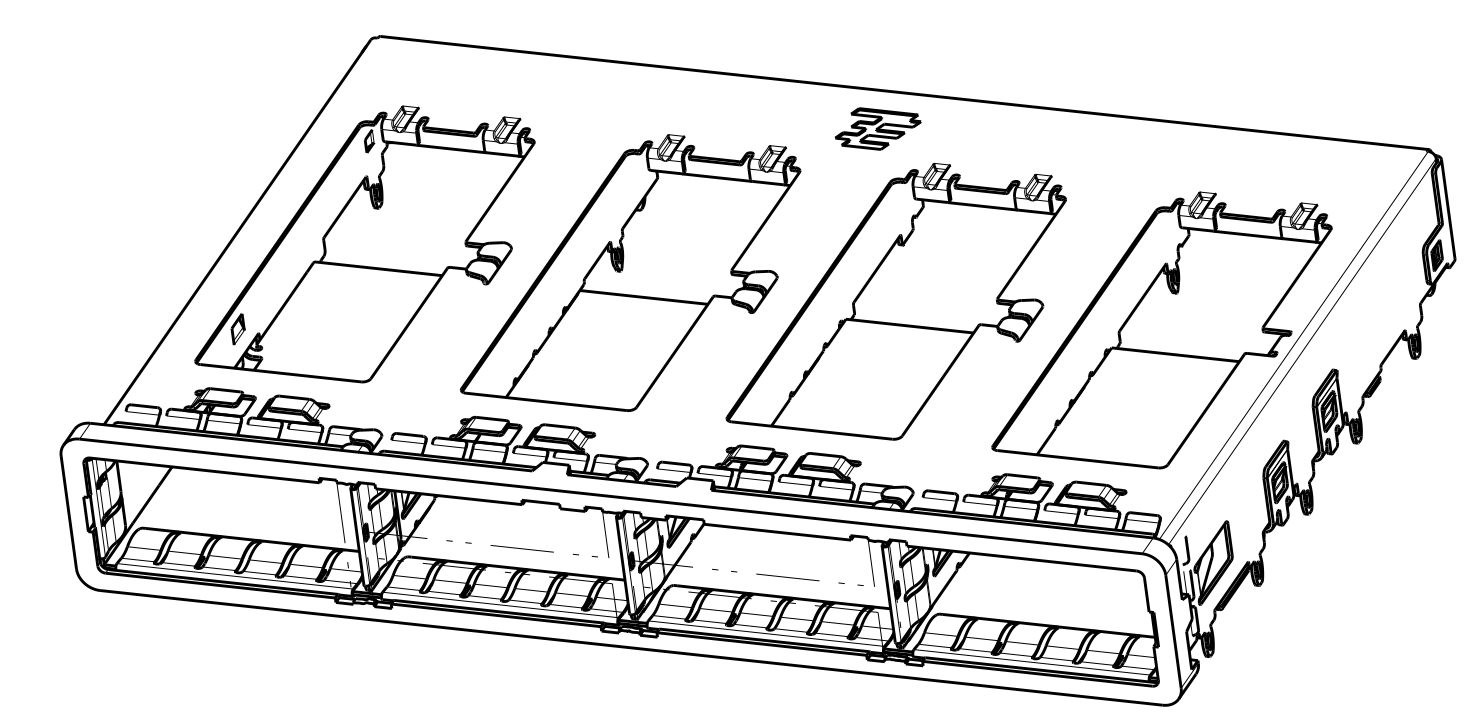
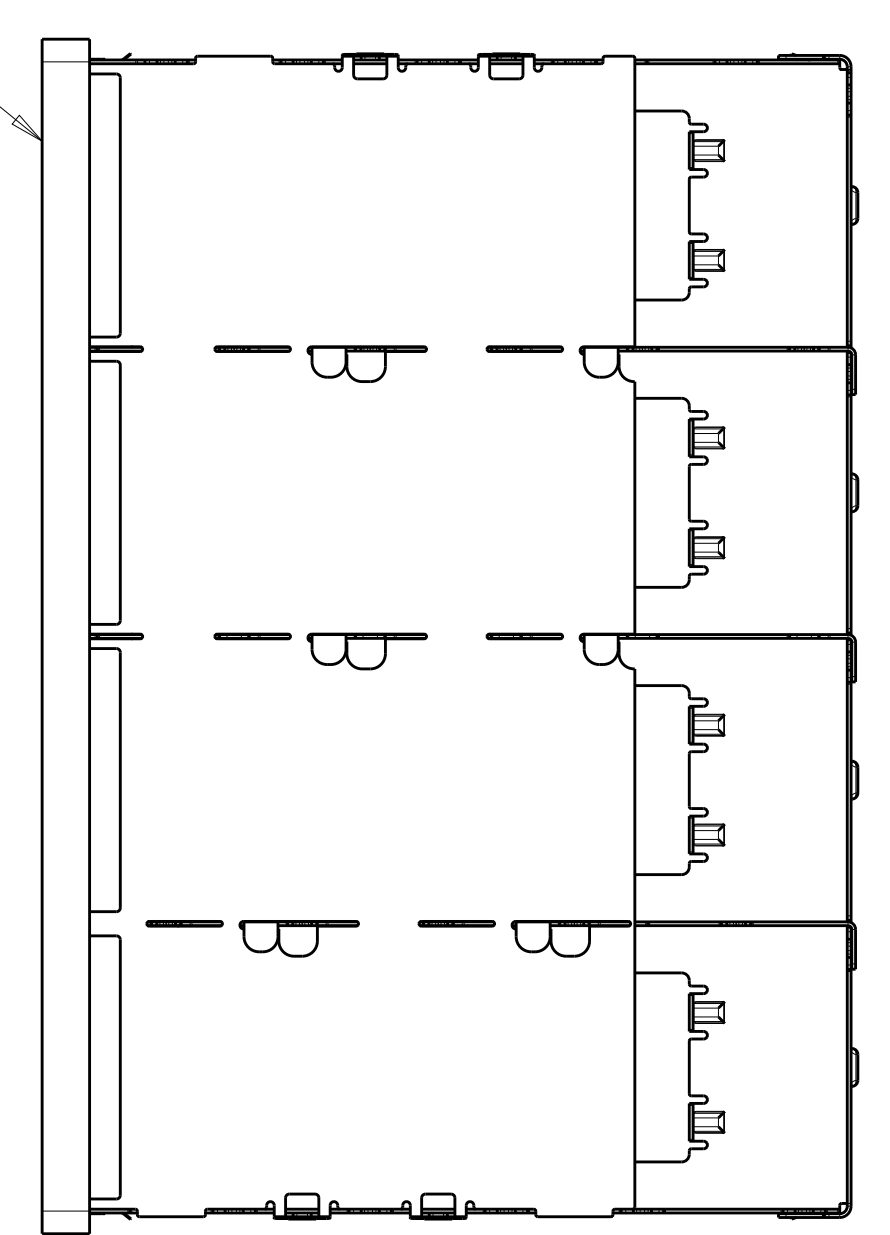


SEE DETAIL S



DETAIL S SCALE 20:1

FRONT FLANGE



13.03	2007667-5
11.83	2007667-3
13.03	2007667-1
DIM A	PART NUMBER

OBSOLETE

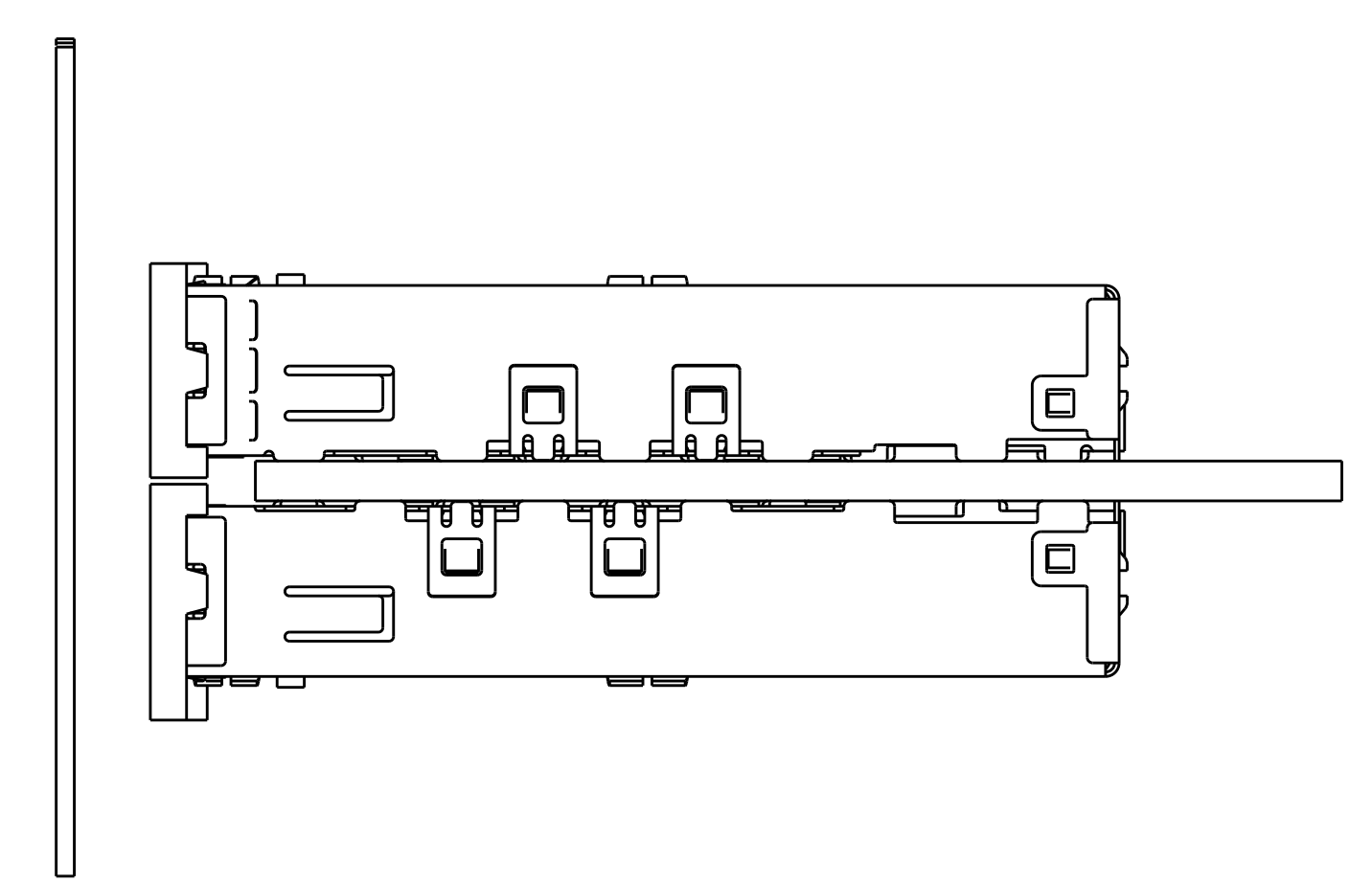
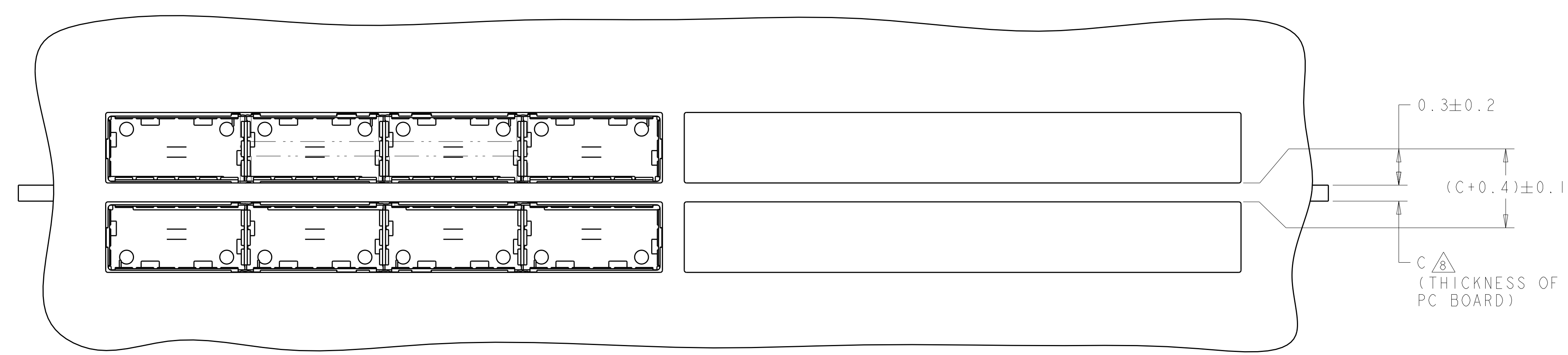
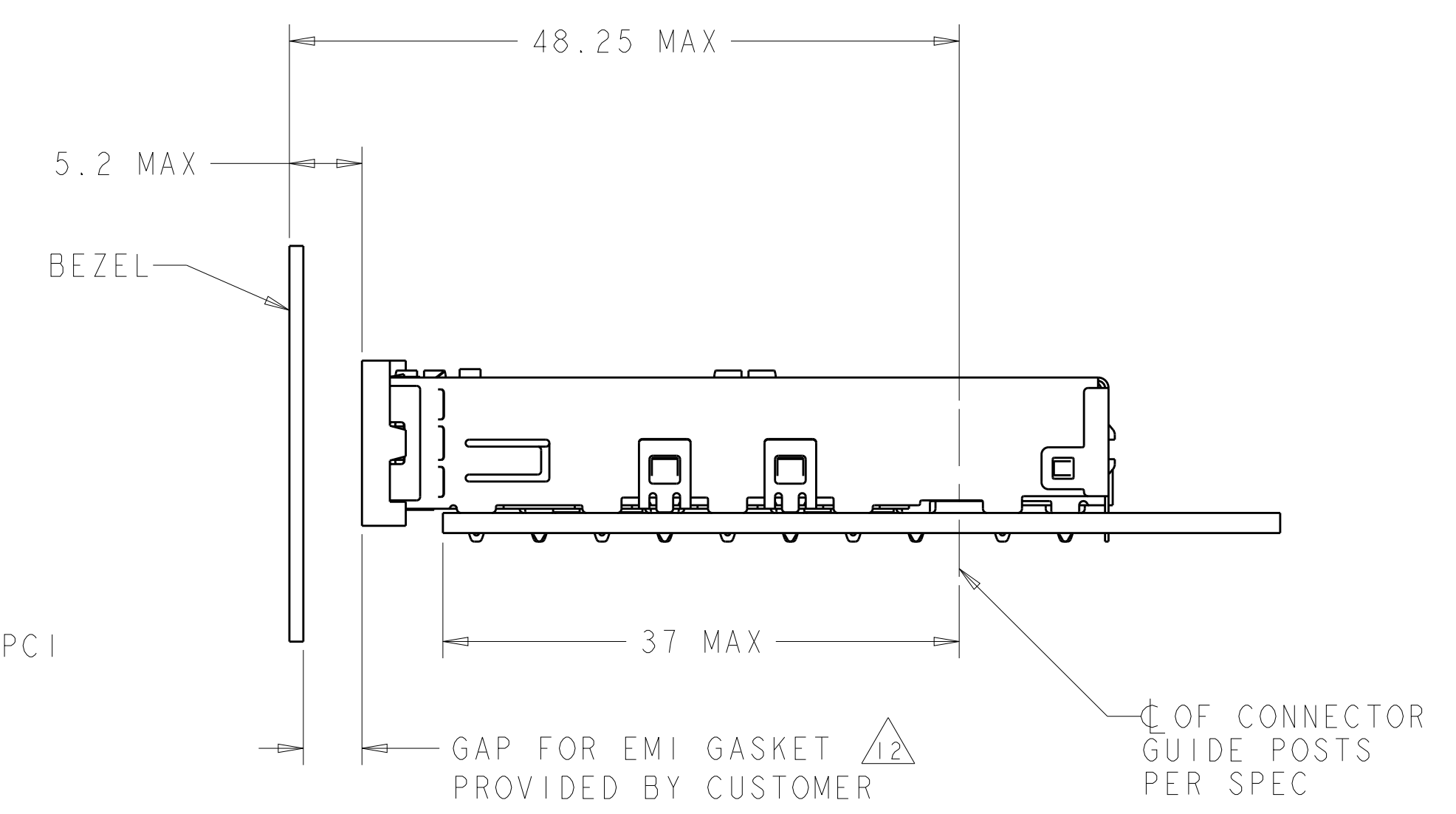
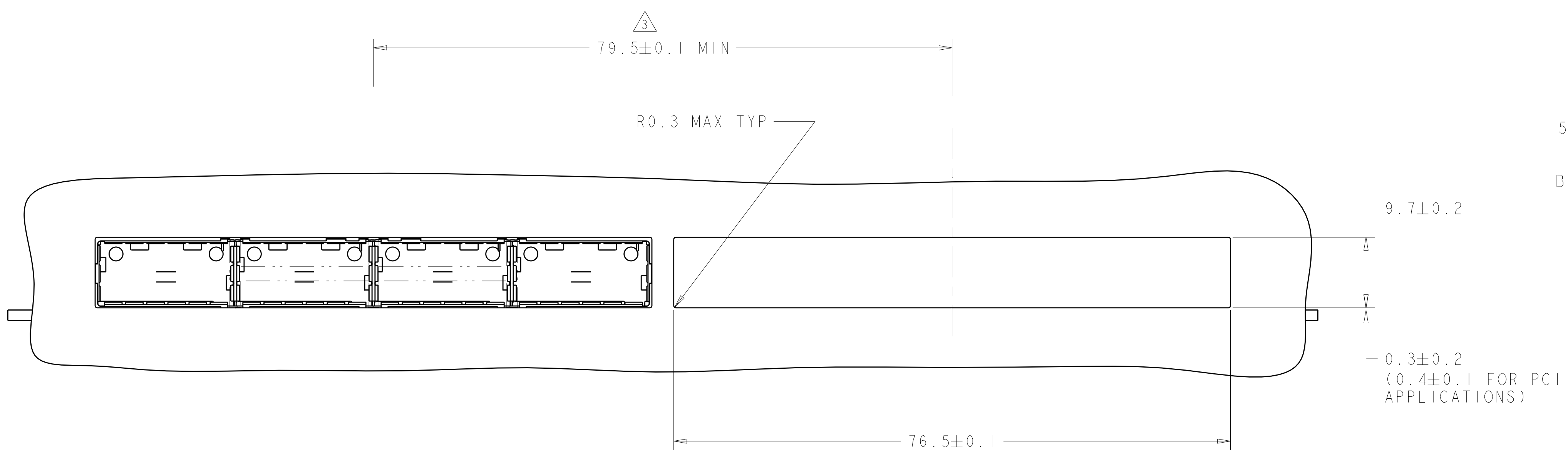
THIS DRAWING IS A CONTROLLED DOCUMENT.

DIMENSIONS:	TOLERANCES UNLESS OTHERWISE SPECIFIED:	DWN	C. VALENTINE	05JUN2008
mm	0 PLC ±	CHK	E. BRIGHT	05JUN2008
	1 PLC ±0.1	APVD	E. BRIGHT	05JUN2008
	2 PLC ±0.1	PRODUCT SPEC		
	3 PLC ±0.013	APPLICATION SPEC		
	4 PLC ±0.0001	114-13218		
	ANGLES ±	SIZE	CAGE CODE	DRAWING NO
MATERIAL	FINISH	WEIGHT	A100779	C=2007667
		Customer Drawing	SCALE	2:1

TE Connectivity
 1X4 CAGE ASSEMBLY, BEHIND BEZEL, QSFP
 SHEET 1 OF 4 REV G

LOC	DIST	REV	DATE	BY	APPD
GP	00				

REVISIONS					
REV	DATE	BY	APPD	DESCRIPTION	DATE
-	-	-	-	SEE SHEET 1	-

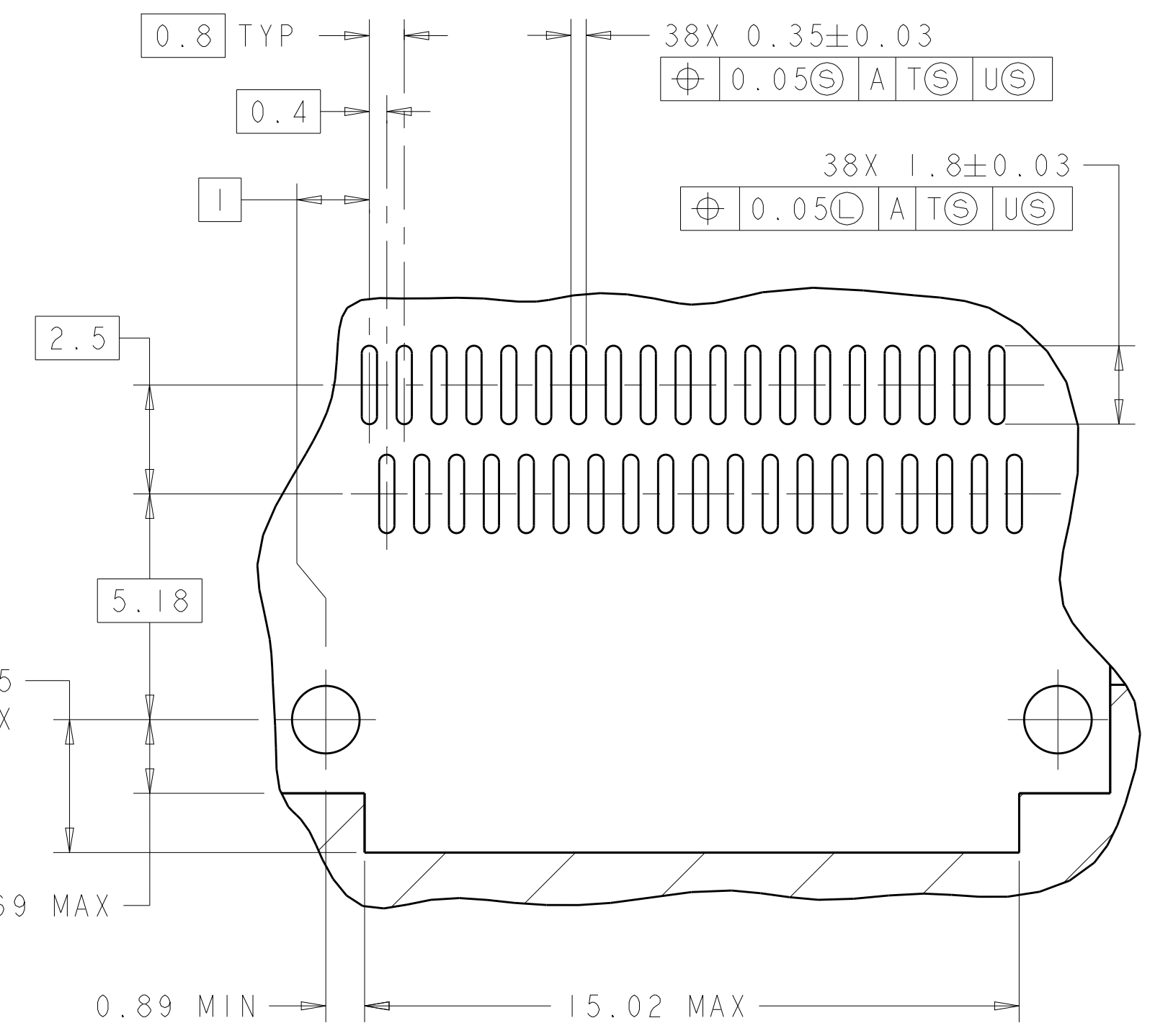
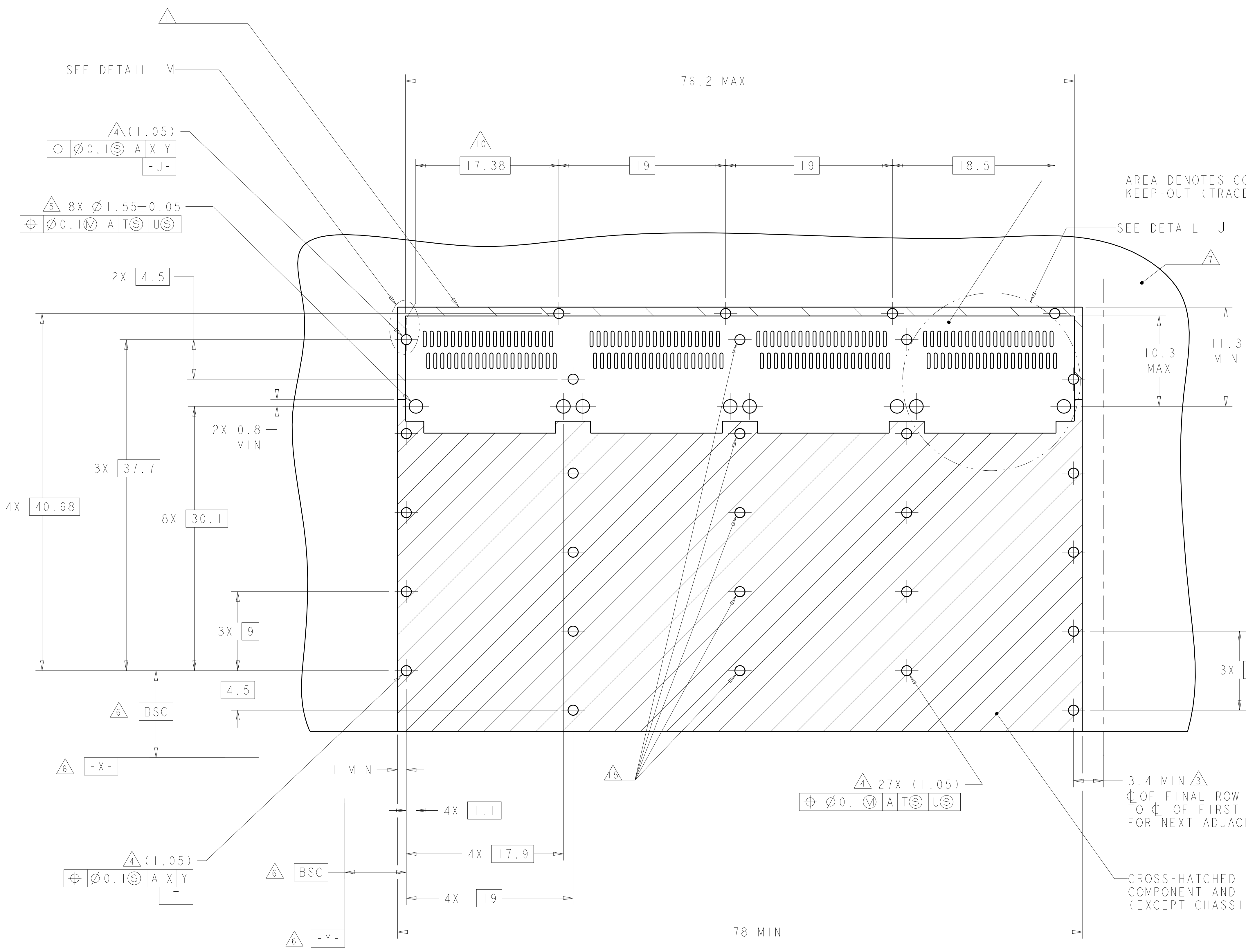
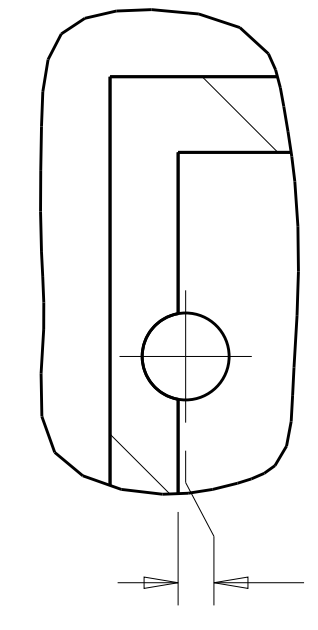


THIS PRODUCT HAS NOT COMPLETED VALIDATION/QUALIFICATION TESTING

THIS DRAWING IS A CONTROLLED DOCUMENT.		OWN: C. VALENTINE 05JUN2008	TE Connectivity
DIMENSIONS: mm		CHK: E. BRIGHT 05JUN2008	
TOLERANCES UNLESS OTHERWISE SPECIFIED:		APVD: F. BRIGHT 05JUN2008	NAME: 1X4 CAGE ASSEMBLY, BEHIND BEZEL, QSFP
0 PLC ±	1 PLC ±0.1	PRODUCT SPEC	SIZE: CAGE CODE DRAWING NO
2 PLC ±0.1	3 PLC ±0.013	108-2286	RESTRICTED TO
4 PLC ±0.0001	ANGLES ±	APPLICATION SPEC	A100779C=2007667
MATERIAL	FINISH	114-13218	WEIGHT
		Customer Drawing	SCALE 2:1 SHEET 2 OF 4 REV G

LOC	DIST	REV	DATE	BY	APPV
GP	00				

DETAIL M
 SCALE 10:1



DETAIL J
 4 PLACES
 SCALE 8:1

RECOMMENDED PC BOARD LAYOUT
 SINGLE SIDE MOUNT CONFIGURATION
 SCALE 4:1

THIS PRODUCT HAS NOT COMPLETED VALIDATION/QUALIFICATION TESTING

AREA DENOTES COMPONENT
 KEEP-OUT (TRACES PERMITTED)

SEE DETAIL J

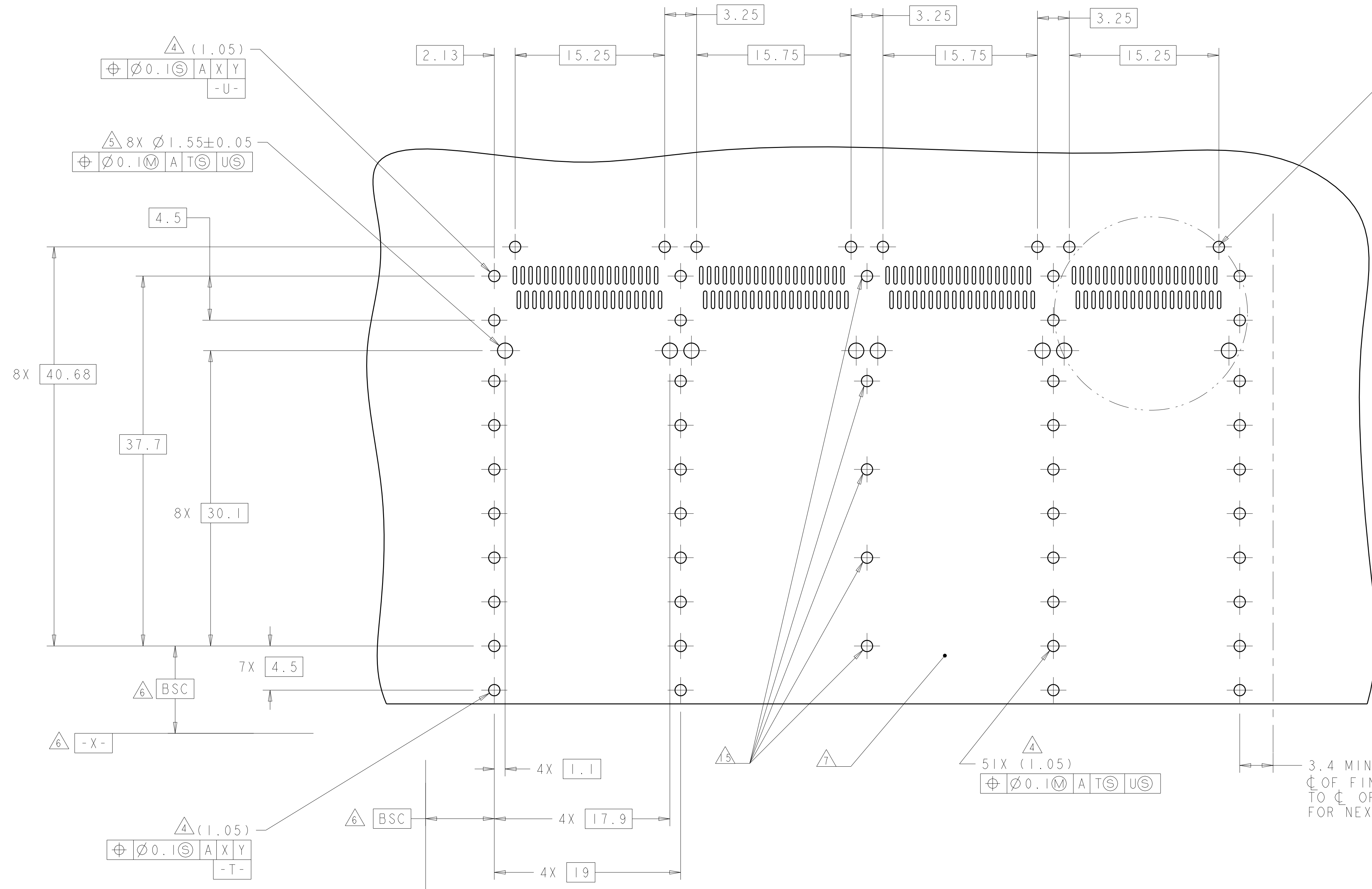
3.4 MIN Δ
 ϕ OF FINAL ROW OF HOLES
 TO ϕ OF FIRST ROW OF HOLES
 FOR NEXT ADJACENT CAGE.

CROSS-HATCHED AREA DENOTES
 COMPONENT AND TRACE KEEP-OUT
 (EXCEPT CHASSIS GROUND)

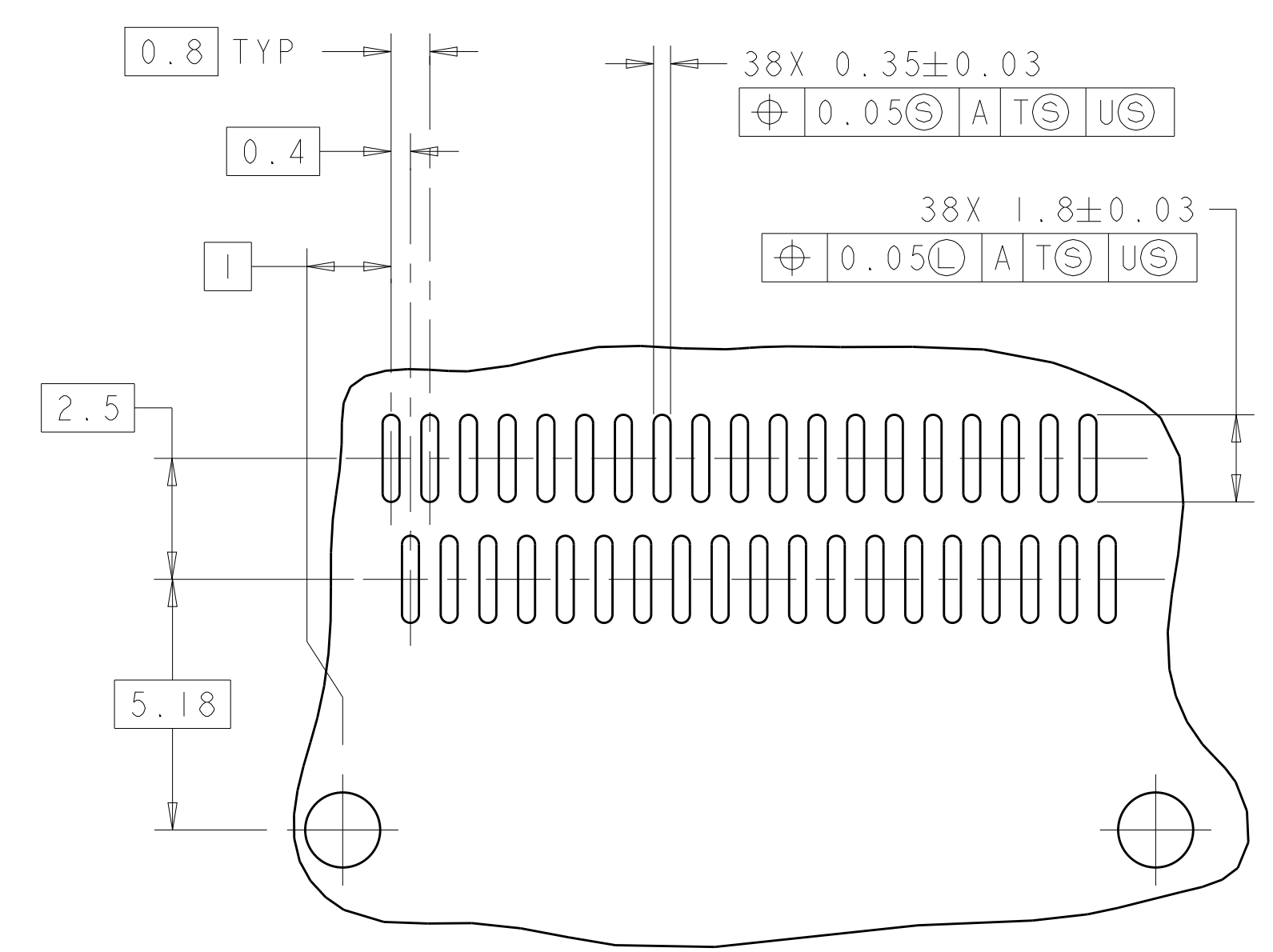
THIS DRAWING IS A CONTROLLED DOCUMENT.		DWN C. VALENTINE	05JUN2008		TE Connectivity
DIMENSIONS:		CHK E. BRIGHT	05JUN2008		NAME
mm	TOLERANCES UNLESS OTHERWISE SPECIFIED:	APVD E. BRIGHT	05JUN2008	PRODUCT SPEC	108-2286
	0 PLC \pm			APPLICATION SPEC	114-13218
	1 PLC ± 0.1			WEIGHT	A100779C=2007667
	2 PLC ± 0.1			Customer Drawing	SCALE 2:1 SHEET 3 OF 4 REV G
	3 PLC ± 0.013				
	4 PLC ± 0.0001				
	ANGLES \pm				
MATERIAL	FINISH				

LOC	DIST	REV	DATE	BY	APPV
GP	00				

REVISIONS			
REV	DATE	BY	APPV
-	-	-	-
SEE SHEET 1			



SEE DETAIL K



DETAIL K
SCALE 8:1

RECOMMENDED PC BOARD LAYOUT
BELLY TO BELLY CONFIGURATION
SEE SHEET 3 FOR COMPONENT AND TRACE KEEP-OUTS
SCALE 4:1

THIS PRODUCT HAS NOT COMPLETED VALIDATION/QUALIFICATION TESTING

THIS DRAWING IS A CONTROLLED DOCUMENT.		OWN C. VALENTINE 05JUN2008	 TE Connectivity
DIMENSIONS: mm		CHK E. BRIGHT 05JUN2008	
TOLERANCES UNLESS OTHERWISE SPECIFIED:		APVD E. BRIGHT 05JUN2008	NAME 1X4 CAGE ASSEMBLY, BEHIND BEZEL, QSFP
0 PLC ±0.1	1 PLC ±0.1	PRODUCT SPEC	SIZE 108-2286
2 PLC ±0.1	3 PLC ±0.013	APPLICATION SPEC	RESTRICTED TO
4 PLC ±0.0001	ANGLES ±0.0001	114-13218	SCALE 2:1
MATERIAL	FINISH	WEIGHT	SHEET 4 OF 4
Customer Drawing		A100779C=2007667	REV G