

1

2

3

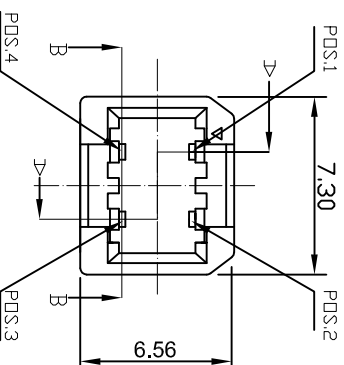
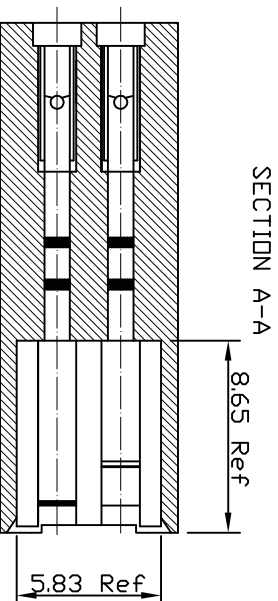
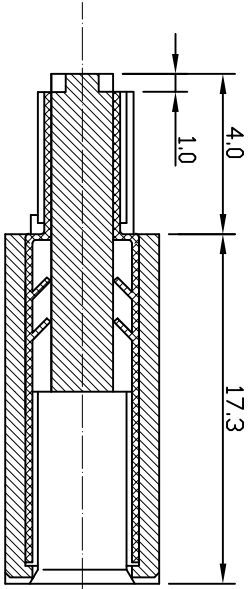
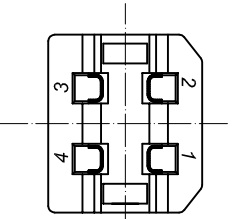
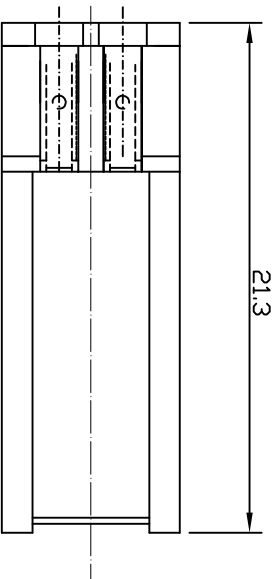
4

5

6

7

⑤ USB2.0 COMPLIANT



NOTE:
 1. MATERIALS:
 INSULATION: PBT 30%GLASS FILLED UL94V-0
 COLOR: WHITE
 COLOR: WHITE
 CONTACT: COPPER ALLOY PREPLATEIVE 5µ" GOLD PLATED

SECTION B-B

SECTION A-A

Scale	1:1	⑥	Update contact plated information	10.02.2013	Ray		Date	Name	Customer-No.
-------	-----	---	-----------------------------------	------------	-----	--	------	------	--------------

TOLERANCE	⑦	Update	27.08.2013	Winnie	Drawn	20.10.2004	Hellwig		ASSMANN WSW-No.
-----------	---	--------	------------	--------	-------	------------	---------	--	-----------------

.XX	⑧	Add assembly instructions	11.06.2012	Lucas	Approved	10.02.2014	Winnie		A-USBPB-N
-----	---	---------------------------	------------	-------	----------	------------	--------	--	-----------

.X	⑨	Add application cable OD.	13.03.2012	Lucas					Drawing-No.
----	---	---------------------------	------------	-------	--	--	--	--	-------------

XX.	⑩	Update	14.07.2009	Rate					ASS 1518C CO
-----	---	--------	------------	------	--	--	--	--	--------------

DIM	⑪	Drawn	20.10.2004	Hellwig					Replace
-----	---	-------	------------	---------	--	--	--	--	---------

Angle	⑫								Sheet
-------	---	--	--	--	--	--	--	--	-------

RoHS compliant

1

2

3

4

5

6

7

A
B
C
D
E
F
G
H

1

2

3

4

5

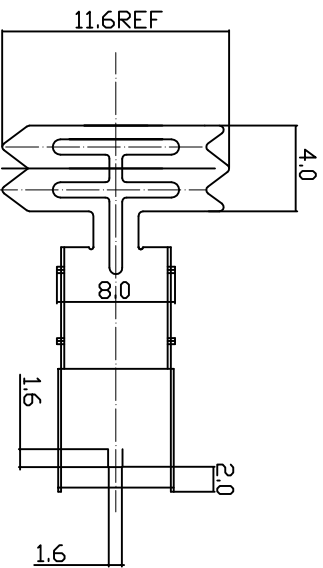
6

7

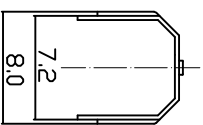
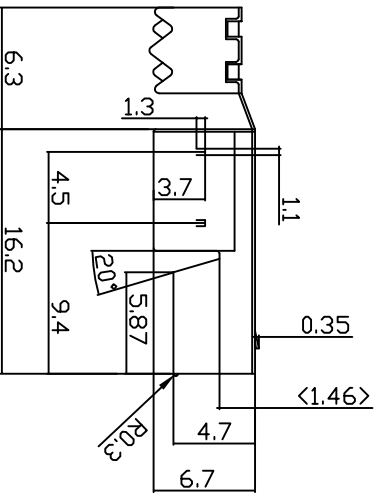
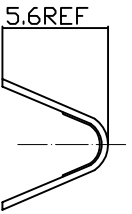
A

A

NOTE:
 1.0.MATERIALS:
 1.1.COLD ROLL STEEL, t=0.35mm
 2.0.FINISHES:
 2.1.5.0um Min. BRIGHT TIN/LEAD(9:1) OVER 5.0um Min. COPPER
 2.2.3.0um-5.0um NICKEL OVER 5.0um Min. COPPER
 2.3.1.5u" Min. Au+80-150u" NICKEL +100u"Min. COPPER
 2.4.3.0um-5.0um NICKEL OVER 5.0um Min. COPPER(SPECIAL PLATED)
 © 3.0.APPLICATION CABLE SPEC:



UL CSA Type	AWG Signal wires Power wires	Jackel OD.	Cable length(max.)
UL GM	28AWG x 11P, 28AWG x 2Cores	4.2mm	0.81m
UL FT4	28AWG x 11P, 26AWG x 2Cores	4.4mm	1.31m
	28AWG x 11P, 24AWG x 2Cores	4.7mm	2.08m
	28AWG x 11P, 22AWG x 2Cores	5.0mm	3.33m
	28AWG x 11P, 20AWG x 2Cores	5.0mm	5.00m



A

B

B

C

C

D

D

E

E

F

F

G

G

H

H

Scale	1:1	⑥	Update contact plated Information	10.02.2013	Ray
TOLERANCE		⑥	Update	27.08.2013	Winnie
.XX	±0.10	④	Add assembly instructions	11.06.2012	Lucas
.X	±0.20	③	Add application cable OD.	13.03.2012	Lucas
X.	±0.50	②	Update	14.07.2009	Rale
XX.	±1	①	Drawn	20.10.2004	Hellwig
DIM	TOL				
Angle	TOL		Modification		

RoHS compliant

Customer-No.

Name

Date

Drawn

Ray

⑥

Scale

1:1

1

ASSMANN WSW-No. A-USBPB-N

Drawing-No.

ASS 1518C CO rev06

ASSMANN WSW/ components

Replace

Sheet 2 / 4

1

2

3

4

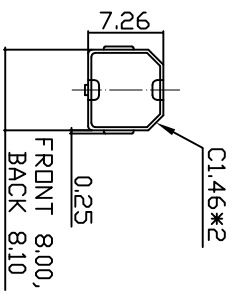
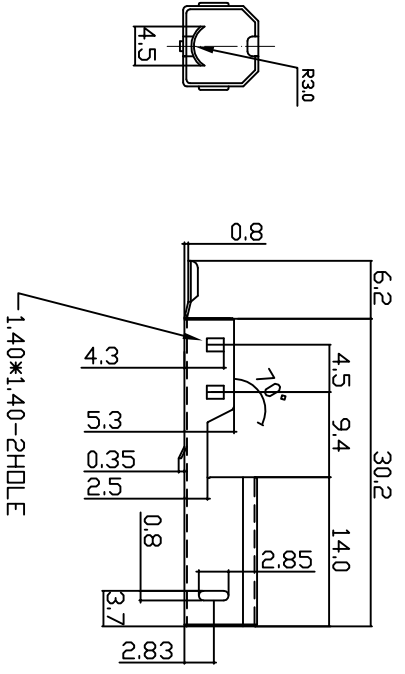
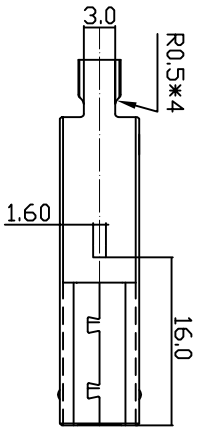
5

6

7

H

1	2	3	4	5	6	7	A
1	2	3	4	5	6	7	A
1	2	3	4	5	6	7	B
1	2	3	4	5	6	7	C
1	2	3	4	5	6	7	D
1	2	3	4	5	6	7	E
1	2	3	4	5	6	7	F
1	2	3	4	5	6	7	G
1	2	3	4	5	6	7	H



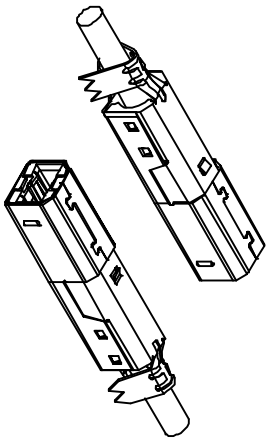
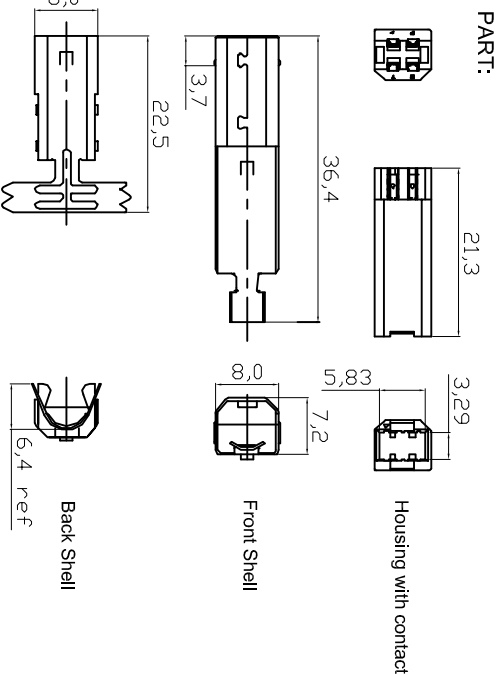
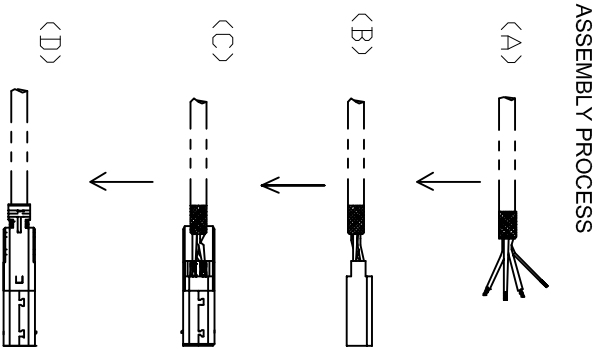
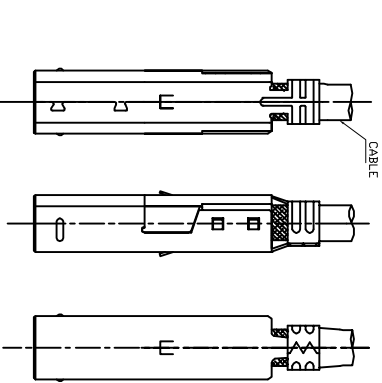
NOTE:
 1.0.MATERIALS:
 1.1.COLD ROLL STEEL. t=0.35mm
 2.0.FINISHES:
 2.1.5.0um Min.BRIGHT TIN/LEAD(9:1) OVER 5.0um Min.COPPER
 2.2.3.0um-5.0um NICKEL OVER 5.0um Min.COPPER
 2.3.1.5u" Min.Au+80~150U".NICKEL+100U"Min.COPPER
 2.4.3.0um-5.0um NICKEL OVER 5.0um Min.COPPER(SPECIAL PLATED)
 3.0.OTHER:

Scale	1:1	⑥	Update contact plated information	10.02.2013	Ray		Date	Name	Customer-No.
TOLERANCE		⑤	Update	27.08.2013	Winnie	Drawn	20.10.2004	Hellwig	ASSMANN WSW-No.
.XX	±0.10	④	Add assembly instructions	11.06.2012	Lucas	Approved	10.02.2014	Winnie	A-USBPB-N
.X	±0.20	③	Add application cable OD.	13.03.2012	Lucas				Drawing-No.
X.	±0.50	②	Update	14.07.2009	Rate				ASS 1518C CO
XX.	±1	①	Drawn	20.10.2004	Hellwig				Replace
DIM	TOL								Sheet
Angle	TOL								3 / 4

RoHS compliant



1	2	3	4	5	6	7
A	B	C	D	E	F	G
B	C	D	E	F	G	H
C	D	E	F	G	H	A
D	E	F	G	H	A	B
E	F	G	H	A	B	C
F	G	H	A	B	C	D
G	H	A	B	C	D	E
H	A	B	C	D	E	F



NOTES:
 Rating: 30VAC (R.M.S)
 Voltage: 30VAC (R.M.S)
 Current: 1,5 AMPERE MINIMUM PER CONTACT AT 30°C T-RISE
 TEMPERATURE: -55°C TO +85°C UNLESS LIMITED BY CABLE OR
 OVERMOLD (-40°C TO +60°C STORAGE: 0°C TO +40 °C (OPERATING)
 ELECTRIC RESISTANCE: 30 MILLIOHMS MAXIMUM INITIAL
 INSULATION RESISTANCE: 1000 MEGOHMS MINIMUM
 DIELECTRIC WITHSTANDING VOLTAGE: 500VAC AT SEA LEVEL
 CAPACITANCE: 2 PICOFARADS MAXIMUM AT 1KHZ
 MODIFICATION SEAM DIRECTION CIRCUMGYRATE: 180 DEGREE

Scale	1:1	⑥	Update contact plated Information	10.02.2013	Ray		Date	Name
TOLERANCE	.XX	⑤	Update	27.08.2013	Winnie	Drawn	20.10.2004	Hellwig
	.X	④	Add assembly instructions	11.06.2012	Lucas	Approved	10.02.2014	Winnie
X.	±0.15	③	Add application cable OD.	13.03.2012	Lucas			
DIM	TOL	②	Update	14.07.2009	Rale			
X°	±3°	①	Drawn	20.10.2004	Hellwig			
X°	±1,0°							
Angle	TOL							

RoHS compliant



Customer-No.
 ASSMANN WSW-No.
A-USBPB-N
 Drawing-No.
ASS 1518C CO
 Replace
 rev06
 Sheet
 4 / 4