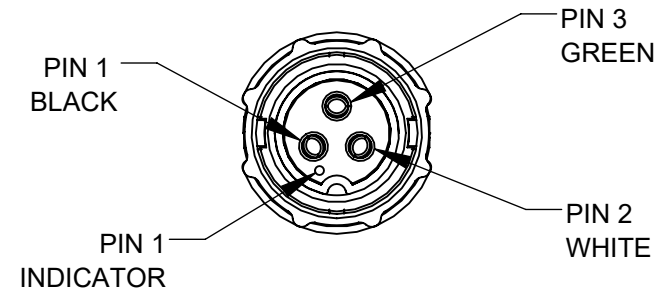


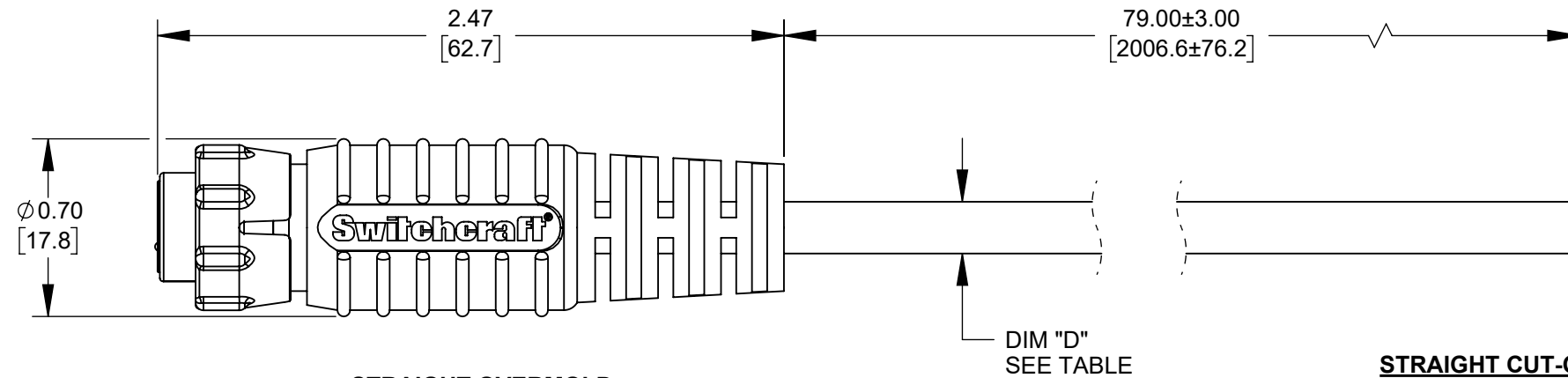
**CAEN3C2F1607990**  
2-PIN FEMALE

2 CONDUCTOR  
16 AWG CABLE  
BLACK PVC



**CAEN3C3F1607990**  
3-PIN FEMALE

3 CONDUCTOR  
16 AWG CABLE  
BLACK PVC



**STRAIGHT OVERMOLD**  
**FEMALE EN3C - 16GA CONTACTS**  
OVERMOLD - THERMOPLASTIC, BLACK  
CONNECTOR - THERMOPLASTIC, BLACK  
CONTACTS - COPPER ALLOY, GOLD PLATED

PART NUMBER	NUMBER OF CONTACTS	DIM "D" CABLE DIAMETER
CAEN3C2F1607990	2	Ø0.204 [5.18] REF
CAEN3C3F1607990	3	Ø0.275 [6.99] REF

**CUSTOMER DRAWING**

**NOTES:**

1. THIS PRODUCT IS RoHS COMPLIANT.

REV	ECO NUMBER	DATE	BY	APVD
A	28435	10-14-21	PC	TJK
REVISIONS				

UNLESS OTHERWISE SPECIFIED

- 1. ALL DIMENSIONS IN INCHES [mm]
- TWO PLACE DECIMALS ±0.02 [0.5]
- THREE PLACE DECIMALS ±0.005 [0.13]

DO NOT SCALE DRAWING

THIS DRAWING DESCRIBES A DESIGN CONSIDERED PROPRIETARY IN NATURE, DEVELOPED AND MANUFACTURED BY SWITCHCRAFT INC. AND IS RELEASED ON A CONFIDENTIAL BASIS FOR IDENTIFICATION PURPOSES ONLY.									
SIZE	WIDTH	MULT	LBS/M	TEMPER					
FINISH					MATERIAL				
SPEC No.					SPEC No.				
FIRST USED ON				SCALE 3:2					
DATE DRAWN	BY	CHKD	APVD	<b>Switchcraft®</b>					
8-27-21	CC	CC	TJK						
				SHEET 1 OF 1					
NAME				PART No.			REV		
FEMALE EN3C OVERMOLDED TO 16 AWG CABLE, SCO				CAEN3C_F1607990			A		

SolidWorks CAD File **B**