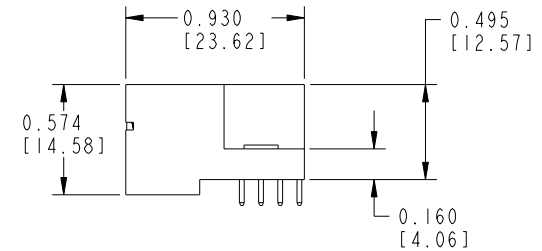
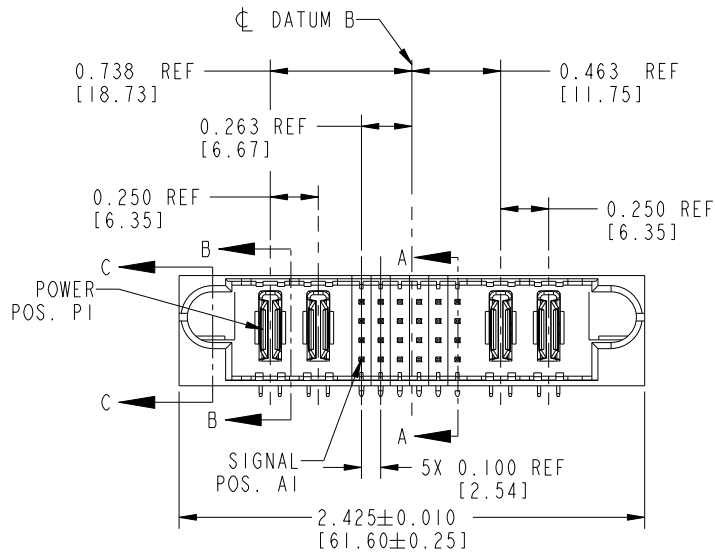
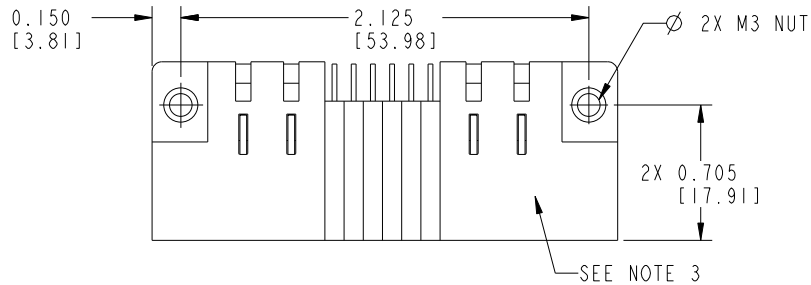
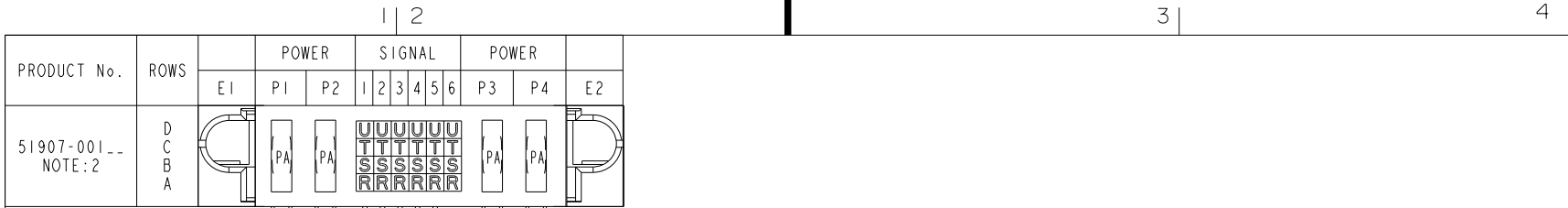


Tous droits strictement réservés. Reproduction ou communication a des tiers interdite sous quelque forme que ce soit sans autorisation écrite du propriétaire. Propriété de c FCI. Droits de reproduction FCI.

All rights strictly reserved. Reproduction or issue to third parties in any form whatever is not permitted without written authority from the proprietor. Property of FCI. Copyright FCI.



CODE	DIM "M" MATING LENGTH	CONTACT TYPE
R	0.270 [6.86]	SIGNAL
S	0.270 [6.86]	SIGNAL
T	0.270 [6.86]	SIGNAL
U	0.270 [6.86]	SIGNAL
PA	N/A [N/A]	POWER

NOTE 1				tolerances unless otherwise specified	
ltr	ecn no.	dr	date	linear	.XX±.01/0.X±0.3
A	V03-0302	TAB	07/14/03		.XXY±.005/0.XX±0.13
B	DG05-0353	CS	09/23/05		.XXX±.0020/0.XXX±0.051
C	DG06-0005	JMG	01/06/06	angles	0°±2°
D	DG08-0266	W D	09/22/08	dr	T. BRUNGARD 07/14/03
				engr	M. MOSTOLLER 07/14/03
				chr	M. MOSTOLLER 07/14/03
				appd	M. MOSTOLLER 07/14/03
sheet index	revision sheet	D 1	D 2	D 3	

CUSTOMER COPY		FCI	
www.fciconnect.com		title	
projection		2P +24S +2P	
INCH/MM		RIGHT ANGLE SOLDER HEADER	
scale 1:1		product family	PwrBlade
		size	dwg no
		A	51907-001
		code	213
		sheet	1 OF 3

B

B

1 | 2

Pro/E

PDM: Rev: D

STATUS: Released

Printed: Dec 20, 2010

code code 22526

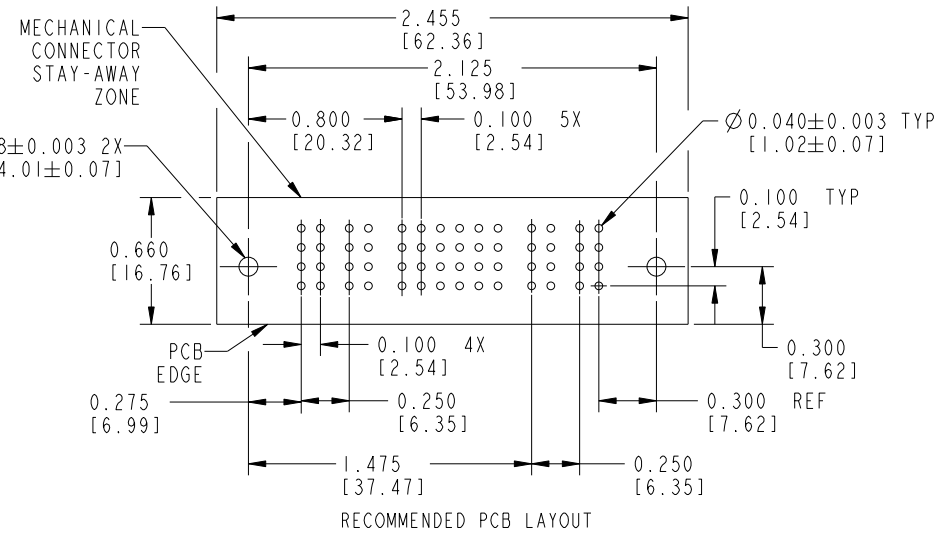
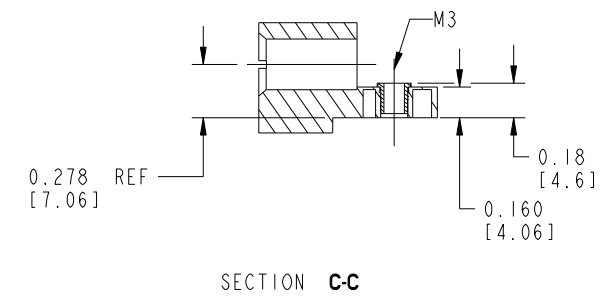
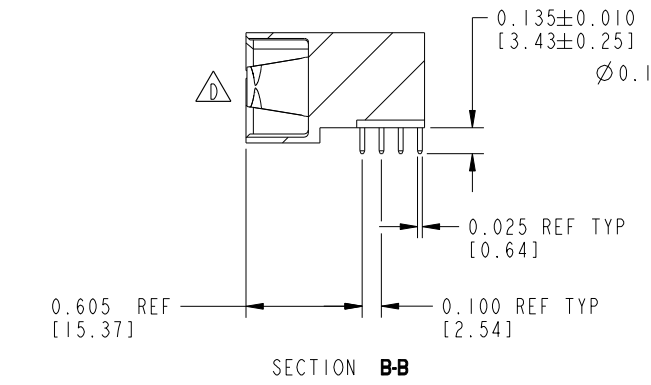
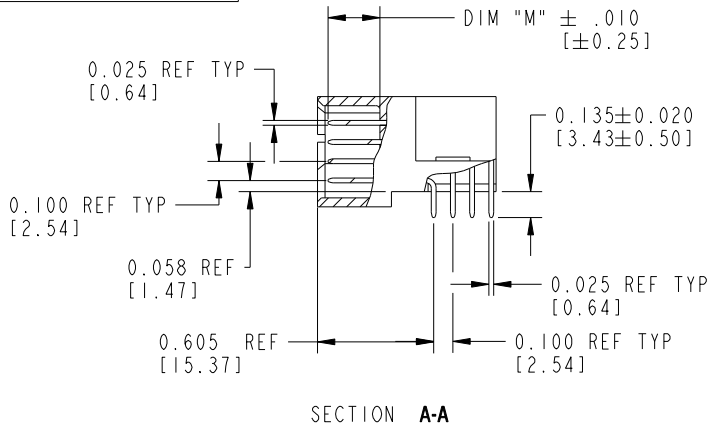
4

Tous droits strictement réservés. Reproduction ou communication a des tiers interdite sous quelque forme que ce soit sans autorisation écrite du propriétaire. Propriété de c FCI. Droits de reproduction FCI.

All rights strictly reserved. Reproduction or issue to third parties in any form whatever is not permitted without written authority from the proprietor. Property of FCI. Copyright FCI.



PRODUCT NUMBER
51907-001--
NOTE:2



mat'l code				NOTE 1		tolerances unless otherwise specified		CUSTOMER COPY		FCI www.fciconnect.com	
lfr	ecn no.	dr	date	linear	.XX±.01/0.X±0.3	projection	title		2P +24S +2P		
D				angles	.XXY±.005/0.XX±0.13	INCH/MM	RIGHT ANGLE SOLDER HEADER		product family		
				dr	.XXX±.0020/0.XXX±0.051	scale	PwrBlade		code		
				enr	0°±2°	1:1	size		213		
				chr	T. BRUNGARD 07/14/03		dwg no		sheet		
				appd	M. MOSTOLLER 07/14/03		51907-001		2		
					M. MOSTOLLER 07/14/03						
sheet index	revision sheet										

Pro/E

PDM: Rev: D

STATUS: Released

Printed: Dec 20, 2010

cage code 22526

Tous droits strictement réservés. Reproduction ou communication a des tiers interdite sous quelque forme que ce soit sans autorisation écrite du propriétaire. Propriété de c FCI. Droits de reproduction FCI.



All rights strictly reserved. Reproduction or issue to third parties in any form whatever is not permitted without written authority from the proprietor. Property of FCI. Copyright FCI.

1 | 2

3 |

4

PRODUCT NUMBER
51907-001--
NOTE:2

CONNECTOR NOTES:

- ① HOUSING MATERIAL: UL 94 V-0 GLASS FILLED HIGH TEMP THERMOPLASTIC
POWER CONTACT MATERIAL: COPPER ALLOY
SIGNAL CONTACT MATERIAL: COPPER ALLOY
M3 NUT MATERIAL: BRASS ALLOY
- ⚠ 2. SEE ITEM 1 & 2 IN PRINT 10064183 FOR PLATING SPEC OF 51907-001 AND 51907-001LF RESPECTIVELY.
- 3. "MANUFACTURER'S" NAME, P/N, AND DATE CODE TO APPEAR ON THIS SURFACE
- 4. PRODUCT SPECIFICATION GS-12-149

PCB NOTES:

- 5. ALL DIMENSIONS ARE BASIC UNLESS OTHERWISE SPECIFIED.
- 6. ALL THROUGH HOLES ARE LOCATED WITH A TRUE POSITION OF 0.004 [0.10]
- 7. ALL HOLE DIAMETERS ARE FINISHED HOLE SIZE
- 8. $\varnothing 0.158[4.01]$ THROUGH HOLES ARE UNPLATED.
- 9. $\varnothing 0.0453 \pm 0.0010$ [1.151 ± 0.025] DRILLED HOLES PLATED WITH 0.0003 [0.008] MIN SnPb OVER 0.001 [0.03] TO 0.003 [0.08] Cu PLATING TO ACHIEVE A $\varnothing 0.040 \pm 0.003$ [1.02 ± 0.07] HOLE.
- 10. A \triangle SYMBOL WILL BE NEXT TO ANY DIMENSION, VIEW, OR NOTE WHICH HAS BEEN MODIFIED WITH THE CURRENT DRAWING REVISION.

CONFIDENTIAL

mat'l code				SEE NOTES		tolerances unless otherwise specified		CUSTOMER		FCJ www.fciconnect.com	
ltr	ecn no.	dr	date	linear	projection	COPY		title 2P +24S +2P			
D						angles	INCH/MM		RIGHT ANGLE SOLDER HEADER		
				dr	T. BRUNGARD	07/14/03	product family PwrBlade		code 213		
				enrg	M. MOSTOLLER	07/14/03	size	dwg no	sheet 3		
				chr	M. MOSTOLLER	07/14/03	scale 1:1		A 51907-001		
				appd	M. MOSTOLLER	07/14/03					
sheet index	revision sheet										

1 | 2

Pro/E

PDM: Rev:D

STATUS: Released

Printed: Dec 20, 2010

A

A

B

B

cage code 22526

4