

CUSTOMER PRINT

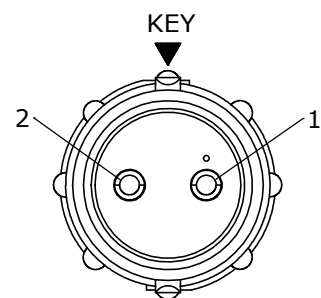
PART NUMBER: W8282-XPG-P-3XX

NOTES:

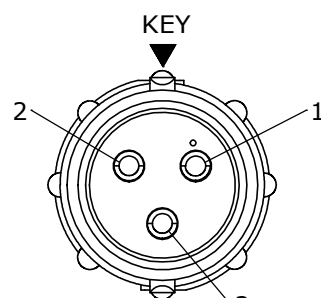
1. ALL PARTS ARE BULK PACKED
2. CONTACTS ASSEMBLED INTO CONNECTOR
3. DIMENSIONS ARE REFERENCE EXCEPT THOSE WITH A TOLERANCE

ASS'Y P/N	CABLE O.D.
W8282-XPG-P-3DC	DAISY CHAIN
W8282-XPG-P-311	.09-.14 [2.3-3.5]
W8282-XPG-P-315	.15-.17 [3.8-4.3]
W8282-XPG-P-318	.18-.20 [4.6-5.1]
W8282-XPG-P-321	.21-.23 [5.3-5.8]

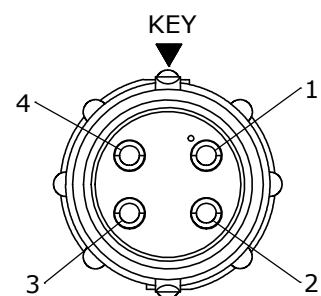
ASS'Y P/N	NO. OF CONTACTS
W8282-2PG-P-3XX	2-#20
W8282-3PG-P-3XX	3-#20
W8282-4PG-P-3XX	4-#20
W8282-5PG-P-3XX	5-#20
W8282-6PG-P-3XX	6-#20
W8282-7PG-P-3XX	7-#20
W8282-8PG-P-3XX	8-#20
W8282-XPG-P-3XX	



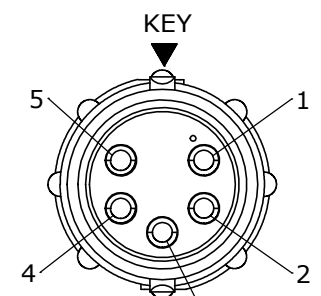
WIRE VIEW
W8282-2PG-P-3XX



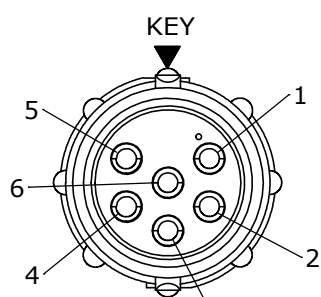
WIRE VIEW
W8282-3PG-P-3XX



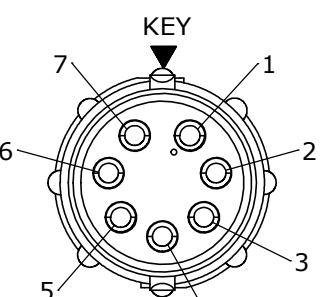
WIRE VIEW
W8282-4PG-P-3XX



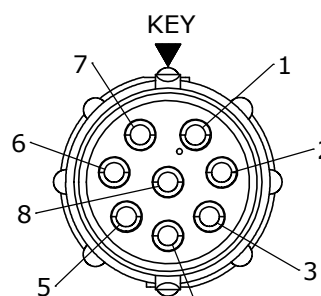
WIRE VIEW
W8282-5PG-P-3XX



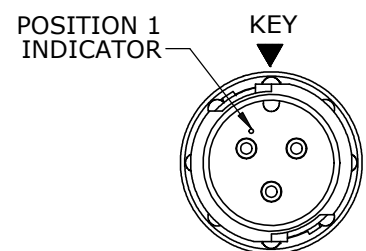
WIRE VIEW
W8282-6PG-P-3XX



WIRE VIEW
W8282-7PG-P-3XX

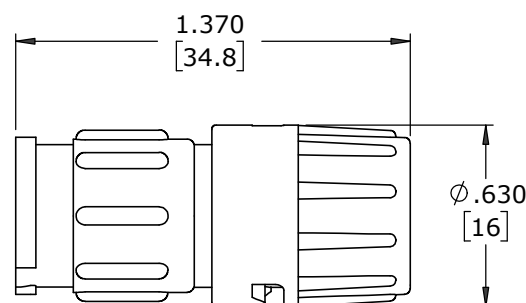


WIRE VIEW
W8282-8PG-P-3XX



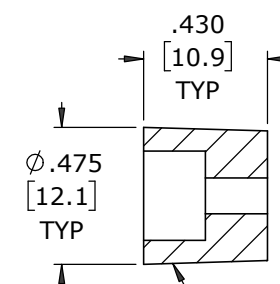
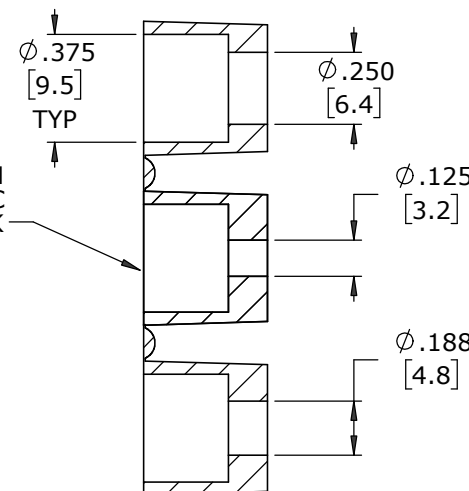
FACE VIEW
W8282-3PG-P-3XX SHOWN

INLINE CONNECTOR, MALE
MAT'L: UV PBT, BLACK

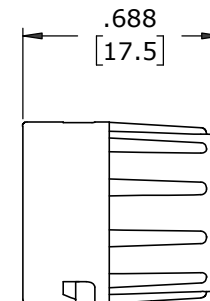


SHOWN ASSEMBLED
FOR CUSTOMER REFERENCE

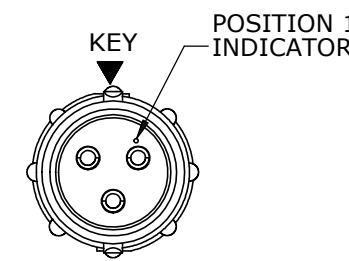
GROMMET, DAISY CHAIN
FOR W8282-XPG-P-3DC
MAT'L: RUBBER, BLACK



GROMMET
MAT'L: SANTOPRENE, BLACK
SIZE: SEE CHART



BACKSHELL
MAT'L: UV PBT, BLACK



WIRE VIEW
W8282-3PG-P-3XX SHOWN

GROMMET SIZE
NO. OF CONTACTS

DIMENSIONS IN BRACKETS [] ARE IN MILLIMETERS UNLESS INDICATED

CUSTOMER APPROVAL

THIS DOCUMENT CONTAINS CONFIDENTIAL INFORMATION PROPRIETARY TO CONXALL CORPORATION. ANY REPRODUCTION, DISCLOSURE, OR USE OF THIS DOCUMENT /INFORMATION IS EXPRESSLY PROHIBITED UNLESS AUTHORIZED IN WRITING BY CONXALL CORPORATION.

APPROVED BY: _____
DATE: _____

RoHS COMPLIANT

REV.	INIT.	DATE	DESCRIPTION
A	MA	07-08-20	DRAWING CREATED PER PDR 16014-10
<small>ALL INFORMATION ILLUSTRATED IS THE PROPERTY OF "CONXALL CORPORATION". UNAUTHORIZED DUPLICATION OR DISTRIBUTION OF THIS DOCUMENT IS PROHIBITED.</small>			<small>ORIG. DRAWN BY: MA</small> <small>DATE: 07-08-20</small>
<small>ALL UNITS ARE IN FEET, INCHES, FRACTION OF INCHES AND DECIMALS.</small>			
<small>601 E. WILDWOOD VILLA PARK, IL 60181</small>			<small>TITLE: IN-LINE CONNECTOR ASS'Y (2-8) #20 PIN CONTACTS, SOLDER INSTA-CLICK™ MINI-CON-X STANDARD PRODUCT</small>
<small>SCALE: NTS</small>		<small>SIZE: B</small>	<small>SHEET: 1 OF 1</small>
<small>FILE: W8282-XPG-P-3XX</small>		<small>DIRECTORY: SLW</small>	<small>PART NUMBER: W8282-XPG-P-3XX</small>
			<small>REV: A</small>