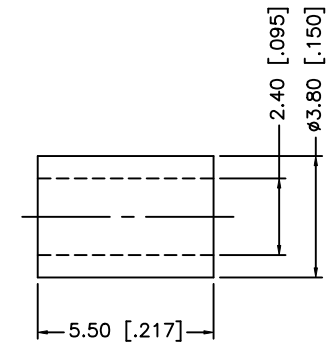
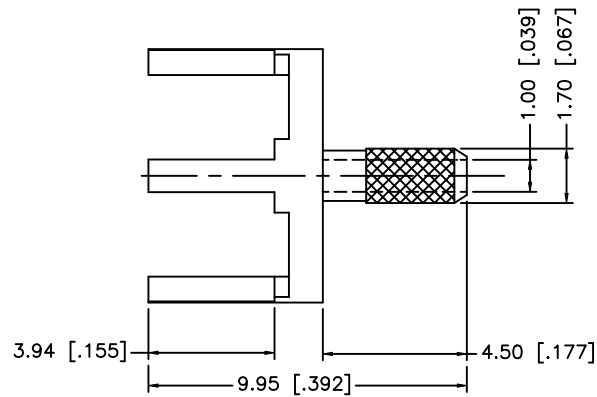
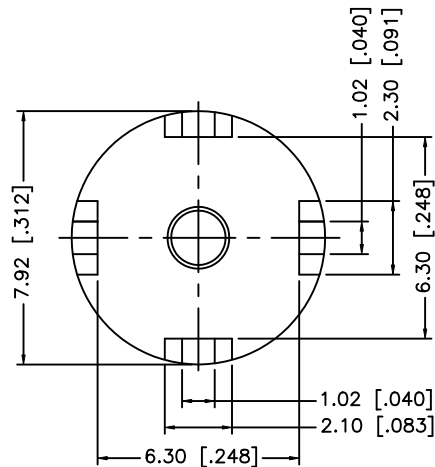
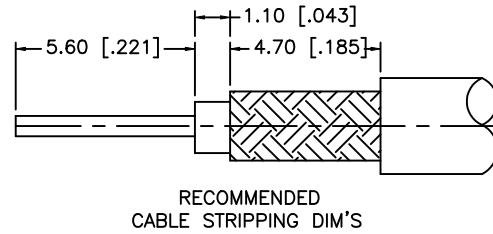
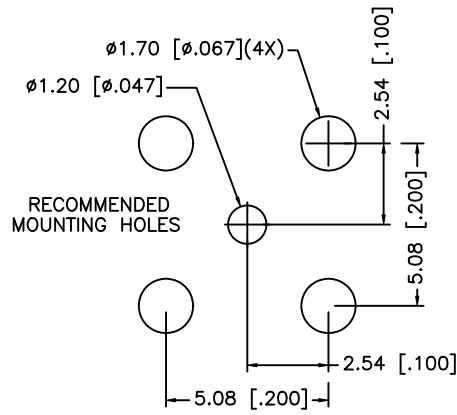


REV.	DATE	DESCRIPTION
NC	02/23/00	INITIAL RELEASE
A	03/24/08	UPDATE DRAWING FORMAT



NOTES:
1. CRIMPED FERRULE HEX CRIMP SIZE .128"

8				
7				
6				
5				
4				
3				
2	FERRULE	COPPER	GOLD	1
1	BODY	BRASS	GOLD	1
	DESCRIPTION	MATERIAL	FINISH	QTY

UNLESS OTHERWISE SPECIFIED DIMENSIONS ARE IN MILLIMETERS. DIMENSIONS IN [] ARE IN INCHES AND FOR CUSTOMER REFERENCE ONLY.

UNLESS OTHERWISE SPECIFIED TOLERANCES FOR MILLIMETERS ARE:
0.5 - 8mm ± 0.20mm
8 - 30mm ± 0.40mm
30 - 120mm ± 0.50mm

UNLESS OTHERWISE SPECIFIED TOLERANCES FOR INCHES ARE:
.020 - .315 = ± 0.007"
.315 - 1.180 = ± 0.015"
1.180 - 4.724 = ± 0.020"

DO NOT SCALE DRAWING

APPROVALS	DATE
DRAWN G.R.S.	03/24/08
CHECKED	
ISSUED	
SHEET 1 OF 1	
CAD FILE	C:/142/142266.DWG

<h1>Amphenol Connex</h1>			
PART DESCRIPTION			
PCB MOUNT CABLE TERMINATION (FOR RG-178B/U, 196A/U CABLE)			
PART NO.			
142266			
DWG. NO.	142266.DWG	REV.	A
SIZE	A	SCALE	NA