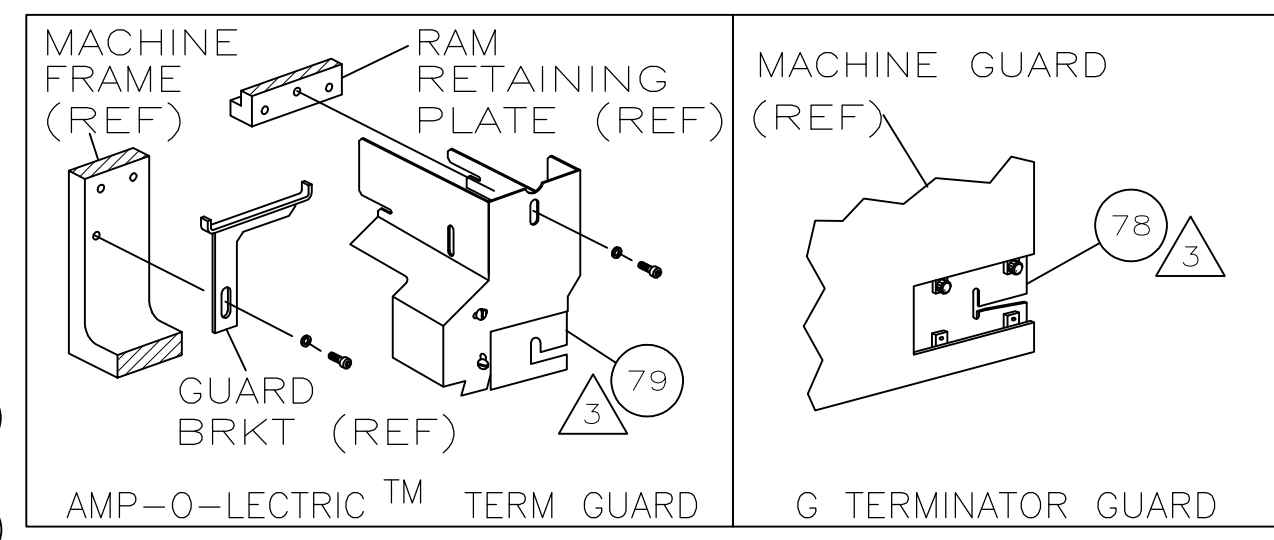


THIS DRAWING IS UNPUBLISHED. RELEASED FOR PUBLICATION. ALL INTERNATIONAL RIGHTS RESERVED.

PART NUMBER	REV	FIRST USED
1385240-1	C	122500-1
1385240-2	C	565435-5
1385240-3	C	354500-1

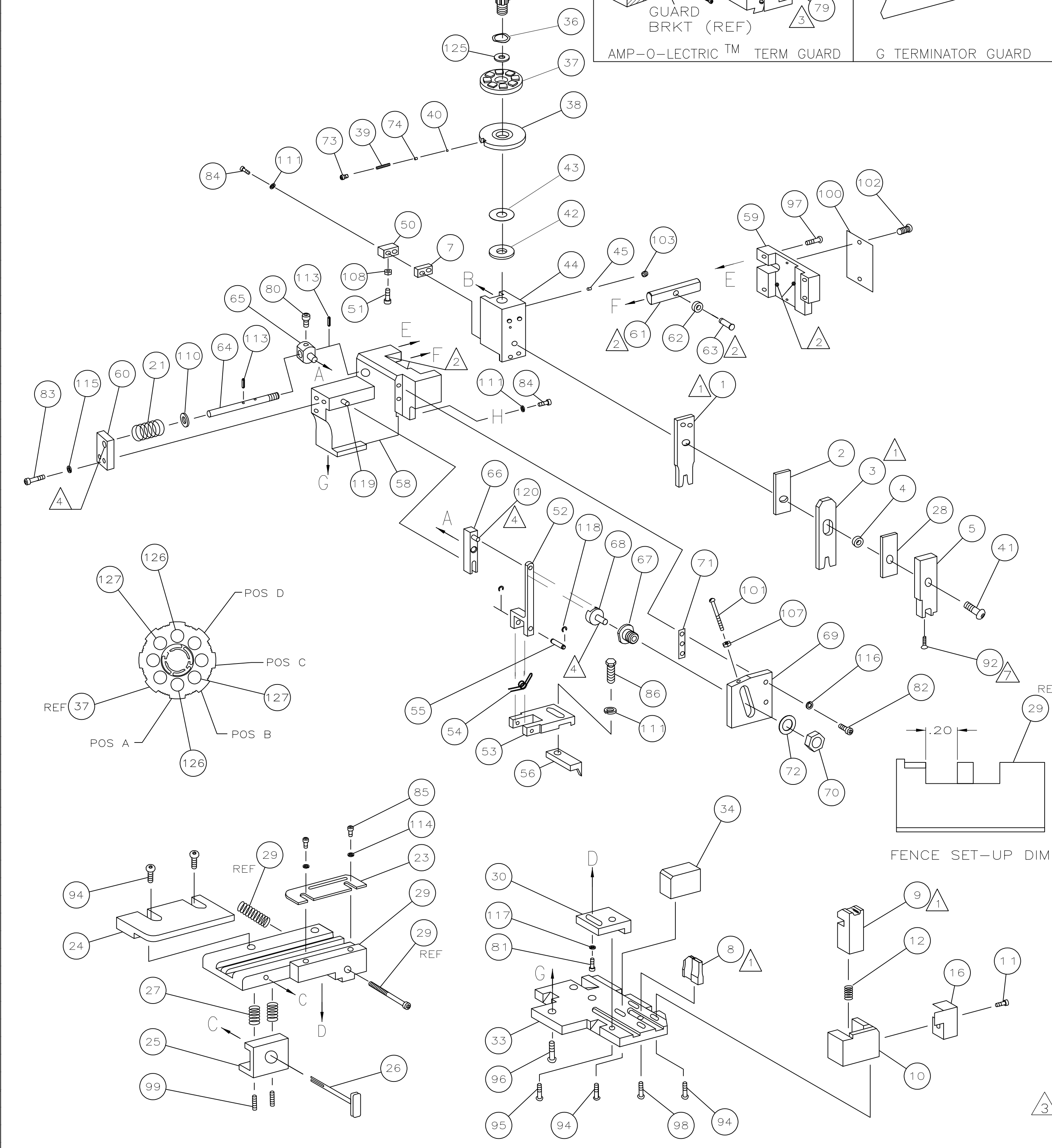


TERMINAL NAME: TERM F M/P 150 SER

AMP PN	MFR PN	PACKARD TERMINAL	AMP CRIMP SPECS
286933	12084200	PAD LTR	CRIMP HEIGHT
		A	.043 ±.002 [1.09 ±0.05mm]
		B	.039 ±.002 [0.99 ±0.05mm]
		C	NOT USED
		D	NOT USED
		CRIMP	SIZE TYPE RANGE
		WIRE	.070 [1.78mm] F 22-20
		INSUL	.160 [4.06mm] 0 .087 MAX
WIRE STRIP LENGTH	TERM APPL SPEC	FEED	APPL INSTRUCTION
-	-	.481	408-8040
			SET UP GAGE
			LAYOUT
			458637-1
			L2511

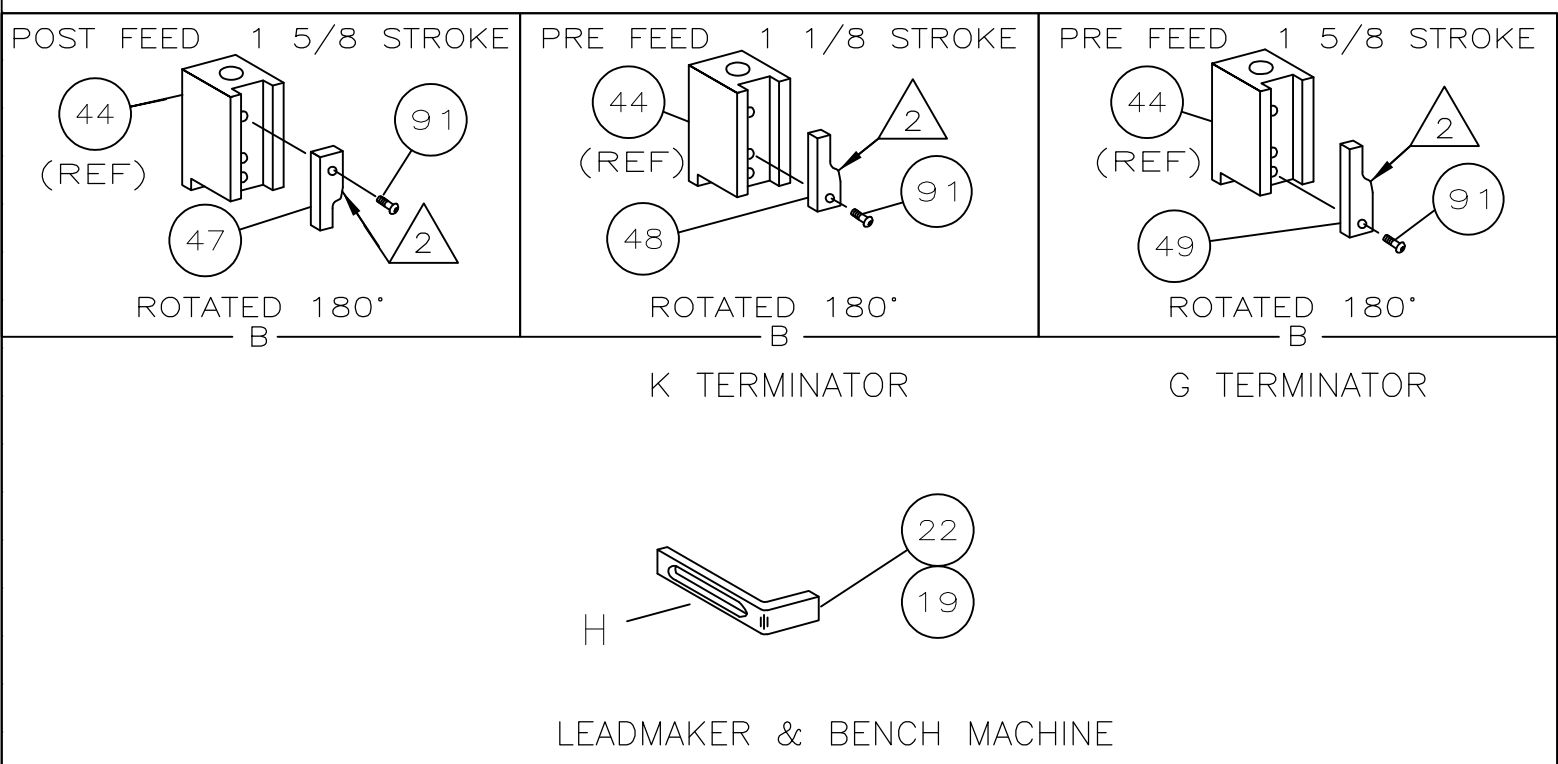
LOC	DIST	REVISIONS			
F	LTR	DESCRIPTION	DATE	BY	APVD
A	66	ECR-09-013446	6-2009	MY	TE

-1	LEADMAKER	MECH POST FEED
-2	BENCH MODEL K	MECH PRE FEED
-3	BENCH MODEL G	MECH PRE FEED



QTY	REF	REF	REF	REF	DESCRIPTION	ITEM NO
2	2	2	-	5-354779-4	PIN, WIRE DISC (.3260)B	129
2	2	2	-	4-354779-6	PIN, WIRE DISC (.3220)A	127
1	1	1	-	986950-1	WASHER, FLAT PRECISION	125
1	1	1	-	217238-1	GENERAL INSTRUCTION PACKAGE	124
1	1	1	-	4088040	SF APPL INST 408-8040	123
REF	REF	REF	-	1-21030-1	PIN,DOWEL(Ø.187x.50)LEVER	122
REF	REF	REF	-	1-21030-6	PIN,DOWEL(Ø.187x1.25)HOUSING	121
REF	REF	REF	-	21045-3	RING,RET "C"(Ø.187)FD FING PIN	120
1	1	1	-	21024-5	WASHER, LOCK(#10)ADJ BLOCK	119
REF	REF	REF	-	21024-5	WASHER,LOCK(#10)ADJ PLATE	118
REF	REF	REF	-	21024-5	WASHER,LOCK(#10)FEED GDE ROD	117
2	2	2	-	21024-2	WASHER,LOCK(#4)FRONT STP GUIDE	116
REF	REF	REF	-	5-21028-1	PIN,SLT SPR(Ø.125x.50)ADJ ROD	115
4	4	4	-	21024-4	WASHER,LOCK(#8)STRIPPER	114
REF	REF	REF	-	21899-4	WASHER,FLAT(Ø5/16)SCREW ADJ	113
1	1	1	-	21018-5	NUT,HEX(NO.6)HOLDDOWN	112
REF	REF	REF	-	21068-5	NUT,HEX(6-32)FEED ADJ	111
1	1	1	-	21009-2	SCR,SKT SET(1/4-20x.25 LW)RAM	110
2	2	2	-	21017-2	SCR,DRIVE(#2x.19)ID PLATE	109
REF	REF	REF	-	5-23715-5	SCR,PAN HD(6-32x1.50)FEED ADJ	108
1	1	1	-	461264-1	PLATE, IDENTIFICATION	107
2	2	2	-	5-21006-6	SCR,SET(10-32x.75)DRAG	106
1	1	1	-	22733-8	SCR,BHC(8-32x.38 LW)ANVIL	105
REF	REF	REF	-	2-21002-9	SCR,BHC(10-32x.75)CAP	104
REF	REF	REF	-	2-22733-8	SCR,BHC(1/4-20x.62)HOUSING	103
REF	REF	REF	-	2-21002-7	SCR,BHC(10-32x.50)SG ADJ BLOCK	102
6	6	6	-	2-21002-2	SCR,BHC(8-32x.50)TERM H DWN	101
2	2	2	-	2-21002-3	SCR,BHC(8-32x.62)R STP GDE	100
1	1	1	-	1-21003-9	SCR,FHC(6-32x.38)DEP	99
1	1	1	-	1-21002-7	SCR,BHC(6-32x.38)CAM	98
1	1	1	-	2-22603-0	SCR,HEX HD(8-32x.31)FEED FINGER	97
2	2	2	-	1-21000-3	SCR,SHC(4-40x.25)F ST GUIDE	96
3	3	3	-	2-21000-7	SCR,SHC(8-32x.50)STRIPPER	95
REF	REF	REF	-	3-21000-7	SCR,SHC(10-32x.75)FEED ROD GD	94
REF	REF	REF	-	3-21000-6	SCR,SHC(10-32x.62)FD ADJ BLK	93
1	1	1	-	3-21000-4	SCR,SHC(10-32x.38)SG ADJ BL	92
REF	REF	REF	-	3-21000-4	SCR,SHC(10-32x.38)PIVOT BLK	91
-	REF	-	-	455749-1	GUARD, WINDOW	90
REF	-	-	-	679532-1	INSERT, GUARD	89
1	1	1	-	690603-1	SPRING, ASSIST	88
1	1	1	-	23030-1	SCR,SHC(6-32x.25 SL)INS DISC	87
REF	REF	REF	-	458109-1	WASHER, SPECIAL	86
REF	REF	REF	-	690517-1	SPACER	85
-3	-2	-1	U/M	PART NO	DESCRIPTION	ITEM NO
QTY REQD PER ASSY					PARTS LIST	

REF	REF	REF	REF	REF	DESCRIPTION	ITEM NO
REF	REF	REF	-	22594-8	NUT,HEX(1/2-20)	70
REF	REF	REF	-	240628-1	PLATE, ADJUSTMENT	69
REF	REF	REF	-	240626-1	SHAFT, PIVOT	68
REF	REF	REF	-	240633-1	BUSHING	67
REF	REF	REF	-	455680-1	LEVER, INTERMEDIATE	66
REF	REF	REF	-	240629-1	BLOCK, PIVOT	65
REF	REF	REF	-	240632-2	SCREW, ADJ FEED ROD	64
REF	REF	REF	-	240659-3	PIN, CAM ROLLER	63
REF	REF	REF	-	240658-1	ROLLER, CAM	62
REF	REF	REF	-	454398-2	ROD, FEED	61
REF	REF	REF	-	454178-1	GUIDE, FEED ROD	60
REF	REF	REF	-	454220-1	CAP, RAM	59
REF	REF	REF	-	454485-1	HOUSING	58
1	1	1	-	458537-2	PAWL, FEED	57
REF	REF	REF	-	240624-1	PIN, FEED FINGER	56
REF	REF	REF	-	691499-1	SPRING, FEED FINGER	55
REF	REF	REF	-	690541-1	HOLDER, FEED FINGER	54
REF	REF	REF	-	455679-2	LEVER, TERMINAL FEED ARM	53
1	1	1	-	811242-2	BUMPER, HOLDDOWN	52
1	1	1	-	690753-1	SPACER, TONKER	51
1	-	-	-	690602-6	CAM, PRE-FEED 1 5/8 ST	50
-	1	-	-	690602-5	CAM, PRE-FEED 1 1/8 ST	49
-	-	1	-	690501-4	CAM, POST-FEED 1 5/8 ST	48
1	1	1	-	459456-2	APPLICATOR, BASIC (SUBASSY)	47
1	1	1	-	690191-1	PLUG, NYLON	46
1	1	1	-	455673-1	RAM	45
1	1	1	-	690125-1	WASHER, LAMINATED	44
1	1	1	-	690124-1	WASHER, RAM	43
1	1	1	-	7-21002-9	BOLT, CRIMPER(5/16x1.00)	42
1	1	1	-	23241-6	BALL, STEEL	41
1	1	1	-	690170-1	SPRING, COMPRESSION	40
1	1	1	-	690142-1	DISC, INSULATION	39
1	1	1	-	354777-1	WIRE DISC, PLASTIC	38
1	1	1	-	22480-5	WASHER, SPRING	37
1	1	1	-	690212-1	POST, RAM	36
1	1	1	-	2-690786-3	SUPPORT, TERMINAL	35
REF	REF	REF	-	455675-1	PLATE, BASE	34
						33
						32
						31
REF	REF	REF	-	455689-1	BLOCK, STRIP GUIDE ADJ	30
1	1	1	-	318042-1	STRIP GUIDE PLATE ASSY	29
1	1	1	-	455888-6	SPACER, FRONT SHEAR DEP	28
2	2	2	-	1-22284-0	SPRING, DRAG	27
1	1	1	-	690546-1	LEVER, DRAG RELEASE	26
1	1	1	-	240792-1	DRAG, TERMINAL	25
1	1	1	-	2-90765-5	GUIDE, STRIP (REAR)	24
1	1	1	-	690438-1	GUIDE, STRIP (FRONT)	23
-	-	1	-	690472-2	STRIPPER	22
REF	REF	REF	-	4-22284-9	SPRING, FEED RETURN	21
						20
1	1	-	-	690472-1	STRIPPER	19
						18
						17
1	1	1	-	318563-1	GUARD, CHIP, FRONT	16
						15
						14
						13
1	1	1	-	3-22280-3	SPRING, SHEAR	12
1	1	1	-	690461-2	STOP, SHEAR	11
1	1	1	-	1-690459-0	HOLDER, SHEAR (FRONT)	10
1	1	1	-	318707-2	SHEAR, FLOAT (FRONT)	9
1	1	1	-	4-662185-1	ANVIL	8
1	1	1	-	1-240641-7	SPACER, DEPRESSOR (REAR)	7
						6
1	1	1	-	318701-1	DEPRESSOR, SHEAR (FRONT)	5
1	1	1	-	1-230811-0	SPACER, BLOCK CRIMPER	4
1	1	1	-	1-904741-9	CRIMPER, INSULATION	3
1	1	1	-	1-455888-6	SPACER, CRIMPER	2
1	1	1	-	3-456404-9	CRIMPER, WIRE	1
-3	-2	-1	U/M	PART NO	DESCRIPTION	ITEM NO
QTY REQD PER ASSY					PARTS LIST	



- 1 RECOMMENDED SPARE PARTS.
- 2 GREASE LIGHTLY.
- 3 GUARD MUST BE IN PLACE WHEN OPERATING APPLICATOR IN A BENCH MACHINE.
- 4 LUBRICATE DAILY USING NO. 20 MACHINE OIL.
- 5. ITEMS WITH QTY OF REF SPECIFIED (EXCEPT ITEMS 78 AND 79) ARE USED ON ITEM 46.
- 6 APPLICATOR APPLIES TERMINAL WITH SEAL PN 12052925.
- 7 APPLY TORQ-SEAL IN ALLEN SOCKET TO FILL HOLE AFTER FLAT HD HAS BEEN ADJUSTED TO CORRECT HEIGHT AT QUALIFICATION. APPLY PN 1-23419-5 LOC-TITE TO THREADS.

THIS DRAWING IS A CONTROLLED DOCUMENT.

APPROVED: J. ELBIN

DATE: 01MAY01

NAME: SIDE FEED HDM APPLICATOR

SIZE: A1

SCALE: 1 of 1

REV: C

Customer Drawing