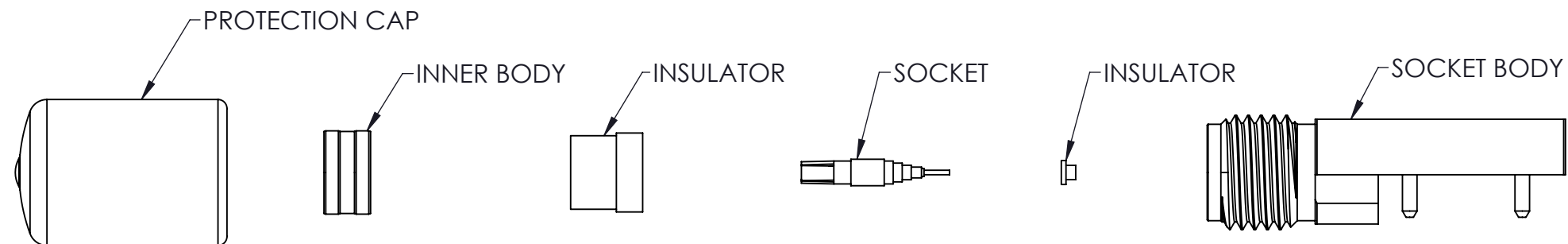
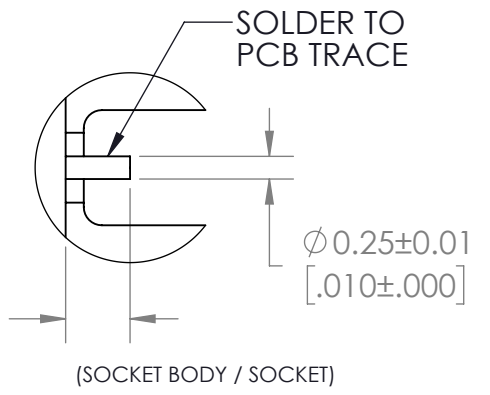
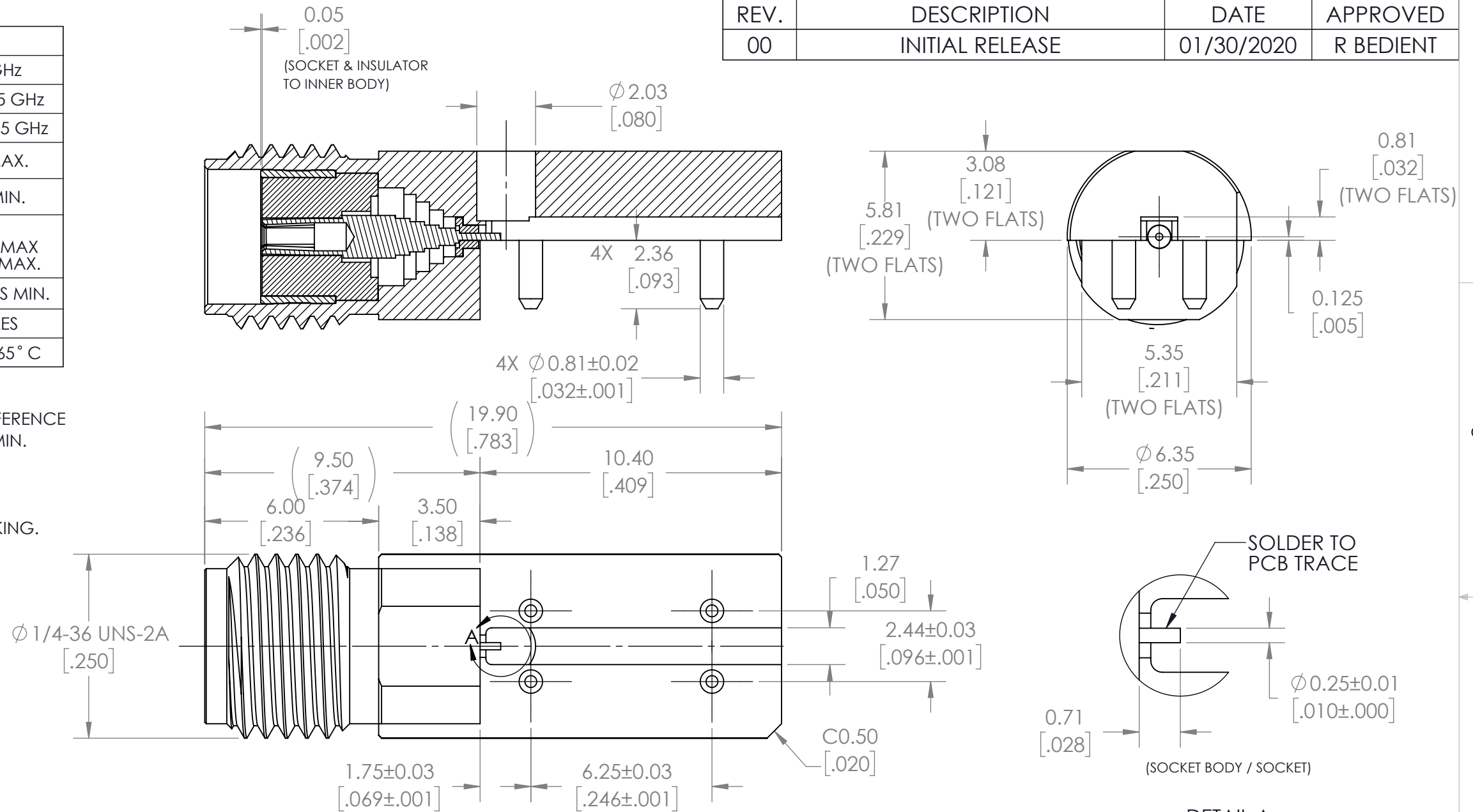


SPECIFICATIONS:
ELECTRICAL RATINGS

IMPEDANCE	50 Ohm
FREQUENCY RANGE	DC ~ 26.5 GHz
V.S.W.R.	1.3 MAX @ 26.5 GHz
INSERTION LOSS	≤ 0.31 DB @ 26.5 GHz
WORKING VOLTAGE (AT SEA LEVEL)	170 V RMS MAX.
DIELECTRIC WITHSTANDING VOLTAGE (AT SEA LEVEL)	500 V RMS MIN.
CONTACT RESISTANCE CENTER CONTACT OUTER CONTACT	6 MILLIOHMS MAX 2 MILLIOHMS MAX.
INSULATION RESISTANCE	5000 MEGOHMS MIN.
DURABILITY	≥ 500 CYCLES
TEMPERATURE RANGE	-65° C TO + 165° C

- NOTES:**
1. THESE CHARACTERISTICS ARE TYPICAL AND FOR REFERENCE
 2. PUSHOUT FORCE FOR INSULATOR: 44.48 N (10 Lb) MIN.
 3. PUSHOUT FORCE FOR PIN: 13.35 N (3 Lb) MIN.
 4. PRODUCT TO BE PACKAGED 100 PARTS PER TRAY (ONE PART PER POCKET)
 5. PROTECTION CAP MUST BE INSTALLED BEFORE PACKING.

REVISION			
REV.	DESCRIPTION	DATE	APPROVED
00	INITIAL RELEASE	01/30/2020	R BEDIENT



THE INFORMATION CONTAINED HEREIN IS PROPRIETARY TO CARLISLE, INC. AND SHALL IN NO WAY BE REPRODUCED OR DISCLOSED IN WHOLE OR IN PART OR USED FOR ANY DESIGN OR MANUFACTURE EXCEPT WHEN SUCH USER POSSESSES DIRECT, WRITTEN AUTHORIZATION FROM CARLISLE, INC.



DO NOT SCALE DRAWING

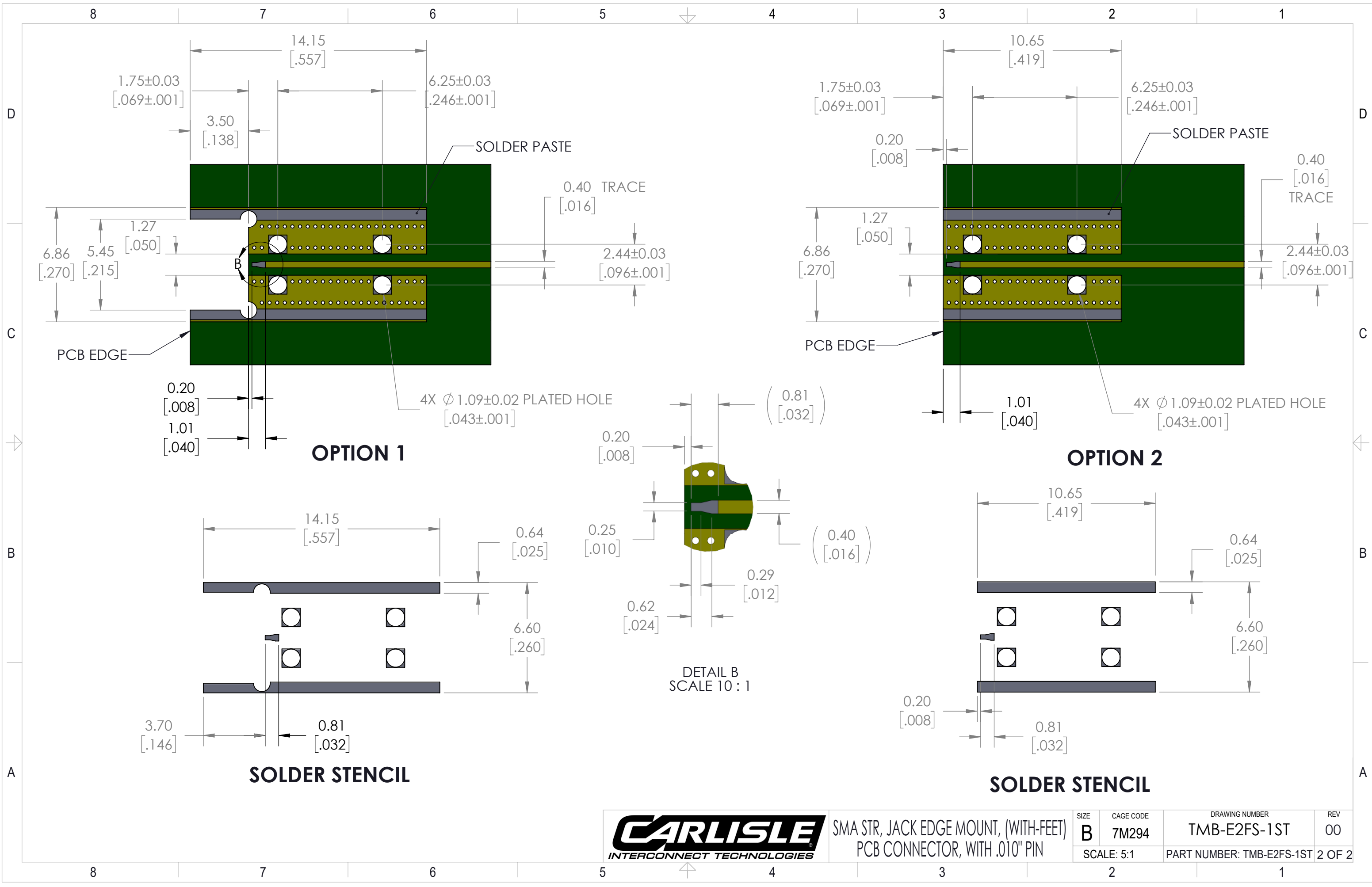
UNLESS OTHERWISE SPECIFIED
DIMENSION ARE IN MM
TOLERANCES ARE:

APPROVALS	DATE
DRAWN BY: R BEDIENT	01/30/2020
ENGINEER: R BEDIENT	01/30/2020
PRODUCTION	
QUALITY	

7911 188th ST
SUITE #100
Kent, WA 98032

SMA STR, JACK EDGE MOUNT, (WITH-FEET)
PCB CONNECTOR, WITH .010" PIN

SIZE: B	CAGE CODE: 7M294	DRAWING NUMBER: TMB-E2FS-1ST	REV: 00
SCALE: 6:1		PART NUMBER: TMB-E2FS-1ST 1 OF 2	



SMA STR, JACK EDGE MOUNT, (WITH-FEET)
PCB CONNECTOR, WITH .010" PIN

SIZE B	CAGE CODE 7M294	DRAWING NUMBER TMB-E2FS-1ST	REV 00
SCALE: 5:1		PART NUMBER: TMB-E2FS-1ST 2 OF 2	