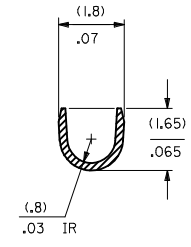
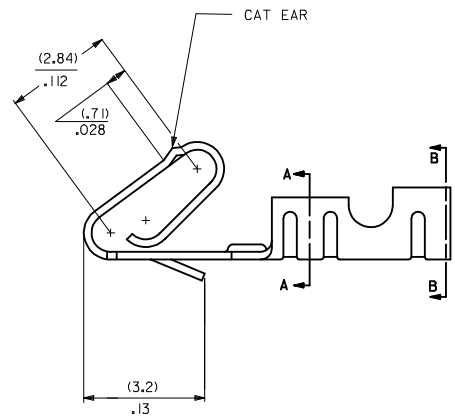
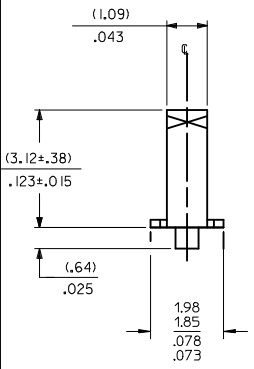
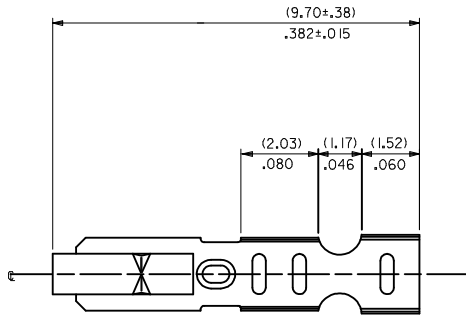
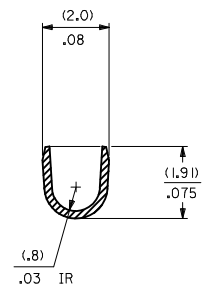


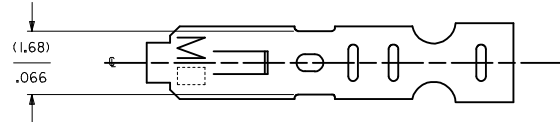
- NOTES:
1. MATERIAL: PHOS BRONZE
  2. FINISH: SEE LEGEND
  3. PRODUCT SPECIFICATION: PS-10-07
  4. PACKAGING: LOOSE TERMINALS: PER PK-2759-001  
CHAIN FORM TERMINALS: PER PK-6459-001
  5. INSERTION FORCE OF TERMINAL INTO (2.54)/.100 CL HOUSING IS 11.1 N / 2.5 LBS MAX.
  6. TERMINAL RETENTION IN HOUSING IS 26.7N / 6LBS MIN. WHEN PULLED AT THE RATE OF 25.4MM / 1 INCH PER MINUTE.
  7. DIMENSIONS GIVEN ACROSS CENTERLINES ARE SYMMETRICAL ABOUT THOSE CENTERLINES WITHIN HALF THE TOTAL TOLERANCE.
  8. CRIMP IS FOR 22-30 GA WIRE WITH (1.57)/.062 DIA. INSULATION MAX.
  9. THIS PART CONFORMS TO CLASS B REQUIREMENTS OF COSMETIC SPECIFICATION PS-45499-002.



SECTION A-A  
BACKGROUND OMITTED



SECTION B-B  
BACKGROUND OMITTED



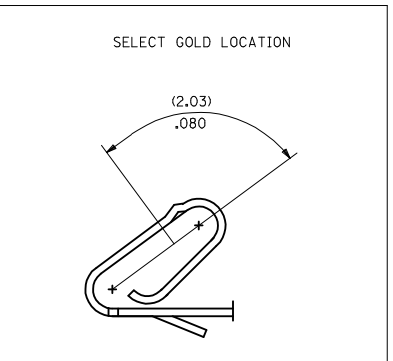
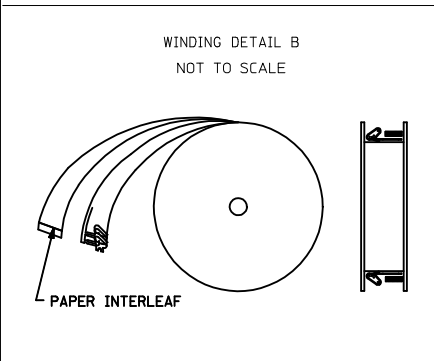
41572-\*(\*\*\*)\*

MATERIAL: A= SEE NOTE 1

FORM: L=LOOSE, BLANK=CHAIN PER DETAIL B

PLATING: (P909) OVERALL HOT TIN DIP: (0.00254)/.000100 MIN. (154) OVERALL TIN: (0.00254)/.000100 MIN. OVER (0.00127)/.000050 MIN. NICKEL

PART NO.	ENG NO.
08-65-0804	41572-A(P909)
08-65-0805	41572-A(P909)L
41572-0002	41572-A(154)



ADD PK-6459-001 EC NO: UCP2014-0151 DRAWN: KIPPER 2013/07/18 CHKD: BANDERSON 2013/07/18 APPR: F. SMITH 2013/07/24	QUALITY SYMBOLS ▽=0 ▽=0 ▽=0	GENERAL TOLERANCES (UNLESS SPECIFIED)		DIMENSION STYLE MM/IN		SCALE 10:1	DESIGN UNITS INCH	THIRD ANGLE PROJECTION	
		4 PLACES ± --- ± ---	3 PLACES ± --- ± .010	2 PLACES ± 0.25 ± .015	1 PLACE ± 0.38 ± ---	0 PLACE ± ±	DRAWN BY: SAMIEC 1993/03/19 CHECKED BY: PATEL 1993/03/19 APPROVED BY: _____		TITLE: KK (2.54)/.100 CRIMP TERMINAL 22-30 GA 6459 WITH CAT EAR
G1	REV	ANGULAR ±1/2° DRAFT WHERE APPLICABLE MUST REMAIN WITHIN DIMENSIONS		MATERIAL NO. SEE CHART		DOCUMENT NO. SD-41572		SHEET NO. 1 OF 1	
THIS DRAWING CONTAINS INFORMATION THAT IS PROPRIETARY TO MOLEX INCORPORATED AND SHOULD NOT BE USED WITHOUT WRITTEN PERMISSION									