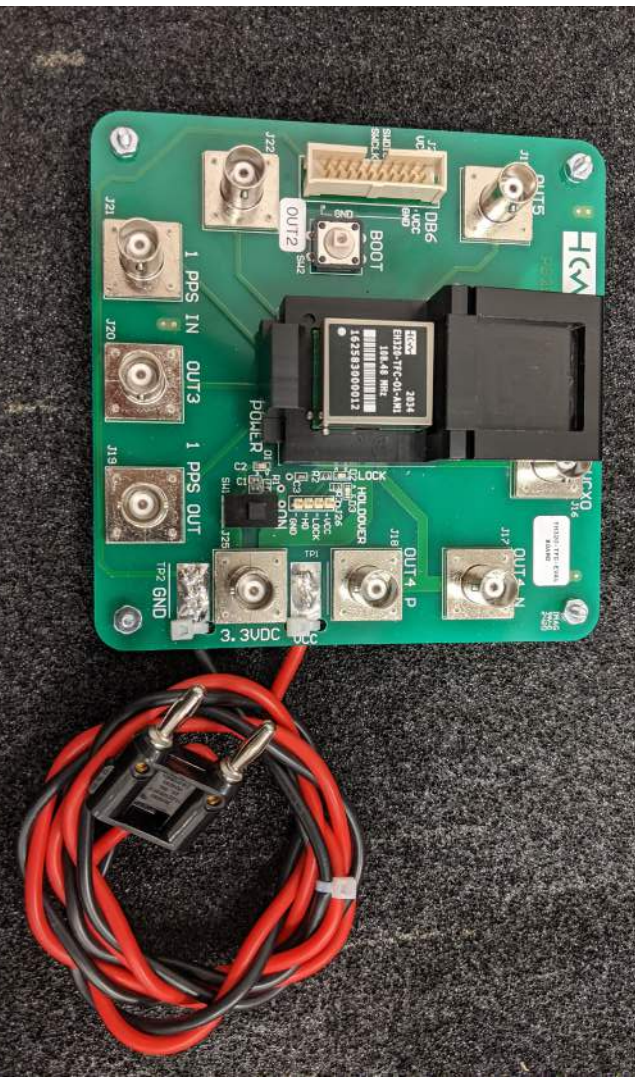


EH320-TFC-EVAL Eval Board Quick Start Guide

Q U I C K S T A R T G U I D E



General Instructions

1. Insert the EH320-TFC unit into the eval board socket
 - Pin 1 of the EH320-TFC should be oriented to the lower left of the fixture in the view above.
 - Close the clam-shell cover until it clicks.
2. Connect power
 - Connect the wired Vcc banana plug from connections around J25 to an appropriate 3.3V power supply capable of supplying ~ 2.0A. This wired power connection is more stable than using the J25 BNC connector.
3. Connect the 1PPS input and applicable outputs:
 - For CMOS outputs, use a high impedance probe if possible.
 - For sinewave outputs, use a coaxial cable to a 50ohm DC scope input.
 - For LVDS or LVPECL outputs on OUT4N/P, terminate externally as appropriate.

Designator/Label	Input/Output	Voltage/Logic Type	Function
J15 "OUT5"	Output	LVCMOS	Variable Freq OUT5
J16 "OUT1 VCXO"	Output	LVCMOS	CMOS VCXO output
J17 "OUT4N"	Output	LVCMOS, LVPECL or LVDS	Terminate Externally
J18 "OUT4P"	Output	LVCMOS, LVPECL or LVDS	Terminate Externally
J19 "1PPS OUT"	Output	LVCMOS	1PPS Signal
J20 "OUT 3"	Output	LVCMOS	OUT3 signal
J21 "1PPS IN"	Input	LVCMOS	1PPS Input Signal
J22 "OUT2"	Output	Sinewave or LVCMOS	Output 2 signal
J25 "VCC IN"	Input	+3.3V/dc \pm 5%	Use wired Vcc power connection

Eval Board Schematic

