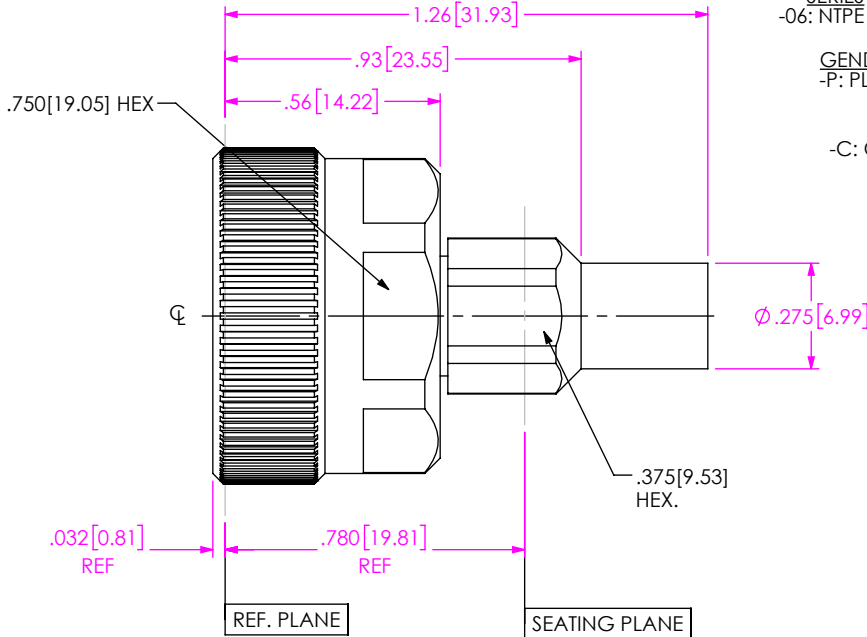
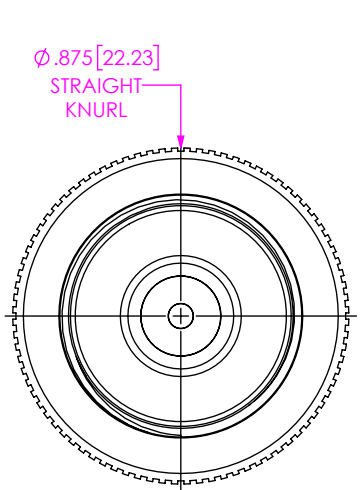


DO NOT SCALE FROM THIS PRINT

DESIGNED & DIMENSIONED IN INCHES[MILLIMETERS]

PRF06-P-C-EP-142-SS-1



SERIES
-06: NTPE

GENDER
-P: PLUG

TYPE
-C: CABLE

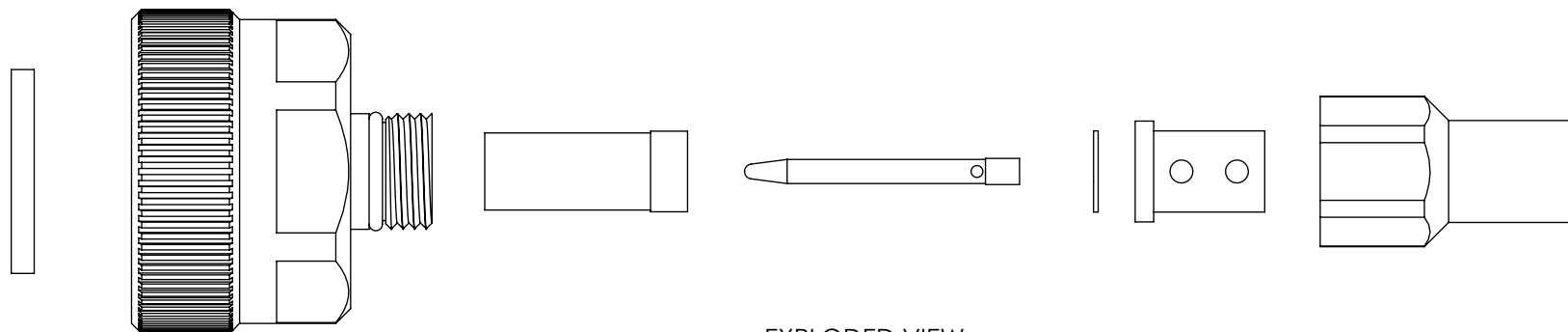
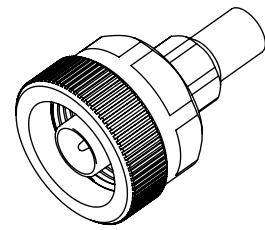
FINISH
-EP: 50µ" EXTRA HEAVY GOLD CENTER CONTACT, PASSIVATED OUTER CONTACT

OPTION
-1

TERMINATION
-S: SOLDER CLAMP


ORIENTATION
-S: STRAIGHT

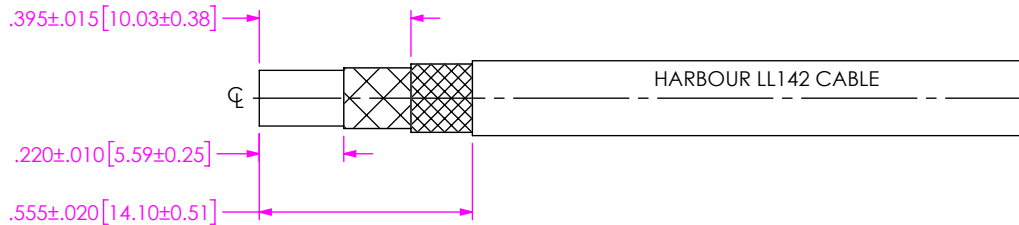
CABLE TYPE
-142: HARBOUR LL142



EXPLODED VIEW
NOT TO SCALE
(FOR CLARITY ONLY)

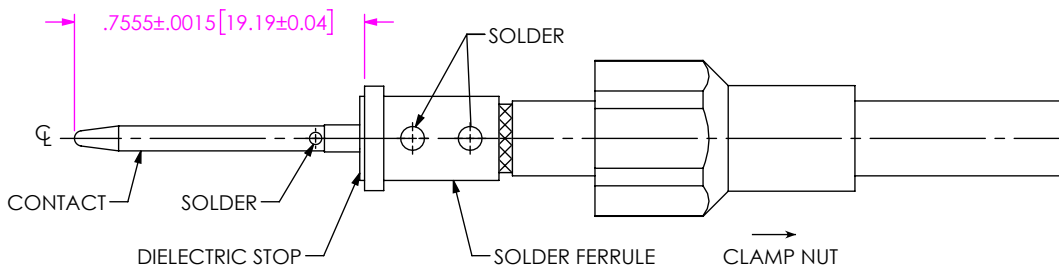
- NOTES:
- MATERIAL:**
BODY, COUPLING NUT & CLAMP NUT: STAINLESS STEEL.
PIN: BERYLLIUM COPPER.
SOLDER FERRULE: BRASS.
GASKET & O-RING: SILICONE RUBBER.
INSULATOR & CABLE STOP: PTFE.
 - FINISH:**
BODY, COUPLING NUT & CLAMP NUT: PASSIVATED.
PIN & SOLDER FERRULE: GOLD OVER NICKEL PLATE,
50 µIN MIN GOLD OVER 50 µIN MIN NICKEL.
 - PCI P/N: 3838.

<p>UNLESS OTHERWISE SPECIFIED, DIMENSIONS ARE IN INCHES. TOLERANCES ARE: DECIMALS ANGLES .XX: ±.01 [0.3] .XXX: ±.002 [0.05] .XXXX: ±.0005 [0.013]</p>	<p>PROPRIETARY NOTE * THIS DOCUMENT CONTAINS CONFIDENTIAL AND PROPRIETARY INFORMATION AND ALL DESIGN, MANUFACTURING, REPRODUCTION, USE, PATENT RIGHTS AND SALES RIGHTS ARE EXPRESSLY RESERVED BY SAMTEC, INC. THIS DOCUMENT SHALL NOT BE DISCLOSED, IN WHOLE OR PART, TO ANY UNAUTHORIZED PERSON OR ENTITY NOR REPRODUCED, TRANSFERRED OR INCORPORATED IN ANY OTHER PROJECT IN ANY MANNER WITHOUT THE EXPRESS WRITTEN CONSENT OF SAMTEC, INC.</p>	 <p>520 PARK EAST BLVD, NEW ALBANY, IN 47150 PHONE: 812-944-6733 FAX: 812-948-5047 e-Mail: info@SAMTEC.com code 55322</p>
<p>DO NOT SCALE DRAWING</p>	<p>SHEET SCALE: 2:1</p>	<p>DESCRIPTION: N PLUG (18 GHZ), SOLDER CLAMP FOR HARBOUR LL142 CABLE, KNURL/HEX NUT</p> <p>DWG. NO. PRF06-P-C-EP-142-SS-1</p> <p>BY: WILLY Y 7/11/2022 SHEET 1 OF 2</p>



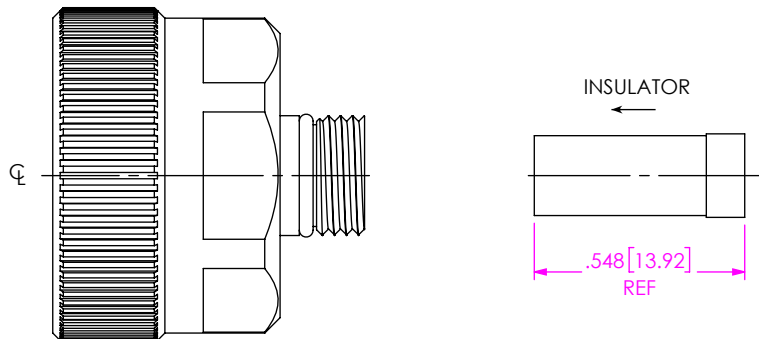
1. TRIM CABLE AS SHOWN.

IN-PROCESS 1



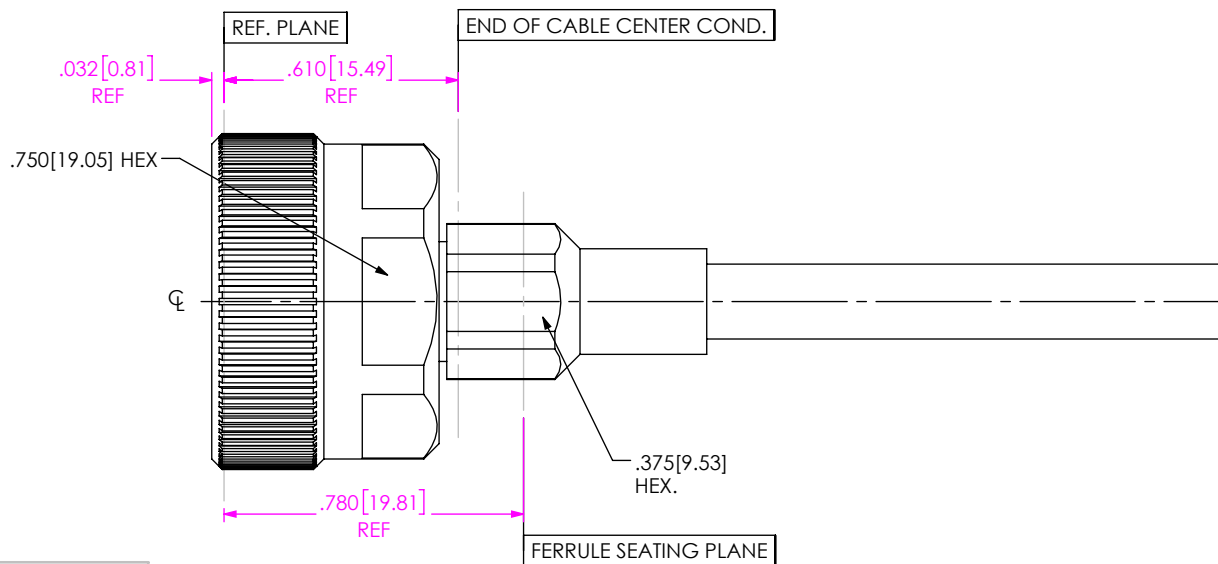
- 2A. SLIDE CLAMP NUT OVER CABLE AS SHOWN.
- 2B. INSERT CABLE INTO SOLDER FERRULE AS SHOWN THEN SOLDER BRAIDS TO FERRULE WHERE INDICATED.
- 2C. TRIM EXPOSED CABLE DIELECTRIC FLUSH WITH SOLDER FERRULE FACE.
- 2D. SLIDE DIELECTRIC STOP OVER CABLE CENTER CONDUCTOR AGAINST FERRULE FACE AND SOLDER CONTACT FLUSH AGAINST STOP TO DIMENSION SHOWN.

IN-PROCESS 2



3. INSTALL INSULATOR INTO SUB ASSEMBLY.

IN-PROCESS 3



- 4A. INSERT CABLE/ CONTACT SUB-ASSEMBLY INTO CONNECTOR UNTIL SEATED.
- 4B. TIGHTEN CONNECTOR COUPLING NUT TO MATING TYPE N JACK.
- 4C. TIGHTEN REAR CLAMP NUT TO 30-40 IN-LBS AND DISENGAGE MAIN INTERGACE FROM JACK.

IN-PROCESS 4

PROPRIETARY NOTE
THIS DOCUMENT CONTAINS CONFIDENTIAL AND PROPRIETARY INFORMATION AND ALL DESIGN, MANUFACTURING, REPRODUCTION, USE, PATENT RIGHTS AND SALES RIGHTS ARE EXPRESSLY RESERVED BY SAMTEC, INC. THIS DOCUMENT SHALL NOT BE DISCLOSED, IN WHOLE OR PART, TO ANY UNAUTHORIZED PERSON OR ENTITY NOR REPRODUCED, TRANSFERRED OR INCORPORATED IN ANY OTHER PROJECT IN ANY MANNER WITHOUT THE EXPRESS WRITTEN CONSENT OF SAMTEC, INC.



DO NOT SCALE DRAWING
SHEET SCALE: 2:1

DESCRIPTION: N PLUG (18 GHZ), SOLDER CLAMP FOR HARBOUR LL142 CABLE, KNURL/HEX NUT

DWG. NO. PRF06-P-C-EP-142-SS-1

BY: WILLY Y 7/11/2022 SHEET 2 OF 2