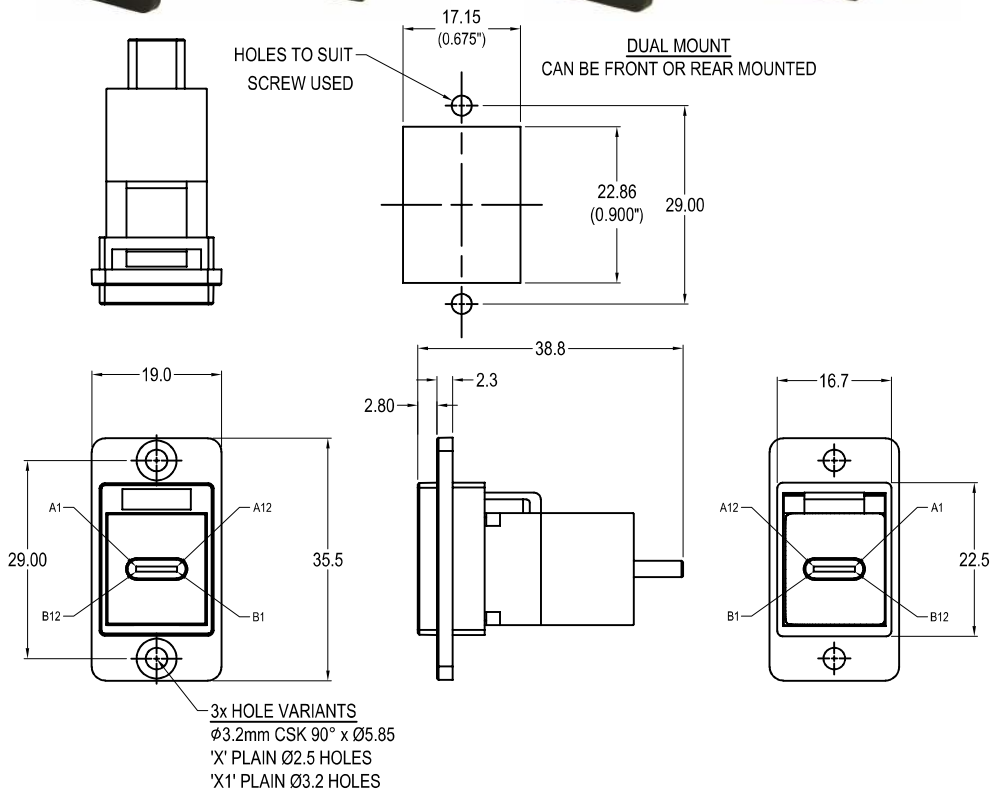


CLIFF

DUALSLIM USB-C Female-Male FEEDTHROUGH CONNECTOR

Can be front or rear mounted in the panel



VARIANTS

Part No.

CP30711

DUALSLIM USB-C F-M Black plastic frame, CSK holes

CP30711X

DUALSLIM USB-C F-M Black plastic frame, Ø2.5 PLAIN holes

CP30711X1

DUALSLIM USB-C F-M Black plastic frame, Ø3.2 PLAIN holes

Feedthrough Features

- Fits standard rectangular cutout.
- Front or rear mounting through the panel.
- Various hole mounting options.
- No soldering or punch termination. Use standard cable for each connector style.
- Low rear profile.

General:

Please note: Functionality is affected by cable quality, length and cable wiring configuration.

Material:

1. Insert: ABS - UL94 HB
2. Plastic Frame: Polyamide UL94 V-2

USB-C Specification:

Maximum Rated Current - 3A
Maximum Working Voltage - 30V
Withstanding Voltage - 100V for 1 minute.
Contact Resistance - 40 Milli-ohms Max.
Insulation Resistance - 100 Mega-ohms Min.
Insulator Flammability Rating - UL-94V0
Insertion Life - 10,000 Cycles.