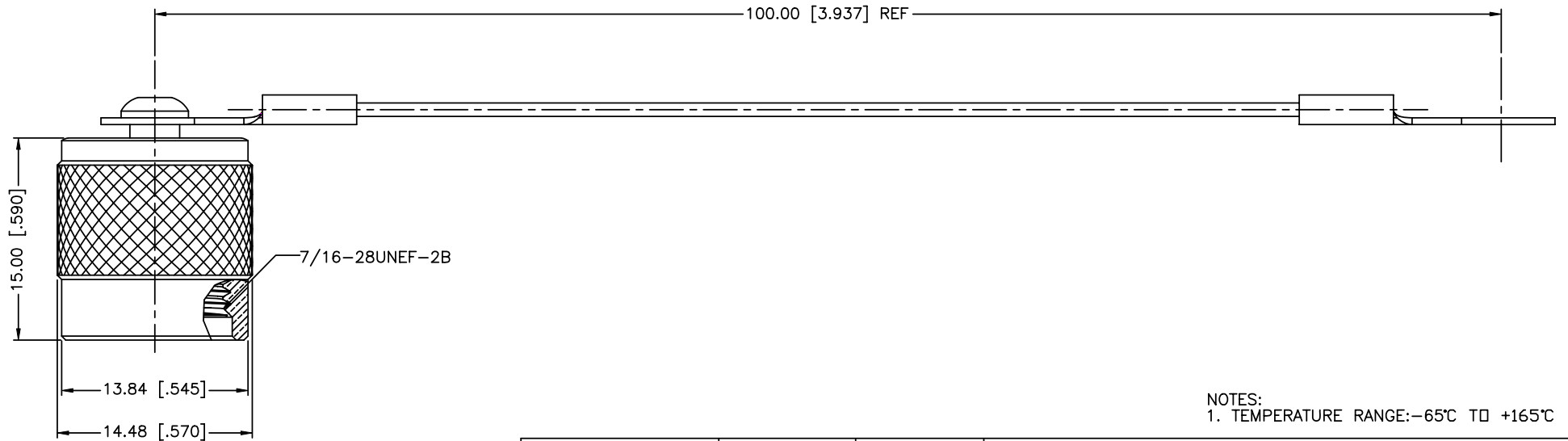
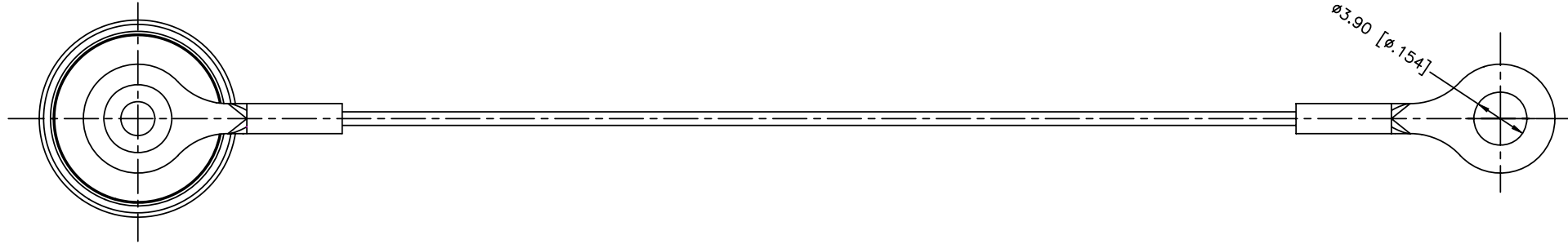
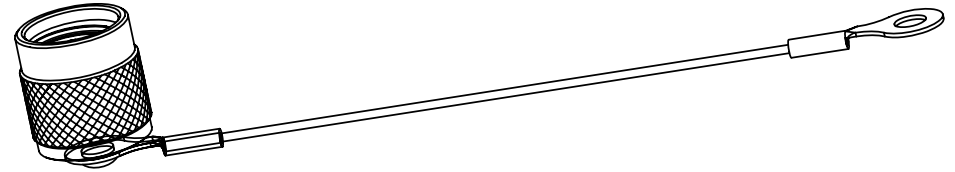


REV.	DATE	ECR NO.	DESCRIPTION
NC	04/25/12	XXXXXX	INITIAL RELEASE



NOTES:
1. TEMPERATURE RANGE: -65°C TO +165°C

5	GASKET	SILICONE RUBBER	RED	1
4	WASHER	BRASS	NICKEL	1
3	CHAIN	STAINLESS STEEL	PASSIVATED	1
2	RIVET	BRASS	NICKEL	1
1	BODY	BRASS	NICKEL	1
DESCRIPTION	MATERIAL	FINISH	QTY	

UNLESS OTHERWISE SPECIFIED DIMENSIONS ARE IN MILLIMETERS. DIMENSIONS IN [] ARE IN INCHES AND FOR CUSTOMER REFERENCE ONLY.

UNLESS OTHERWISE SPECIFIED TOLERANCES FOR MILLIMETERS ARE:
0.5 - 8mm ± 0.20mm
8 - 30mm ± 0.40mm
30 - 120mm ± 0.50mm

UNLESS OTHERWISE SPECIFIED TOLERANCES FOR INCHES ARE:
.020 - .315 = ± 0.007"
.315 - 1.180 = ± 0.015"
1.180 - 4.724 = ± 0.020"

DO NOT SCALE DRAWING

APPROVALS	DATE
DRAWN I.XU	04/25/12
CHECKED	
ISSUED	
SHEET 1 OF 1	
CAD FILE	
C:/CONNEX/202101-11.DWG	

Amphenol Connex			
PART DESCRIPTION			
TNC MALE CAP WITH WIRE CHAIN			
PART NO.			
202101-11			
DWG. NO.	202101-11 .DWG	REV.	NC
SIZE	A	SCALE	NA