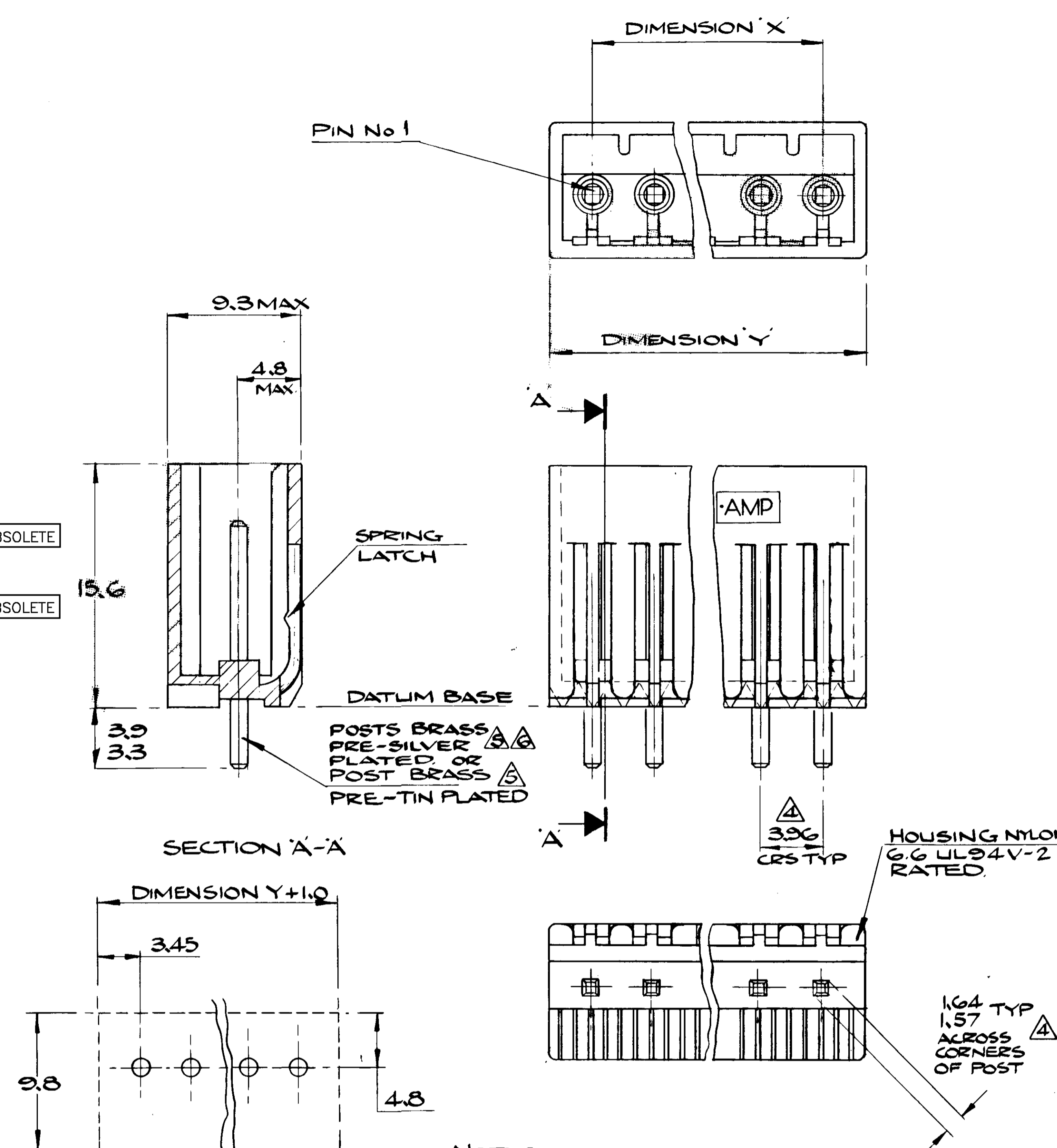


SHEET of	No OF WAYS	No OF POSITIONS	BLANK POSITIONS	HOUSING COLOURS						DIMENSION	
				NATURAL	BLACK	RED	GREY	YELLOW	GREEN	BLUE	X
2	2	NONE	342702-1	342702-3	342702-5	342702-6	342702-7	342702-8	342702-9	3.96	9.86
3	3	NONE	342703-1	342703-3	342703-5	342703-6	342703-7	342703-8	342703-9	7.92	13.82
4	4	NONE	342704-1	342704-3	342704-5	342704-6	342704-7	342704-8	342704-9	11.88	17.80
5	5	NONE	342705-1	342705-3	342705-5	342705-6	342705-7	342705-8	342705-9	15.85	21.75
6	6	NONE	342706-1	342706-3	342706-5	342706-6	342706-7	342706-8	342706-9	19.81	25.71
7	7	NONE	342707-1	342707-3	342707-5	342707-6	342707-7	342707-8	342707-9	23.77	29.67
8	8	NONE	342708-1	342708-3	342708-5	342708-6	342708-7	342708-8	342708-9	27.74	33.64
9	9	NONE	342709-1	342709-3	342709-5	342709-6	342709-7	342709-8	342709-9	31.70	37.60
10	10	NONE	342710-1	342710-3	342710-5	342710-6	342710-7	342710-8	342710-9	35.66	41.56
11	11	NONE	342711-1	342711-3	342711-5	342711-6	342711-7	342711-8	342711-9	39.62	45.52
12	12	NONE	342712-1	342712-3	342712-5	342712-6	342712-7	342712-8	342712-9	43.59	49.49
5	3	2.4				342722-6				15.85	21.75
3	2	2				342721-5				7.92	13.82
5	3	2.4				342722-5				15.85	21.75
7	4	2.4				342723-5				23.77	29.67
9	5	2.4, 6.8				342724-5				31.70	37.60
11	6	2.4, 6.8, 10				342750-5				39.62	45.52
9	8	2							343266-9	31.70	37.60



- NOTES:-
- FOR LATEST ISSUE OF DRAWING CONSULT AMP ENGINEERING.
 - PERFORMANCE SPECIFICATION 108-3042
 - MATES WITH CONNECTOR ASSEMBLIES CONFORMING TO AMP SPEC 108-19045
 - AS MEASURED AT DATUM BASE
 - POST TO CONFORM TO SOLDERABILITY SPEC BS 2011 PART 2.17 1981 (IEC 68-2-20) SOLDER BATH DWELL TIME NOT TO EXCEED 3 SECS. AT A TEMP. OF 250° C MAX.
 - GREY VERSION WITH SILVER PLATED POSTS ONLY.
 - OBsolete PARTS: OBsolete CIS STREAMLINING PER D.RENAUD/D.SINISI
 - OBsolete

OTHER TREATMENT	FINISH	MATERIAL	PART NUMBER
CUSTOMER DWG FOR REFERENCE ONLY			RELEASED FOR PUBLICATION 27 SEPT. 1983
TOLERANCES UNLESS OTHERWISE STATED:-		INS. DIA. RANGE	SCALE
DEC ± 0.5			5:1
ANGLES ± 1°		TE Connectivity	
DR. D. TERRY		NAME MTC FULLY SHROUDED POST HEADER	
E3 REVISED PER ECO-11-016136	M88 08AUG11	CHK. [Signature]	APP. [Signature]
ISS REVISION RECORD	DR DATE	LOC DWG. NO. A1 E	SHEET C342702 of