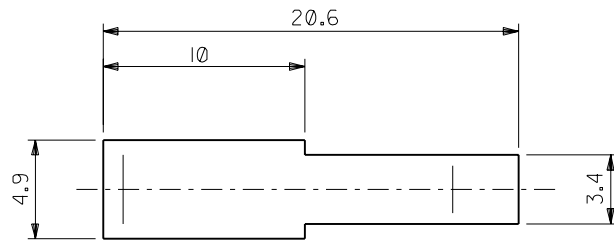
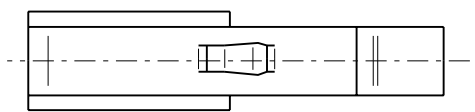
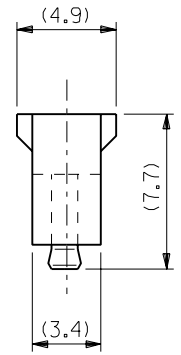
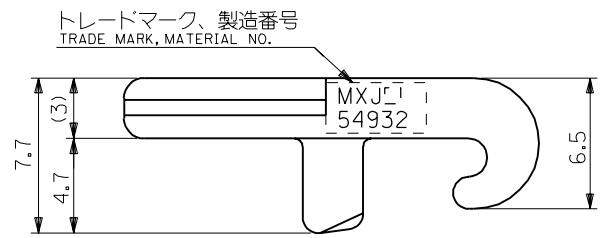


DWG. NO.
SD-54932-003



注記
NOTES:

- 材質: ガラス無し66ナイロン, UL94V-0, ナチュラル(白色)
MATERIAL: 66 NYLON, GLASS NON FILLED, UL94V-0, NATURAL(WHITE)



54932-0000
製品番号
MATERIAL NO.

DIMENSIONS:
 mm INCH mm ONLY
SHT REV
REVISION ON CAD ONLY

GENERAL TOLERANCES:
(UNLESS SPECIFIED)
一般公差

10 UNDER 未満	±0.2
10 OVER 以上 30 UNDER 未満	±0.25
30 OVER 以上	±0.3
ANGLE 角度	±3°

SCALE 4-1
DESIGN UNITS mm INCH
THIRD ANGLE PROJECTION

DRAWN BY & DATE
K Kobayashi '02/01/17
CHECKED BY & DATE
N. Matsueda '02/01/17
APPROVED BY & DATE
Y. Ito '02/01/17

CAD FILENAME
54932003.S01

TITLE:
MTC (MULTI TERMINAL CONN.)
REC. LEVER

MOLEX INCORPORATED

MATERIAL NO. SEE CHART
DRAWING NO. SD-54932-003
SHEET NO. 1 OF 1

THIS DRAWING CONTAINS INFORMATION THAT IS PROPRIETARY TO MOLEX INCORPORATED AND SHOULD NOT BE USED WITHOUT WRITTEN PERMISSION.

EC NO. DRWN: CHK: APPR:	EC NO. DRWN: CHK: APPR:	EC NO. DRWN: CHK: APPR:	EC NO. DRWN: CHK: APPR:	EC NO. J2002-0373 DRWN: K.KOBAYASHI '02/01/17 CHK: N.MATSUJIRA '02/01/17 APPR: Y.ITO '02/01/17	RELEASED	MATERIAL 材料 注記参照 SEE NOTES	FINISH 仕上げ —	WIRE RANGE 適用電線範囲 —	INS. RANGE 被覆外径 —

DO NOT SCALE DRAWING