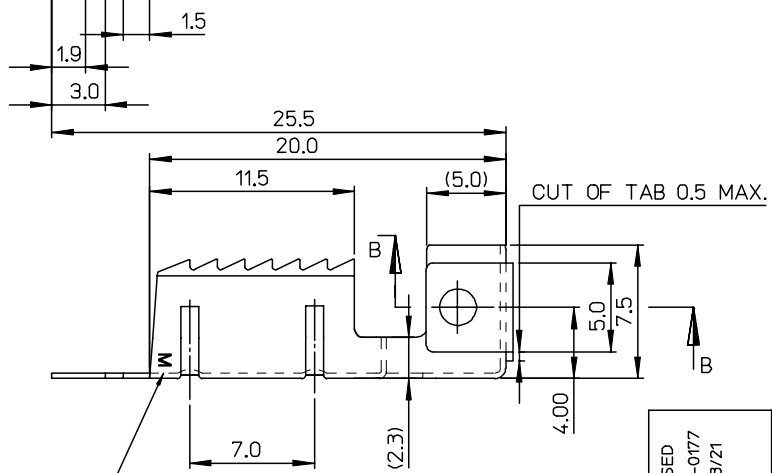
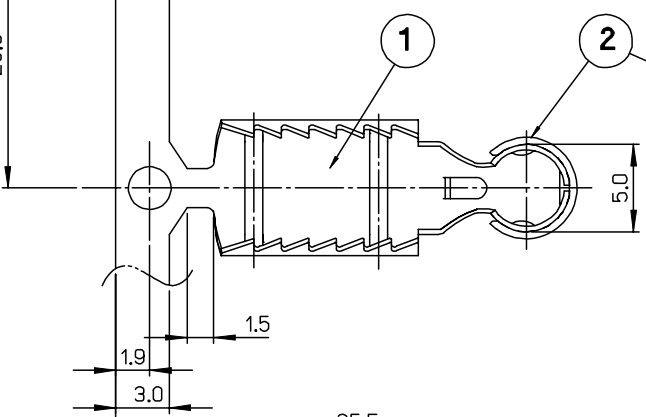
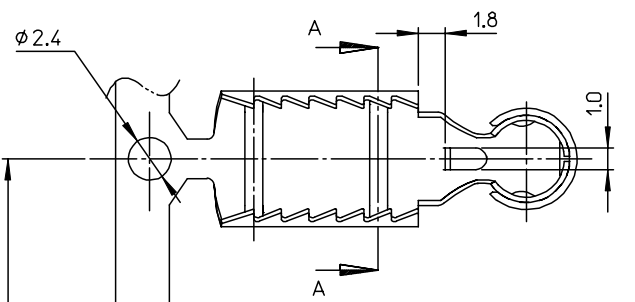


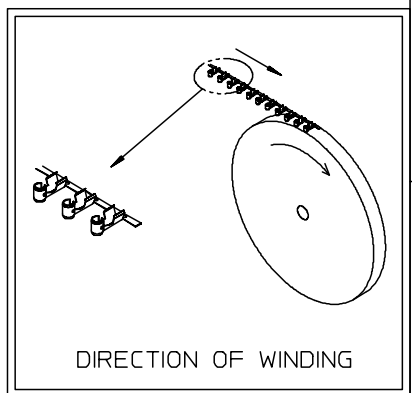
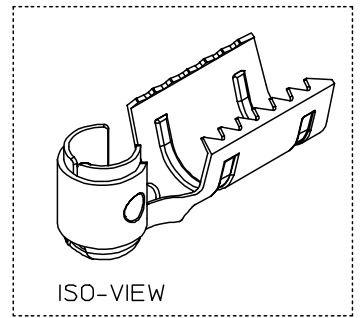
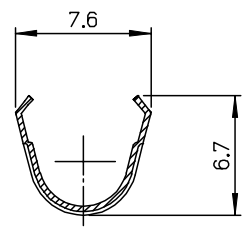
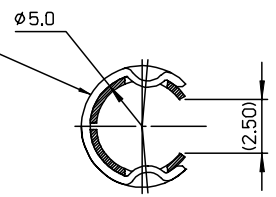
DWG. NO. SD-49766-001  
 SIMILAR ITEM  
 PROJECT NO.  
 DO NOT SCALE DRAWING  
 DIMENSION IN METRIC



NOTES  
 1. PART NO. AND MATERIAL

NO	NAME	MATERIAL NO.	PART NO.	MATERIAL	THICKNESS
1	BODY	///	///	STAINLESS-STEEL(SUS 304)	0.3
2	RING	///	///	STAINLESS-STEEL(SUS 301)	0.4

2. INITIAL INSERTION FORCE : 5.0 Kg.f MAX.  
 EXTRACTION FORCE : INITIAL : 2.0 - 4.5 Kg.f  
 6TH : 1.2 Kg.f Min.



TRADE MARK (MK1)

NEW RELEASED ECN NO. KOR2005-0177 DRWN: J.B.JIN 05/03/21 CHK: W.Y.YANG APPR: C.W.LEE	QUALITY SYMBOLS MAJOR CRITICAL	GENERAL TOLERANCES: (UNLESS SPECIFIED)		SCALE 4:1	DESIGN UNITS <input checked="" type="checkbox"/> mm <input type="checkbox"/> INCH	THIRD ANGLE PROJECTION <input type="checkbox"/> FIRST ANGLE <input checked="" type="checkbox"/> THIRD ANGLE	SHT REV		
		4 PLACES ±0. INCH	3 PLACES ±0. INCH	2 PLACES ±0.30 INCH	1 PLACE ±0.30 INCH	DRAWN BY & DATE J.B.JIN 04/12/08		TITLE: 5.0 DIA SPARK PLUG TERMINAL ( BODY ASS'Y)	
		ANGULAR: ± °				CHECKED BY & DATE W.Y.YANG 04/12/08			MOLEX INCORPORATED
		DRAFT WHERE APPLICABLE MUST REMAIN WITHIN DIMENSIONS				APPROVED BY & DATE C.W.LEE 04/12/08		CAD FILENAME S497665001AA.MI	

THIS DRAWING CONTAINS INFORMATION THAT IS PROPRIETARY TO MOLEX INCORPORATED AND SHOULD NOT BE USED WITHOUT WRITTEN PERMISSION.

SIZE B