

## ACT20P

### ACT20P-UI-AO-DO-LP-S

**Weidmüller Interface GmbH & Co. KG**  
 Klingenbergstraße 16  
 D-32758 Detmold  
 Germany  
 Fon: +49 5231 14-0  
 Fax: +49 5231 14-292083  
 www.weidmueller.com



#### ACT20P: The flexible solution

- Precise and highly functional signal converters
- Simple configuration via display (Pro DCDC II), FDT/DTM software or DIP switch
- Release levers simplify handling
- More space in the control cabinet, from 12.5 mm wide for two channels

#### General ordering data

Type	ACT20P-UI-AO-DO-LP-S
Order No.	<a href="#">1453210000</a>
Version	ACT20P, Signal converter/insulator, Limit value monitoring, Input: temperature, R, U, I, Output: 4...20 mA, Output current loop powered
GTIN (EAN)	4050118259605
Qty.	1 pc(s).

**ACT20P**  
**ACT20P-UI-AO-DO-LP-S**

**Weidmüller Interface GmbH & Co. KG**  
 Klingenbergstraße 16  
 D-32758 Detmold  
 Germany  
 Fon: +49 5231 14-0  
 Fax: +49 5231 14-292083  
 www.weidmueller.com

**Technical data**
**Dimensions and weights**

Width	12.5 mm	Width (inches)	0.492 inch
Height	119.2 mm	Height (inches)	4.693 inch
Depth	113.6 mm	Depth (inches)	4.472 inch
Net weight	80 g		

**Temperatures**

Humidity	10...90 % (no condensation)	Operating temperature, max.	70 °C
Operating temperature, min.	-20 °C	Storage temperature, max.	70 °C
Storage temperature, min.	-20 °C	Operating temperature	-20 °C...70 °C
Ambient temperature	-20 °C...+70 °C	Storage temperature	-20 °C...70 °C

**Input**

Number of inputs	1	Type	Universal signal isolator / signal amplifier, thermocouple, RTD
Sensor	PT100 / 2-/3-/4-wire, PT1000/2-/3-/4-wire, PT200, N120, Thermocouples: B, E, J, K, L, N, R, S, T, U, Potentiometer	Sensor supply	0.1 mA / 0.05 mA (depending on measuring range) @ RTD cable
Influence of the sensor cable resistance	5 Ω @ RTD- Kabel	Input voltage	configurable, ± 300 V DC (min. measurement range 100 V), 0...300 V AC (min. measurement range 100 V)
Input resistance, voltage	2 MΩ, > 10 MΩ	Input current	configurable, ± 5 A DC (min. measurement range 0.5 A)
Input resistance, current	40 Ω	Input measurement range	PT100 -200...+850 °C, Thermocouple type J -100...+1200°C, Thermocouple type K -200...+1370°C, customization
Cable-length compensation	< ±0.002 Ω per cable resistance Ω	Resistance	0...12 kΩ, 0...1k5 Ω, 0...750 Ω
Potentiometer	1.2...500 kΩ		

**Output**

Type	Output-loop powered	Number of outputs	1
Output signal limit	Harmonics: <10 mV (peak to peak)	Output current	4...20 mA, 20...4 mA, Current loop
cold junction compensation	±1°C (-20°C...60°C)	load impedance current	typ. 700 Ω @ 24 V DC
Supply voltage	via output current loop		

**ACT20P  
ACT20P-UI-AO-DO-LP-S**

**Weidmüller Interface GmbH & Co. KG**  
 Klingenbergstraße 16  
 D-32758 Detmold  
 Germany  
 Fon: +49 5231 14-0  
 Fax: +49 5231 14-292083  
 www.weidmueller.com

**Technical data**
**General data**

Accuracy	< 0.1 % of measuring range	Cold-junction compensation error	±1.0°C @ -20° C - 65°C
Configuration	With FDT/DTM software	Galvanic isolation	2-way isolator, between input/output
Mounting rail	TS 35	Step response time	450 ms
Supply voltage	Output loop powered, (10...45 V)	Temperature coefficient	< 0.02 °C of measuring range / °C

**Insulation coordination**

Galvanic isolation	2-way isolator, between input/output	Impulse withstand voltage	4 kV (1.2/50 µs)
Insulation voltage	3.51 kV between input and output	Pollution severity	2
Rated voltage	300 V <sub>eff</sub>	Surge voltage category	III

**Output (digital)**

Type	Transistor, open collector	Rated switching current	20 mA
Rated switching voltage	≤ 30 V DC		

**Connection data**

Type of connection	Screw connection	Tightening torque, min.	0.4 Nm
Tightening torque, max.	0.6 Nm	Clamping range, rated connection	2.5 mm <sup>2</sup>
Clamping range, min.	0.5 mm <sup>2</sup>	Clamping range, max.	2.5 mm <sup>2</sup>
Wire connection cross section AWG, min.	AWG 30	Wire connection cross section AWG, max.	AWG 14

**Classifications**

ETIM 5.0	EC002653	ETIM 6.0	EC002653
eClass 6.2	27-21-01-20	eClass 7.1	27-21-01-20
eClass 8.1	27-21-01-20	eClass 9.0	27-21-01-20
eClass 9.1	27-21-01-90		

**Product information**

Descriptive text ordering data	CBX200 USB configuration adapter - 8978580000
--------------------------------	---

**Approvals**

Approvals



Approvals	CULUS;
ROHS	Conform

**Data sheet****ACT20P  
ACT20P-UI-AO-DO-LP-S**

**Weidmüller Interface GmbH & Co. KG**  
Klingenbergstraße 16  
D-32758 Detmold  
Germany  
Fon: +49 5231 14-0  
Fax: +49 5231 14-292083  
www.weidmueller.com

**Technical data****Downloads**

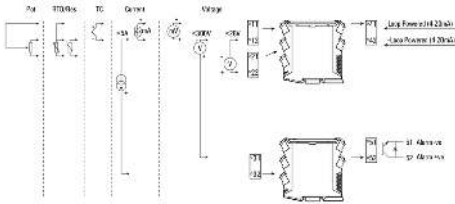
Approval/Certificate/Document of Conformity	<a href="#">Declaration of Conformity</a>
Brochure/Catalogue	<a href="#">CAT 4.1 ELECTR 16/17 EN</a>
Engineering Data	<a href="#">EPLAN, WSCAD, Zuken E3.S</a>
Engineering Data	<a href="#">STEP</a>
Software	<a href="#">WI-Manager, DTM-Library for online installation</a>
User Documentation	<a href="#">Instruction sheet</a>

**ACT20P  
ACT20P-UI-AO-DO-LP-S**

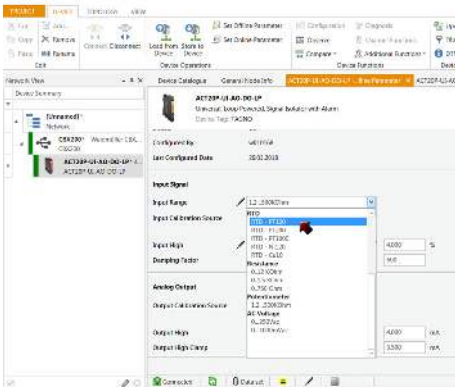
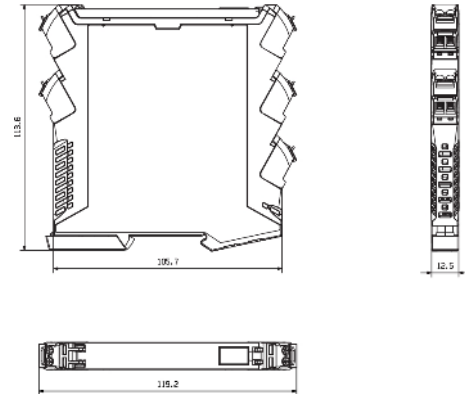
**Weidmüller Interface GmbH & Co. KG**  
 Klingenbergstraße 16  
 D-32758 Detmold  
 Germany  
 Fon: +49 5231 14-0  
 Fax: +49 5231 14-292083  
 www.weidmueller.com

**Drawings**

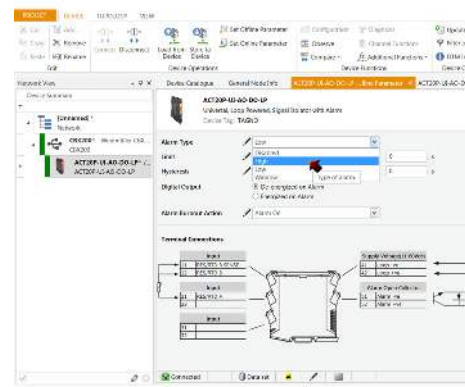
**Connection diagram**



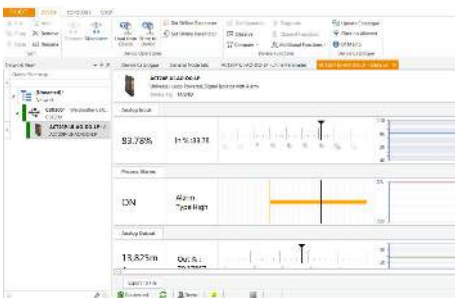
**Dimensioned drawing**



screenshot of configuration with FDT2 / DTM software



screenshot of configuration with FDT2 / DTM software



screenshot of "observe" with FDT2 / DTM software"

screenshot, configuration of alarm output (limit value) as example