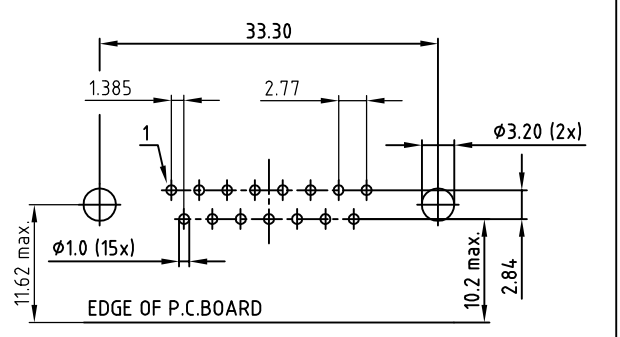
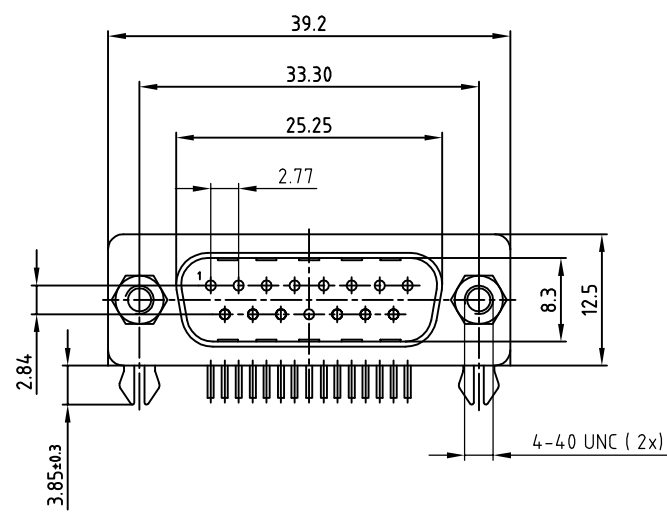
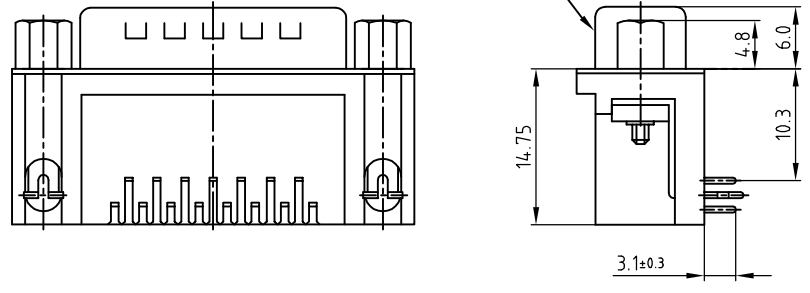


used for: D-SUB

SEE NOTE 4



RECOMMENDED P.C.B. LAYOUT (TOP VIEW)  
TOLERANCES: ±0.05mm

Directive 2002/95/EC RoHS compliant

**SPECIFICATION**

1. MATERIAL:
  - INSULATOR: THERMAL PLASTIC UL 94 V-0
  - CONTACTS: COPPER ALLOY
  - SHELL: STEEL
  - RIVET, BOARDLOCK: COPPER ALLOY
2. CONTACT PLATING:
  - UNDERPLATE: 40µin NICKEL
  - CONTACT AREA: GOLD PLATED
  - SOLDER TAILS AREA: GOLD PLATED
3. ELECTRICAL:
  - OPERATION VOLTAGE: 250 V AC max.
  - CURRENT RATING: 3 A max.
  - CONTACT RESISTANCE: 15 mOhm max.
  - INSULATION RESISTANCE: 3000 MOhm min @ 500 V DC
  - DIELECTRIC WITHSTANDING VOLTAGE: 1000 V AC / minute
  - OPERATING TEMPERATURE: -55°C TO +105°C
4. CONNECTOR IS PART MARKED: DLS2XP6AK44X CONEC ABC

THIS DRAWING MAY NOT BE COPIED OR REPRODUCED IN ANY WAY, AND MAY NOT BE PASSED ON TO A THIRD PARTY WITHOUT WRITTEN PERMISSION. OWNERSHIP AND COPYRIGHT OF CONEC GmbH DO NOT ALTER CAD DRAWING BY HAND

tolerance		dim. in mm	
0.	±0.5		
.0	±0.3		
.00	±0.2		
2011	date	name	
drawn	06.05.	Lehmenkühler	
appd.	06.05.	Fischer	
norm			
d-old			
a	Original		
rev.	description	date	name



scale:	2:1
material:	SEE SPECIFICATION
title:	D-SUB R/A 9.4mm MALE 90° 15pos. with snap-in + clinch nut + screw lock
dwg no:	16K1A2823
part no:	DLS2XP6AK44X
	DIN-A 4 sh: 1/1

4

3

2

1

F

F

E

E

D

D

C

C

B

B

A

A