

REV.	DESCRIPTION	DATE	APPROVED
C	21154	REBRAN, ADDED 2.35 & .18/.31 DIM'S	1-16-91
H	24064	ADDED ITEMS 12 AND 13	6/29/93

CONSTRUCTION

MAIN CONTACTS
CONFIGURATION
VOLTAGE (NOMINAL)
CURRENT: RES.
CARRY ONLY

RUPTURE

AUX. CONTACTS
CONFIGURATION
VOLTAGE
CURRENT: RES.
IND.

COIL DATA
DUTY CYCLE

COIL VOLTAGE MAX.
PICKUP VOLTAGE HOT
DROPOUT VOLTAGE
COIL RES.

ENVIRONMENTAL DATA
AMBIENT TEMP

LIFE ELECTRICAL
LIFE MECHANICAL
WEIGHT

HERMETIC SEAL

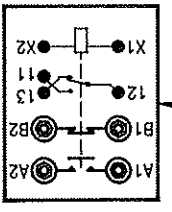
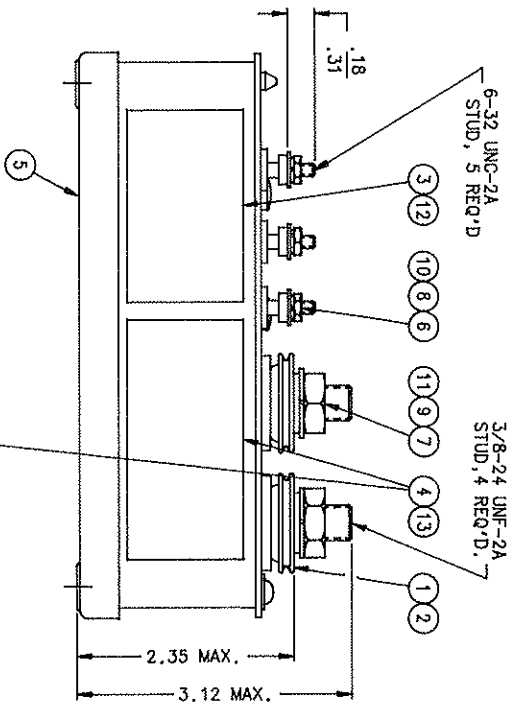
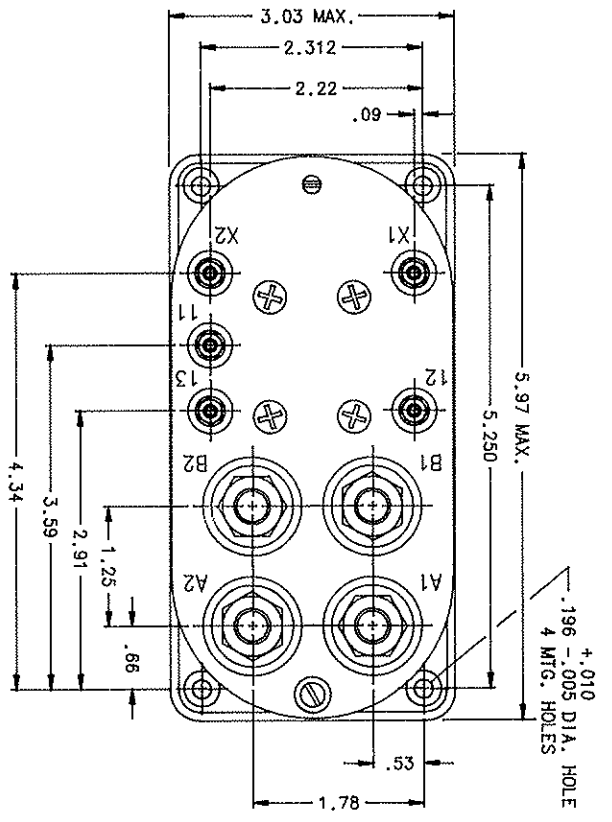
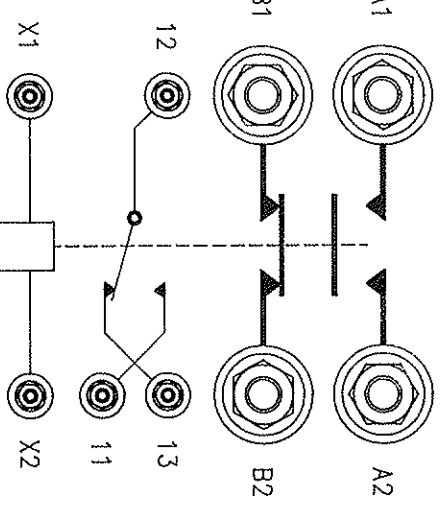
SPDT SIDESTABLE
30 VDC
300 AMP
1500 AMP INRUSH
1000 AMP FOR 30 SEC.
3000 AMP

SPDT
28 VDC
5 AMP
5 AMP

INTERMITTANT
3 MINUTES MAX.
30 VDC
20 VDC MAX.

0.5 - 5.5
8.8 OHM ± 20% AT 25°C

50,000 CYCLES MIN.
100,000 CYCLES MIN.
2 LBS. 14 OZ.



- NOTES:
- THIS UNIT DESIGNED TO THE BASIC REQUIREMENTS OF MIL-R-6106E EXCEPT AS NOTED.
 - QUALIFICATION TESTING NOT COMPLETED.

FIG NO	QTY	RECD	PART OR IDENTIFYING NO	NOMENCLATURE OR DESCRIPTION	FORM NO	DRAWING OR SPECIFICATION	MATERIAL OR NOTE
13	1		39529-017	OVERLAY			
12	1		39529-001	OVERLAY			
11	4		51807-084	WASHER - LOCK NO. 3/8			BRONZE
10	5		51806-014	WASHER - LOCK NO. 6 SPLIT			BRONZE
9	4		51704-024	WASHER, 5/8 X 25/64 X .062			BRASS
8	5		51702-204	WASHER, 3/8 X 9/64 X .031			BRASS
7	4		50407-164	NUT - 3/8-24 X 5/8 X 7/32 HEX			BRASS
6	5		50406-034	NUT, 6-32 X 1/4 X 5/64 HEX			BRASS
5	1		39010-020	CONTACTOR ASSEMBLY - PRIMARY			
4	1		32803-001	PLATE - HEADER DIAGRAM			
3	1		16043-074	PLATE NAME			
2	4		13121-001	TERMINAL INSULATING CUP			
1	4		13120-001	LOG SEAT			

BC-2639		REF.		HARTMAN ELECTRICAL MANUFACTURING MANSFIELD, OHIO	
UNLESS OTHERWISE SPECIFIED DIMENSIONS ARE IN INCHES TOLERANCES ARE		BELL 212-075-199		CONTACTOR - HERMETICALLY SEALED, S.P.D.T., 300 AMP	
2 PL DEC. 3 PR. DEC. ANGLE ES.	4 .06	.010	4 1*	SIZE	CODE IDENT
CUSTOMER CONTROLLED DRAWING	BELL	DR BY	LOB	11/5/93	74063
		CHK BY	W	11/5/93	SCALE
		ENGR	D	11/5/93	NONE
		MFG	D	11/5/93	
		RELEASE			
		CONTR. NO.			
		GOVT APPV			