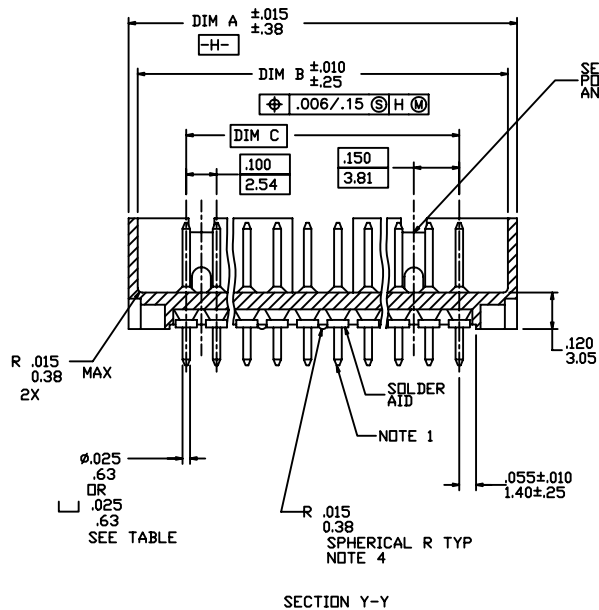
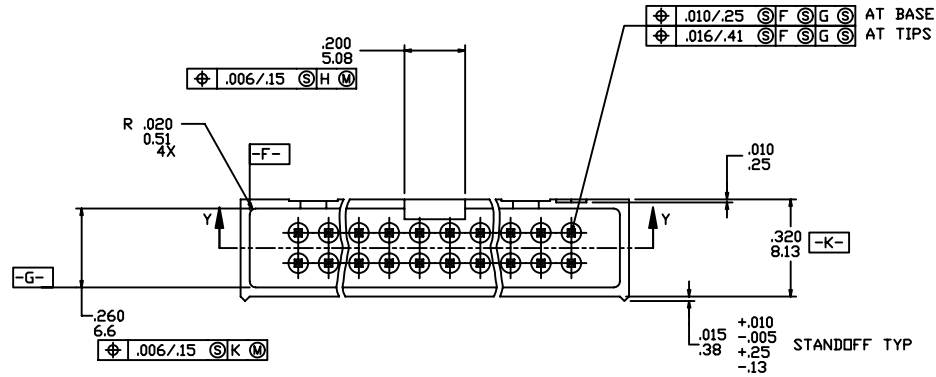


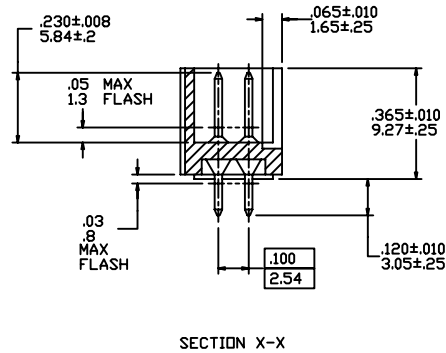
Tous droits strictement réservés. Reproduction ou communication à des tiers interdite sous quelque forme que ce soit sans autorisation écrite du propriétaire. Propriété de c FCI. Droits de reproduction FCI.



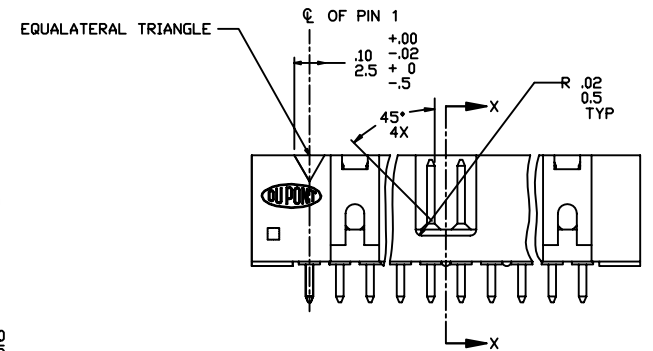
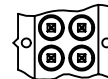
All rights strictly reserved. Reproduction or issue to third parties in any form whatever is not permitted without written authority from the proprietor. Property of FCI. Copyright FCI.



SEE SHEET 2 AND TABLES FOR POL FEATURE ARRANGEMENT AND STYLE.



SECTION X-X

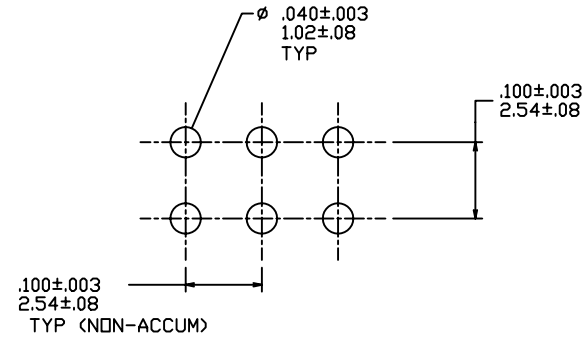
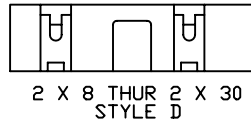
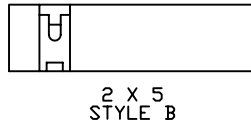
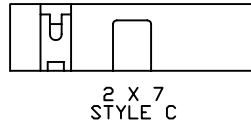
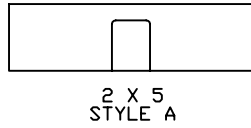


mat'l. code		tolerances unless otherwise specified		CUSTOMER COPY	FCI www.fciconnect.com	
itr	ecn no	dr	date	.X ± 0.3		
C	N05-0151	ZC	6/10/05	.XX ± 0.13	title DUFLD 4 WALL SLIMLINE HEADER	
D	N07-0151	WG	8/01/07	.XXX ± 0.05		
				projection	product family QUICKIE	
				linear		code
				angles	size	
				dr	J.W. BAIR	8/1/90
				enrg	M.SMYK	8/1/90
				chr	M.SMYK	8/1/90
				appd	M.SMYK	8/1/90
				INCH/MM	scale	1:1
				sheet index	revision sheet	dwg no 78280
						sheet 1 of 3

Tous droits strictement réservés. Reproduction ou communication à des tiers interdite sous quelque forme que ce soit sans autorisation écrite du propriétaire. Propriété de c FCI. Droits de reproduction FCI.



All rights strictly reserved. Reproduction or issue to third parties in any form whatever is not permitted without written authority from the proprietor. Property of FCI. Copyright FCI.



RECOMMENDED HOLE PATTERN
SCALE 10/1

NOTES

- ① SAME PIN POSITION TOLERANCE APPLIES TO BOTH ENDS OF EACH TERMINAL.
- ② MOLDING MAT'L: 30% GLASS-FILLED POLYESTER, FLAME RETARDANT PER UL 94 VE-0, COLOR-BLUE.
3. 1° MAX DRAFT PERMISSIBLE ON ALL SURFACES.
4. 4 LBS/1.8 KG. MIN. TERMINAL PULL-OUT FORCE.
5. TERMINAL MATERIAL: PHOSPHORUS BRONZE.
6. SOLDER AID COMPOSITION 60/40 WITH RMA FLUX.
7. CONNECTORS WITH BOARD RETENTION HAVE A 15 LBS/6.8 KG MAX. INSERTION FORCE AND .5 LB/2.26 KG MIN. RETENTION FORCE USING .062/1.57 THICK CIRCUIT BOARD AND RECOMMENDED HOLE PATTERN.
8. THE HOUSING OF XXXX-XYLIF WILL WITHSTAND EXPOSURE TO 260°C PEAK TEMPERATURE FOR 10 SECONDS IN A WAVE SOLDER PROCESS.
9. 78280-***LF IS JUST A LEAD FREE PRODUCT.
10. PLATING OPTION: MAYBE EITHER GOLD OR GXT PLATING AT MANUFACTURER'S OPTION.

KEY FOR PLATING AND TAIL TYPE					
X	TERMINAL PLATING NOTE 10	OPTIONS	SOLDER AID	RETENTION NOTE 7	
-0XX(LF)	30µ/.76 µAu OVER 50µ/1.27 µ Ni	NONE	YES	YES	
-1XX(LF)	30µ/.76 µGXT	NONE	YES	YES	
-2XX(LF)	30µ/.76 µAu OVER 50µ/1.27 µ Ni	END LATCH	YES	YES	
-3XX(LF)	30µ/.76 µGXT	END LATCH	YES	YES	
-4XX(LF)	30µ/.76 µAu OVER 50µ/1.27 µ Ni	NONE	NO	NO	
-5XX(LF)	30µ/.76 µGXT	NONE	NO	NO	
-6XX(LF)	30µ/.76 µAu OVER 50µ/1.27 µ Ni	NONE	NO	YES	
-7XX(LF)	30µ/.76 µGXT	NONE	YES	NO	
-8XX(LF)	30µ/.76 µAu OVER 50µ/1.27 µ Ni	NONE	YES	NO	

mat'l. code		tolerances unless otherwise specified		CUSTOMER COPY		 www.fciconnect.com					
ltr	ecn no	dr	date	linear	.X ± 0.3	projection	title				
D								.XX ± 0.13	 DUFLD 4 WALL SLIMLINE HEADER		
				.XXX ± 0.05		 INCH/MM	product family QUICKIE				
				angles	±			← →	code		
				dr	J.W. BAIR 8/1/90	scale	A3	78280			
				enrg	M.SMYK 8/1/90				1:1	sheet	
				chr	M.SMYK 8/1/90						2 of 3
				appd	M.SMYK 8/1/90						
sheet	revision										
index	sheet										

Tous droits strictement reserves. Reproduction ou communication a des tiers interdite sous quelque forme que ce soit sans autorisation ecrite du proprietaire. Propriete de c FCI. Droits de reproduction FCI.



All rights strictly reserved. Reproduction or issue to third parties in any form whatever is not permitted without written authority from the proprietor. Property of FCI. Copyright FCI.

SIZE	DIM A	DIM B	DIM C	STYLE
78280-X10(LF)	2X5	.78/19.81	.72/18.29	A
-X14(LF)	2X7	.98/24.89	.92/23.37	C
-X16(LF)	2X8	1.08/27.43	1.02/25.91	D
-X20(LF)	2X10	1.28/32.51	1.22/30.99	
-X24(LF)	2X12	1.48/37.59	1.42/36.07	
-X26(LF)	2X13	1.58/40.13	1.52/38.61	
-X30(LF)	2X15	1.78/45.21	1.72/43.69	
-X34(LF)	2X17	1.98/50.29	1.92/48.77	
-X40(LF)	2X20	2.28/57.91	2.22/56.39	
-X44(LF)	2X22	2.48/63.00	2.42/61.47	
-X50(LF)	2X25	2.78/70.61	2.72/69.09	
-X60(LF)	2X30	3.28/83.31	3.22/81.79	
-X64(LF)	2X32	3.48/88.39	3.42/86.87	D
78280-X02(LF)	2X5	.78/19.81	.72/18.29	B

mat'l. code		tolerances unless otherwise specified		CUSTOMER COPY		FCI www.fciconnect.com	
ltr	ecn no	dr	date	linear	.X ± 0.3	projection	title
D					.XX ± 0.13	⊕	DUFLD 4 WALL
				angles	.XXX ± 0.05		SLIMLINE HEADER
				dr	±	INCH/MM	product family QUICKIE
				enrg	J.W. BAIR 8/1/90	← →	code
				chr	M.SMYK 8/1/90	scale 1:1	size
				appd	M.SMYK 8/1/90	A3	78280
sheet	revision						sheet
Index	sheet						3 of 3