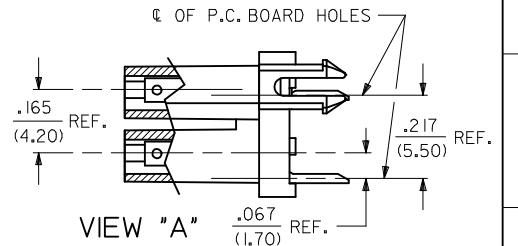
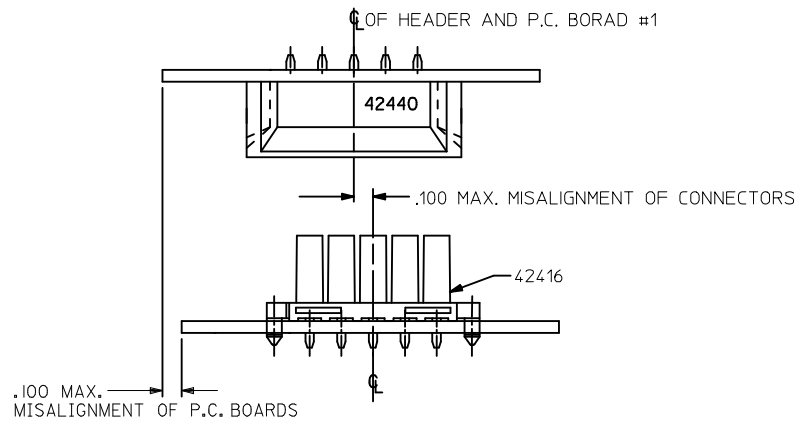


- NOTES:
- HOUSING MATERIAL:
 A = NYLON 6/6, UNFILLED U.L. 94V-2, COLOR: NATURAL.
 B = NYLON 6/6, UNFILLED U.L. 94V-0, COLOR: NATURAL.
 TERMINAL MATERIAL: BRASS.
 - TERMINAL PLATING:
 A - .000100/(0.00254) MIN. MATTE TIN OVER .000050/(0.00127) MIN. NICKEL OVERALL.
 B - .000030/(0.00076) MIN. SELECT GOLD AND .000100/(0.00254) MIN. SELECT MATTE TIN OVER .000050/(0.00127) MIN. NICKEL OVERALL.
 C - .000050/(0.00127) MIN. SELECT GOLD AND .000100/(0.00254) MIN. SELECT MATTE TIN OVER .000050/(0.00127) MIN. NICKEL OVERALL.
 - PRODUCT SPECIFICATION: PS-5556-002
 - PACKAGING SPECIFICATION: PK-42385-999.
 - PART MATES WITH MINI-FIT JR. PLUG 42475 AND HEADERS 42404, 42440, 43810, 43879, AND 44068.
 - DIMENSION TO BE USED FOR ALIGNMENT OF CIRCUIT #1 OF MATING CONNECTOR.
 - PHANTOM LINES INDICATE AREAS WHERE TERMINAL STANDOFFS CONTACT P.C. BOARD. NO EXPOSED TRACES OR VIAS ALLOWED NEAR THESE AREAS.
 - A MAXIMUM TOLERANCE OF .050/(1.27) ALLOWS FOR 2 POINTS OF ELECTRICAL CONTACT. A MAXIMUM TOLERANCE OF .020/(.51) ALLOWS FOR 4 POINTS OF CONTACT.
 - .016 IN/IN OR .016 MM/MM MAX. BOW ALLOWABLE AT DATUM -C-
 - IT IS RECOMMENDED TO USE THE 42475 SERIES MATING PART NUMBER WITHOUT TERMINALS TO AID IN PCB INSERTION. INSERT THE 42416 PART INTO THE 42475 PART AND THEN INSERT INTO THE PCB.
 - THIS CONNECTOR NOT DESIGNED FOR CURRENT SHARING.
 - CONNECTOR ASSEMBLIES ARE NOT TO BE MATED OR UNMATED WHILE CIRCUITS ARE LIVE.
 - WHEN THIS PRODUCT IS USED IN A BLIND MATING APPLICATION, THE SYSTEM LEVEL DESIGN MUST INCORPORATE GUIDANCE SO THE CONNECTORS ARE WITHIN THE CAPTURE ENVELOPE (UP TO (.100/2.54) MISALIGNMENT) OF THE FLANGES ON THE HEADER OR PLUG HOUSING AND CAN THUS ALIGN THEMSELVES AS THEY COME TOGETHER. FLOAT IS ALSO REQUIRED IN THE OVERALL DESIGN TO ALLOW THE PCB RECEPTACLE OR ITS MATE TO MOVE INTO A STRESS-FREE POSITION AFTER MATING. IN BOARD TO BOARD APPLICATIONS ONLY ONE HEADER IS ALLOWED PER PC BOARD.
 - PARTS CONFORM TO CLASS 'B' REQUIREMENTS OF COSMETIC SPECIFICATION PS-45499-002.

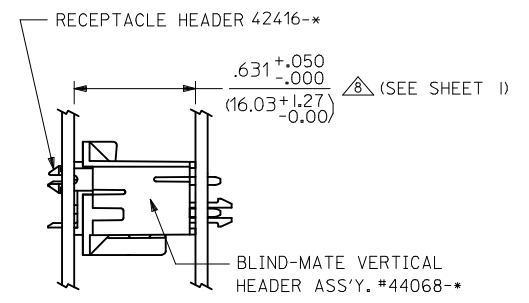
CIRCUIT SIZE	DIM. "A"	DIM. "B"	DIM. "C"
2	—	.21 (5.4)	.370 (9.40)
4	.165 (4.20)	.38 (9.6)	.535 (13.60)
6	.331 (8.40)	.54 (13.8)	.701 (17.80)
8	.496 (12.60)	.71 (18.0)	.866 (22.00)
10	.661 (16.80)	.87 (22.2)	1.031 (26.20)
12	.827 (21.00)	1.04 (26.4)	1.197 (30.40)
14	.992 (25.20)	1.20 (30.6)	1.362 (34.60)
16	1.157 (29.40)	1.37 (34.8)	1.528 (38.80)
18	1.323 (33.60)	1.54 (39.0)	1.693 (43.00)
20	1.488 (37.80)	1.70 (43.2)	1.858 (47.20)
22	1.654 (42.00)	1.87 (47.4)	2.024 (51.40)
24	1.819 (46.20)	2.03 (51.6)	2.189 (55.60)



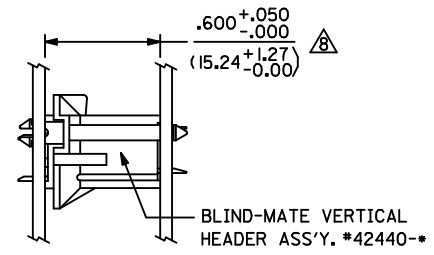
ADD 0007 EC NO: UCP2017-1756 DRWN: JUILLES CHKD: JELL APPR: FSMITH P8	DESCRIPTION 2017/02/09 2017/02/09 2017/02/15	QUALITY SYMBOLS	GENERAL TOLERANCES (UNLESS SPECIFIED)	DIMENSION STYLE	SCALE	DESIGN UNITS	THIRD ANGLE PROJECTION
		$\nabla = \emptyset$ $\nabla = \emptyset$ $\nabla = \emptyset$	mm INCH 4 PLACES ± --- ± --- 3 PLACES ± --- ± .010 2 PLACES ± 0.25 ± .015 1 PLACE ± 0.38 ± --- 0 PLACE ± ±	IN/MM DRAWN BY DATE RJP 01-25-89 CHECKED BY DATE BAP 01-25-89 APPROVED BY DATE RAS 01-25-89	4:1	METRIC	SELECTIVELY LOADED RECEPTACLE HEADER ASSY (MINI-FIT JR. SERIES)
		ANGULAR ±1/2° DRAFT WHERE APPLICABLE MUST REMAIN WITHIN DIMENSIONS	MATERIAL NO. SEE CHART	DOCUMENT NO. SDA-42416-*	SHEET NO. 1 OF 3		
		THIS DRAWING CONTAINS INFORMATION THAT IS PROPRIETARY TO MOLEX. INCORPORATED AND SHOULD NOT BE USED WITHOUT WRITTEN PERMISSION					



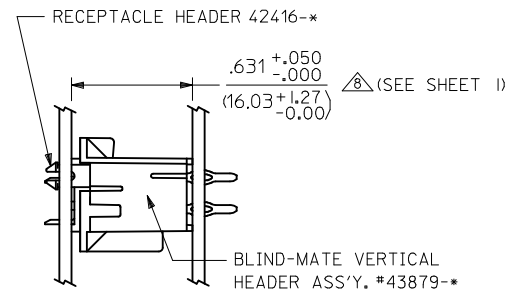
ALIGNMENT TOLERANCE FOR .100 MAX. BOARD-TO-BOARD MISALIGNMENT
(NO CONNECTOR FLOAT)



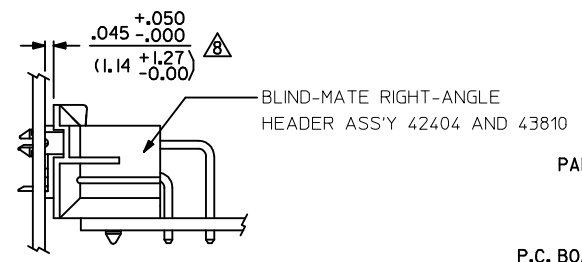
P.C.BOARD-TO-P.C.BOARD APPLICATION #5



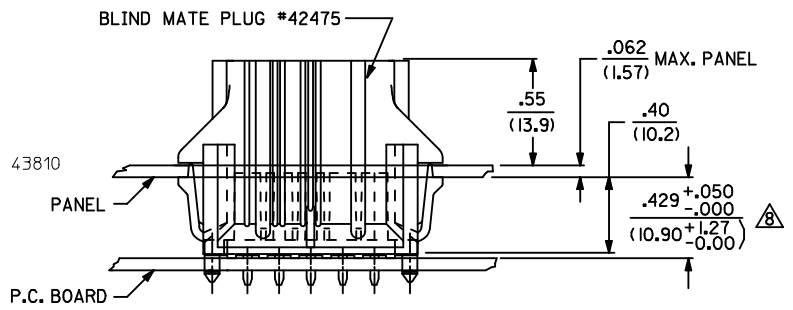
PANEL-TO-P.C.BOARD APPLICATION #1



P.C.BOARD-TO-P.C.BOARD APPLICATION #4



PANEL-TO-P.C.BOARD APPLICATION #2



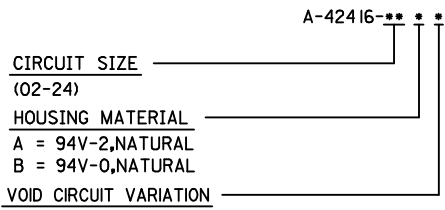
PANEL-TO-P.C. BOARD APPLICATION #3

SEE SHEET 1 IEC NO: UCP2017-1756 DRWN: JUILLES CHKD: JELL APPR: FSMITH P8	QUALITY SYMBOLS ∇=0 ∇=0 ∇=0	GENERAL TOLERANCES (UNLESS SPECIFIED)		DIMENSION STYLE IN/MM	SCALE 4:1	DESIGN UNITS METRIC	THIRD ANGLE PROJECTION	
		mm	INCH	DRAWN BY	DATE	SELECTIVELY LOADED RECEPTACLE HEADER ASSY (MINI-FIT JR. SERIES) molex SDA-42416-* SHEET NO. 2 OF 3		
		4 PLACES ± .010	± .010	RJF	01-25-89			
		3 PLACES ± .010	± .010	CHECKED BY	DATE			
2 PLACES ± .025	± .015	BAP	01-25-89					
1 PLACE ± 0.38	± .010	APPROVED BY	DATE	MATERIAL NO. SEE CHART DOCUMENT NO. SDA-42416-*				
0 PLACE ±	±	RAS	01-25-89					
ANGULAR ±1/2°		DRAFT WHERE APPLICABLE MUST REMAIN WITHIN DIMENSIONS			THIS DRAWING CONTAINS INFORMATION THAT IS PROPRIETARY TO MOLEX INCORPORATED AND SHOULD NOT BE USED WITHOUT WRITTEN PERMISSION			

PART NO.	ENG. NO.	CKT. SIZE	HSG. MAT'L.	TERMINAL PLATING REQUIRED AT EACH CIRCUIT LOCATION: V = VOIDED CIRCUIT																							
				1	2	3	4	5	6	7	8	9	10	11	12	13	14	15	16	17	18	19	20	21	22	23	24
15-24-8141	A-42416-14BA	14	94V-0	V	A	V	A	V	A	V	A	V	V	A	V	V	A	-	-	-	-	-	-	-	-	-	
15-24-8145	A-42416-14BB	14	94V-0	A	V	V	A	V	A	V	V	A	V	A	V	V	A	-	-	-	-	-	-	-	-	-	
15-24-8151	A-42416-14BC	14	94V-0	A	V	V	A	V	A	A	V	A	V	A	V	A	A	-	-	-	-	-	-	-	-	-	
15-24-8152	A-42416-14BD	14	94V-0	A	A	V	A	V	A	A	A	A	V	A	V	A	A	-	-	-	-	-	-	-	-	-	
42416-0001	-----	06	94V-2	A	V	A	V	A	V	-	-	-	-	-	-	-	-	-	-	-	-	-	-	-	-	-	
42416-0002	-----	10	94V-2	V	A	V	A	V	A	V	A	A	A	-	-	-	-	-	-	-	-	-	-	-	-	-	
42416-0003	-----	06	94V-0	A	V	A	A	V	A	-	-	-	-	-	-	-	-	-	-	-	-	-	-	-	-	-	
42416-0004	-----	24	94V-2	V	V	A	A	A	A	A	A	A	A	A	A	A	A	A	A	A	A	A	A	A	A	A	
42416-0005	-----	14	94V-0	A	V	A	V	A	V	A	A	V	A	V	A	V	A	-	-	-	-	-	-	-	-	-	
42416-0006	-----	18	94V-0	A	V	V	A	V	V	A	A	A	A	V	V	A	V	V	A	A	A	-	-	-	-	-	
42416-0007	-----	4	94V-0	C	C	C	V	-	-	-	-	-	-	-	-	-	-	-	-	-	-	-	-	-	-	-	

SEE NOTE 2 FOR PLATING
A = MATTE TIN
B = 30μ IN GOLD
C = 50μ IN GOLD

LEGEND:



SEE SHEET 1 EC NO: UCP2017-1756 DRWN: JUILLES 2017/02/09 CHKD: JELL 2017/02/09 APPR: FSMITH 2017/02/15 P8	QUALITY SYMBOLS ▽=0 ▽=0 ▽=0	GENERAL TOLERANCES (UNLESS SPECIFIED) mm INCH 4 PLACES ±.--- ±.--- 3 PLACES ±.--- ±.010 2 PLACES ±0.25 ±.015 1 PLACE ±0.38 ±.--- 0 PLACE ± ±	DIMENSION STYLE IN/MM DRAWN BY DATE RJF 01-25-89 CHECKED BY DATE BAP 01-25-89 APPROVED BY DATE RAS 01-25-89	SCALE 1:1 DESIGN UNITS METRIC THIRD ANGLE PROJECTION	TITLE SELECTIVELY LOADED RECEPTACLE HEADER ASSY (MINI-FIT JR. SERIES) molex
	ANGULAR ±1/2° DRAFT WHERE APPLICABLE MUST REMAIN WITHIN DIMENSIONS	MATERIAL NO. SEE CHART	DOCUMENT NO. SDA-42416-*	SHEET NO. 3 OF 3	
	THIS DRAWING CONTAINS INFORMATION THAT IS PROPRIETARY TO MOLEX INCORPORATED AND SHOULD NOT BE USED WITHOUT WRITTEN PERMISSION				
	SIZE C				